



# Amdahl Angus & Hereford

*Fall Bull & Female Production Sale  
Plus Complete Hereford Herd Dispersion*

**NEW  
DATE**

**THURS., DECEMBER 7<sup>th</sup> 2023**

**12:04 PM MST**

**AT THE RANCH NORTH OF RAPID CITY, SD**



# AMDAHL ANGUS & HEREFORD

*Our number one mission is customer satisfaction and adding profitability  
to your bottom line through extensive maternal selection*

## Thursday, December 7th, 2023

Annual Production Sale  
12:04 PM MT • at the Ranch 12 miles N. of Rapid City, SD  
Breakfast and lunch will be served starting at 10 AM

**Hereford Female  
dispersion  
starting at lot 116**



### Sale Day Phones

Tim: 605-929-3717 | JD: 605-999-6487



#### Auctioneer

Doug Dietterle  
605-580-1362



Wes Tiemann  
816-244-4462

### Sale Representatives

Marc Hotchkiss, The Livestock Link ..... 605-490-1513  
Scott Dirk, Tri-State Livestock News ..... 605-380-6024  
Beau Ravellette, RPI Promotions..... 605-685-8155  
Don Ravellette, RPI Promotions ..... 605-685-5147  
Rod Geppert, American Angus Association ..... 605-295-3673  
Chris Earl, CK6 Consulting ..... 630-675-6559  
Kody Fleeman..... 573-881-0117  
Kaden Leddy, The Cattle Business Weekly..... 605-924-0757  
Art Handel, Handel Cattle Consulting..... 605-391-8233  
Aaron Freidt, American Hereford Association..... 701-590-9597

**New Cornerstone Herd Sire,  
HUWA STEADFAST**

This sale will be broadcast live on the internet.

**DVAuction**  
Broadcasting Real-Time Auctions

Real time bidding & proxy bidding available.

**Pictures were taken the  
middle of October**

visit us on the web to view photos & videos

## AmdahlAngusandHereford.com

**Tim Amdahl: 605-929-3717 • JD Amdahl: 605-999-6487**

**Tim & Marcia Amdahl, JD & Annie Amdahl**

21747 Coyote Lane, Piedmont, SD 57769

jarredamdahl@gmail.com



*Raising beef cattle in South Dakota since 1884 | Registered Cattle since 1972*

# Welcome to the AMDAHL RANCH 2023 BULL & FEMALE SALE

Welcome to our December 7th, 2023 Bull and Female Sale! We once again feel blessed to not only work with livestock on a daily basis, but continue to do what we love and enjoy alongside people like you all. We so appreciate your interest in our program and look forward to serving you in your breeding decisions and seed stock needs.

All cattle are born and raised right on the ranch. Calves are not creep fed. As the weaning weights increase, we feel confident that our genetics continue to excel in our harsh western climate.

Whether you're in the commercial or registered cattle business, we know the key to your success is producing a live calf at birth and the top cut quality calf that weighs down the scales come weaning time, still keeping as our top priority that females are the backbone to any successful operation. That's why we base our breeding decisions on maternal traits, growth and structural soundness.

We are especially excited to offer some cutting edge ET bulls and females along with some excellent bred females. It's exciting to own some new sires that we feel will really compliment our breeding program.

The bulls will be semen tested, vaccinated and branded and will be ready to head to your ranch starting March 1st, 2024.

Thank you again for investing and showing your support to our family as we hold our annual sale. We hope that you contact us directly if you have any specific questions or if we can be of any assistance at all. We are here to serve you for your cattle needs. We so appreciate your interest in the Amdahl Ranch Program.

*J.D. and Annie Amdahl*

Welcome to the Ranch! As life moves on, there comes a time to start transitioning to the next generation. We have decided to disperse our registered Hereford cow herd. We are selling bred cows, open heifers, fall pairs, herd bulls, embryos and semen.

We built our Hereford cow herd with the best of Baker, Cooper and Holden genetics, along with embryo work, AI and top herd bulls. Our recent herd bulls we really liked including Upoar 946 from Baumgartens 2020 Denver Champion Carload, 2 top end herd sires selected from Fredrickson Ranch, Highland 1403 and Historic 0156 and an outstanding herd bull from Bar Star Herefords, Belong 2170 who was in the 2023 Denver Stock Show Pen of 3. We offer both polled and horned Hereford genetics.

We have selected and bred our Hereford and Angus cows for the last 51 years for traits such as calving ease, udder, feet, breed back, performance and carcass traits. It's a great opportunity for you to get in on some great Hereford genetics to excel your herd.

Our Hereford females will go on to perform well in anyone's herd. We look forward to showing you what we have worked so hard on for years!

*Sincerely, Tim and Marcia Amdahl*



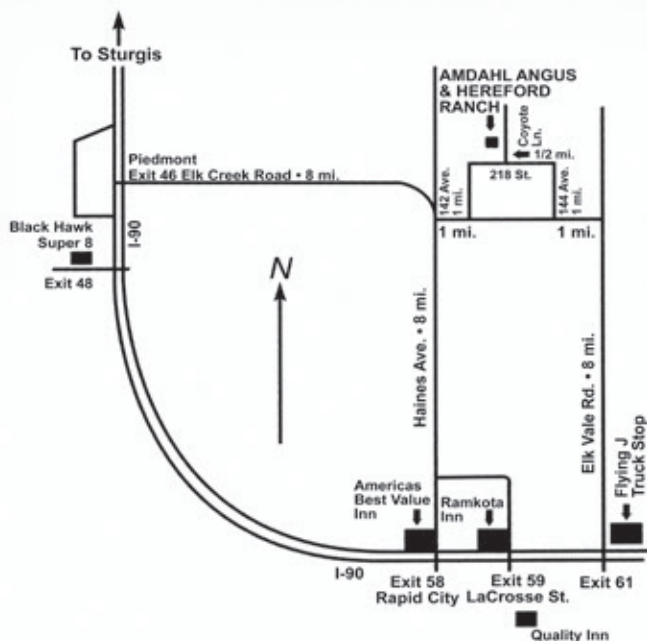
Tim & Marcia Amdahl



J.D., Annie, Coley, Maverick, and Scout Amdahl



Everett Mockabee - hired hand



**S  
E  
L  
L  
I  
N  
G**

## ANGUS

- ◆ 70 Angus Bulls
- ◆ 1 Angus Donor cow
- ◆ 6 Angus Open Heifers
- ◆ 8 Angus Bred Females
- ◆ 100 Commercial Bred Angus Heifers

## HEREFORDS

- ◆ 28 Hereford Bulls
- ◆ 22 Hereford Open Heifers
- ◆ 50 Spring Bred Hereford Cows
- ◆ 5 Hereford Fall Pairs
- ◆ 18 Hereford Bred Heifers



# Sale Day Information

## Guarantee

All bulls selling will be covered 50% by the Amdahl's until September 1, 2024. Buyer must let us know immediately if injury occurs to a bull. If a bull becomes injured and does not recover, we will give you credit towards one replacement bull or credit in next years sale less salvage value (\$2,500). Bull needs to be evaluated by a qualified vet before selling. We want to work with our customers in their future success. We are here to help and encourage you in the cattle business. If our customers want additional coverage it will be available sale day.

## Wintering Info

Bulls will be wintered/fed until March 1st. They'll be semen tested, vaccinated and freeze branded before leaving. If bulls need to be kept longer, we can make arrangements at feed cost. Females kept longer than 1 week after the sale will be charged for feed.

## Delivery

We will start delivery on the bulls March 1st. Bulls qualify for up to 300 miles free delivery or if you purchase three or more bulls free nationwide delivery. We are not offering free delivery on any females, but we will be happy to assist with trucking arrangements.

## Volume Discount

We offer volume discounts according to the number of bulls you purchase. Purchase 3 bulls get 3% off, up to 5%. Must be bought by one individual.

## Terms and Conditions

Amdahl Ranch is selling 100% of bulls and females. We reserve the right to collect a few select bulls at buyers convenience. Unless otherwise announced sale day.

## Sale Order

Sale order will be available and posted sale day.

## Marketing Options

It would be our pleasure to help assist you in your marketing needs on cattle sired by our bulls. We have order buyers feeders and heifer developers that we would help facilitate contracts between buyers and sellers.

## DNA Testing

Angus bulls have been HD50K tested and tested to be defect free. And for accuracy in calving ease, maternal and Carcass quality.

## Inspection of Cattle

Cattle will be available for inspection at the ranch anytime prior to the sale, call to make arrangements.

## Health

Interstate health papers furnished on all cattle selling.

## EPDs & \$Values

The American Angus Association is now calculating EPDs on a weekly basis using all available carcass harvest data, ultrasound data and the Igenity Angus specific genome profile data. It is possible new data has been submitted between the date the catalog was finalized and sale day which will affect the individual EPDs and \$Value Indexes of the animals selling. If your purchasing decision relies highly on the most current carcass data available, please look up animals of interest on the American Angus Association web page prior to viewing the sale offering.

## Supplement Sheets

Will be available sale day with any updates.

## Lunch

Lunch will be available sale day.

## Sight-Unseen Purchases

If you can't attend our sale, we would be happy to help you select and purchase your bull. We know our bulls well and by visiting with you, we feel we can buy a bull that will fit your program. Some people prefer this. Call anytime at 605-929-3717 or 605-999-6487.

**We have the strongest set of bulls we have ever offered front to back in our catalog. We would like to show you our bulls and females before sale day. We appreciate you as a customer and look forward to working with you.**

## OUR 5-STAR SYSTEM

★★★★★

## CALVING EASE

5-Star Rating System: Most of our bulls offered for sale could be used on first calf heifers due to shape and size. To help you identify our calving ease proven bulls, we have a 5-Star rated system, 5-Star being our easiest calving. Our 1 and 2 Stars are for cows, because the sires are less proven on heifers. Our 3, 4 & 5-Star rated bulls are out of proven calving ease bloodlines for birth weight and shape. These bulls will work the easiest on heifers.

## Additional Insurance

Will be available sale day.

## Liability

All persons attending this sale do so at their own risk, legal or otherwise, for their safety or the behavior of the animals. The Owners, Auction Service and Sale Staff assume no liability for property loss or any accidents that may occur.

## Announcements

From the block will take precedence over the catalog. Buyers unable to attend may send their bids to the Auction Service, Field Representatives or Auctioneer.





## Sire



## Baldrige Flagstone F411

BD: 5/09/2018 Reg No: +\*19478642 Tattoo: F411

Hoover No Doubt  
Sire  
Mogck Bullseye  
Miss Blackcap Ellston J2

MOGCK Sure Shot  
Mogck Mary 1255  
SydGen C C & 7  
Miss Blackcap Ellston D154

Baldrige Isabel Y69  
Dam  
Styles Upgrade J59  
Baldrige Isabel T935

Sitz Upward 307R  
Plainview Lassie 71B  
Baldrige Kaboom K243 KCF  
Baldrige Isabel P4527

CED	BW	WW	YW	DOC	HP	Milk	CW	MB	RE	\$M	\$C
-2	+3.7	+72	+130	+34	+8.0	+29	+63	+0.91	+0.63	+79	+305

### Lot 1 AMDAHL FLAGSTONE 2243

BD: 8/14/22 Reg No: 20627353 Tattoo: 2243

Sire: BALDRIDGE FLAGSTONE F411



BUBS SOUTHERN CHARM AA31  
AMDAHL ERICA HICKOK 544-9209  
Dam  
AMDAHL ERICA HICKOK 104-544

SILVEIRAS CONVERSION 8064  
HICKORY HILL ERICA 009  
MILL BAR HICKOK 7242  
D R ERICA 104

BW	83
Adj. 205	856
C/E	2

CED	BW	WW	YW	DOC	HP	Milk	CW	MB	RE	\$M	\$C
+6	+1.4	+74	+138	+31	+6.3	+25	+66	+0.57	+0.92	+52	+263

#### • SALE FEATURE

#### • FALL BULL

- Recommended for cows.
- 2243 absolutely offers everything you want in a herd bull.
- He earned a massive 205 day weight of 856lbs for a weaning ratio of 118 (no creep feed).
- He has great docility, foot scores, scrotal and just overall performance.

His dam, Amdahl Erica 9209 has recently joined the donor pen and will be a cornerstone female in the future. Her calving intervals are 3 at 356 with a nursing ratio 2 at 113. She is as complete of a female as they come.

We would like to reserve the right to collect 100 straws on 2243.

#### FULL BROTHER TO LOT 2



#### DAM OF LOT 1



#### DAM OF LOT 2



### Lot 2 AMDAHL FLAGSTONE 2239

BD: 8/5/22 Reg No: 20625648 Tattoo: 2239

Sire: BALDRIDGE FLAGSTONE F411



AMDAHL'S HEAVY DUTY 323  
AMDAHL QUEEN DOLLY 418-707  
Dam  
AMDAHL MISS CONSENSUS 72-418

W H S LIMELIGHT 64V  
D R BLACKBIRD 133  
SCHELSKES CONSENSUS 2327A  
PAR TRAVELING WESTWIND 72

BW	76
Adj. 205	714
C/E	1

CED	BW	WW	YW	DOC	HP	Milk	CW	MB	RE	\$M	\$C
-3	+5.2	+76	+128	+29	+3.8	+24	+55	+0.78	+0.94	+57	+271

#### • SALE FEATURE

#### • FALL BULL

- Recommended for cows.
- One of the most complete bulls in the entire sale.
- Great feet and very docile.
- His dam, Amdahl Queen Dolly 707 is a highly proven donor that has earned a nursing ratio of 104 on her 4 natural calves.
- His full brother, Amdahl Flagstone 1037 has been used heavily in the program.





# ANGUS BULLS



**Lot 3** **AMDAHL FLAGSTONE 2240**  
 BD: 8/5/22 Reg No: 20625649 Tattoo: 2240

Sire: **BALDRIDGE FLAGSTONE F411**



DEER VALLEY GROWTH FUND  
 AMDAHL ERICA HICKOK 544-9202  
 Dam AMDAHL ERICA HICKOK 104-544

BASIN PAYWEIGHT 1682  
 DEER VALLEY RITA 36113  
 MILL BAR HICKOK 7242  
 D R ERICA 104

BW
ET
Adj. 205
794
C/E
2

CED	BW	WW	YW	DOC	HP	Milk	CW	MB	RE	\$M	\$C
+4	+1.2	+94	+163	+23	+14.7	+27	+75	+0.13	+0.64	+71	+249

**• SALE FEATURE**

**• FALL BULL**

- Lots 3-8 are full brothers
- Recommended for cows.
- These flush brothers will add docility, performance and foot structure.
- They will make exceptional feeder steers that will press down the scales.
- Full brother was a sale highlight in the 2022 sale and was purchased by Risse Angus.
- Their donor dam, Amdahl Erica Hickok 9202 is starting to leave her mark in our program with many daughters retained and in production.
- Two full sisters were purchased by Green Mountain Angus and Palm Angus.



**Lot 4** **AMDAHL FLAGSTONE 3054**  
 BD: 12/29/22 Reg No: 20768464 Tattoo: 3054



BW	Adj. 205	C/E
ET	856	3

CED	BW	WW	YW	DOC	HP	Milk	CW	MB	RE	\$M	\$C
+9	+1.4	+83	+139	+27	+11.7	+30	+59	+0.39	+0.87	+71	+255



**Lot 5** **AMDAHL FLAGSTONE 3031**  
 BD: 12/25/22 Reg No: 20752177 Tattoo: 3031



BW	Adj. 205	C/E
ET	791	2

CED	BW	WW	YW	DOC	HP	Milk	CW	MB	RE	\$M	\$C
+5	+2.4	+79	+138	+31	+12.4	+24	+58	+0.84	+0.32	+69	+277

**Lot 6** **AMDAHL FLAGSTONE 3063**  
 BD: 12/30/22 Reg No: 20768466 Tattoo: 3063



BW	Adj. 205	C/E
ET	717	4

CED	BW	WW	YW	DOC	HP	Milk	CW	MB	RE	\$M	\$C
+11	+0.8	+90	+158	+33	+11.0	+31	+61	+0.63	+0.52	+80	+267

**Lot 7** **AMDAHL FLAGSTONE 3076**  
 BD: 1/3/23 Reg No: 20768468 Tattoo: 3076



BW	Adj. 205	C/E
ET	643	2

CED	BW	WW	YW	DOC	HP	Milk	CW	MB	RE	\$M	\$C
+5	+2.1	+90	+147	+32	+14.3	+29	+60	+0.50	+0.42	+89	+267

**Lot 8** **AMDAHL FLAGSTONE 3044**  
 BD: 12/28/22 Reg No: 20768490 Tattoo: 3044



BW	Adj. 205	C/E
ET	ET	2

CED	BW	WW	YW	DOC	HP	Milk	CW	MB	RE	\$M	\$C
+2	+2.1	+83	+146	+25	+9.1	+34	+68	+0.69	+0.44	+55	+264



# ANGUS BULLS

## Lot 9 **AMDAHL FLAGSTONE 3064**

BD: 12/30/22 Reg No: 20768488 Tattoo: 3064

Sire: **BALDRIDGE FLAGSTONE F411**



G A R PROPHET

AMDAHL ERICA 431-465

Dam SA 1117 HOMER 431 228

C R A BEXTOR 872 5205 608

G A R OBJECTIVE 1885

S A 650H HOMER 1117 911

S A 8210 ANCHOR 228 630

BW
ET
Adj. 205
759
C/E
2

CED	BW	WW	YW	DOC	HP	Milk	CW	MB	RE	\$M	\$C
+4	+2.1	+73	+126	+14	+9.9	+30	+65	+0.67	+0.61	+65	+269

### • SALE FEATURE

- ET full brothers lots 9-15
- Recommended for cows.
- If you want to add pounds at weaning, these full brothers will get the job done.
- Their dam, Amdahl Erica 465 is a cornerstone donor cow in the program. She has earned a nursing ratio of 105 on her 5 natural calves.
- Amdahl Rocketeer and Amdahl Black River are maternal brothers to this flush of bulls.



9

## Lot 10 **AMDAHL FLAGSTONE 3069**

BD: 1/1/23 Reg No: 20768489 Tattoo: 3069



BW	Adj. 205	C/E
ET	837	2

CED	BW	WW	YW	DOC	HP	Milk	CW	MB	RE	\$M	\$C
+0	+4.6	+85	+136	+26	+5.8	+20	+51	+0.89	+0.46	+66	+248



**AMDAHL ERICA 431-465**  
DAM OF LOTS 9-15

## Lot 11 **AMDAHL FLAGSTONE 3077**

BD: 1/3/23 Reg No: 20768469 Tattoo: 3077



BW	Adj. 205	C/E
ET	677	2

CED	BW	WW	YW	DOC	HP	Milk	CW	MB	RE	\$M	\$C
+0	+3.6	+85	+140	+29	+3.1	+17	+66	+1.09	+0.57	+59	+289



**AMDAHL ROCKETEER 636**  
MATERNAL BROTHER OF LOTS 9-15

## Lot 12 **AMDAHL FLAGSTONE 3055**

BD: 12/29/22 Reg No: 20768463 Tattoo: 3055



BW	Adj. 205	C/E
ET	ET	2

CED	BW	WW	YW	DOC	HP	Milk	CW	MB	RE	\$M	\$C
+6	+2.3	+72	+121	+31	+6.2	+33	+42	+0.86	+0.09	+75	+242



**AMDAHL BLACK RIVER 093**  
MATERNAL BROTHER OF LOTS 9-15

## Lot 13 **AMDAHL FLAGSTONE 3078**

BD: 1/3/23 Reg No: 20768470 Tattoo: 3078



BW	Adj. 205	C/E
ET	713	2

CED	BW	WW	YW	DOC	HP	Milk	CW	MB	RE	\$M	\$C
+7	+0.8	+64	+112	+22	+7.9	+33	+35	+0.86	+0.35	+72	+237

## Lot 14 **AMDAHL FLAGSTONE 3081**

BD: 1/4/23 Reg No: 20768472 Tattoo: 3081

BW	Adj. 205	C/E
ET	657	2

CED	BW	WW	YW	DOC	HP	Milk	CW	MB	RE	\$M	\$C
+2	+2.7	+71	+122	+22	+7.9	+29	+50	+0.85	+0.44	+68	+261

## Lot 15 **AMDAHL FLAGSTONE 3085**

BD: 1/5/23 Reg No: 20768473 Tattoo: 3085



BW	Adj. 205	C/E
ET	694	2

CED	BW	WW	YW	DOC	HP	Milk	CW	MB	RE	\$M	\$C
+3	+3.3	+67	+114	+16	+7.9	+25	+33	+0.76	+0.25	+79	+228



# ANGUS BULLS



**Lot 16** **AMDAHL FLAGSTONE 3009**  
 BD: 12/17/22 Reg No: 20768448 Tattoo: 3009

Sire: **BALDRIDGE FLAGSTONE F411**



MUSGRAVE BIG SKY  
 AMDAHL ERICA 543-7127  
 Dam PAR BROADSIDE ECHELON 543

CONNEALY EARNAN 076E  
 SAV PRIMROSE 7861  
 P A R DAKOTA BROADSIDE 261  
 P A R ERICA'S ECHELON 301

BW
82
Adj. 205
793
C/E
2

CED	BW	WW	YW	DOC	HP	Milk	CW	MB	RE	\$M	\$C
+0	+3.3	+75	+134	+21	+8.5	+27	+55	+0.81	+0.51	+70	+265

- Recommended for cows.
- 3009 is a long bodied Flagstone son.
- His dam is a beautiful 6 year old Big Sky daughter who has earned a nursing ratio of 104 on her 4 calves.

**Lot 18** **AMDAHL FLAGSTONE 3015**  
 BD: 12/19/22 Reg No: 20768450 Tattoo: 3015

Sire: **BALDRIDGE FLAGSTONE F411**



SCHELSKE'S CONSENSUS 2327A  
 AMDAHL MISS CONSENSUS 72-418  
 Dam PAR TRAVELING WESTWIND 72

CONNEALY CONSENSUS 7229  
 D 104 MONIQUE R585  
 G A R TRAVELER 1489  
 P A R TRAVELING WESTWIND D30

BW
81
Adj. 205
725
C/E
2

CED	BW	WW	YW	DOC	HP	Milk	CW	MB	RE	\$M	\$C
+6	+1.6	+64	+116	+21	+2.1	+29	+46	+0.55	+0.39	+68	+238

- Recommended for cows.
- 3015 is a big time female maker.
- His dam has a nursing ratio of 103 on her 6 calves.

**Lot 19** **AMDAHL FLAGSTONE 3101**  
 BD: 1/12/23 Reg No: 20769574 Tattoo: 3101

Sire: **BALDRIDGE FLAGSTONE F411**



S A V PURSUIT 0160  
 AMDAHL ERICA 465-760  
 Dam AMDAHL ERICA 431-465

S A V PIONEER 7301  
 S A V ABIGALE 5650  
 G A R PROPHET  
 S A 1117 HOMER 431 228

BW
ET
Adj. 205
743
C/E
2

CED	BW	WW	YW	DOC	HP	Milk	CW	MB	RE	\$M	\$C
-2	+3.8	+71	+126	+24	+7.7	+27	+61	+0.55	+0.40	+48	+244

- **SALE FEATURE**
- ET full brothers lots 19-21
- Recommended for cows.
- These bulls will add maternal and overall profitability to any program.
- Out of the great donor cow family- 760 and 465.
- Their dam 760 earned her way to the donor pen for her outstanding production, femininity and structural correctness.
- She has earned a nursing ratio of 102 on her 5 calves.
- 760 is a maternal sister to Amdahl Rocketeer and Amdahl Black River.



AMDAHL ERICA 465-760 – DAM OF LOTS 19-21

**Lot 17** **AMDAHL FLAGSTONE 3003**  
 BD: 12/6/22 Reg No: 20768445 Tattoo: 3003

Sire: **BALDRIDGE FLAGSTONE F411**



MUSGRAVE BIG SKY  
 AMDAHL DIXIE ERICA 069-619  
 Dam AMDAHL DIXIE ERICA 711P 069

CONNEALY EARNAN 076E  
 SAV PRIMROSE 7861  
 P A R HOMER 62  
 O C C DIXIE ERICA 711P

BW
81
Adj. 205
749
C/E
2

CED	BW	WW	YW	DOC	HP	Milk	CW	MB	RE	\$M	\$C
-2	+3.0	+64	+113	+25	+8.0	+31	+40	+0.64	+0.27	+58	+225

- Recommended for cows.
- 3003 is a larger framed Flagstone son who offers exceptional thickness and depth of rib.



**Lot 20** **AMDAHL FLAGSTONE 3096**  
 BD: 1/11/23 Reg No: 20771458 Tattoo: 3096



BW
ET
Adj. 205
653
C/E
2

CED	BW	WW	YW	DOC	HP	Milk	CW	MB	RE	\$M	\$C
+3	+2.4	+62	+103	+24	+10.6	+30	+38	+0.73	+0.63	+71	+250

**Lot 21** **AMDAHL FLAGSTONE 3108**  
 BD: 1/15/23 Reg No: 20769575 Tattoo: 3108



BW
ET
Adj. 205
661
C/E
2

CED	BW	WW	YW	DOC	HP	Milk	CW	MB	RE	\$M	\$C
+1	+3.2	+55	+98	+18	+11.1	+31	+40	+0.48	+0.67	+70	+241



# ANGUS BULLS

## Sire



## Amdahl Black River 093

BD: 1/21/2020 Reg No: +\*19799437 Tattoo: 093

Sire **Bar R Jet Black 5063**  
 Connealy Black Granite  
 Bar R Iris Anita 0113

Connealy Consensus 7229  
 Eura Elga of Conanga 9109  
 Sitz Upward 307R  
 Bar R Anita 7081

Dam **Amdahl Erica 431-465**  
 G A R Prophet  
 S A 1117 Homer 431 228

C R A Bextor 872 5205 608  
 G A R Objective 1885  
 S A 650H Homer 1117 911  
 S A 8210 Anchor 228 630

CED	BW	WW	YW	DOC	HP	Milk	CW	MB	RE	\$M	\$C
+6	+3.4	+92	+154	+14	+8.7	+28	+68	+0.37	+0.91	+66	+258



## Lot 22 AMDAHL BLACK RIVER 3041

BD: 12/27/22 Reg No: 20768457 Tattoo: 3041

Sire: AMDAHL BLACK RIVER 093



Dam **AMDAHL BLACKBIRD 974**  
 HA PRIME CUT 4493  
 AMDAHL'S BLACKBIRD 120-414

VERMILION SIRLOIN  
 HA MISS BLACKCAP 9127  
 SA 652 MISSING LINK 848 620  
 D R BLACKBIRD 120

BW
86
Adj. 205
821
C/E
3

CED	BW	WW	YW	DOC	HP	Milk	CW	MB	RE	\$M	\$C
+10	+2.9	+79	+133	+7	+3.1	+24	+51	+0.42	+0.75	+36	+202

### SALE FEATURE

- Recommended for cows.
- It will not be hard to find this Black River son in the pen.
- He really does have it all.
- Dam WR 2 at 112.
- We would like to reserve the right to collect 100 straws on 3041.



## Lot 23 AMDAHL BLACK RIVER 3058

BD: 12/30/22 Reg No: 20768461 Tattoo: 3058

Sire: AMDAHL BLACK RIVER 093



Dam **AMDAHL DIXIE 097**  
 AMDAHL HEAVY PLUS 805  
 AMDAHL DIXIE 014 841

AMDAHL'S HEAVY DUTY 323  
 AMDAHL JD ANNIE 294-405  
 HA COWBOY UP 5405  
 AMDAHL DIXIE 7402 014

BW
77
Adj. 205
842
C/E
3

CED	BW	WW	YW	DOC	HP	Milk	CW	MB	RE	\$M	\$C
+9	+1.5	+84	+151	+22	+7.3	+18	+61	+0.58	+0.83	+46	+252

- Recommended for heifers or cows.
- A bold hip on this attractively made dude.
- 3058 earned an impressive 205 day weight of 842lbs.

## Lot 24 AMDAHL BLACK RIVER 3004

BD: 12/9/22 Reg No: 20768446 Tattoo: 3004

Sire: AMDAHL BLACK RIVER 093



Dam **AMDAHL'S PROMISE 716-736**  
 AMDAHL'S ALL AMERICAN 324  
 AMDAHL HOMERS PROMISE 72-716

MYTTY IN FOCUS  
 D R QUEEN 127  
 P A R HOMER 62  
 PAR TRAVELING WESTWIND 72

BW
81
Adj. 205
815
C/E
3

CED	BW	WW	YW	DOC	HP	Milk	CW	MB	RE	\$M	\$C
+10	+2.0	+61	+94	-1	+6.9	+25	+46	+0.17	+0.56	+61	+214

### SALE FEATURE

- Recommended for larger framed heifers and cows.
- One of the very best Black River sons to date.
- He earned a massive 815lbs weaning weight for a ratio of 110.
- His dam has earned a nursing ratio of 103 on her 4 calves.



MATERNAL BROTHER TO LOT 24



# ANGUS BULLS



**Lot 25** **AMDAHL BLACK RIVER 3005**  
 BD: 12/9/22 Reg No: 20768447 Tattoo: 3005

Sire: **AMDAHL BLACK RIVER 093**



MYTTY IN FOCUS  
 D R BLACKCAP 121  
 Dam D R BLACKCAP 2715

S A F FOCUS OF E R  
 MYTTY COUNTESS 906  
 O C C NEUTON 713  
 D R MISS IDEAL 9127

BW
79
Adj. 205
820
C/E
4

CED	BW	WW	YW	DOC	HP	Milk	CW	MB	RE	\$M	\$C
+11	+1.1	+75	+117	+9	+8.2	+22	+54	+0.42	+0.36	+65	+234

- Recommended for heifers.
- 3005 is out of a Pathfinder dam.
- He earned an impressive 820lbs weaning weight.
- His dam has earned a weaning ratio of 107 on her 9 calves.



**Lot 26** **AMDAHL BLACK RIVER 3138**  
 BD: 1/30/23 Reg No: 20774093 Tattoo: 3138

Sire: **AMDAHL BLACK RIVER 093**



HA PRIME CUT 4493  
 AMDAHL MISS PRIME 942  
 Dam AMDAHL'S MISS LEGEND 2170-387

VERMILION SIRLOIN  
 HA MISS BLACKCAP 9127  
 AMDAHL'S LEGEND 804  
 K S U MISS ALLIANCE 2170

BW
83
Adj. 205
828
C/E
3

CED	BW	WW	YW	DOC	HP	Milk	CW	MB	RE	\$M	\$C
-4	+4.4	+88	+151	+15	+7.7	+25	+79	+0.45	+0.84	+41	+259

- **SALE FEATURE**
- Recommended for cows.
- It won't be hard to spot this strong topped herd bull.
- This guy is out of one of the best 2019 model cows.
- Dam NR 2 at 117.
- He earned a massive 828lbs weaning weight for a ratio of 126.



**Lot 27** **AMDAHL BLACK RIVER 3128**  
 BD: 1/27/23 Reg No: 20768483 Tattoo: 3128

Sire: **AMDAHL BLACK RIVER 093**



AMDAHL'S HEAVY DUTY 323  
 AMDAHL MISS HVY DUTY 103-517  
 Dam AMDAHL MISS ULTIMATE 747W-103

W H S LIMELIGHT 64V  
 D R BLACKBIRD 133  
 AMDAHL'S ULTIMATE 802  
 O C C MISS NEWSLINE 747W

BW
83
Adj. 205
760
C/E
2

CED	BW	WW	YW	DOC	HP	Milk	CW	MB	RE	\$M	\$C
+5	+3.0	+89	+149	+14	+10.8	+26	+63	+0.16	+0.74	+51	+229

- Recommended for cows.
- He offers true herd bull look and is thick from front to back.
- Dam NR 7 at 105.

**Lot 28** **AMDAHL BLACK RIVER 3028**  
 BD: 12/22/22 Reg No: 20768452 Tattoo: 3028

Sire: **AMDAHL BLACK RIVER 093**



AMDAHL'S AMTRAK 618  
 AMDAHL EMMA 445-815  
 Dam AMDAHL EMMA 144-445

V D A R BLACK TRAIN 1243  
 AMDAHL QUEEN 709-404  
 AMDAHL'S EMBAZON 0005  
 D R EMMA 144

BW
88
Adj. 205
728
C/E
1

CED	BW	WW	YW	DOC	HP	Milk	CW	MB	RE	\$M	\$C
+6	+2.2	+66	+122	+8	+5.9	+25	+51	+0.73	+0.58	+54	+246

- Recommended for cows.
- Big and powerful cow bull right here.
- He offers exceptional length of body and maternal merit.

**Lot 29** **AMDAHL BLACK RIVER 3088**  
 BD: 1/7/23 Reg No: 20768475 Tattoo: 3088

Sire: **AMDAHL BLACK RIVER 093**



BALDRIDGE FLAGSTONE F411  
 AMDAHL MISS ISABEL 1009  
 Dam AMDAHL MISS AVIATOR 233-8109

HOOVER NO DOUBT  
 BALDRIDGE ISABEL Y69  
 BVC AVIATOR 4007  
 PAR BROADSIDE LINK 233

BW
85
Adj. 205
827
C/E
2

CED	BW	WW	YW	DOC	HP	Milk	CW	MB	RE	\$M	\$C
+1	+4.4	+74	+131	+23	+4.0	+28	+61	+0.36	+0.74	+62	+253

- This good looking bull will add pounds to your calf crop.
- He earned a weaning weight of 827lbs.



# ANGUS BULLS

## Lot 30 **AMDAHL BLACK RIVER 3127**

BD: 1/27/23 Reg No: 20768482 Tattoo: 3127

Sire: **AMDAHL BLACK RIVER 093**

	HA COWBOY UP 5405	HA OUTSIDE 3008	BW
	AMDAHL DIXIE 014 841	HA BLACKCAP LADY 1602	81
	Dam AMDAHL DIXIE 7402 014	O C C LINEBRED 661L	Adj. 205
		JAUER 173 ANCHOR 2011 7402	711
		C/E	
		2	

CED	BW	WW	YW	DOC	HP	Milk	CW	MB	RE	\$M	\$C
+5	+4.1	+77	+126	+10	+1.7	+18	+32	+0.34	+0.10	+38	+164

- Recommended for heifers or cows.
- He earned a weaning ratio of 114.
- Dam is a great uddered All American daughter.

## Lot 31 **AMDAHL BLACK RIVER 3034**

BD: 12/25/22 Reg No: 20768454 Tattoo: 3034

Sire: **AMDAHL BLACK RIVER 093**

	AMDAHL PRIME BEEF 9100	HA PRIME CUT 4493	BW
	AMDAHL MISS BLACKBIRD 1145	AMDAHL NIGHTWATCH 821 026	78
	Dam AMDAHL MISS BLACKBIRD 972	CONNEALY BLACK GRANITE	Adj. 205
		AMDAHL MISS EXTRA E17401-737	729
		C/E	
		4	

CED	BW	WW	YW	DOC	HP	Milk	CW	MB	RE	\$M	\$C
+13	+2.0	+70	+114	+7	+7.9	+30	+64	+0.38	+0.75	+61	+257

- Recommended for heifers.
- This bull offers a royal Amdahl pedigree with maternal merit.

## Lot 32 **AMDAHL BLACK RIVER 3079**

BD: 1/3/23 Reg No: 20768471 Tattoo: 3079

Sire: **AMDAHL BLACK RIVER 093**

	SITZ LOGO 7807	SITZ LOGO 12964	BW
	AMDAHL MISS BLACKBIRD 1097	SITZ BEEBE QUEEN 3833	81
	Dam AMDAHL MISS MVP 778-763	AMDAHL'S HEAVY DUTY 323	Adj. 205
		AMDAHL MISS BLOCK 778-378	812
		C/E	
		3	

CED	BW	WW	YW	DOC	HP	Milk	CW	MB	RE	\$M	\$C
+6	+3.6	+76	+123	+22	+6.8	+28	+54	+0.29	+0.99	+80	+245

- Recommended for cows.
- 3079 earned a 205 day weight of 812 for a weaning ratio of 110.

## Lot 33 **AMDAHL BLACK RIVER 3095**

BD: 1/11/23 Reg No: 20772191 Tattoo: 3095

Sire: **AMDAHL BLACK RIVER 093**

	AMDAHL PRIME BEEF 9100	HA PRIME CUT 4493	BW
	AMDAHL DIXIE ERICA 1090	AMDAHL NIGHTWATCH 821 026	79
	Dam AMDAHL MISS HEAVY 380-870	AMDAHL'S HEAVY DUTY 323	Adj. 205
		AMDAHL MISS HOMER 172-380	720
		C/E	
		3	

CED	BW	WW	YW	DOC	HP	Milk	CW	MB	RE	\$M	\$C
+4	+3.0	+64	+115	+14	+5.9	+34	+36	+0.47	+0.45	+47	+195

- Recommended for heifers or cows.
- Dam is well made Prime Beef daughter.
- 3095 is a great combination of Black River and Prime Beef.

## Lot 34 **AMDAHL BLACK RIVER 3118**

BD: 1/23/23 Reg No: 20768481 Tattoo: 3118

Sire: **AMDAHL BLACK RIVER 093**

	AMDAHL'S HEAVY DUTY 323	W H S LIMELIGHT 64V	BW
	AMDAHL MISS MVP 778-763	D R BLACKBIRD 133	84
	Dam AMDAHL MISS BLOCK 778-378	CB BLOCK PARTY 156	Adj. 205
		SA 48 HUNTER 778 506	705
		C/E	
		3	

CED	BW	WW	YW	DOC	HP	Milk	CW	MB	RE	\$M	\$C
+10	+1.1	+73	+122	+21	+10.2	+20	+43	+0.65	+0.51	+77	+247

- Recommended for cows.
- 3118 is a big, broadsided bull with great docility.

## Lot 35 **AMDAHL BLACK RIVER 3100**

BD: 1/12/23 Reg No: 20774091 Tattoo: 3100

Sire: **AMDAHL BLACK RIVER 093**

	SITZ UNMISTAKABLE 11796	O C C UNMISTAKABLE 946U	BW
	AMDAHL MISS BLACKCAP 1006	SITZ ELLUNAS ELITE 1374	82
	Dam AMDAHL MISS BLACKCAP 916	CONNEALY ARMORY	Adj. 205
		D R BLACKCAP 121	696
		C/E	
		3	

CED	BW	WW	YW	DOC	HP	Milk	CW	MB	RE	\$M	\$C
+3	+3.3	+60	+107	+6	+12.9	+33	+54	+0.29	+0.77	+66	+240

- Recommended for larger framed heifers or cows.
- Many Pathfinder cows in his pedigree.

## Lot 36 **AMDAHL BLACK RIVER 3093**

BD: 1/8/23 Reg No: 20768492 Tattoo: 3093

Sire: **AMDAHL BLACK RIVER 093**

	AMDAHL RANGE MASTER 830	HA COWBOY UP 5405	BW
	AMDAHL MISS ERICA 1002	AMDAHL MISS BP 380-509	73
	Dam AMDAHL MISS ERICA 440-7169	AMDAHL'S ALL AMERICAN 324	Adj. 205
		AMDAHL MISS PROPHET 041-440	691
		C/E	
		4	

CED	BW	WW	YW	DOC	HP	Milk	CW	MB	RE	\$M	\$C
+12	-0.1	+68	+118	+11	+5.7	+19	+37	+0.49	+0.61	+77	+238

- Highly recommended for heifers.
- 3093 is a true heifer bull that will make exceptional females.

## Lot 37 **AMDAHL BLACK RIVER 3113**

BD: 1/19/23 Reg No: 20768480 Tattoo: 3113

Sire: **AMDAHL BLACK RIVER 093**

	AMDAHL PRIME BEEF 9100	HA PRIME CUT 4493	BW
	AMDAHL MISS JUDY 1160	AMDAHL NIGHTWATCH 821 026	77
	Dam AMDAHL MISS JUDY 9110	SPRING COVE RENO 4021	Adj. 205
		AMDAHL MISS JUDY 407-7180	713
		C/E	
		4	

CED	BW	WW	YW	DOC	HP	Milk	CW	MB	RE	\$M	\$C
+6	+1.1	+63	+112	+12	+4.0	+24	+54	+0.27	+1.03	+53	+236

- Recommended for heifers.
- He is good footed and deep bodied.



# ANGUS BULLS

## Lot 38 AMDAHL BLACK RIVER 3126

BD: 1/27/23 Reg No: 20768493 Tattoo: 3126

Sire: AMDAHL BLACK RIVER 093

	AMDAHL'S ALL AMERICAN 324	MYTTY IN FOCUS
	AMDAHL DIXIE ERICA 087	D R QUEEN 127
	Dam AMDAHL DIXIE ERICA 644-866	CTS REMEDY 1T01
		AMDAHL DIXIE ERICA 382-644

BW	78
Adj. 205	690
C/E	4

CED	BW	WW	YW	DOC	HP	Milk	CW	MB	RE	\$M	\$C
+10	+1.0	+69	+123	+24	+8.1	+18	+38	+0.25	+0.62	+48	+189

- Recommended for heifers or cows.
- Dam is an easy fleshing Cowboy Up daughter.
- He is moderate and thick.

## Sire



## Lot 39 AMDAHL BLACK RIVER 3129

BD: 1/27/23 Reg No: 20774094 Tattoo: 3129

Sire: AMDAHL BLACK RIVER 093

	CTS REMEDY 1T01	CONNELLY THUNDER
	AMDAHL DIXIE ERICA 644-866	CTS 7V03 BELLEMERE MAID 9T02
	Dam AMDAHL DIXIE ERICA 382-644	CONNELLY BLACK GRANITE
		AMDAHL DIXIE ERICA 163-382

BW	77
Adj. 205	684
C/E	2

CED	BW	WW	YW	DOC	HP	Milk	CW	MB	RE	\$M	\$C
+9	+1.3	+61	+102	+4	+8.9	+32	+33	+0.46	+0.32	+80	+224

- Recommended for heifers or cows.
- 3129 is deep ribbed and easy fleshing dude here.
- Dam is a moderate and thick 5 year old cow.

## Ostrand Grand Island 491

BD: 01/03/2021 Reg No: \*20158696 Tattoo: 491

	MGR Treasure	V A R Discovery 2240
	Sire <b>Connealy Fortune 752L</b>	SJH Impression of 6108 1614
	Quick Fair of Conanga 831	Dr J Analyst M250
		Quick Fawn of Conanga 680
	Connealy Arsenal 2174	Connealy Packer 547
	Dam <b>S A Queen Idelette 28</b>	Black Rice of Conanga 9529
	S A Queen Idelette 306	R B Tour Of Duty 177
		S A Queen Idelette 373

CED	BW	WW	YW	DOC	HP	Milk	CW	MB	RE	\$M	\$C
+0	+3.7	+100	+181	+25	+10.3	+25	+79	+0.79	+0.61	+37	+270

## Lot 40 AMDAHL GRAND ISLAND 3022

BD: 12/21/22 Reg No: 20771010 Tattoo: 3022

Sire: OSTRAND GRAND ISLAND 491

	SCHELSKE'S CONSENSUS 2327A	CONNELLY CONSENSUS 7229
	AMDAHL JD MISS UPDATE50-5139	D 104 MONIQUE R585
	Dam P A R EMBLAZON 50	O C C EMBLAZON 854E
		P A R HEAVY DRIVE 478

BW	ET
Adj. 205	807
C/E	2

CED	BW	WW	YW	DOC	HP	Milk	CW	MB	RE	\$M	\$C
+0	+2.2	+78	+138	+28	+6.1	+24	+64	+0.72	+0.52	+41	+241

- **SALE FEATURE**
- ET full brothers - Lots 40 & 41
- Recommended for cows.
- This flush of bulls have second to none performance with top of the line maternal power.
- Their sire, Ostrand Grand Island was purchased with Green Mountain Angus for his outstanding performance and is backed by one of the very best Angus cows in the country, Queen Idelette 28.
- Their dam, Amdahl Miss Update 5139 is one of the most powerful Angus cows you will find. She has earned an impressive nursing ratio of 106 on her 5 natural calves.

## Lot 41 AMDAHL GRAND ISLAND 3052

BD: 12/28/22 Reg No: 20768462 Tattoo: 3052

Sire: OSTRAND GRAND ISLAND 491

	SCHELSKE'S CONSENSUS 2327A	CONNELLY CONSENSUS 7229
	AMDAHL JD MISS UPDATE50-5139	D 104 MONIQUE R585
	Dam P A R EMBLAZON 50	O C C EMBLAZON 854E
		P A R HEAVY DRIVE 478

BW	ET
Adj. 205	788
C/E	1

CED	BW	WW	YW	DOC	HP	Milk	CW	MB	RE	\$M	\$C
-6	+5.1	+89	+153	+32	+4.4	+24	+60	+0.65	+0.69	+36	+231

- **SALE FEATURE**
- ET full brothers - Lots 40 & 41



AMDAHL JD MISS UPDATE50-5139 - DAM OF LOT 40 & 41



# ANGUS BULLS



## Lot 42 AMDAHL GRAND ISLAND 3030

BD: 12/25/22 Reg No: 20768453 Tattoo: 3030

Sire: OSTRAND GRAND ISLAND 491



HA COWBOY UP 5405  
AMDAHL LADY BEULAH 038  
Dam D R LADY BEULAH 128

HA OUTSIDE 3008  
HA BLACKCAP LADY 1602  
S A V FINAL ANSWER 0035  
D R LADY BEULAH 7127

BW
85
Adj. 205
818
C/E
2

CED	BW	WW	YW	DOC	HP	Milk	CW	MB	RE	\$M	\$C
+6	+2.2	+95	+172	+16	+5.7	+16	+68	+0.80	+0.33	+23	+237

### SALE FEATURE

- Recommended for cows.
- You will be hard pressed to find a more complete bull in the entire offering.
- This Grand Island son is deep ribbed with extra style.
- He earned a weaning ratio of 110.
- His dam has earned a nursing ratio of 114 on her 2 calves.

## Lot 43 AMDAHL GRAND ISLAND 3021

BD: 12/21/22 Reg No: 20768487 Tattoo: 3021

Sire: OSTRAND GRAND ISLAND 491



CB BLOCK PARTY 156  
AMDAHL'S QUEEN B P 709-3101  
Dam AMDAHL HOMER QUEEN 531-709

WERNER WAR PARTY 2417  
CB 965 MAINLINE  
P A R HOMER 62  
P A R HEAVY QUEEN RITO 531

BW
83
Adj. 205
864
C/E
2

CED	BW	WW	YW	DOC	HP	Milk	CW	MB	RE	\$M	\$C
+1	+3.1	+79	+133	+20	+10.3	+23	+62	+0.87	+0.67	+40	+257

### SALE FEATURE

- Recommended for cows.
- This long bodied Grand Island son will surely make second to none replacement females.
- His dam has earned a nursing ratio of 107 on her 8 calves. She also has
- 9 calves with a calving interval of 356. His dam was recently purchased by Poss Angus.



AMDAHL MISS ERICA 440-7169  
DAM OF LOT 44



AMDAHL'S QUEEN B P 709-3101  
DAM OF LOT 43

## Lot 44 AMDAHL GRAND ISLAND 3046

BD: 12/28/22 Reg No: 20768458 Tattoo: 3046

Sire: OSTRAND GRAND ISLAND 491



AMDAHL'S ALL AMERICAN 324  
AMDAHL MISS ERICA 440-7169  
Dam AMDAHL MISS PROPHET 041-440

MYTTY IN FOCUS  
D R QUEEN 127  
G A R PROPHET  
AMDAHL'S MISS BLAZE 272 041

BW
84
Adj. 205
754
C/E
2

CED	BW	WW	YW	DOC	HP	Milk	CW	MB	RE	\$M	\$C
+8	+1.3	+78	+136	+24	+6.8	+25	+49	+1.00	+0.30	+51	+247

- Recommended for cows.
- 3046 has great herd bull look.
- Dam WR 5 at 102.

View Sale  
Videos here





## Sire



## RRR Free State R1110

BD: 04/24/2020 Reg No: +\*19867545 Tattoo: R1110

Sire **Sitz Accomplishment 720F**  
 — Poss Achievement  
 — Sitz Barabaramere Nell 166D

Poss Lasting Impact 3118  
 Poss Erica 327  
 S A V Resource 1441  
 Sitz Barabaramere Nell 14Y

Dam **Baldrige Erica E167**  
 — Baldrige 38 Special  
 — Erica of Ellston L5

EF Commando 1366  
 Baldrige Isabel Y69  
 Connealy Counselor  
 Erica of Ellston G366

CED	BW	WW	YW	DOC	HP	Milk	CW	MB	RE	\$M	\$C
+14	-0.9	+67	+121	+20	+17.2	+30	+47	+0.74	+0.62	+85	+267



## Lot 45 AMDAHL FREE STATE 3040

BD: 12/27/22 Reg No: 20768456 Tattoo: 3040

Sire: RRR FREE STATE R1110

Dam **AMDAHL JD MISS UPDATE50-5139**  
 — SCHELKES CONSENSUS 2327A  
 — P A R EMBLAZON 50

CONNEALY CONSENSUS 7229  
 D 104 MONIQUE R585  
 O C C EMBLAZON 854E  
 P A R HEAVY DRIVE 478

CED	BW	WW	YW	DOC	HP	Milk	CW	MB	RE	\$M	\$C
+0	+3.3	+75	+130	+25	+7.8	+33	+69	+0.67	+0.80	+56	+273

BW
ET
Adj. 205
765
C/E
2

### • SALE FEATURE

- 3040 is an ET herd bull prospect.
- He is a long bodied Free State son with exceptional growth and muscle expression.
- His dam, Amdahl Miss Update 5139 is one of the most powerful Angus cows you will find. She has earned an impressive nursing ratio of 106 on her 5 natural calves.



AMDAHL JD MISS UPDATE50-5139 - DAM OF LOT 45

View Sale Videos here



## Lot 46 AMDAHL FREE STATE 3091

BD: 1/8/23 Reg No: 20772190 Tattoo: 3091

Sire: RRR FREE STATE R1110

Dam **AMDAHL QUEEN DOLLY 0121**  
 — AMDAHL'S ROCKETEER 636  
 — PAR BROADSIDE QUEEN 363

MUSGRAVE AVIATOR  
 AMDAHL ERICA 431-465  
 P A R DAKOTA BROADSIDE 230  
 P A R MITCHELL'S QUEEN 108

CED	BW	WW	YW	DOC	HP	Milk	CW	MB	RE	\$M	\$C
+11	-1.0	+59	+110	+21	+14.5	+34	+47	+0.95	+0.78	+95	+297

BW
82
Adj. 205
801
C/E
3

### • SALE FEATURE

- Recommended for larger framed heifers or cows.
- 3091 has been a standout since birth.
- He earned a weaning ratio of 108.
- Note his 801 weaning weight.
- Dam is a long bodied Rocketeer daughter.



46



# ANGUS BULLS

## Lot 47 AMDAHL FREE STATE 3024

BD: 12/22/22 Reg No: 20768451 Tattoo: 3024

Sire: RRR FREE STATE R1110



G A R PHOENIX  
AMDAHL MISS DIXIE 056  
Dam AMDAHL MISS ULTIMATE 747W-103

G A R SURE FIRE  
G A R PROPHET N744  
AMDAHL'S ULTIMATE 802  
O C C MISS NEWSLINE 747W

BW
74
Adj. 205
772
C/E
5

CED	BW	WW	YW	DOC	HP	Milk	CW	MB	RE	\$M	\$C
+13	+0.2	+75	+121	+23	+8.7	+19	+58	+0.72	+0.72	+71	+266

### SALE FEATURE

- Recommended for heifers.
- Big spread heifer bull that is backed by generations of Pathfinder and donor cows.
- His young dam is off to a great start earning a nursing ratio of 106 on her 2 calves.



## Lot 48 AMDAHL FREE STATE 3013

BD: 12/18/22 Reg No: 20768449 Tattoo: 3013

Sire: RRR FREE STATE R1110



G A R PHOENIX  
AMDAHL MISS ELBA 017  
Dam PRA JUNEAU ONWARD 2239

G A R SURE FIRE  
G A R PROPHET N744  
KOU PAL JUNE AU 797  
PRA ONWARD VRD 9184

BW
64
Adj. 205
737
C/E
5

CED	BW	WW	YW	DOC	HP	Milk	CW	MB	RE	\$M	\$C
+15	-1.0	+51	+93	+16	+14.3	+31	+51	+1.04	+0.92	+83	+307

- Highly recommended for heifers.
- Big time carcass merit here.
- His dam has a calving interval of 2 at 346 days.



## Lot 49 AMDAHL FREE STATE 3050

BD: 12/28/22 Reg No: 20768460 Tattoo: 3050

Sire: RRR FREE STATE R1110

CONNEALY ARMORY  
AMDAHL MISS MAY 905  
Dam AMDAHL MISS LAUREL 056-6108

CONNEALY ARSENAL 2174  
EBBA OF CONANGA 808  
HERBSTER LAUREL 466  
AMDAHL MISS TJ HOMER 3138 056

BW
66
Adj. 205
695
C/E
5

CED	BW	WW	YW	DOC	HP	Milk	CW	MB	RE	\$M	\$C
+11	-0.2	+70	+126	+21	+17.8	+31	+43	+0.45	+0.50	+83	+237

- Highly recommended for heifers.
- Dam is a good uddered Armory daughter.



AMDAHL MISS MAY 905  
DAM OF LOT 49



# ANGUS BULLS

## Lot 50 **AMDAHL FREE STATE 2248**

BD: 10/10/22 Reg No: 20625653 Tattoo: 2248

Sire: RRR FREE STATE R1110

BW	78
Adj. 205	731
C/E	4

AMDAHL RANGE MASTER 830  
 AMDAHL MISS ERICA 0153  
 Dam AMDAHL MISS ERICA 5051-579

HA COWBOY UP 5405  
 AMDAHL MISS BP 380-509  
 BUSHS KODIAK LEAD 754  
 R K MISS FAMOUS ERICA 24

CED	BW	WW	YW	DOC	HP	Milk	CW	MB	RE	\$M	\$C
+7	+2.2	+57	+107	+15	+8.7	+28	+36	+0.54	+0.28	+37	+200

- **FALL BULL**
- Recommended for heifers.
- Great combination of Free State on top of a great Range Master daughter.

## Lot 51 **AMDAHL FREE STATE 3107**

BD: 1/14/23 Reg No: 20774092 Tattoo: 3107

Sire: RRR FREE STATE R1110

BW	81
Adj. 205	676
C/E	3

CONNEALY TREASURE 0369  
 AMDAHL MISS LASS 0173  
 Dam AMDAHL MISS LASS ET 602-744

MGR TREASURE  
 JMC HIPPIE EXEC 0369 45121  
 HERBSTER LAUREL 466  
 AMDAHL LASS OCC LEGEND 602

CED	BW	WW	YW	DOC	HP	Milk	CW	MB	RE	\$M	\$C
+8	+0.6	+79	+139	+13	+16.6	+26	+61	+0.74	+0.78	+86	+284

- Recommended for cows.
- Dam is a long bodied cow with a perfect udder.

## Lot 52 **AMDAHL FREE STATE 3098**

BD: 1/11/23 Reg No: 20768477 Tattoo: 3098

Sire: RRR FREE STATE R1110

BW	76
Adj. 205	700
C/E	4

HA PRIME CUT 4493  
 AMDAHL DIXIE ERICA 994  
 Dam AMDAHL MISS HOMER 172-380

VERMILION SIRLOIN  
 HA MISS BLACKCAP 9127  
 O C C HOMER 650H  
 AMDAHL MISS PP 7155-172

CED	BW	WW	YW	DOC	HP	Milk	CW	MB	RE	\$M	\$C
+11	-1.2	+59	+99	+5	+11.2	+21	+37	+0.35	+0.25	+65	+210

- Recommended for heifers or cows.
- Dam has a great udder and is a maternal sister to Range Master.

## Lot 53 **AMDAHL FREE STATE 3144**

BD: 2/6/23 Reg No: 20772192 Tattoo: 3144

Sire: RRR FREE STATE R1110

BW	79
Adj. 205	677
C/E	4

LD CAPITALIST 316  
 AMDAHL DIXIE 979  
 Dam AMDAHL'S DIXIE 014-369

CONNEALY CAPITALIST 028  
 LD DIXIE ERICA 2053  
 CB BLOCK PARTY 156  
 AMDAHL DIXIE 7402 014

CED	BW	WW	YW	DOC	HP	Milk	CW	MB	RE	\$M	\$C
+8	+1.4	+71	+126	+14	+11.7	+29	+66	+0.52	+0.67	+71	+276

- Highly recommended for heifers.
- 3144 is highly maternal and well muscled bull.
- Dam is moderate with a perfect udder. She sells as Lot 114



DAM OF LOT 53 - SHE SELLS AS LOT 144



MATERNAL BROTHER OF LOT 53

## Lot 54 **AMDAHL FREE STATE 3061**

BD: 12/30/22 Reg No: 20768465 Tattoo: 3061

Sire: RRR FREE STATE R1110

BW	79
Adj. 205	698
C/E	5

CONNEALY ARMYORY  
 AMDAHL MISS ANNIE 961  
 Dam AMDAHL'S MISS B P 176-393

CONNEALY ARSENAL 2174  
 EBBA OF CONANGA 808  
 CB BLOCK PARTY 156  
 AMDAHL MISS LINK 2138-176

CED	BW	WW	YW	DOC	HP	Milk	CW	MB	RE	\$M	\$C
+9	+1.1	+66	+121	+22	+15.5	+24	+48	+0.70	+0.33	+80	+256

- Recommended for heifers or cows.
- Great maternal heifer bull here.

## Lot 55 **AMDAHL FREE STATE 3148**

BD: 2/12/23 Reg No: 20768486 Tattoo: 3148

Sire: RRR FREE STATE R1110

BW	73
Adj. 205	639
C/E	5

AMDAHL'S ROCKETEER 636  
 AMDAHL BLACKBIRD 997  
 Dam D R BLACKBIRD 120

MUSGRAVE AVIATOR  
 AMDAHL ERICA 431-465  
 H A R B WINDY 702 JH  
 D R BLACKBIRD 3779

CED	BW	WW	YW	DOC	HP	Milk	CW	MB	RE	\$M	\$C
+13	-1.4	+56	+98	+21	+14.5	+29	+31	+0.65	+0.56	+82	+242

- Highly recommended for heifers.
- Great combination of maternal power in his pedigree.

# ANGUS BULLS

## Sire



## Spring Cove Mission 201H

BD: 09/28/2020 Reg No: +\*20103153 Tattoo: 201H

Spring Cove Compound 12E  
Sire Spring Cove Liza 507

KM Broken Bow 002  
Spring Cove Pretty 205  
Basin Payweight 1682  
Spring Cove Liza 309

C C A Emblazon 702  
Spring Cove Beauty DVB 206  
Dam Spring Cove Beauty DLB 058

O C C Emblazon 854E  
Limestone Blackcap R128  
SydGen 928 Destination 5420  
Spring Cove Beauty DVB 641

CED	BW	WW	YW	DOC	HP	Milk	CW	MB	RE	\$M	\$C
+14	+0.7	+80	+142	+16	+19.9	+31	+64	+1.13	+0.44	+75	+308

## Lot 56 AMDAHL MISSION 3087

BD: 1/7/23 Reg No: 20768474 Tattoo: 3087

Sire: SPRING COVE MISSION 201H

HTD BOOK

AMDAHL'S ROCKETEER 636  
AMDAHL DIXIE ERICA 1116  
Dam AMDAHL DIXIE ERICA 933-6140

MUSGRAVE AVIATOR  
AMDAHL ERICA 431-465  
SK MR UPDATE 1  
AMDAHL DIXIE ERICA 1188-933

BW
80
Adj. 205
771
C/E
3

CED	BW	WW	YW	DOC	HP	Milk	CW	MB	RE	\$M	\$C
+3	+2.2	+72	+126	+20	+16.6	+33	+61	+0.99	+0.38	+78	+298

### SALE FEATURE

- Recommended for heifers or cows.
- 3087 is very stylish and well made.
- He is out of one of the very best first calf heifers.



56

## Lot 57 AMDAHL MISSION 3035

BD: 12/26/22 Reg No: 20624949 Tattoo: 3035

Sire: SPRING COVE MISSION 201H

HTD BOOK

G A R ASHLAND  
AMDAHL ERICA 1142  
Dam AMDAHL ERICA 431-465

G A R EARLY BIRD  
CHAIR ROCK AMBUSH 1018  
G A R PROPHET  
S A 1117 HOMER 431 228

BW
81
Adj. 205
676
C/E
4

CED	BW	WW	YW	DOC	HP	Milk	CW	MB	RE	\$M	\$C
+9	+2.3	+87	+155	+18	+17.6	+24	+63	+1.17	+0.37	+69	+300

- Recommended for larger framed heifers and cows.
- 3035 is a big time performance bull with great carcass merit.
- He is out of the owned Spring Cove Mission sire.

## Lot 58 AMDAHL MISSION 3146

BD: 2/10/23 Reg No: 20768485 Tattoo: 3146

Sire: SPRING COVE MISSION 201H

HTD BOOK

AMDAHL PRIME BEEF 9100  
AMDAHL MISS ERICA 1017  
Dam AMDAHL MISS BLOCK 778-378

HA PRIME CUT 4493  
AMDAHL NIGHTWATCH 821 026  
CB BLOCK PARTY 156  
S A 48 HUNTER 778 506

BW
78
Adj. 205
788
C/E
4

CED	BW	WW	YW	DOC	HP	Milk	CW	MB	RE	\$M	\$C
+7	+2.1	+70	+125	+12	+12.1	+25	+62	+0.79	+0.60	+62	+280

- Recommended for heifers or cows.
- Big spread heifer bull here.
- Out of one of my favorite Prime Beef daughters.

## Lot 59 AMDAHL MISSION 3143

BD: 2/4/23 Reg No: 20768484 Tattoo: 3143

Sire: SPRING COVE MISSION 201H

HTD BOOK

BUBS SOUTHERN CHARM AA31  
AMDAHL MISS BLACKBIRD 1018  
Dam AMDAHL MISS HEAVY 581-726

SILVEIRAS CONVERSION 8064  
HICKORY HILL ERICA 009  
AMDAHL'S HEAVY DUTY 323  
AMDAHL JD MISS BP 026-581

BW
79
Adj. 205
736
C/E
4

CED	BW	WW	YW	DOC	HP	Milk	CW	MB	RE	\$M	\$C
+5	+2.8	+81	+143	+19	+17.0	+20	+54	+0.59	+0.52	+59	+248

- Highly recommended for heifers.
- 3143 is a very well balanced heifer bull.
- His dam is a well made and feminine Southern Charm daughter.



MATERNAL BROTHER OF LOT 57



## Sire



## TOST Load Limit 023H

BD: 09/06/2020 Reg No: \*20097916 Tattoo: 023H

Basin Payweight 1682  
**TR Mr Payweight 7115E**  
 Sire TR MS Lass 4124B

Basin Payweight 0065  
 21AR O Lass 7017  
 BCC Jaf Upward 15X  
 TR Ms Lass 9073W

MW Predominant 391  
**Eb Elaine Elba N193**  
 Dam Eb Ult Design Lass N193

S A V 004 Predominant 4438  
 MW Queen Shannon 703  
 CW 416 Ultimate Design 58  
 Alliance 6595 Lass MB 4F36

CED	BW	WW	YW	DOC	HP	Milk	CW	MB	RE	\$M	\$C
+5	+2.5	+72	+127	+16	+11.0	+17	+50	+0.13	+0.12	+46	+185

## Lot 60 AMDAHL LOAD LIMIT 3037

BD: 12/26/22 Reg No: 20768455 Tattoo: 3037

Sire: TOST LOAD LIMIT 023H

HA COWBOY UP 5405  
**AMDAHL ERICA ET 50-7108**  
 Dam P A R EMBLAZON 50

HA OUTSIDE 3008  
 HA BLACKCAP LADY 1602  
 O C C EMBLAZON 854E  
 P A R HEAVY DRIVE 478

BW
84
Adj. 205
779
C/E
1

CED	BW	WW	YW	DOC	HP	Milk	CW	MB	RE	\$M	\$C
+3	+2.6	+72	+126	+23	+5.8	+16	+42	-0.04	+0.20	+38	+148

- Recommended for cows.
- 3037 is a good footed and long bodied bull with herd bull look.
- Dam WR 5 at 101.
- Out of the great Erica cow family.



MATERNAL BROTHER OF LOT 60

## Lot 61 AMDAHL LOAD LIMIT 3109

BD: 1/18/23 Reg No: 20768479 Tattoo: 3109

Sire: TOST LOAD LIMIT 023H

O C C X-TRA EASY 708X  
**AMDAHL ANNIE 5109-752**  
 Dam AMDAHL JD ANNIE294-5109

O C C NO PROBLEMS 52N  
 O C C DIXIE ERICA 678T  
 VIN-MAR CONSENSUS 2616  
 AMDAHL JD ANNIE 208

CED	BW	WW	YW	DOC	HP	Milk	CW	MB	RE	\$M	\$C
+10	+0.5	+64	+112	+9	+7.8	+23	+38	+0.47	+0.04	+66	+201

- Recommended for larger framed heifers or cows.
- 3109 has had true herd bull look from the beginning and will surely catch your eye in the pen.
- His maternal heifer is currently owned by Ostrand Angus.



61

## Lot 62 AMDAHL LOAD LIMIT 3102

BD: 1/13/23 Reg No: 20768478 Tattoo: 3102

Sire: TOST LOAD LIMIT 023H

AMDAHL'S HEAVY DUTY 323  
**AMDAHL MISS HEAVY DUTY72-520**  
 Dam PAR TRAVELING WESTWIND 72

W H S LIMELIGHT 64V  
 D R BLACKBIRD 133  
 G A R TRAVELER 1489  
 P A R TRAVELING WESTWIND D30

BW
83
Adj. 205
746
C/E
2

CED	BW	WW	YW	DOC	HP	Milk	CW	MB	RE	\$M	\$C
+8	+0.6	+61	+102	+16	+7.1	+22	+30	+0.54	+0.25	+58	+194

- Recommended for cows.
- Dam WR 6 at 102.
- 3102 has great herd bull look with depth of body.

## Lot 63 AMDAHL LOAD LIMIT 3049

BD: 12/28/22 Reg No: 20768459 Tattoo: 3049

Sire: TOST LOAD LIMIT 023H

HERBSTER LAUREL 466  
**AMDAHL MISS LASS ET 602-744**  
 Dam AMDAHL LASS OCC LEGEND 602

S A V MERIT 0616  
 LIMESTONE MAY 8195  
 O C C LEGEND 616L  
 P A R AMBUSH LASSIE 1DA

CED	BW	WW	YW	DOC	HP	Milk	CW	MB	RE	\$M	\$C
+11	+1.0	+58	+110	+21	+11.7	+23	+31	+0.20	+0.14	+49	+162

- Recommended for cows.
- 3049 is a big and rugged Black River son.
- Keep all the daughters.
- Dam WR 5 at 104.

# ANGUS BULLS

## Sire



## Sitz Resilient 10208

BD: 2/15/2018 Reg No: \*19057457 Tattoo: 10208

Sitz Stellar 726D  
Sire Mohnen Substantial 272  
SITZ Pride 200B

Benfield Substance 8506  
Mohnen Glyn Mawr Elba 1758  
Connealy Final Product  
Sitz Pride 308Y

Sitz Miss Burgess 1856  
Dam Sitz Top Game 561X  
Sitz Miss Burgess 4381

GDAR Game Day 449  
Sitz Pride 88T  
Sitz Rainmaker 10899  
Sitz Miss Burgess 1609

CED	BW	WW	YW	DOC	HP	Milk	CW	MB	RE	\$M	\$C
+7	+0.5	+77	+133	+5	+17.2	+24	+44	+0.85	+0.70	+90	+275

## Lot 64 AMDAHL RESILIENT 2238

BD: 8/4/22 Reg No: 20625647 Tattoo: 2238

Sire: SITZ RESILIENT 10208

AMDAHL RANGE MASTER 830  
AMDAHL ERICA 0200  
Dam AMDAHL ERICA 431-465

HA COWBOY UP 5405  
AMDAHL MISS BP 380-509  
G A R PROPHET  
S A 1117 HOMER 431 228

BW	78
Adj. 205	658
C/E	4

CED	BW	WW	YW	DOC	HP	Milk	CW	MB	RE	\$M	\$C
+6	+0.9	+64	+116	-3	+9.4	+31	+38	+1.08	+0.34	+51	+243

- FALL BULL
- Recommended for heifers.
- 2238 offers great marbling backed by one of the best cows in our program, Amdahl Erica 0200.



64



AMDAHL ERICA 0200  
DAM OF LOT 64

## Lot 65 AMDAHL RESILIENT 2230

BD: 8/2/22 Reg No: 20625640 Tattoo: 2230

Sire: SITZ RESILIENT 10208

AMDAHL DIXIE 0204  
Dam G A R PHOENIX  
AMDAHL DIXIE 8157

G A R SURE FIRE  
G A R PROPHET N744  
AMDAHL'S ALL AMERICAN 324  
PAR HOMER'S PAXTON 343

BW	67
Adj. 205	698
C/E	5

CED	BW	WW	YW	DOC	HP	Milk	CW	MB	RE	\$M	\$C
+3	+1.4	+75	+126	+8	+10.9	+21	+51	+0.80	+0.59	+66	+258

- FALL BULL
- Highly recommended for heifers.
- 2230 is a good footed and maternal bull.

## Lot 66 AMDAHL RESILIENT 2234

BD: 8/2/22 Reg No: 20625644 Tattoo: 2234

Sire: SITZ RESILIENT 10208

AMDAHL LANDMARK 712  
AMDAHL MISS PROMISE 0202  
Dam AMDAHL MISS PROMISE 929

AMDAHL'S BLOCK PARTY 557  
AMDAHL MISS ULTIMATE747W-103  
G A R PHOENIX  
AMDAHL'S PROMISE 716-736

BW	68
Adj. 205	660
C/E	5

CED	BW	WW	YW	DOC	HP	Milk	CW	MB	RE	\$M	\$C
+10	-0.5	+64	+105	-1	+13.0	+27	+29	+0.69	+0.41	+72	+221

- FALL BULL
- Highly recommended for heifers.
- Offers a great pedigree for making good mama cows.





# ANGUS BULLS

## Sire



## Amdahl Flagstone 1037

BD: 01/07/2021

Reg No: \*20103265

Tattoo: 1037

Hoover No Doubt  
**Baldrige Flagstone F411**  
 Sire Baldrige Isabel Y69

Mogck Bullseye  
 Miss Blackcap Ellston J2  
 Styles Upgrade J59  
 Baldrige Isabel T935

Amdahl's Heavy Duty 323  
**Amdahl Queen Dolly 418-707**  
 Dam Amdahl Miss Consensus 72-418

W H S Limelight 64V  
 D R Blackbird 133  
 Schelskes Consensus 2327A  
 PAR Traveling Westwind 72

CED	BW	WW	YW	DOC	HP	Milk	CW	MB	RE	\$M	\$C
+8	+1.0	+66	+121	+32	+8.6	+29	+62	+0.96	+0.66	+70	+311

### Lot 67 AMDAHL FLAGSTONE 304L

BD: 2/1/23

Reg No: 20744946

Tattoo: 304L

Sire: AMDAHL FLAGSTONE 1037

BUSHS CONSENSUS 411  
**SK MISS CONSENSUS ERICA 1**  
 Dam RK MISS BANDO ERICA 9A

CONNEALY CONSENSUS 7229  
 BUSHS MISS DATELINE 480  
 CARLSON 5175 BANDO 311  
 R K MISS FORTUNE ERICA 8

BW
74
Adj. 205
639
C/E
4

CED	BW	WW	YW	DOC	HP	Milk	CW	MB	RE	\$M	\$C
+9	-0.3	+51	+88	+24	+9.7	+26	+29	+0.75	+0.49	+68	+243

- Recommended for heifers
- This is a stand out 1037 son that has great feet and thickness.

### Lot 68 AMDAHL FLAGSTONE 306L

BD: 2/7/23

Reg No: 20744947

Tattoo: 306L

Sire: AMDAHL FLAGSTONE 1037

BVC AVIATOR 4003  
**BROST MISS AVIATOR 283-8148**  
 Dam PAR PREDESTINED LINK 283

MUSGRAVE AVIATOR  
 BVC LUCY TH 263  
 AKERS MISSING LINK 9603  
 P A R PREDESTINED BESSIE 128

BW
81
Adj. 205
724
C/E
3

CED	BW	WW	YW	DOC	HP	Milk	CW	MB	RE	\$M	\$C
+4	+1.8	+66	+116	+25	+9.6	+24	+45	+0.65	+0.68	+71	+273

- Strong and maternal 1037 son.

## Greetings Cattle Producers,

A privilege and honor it is to work with the Amdahl family in promoting their life's work and passion to the public. As it relates to the people side of business the Amdahl family makes for easy representation with God centered values. Honest and accurate dealings will be the only option for you the customer. There is nothing more exciting and rewarding to our CK6 team than to watch a young family leap headfirst into the seedstock business with no fear and a clear direction. JD has a vision of a consistent genetic product and is steadfast in his approach to deliver that promise to the public. Part of that plan involves the dispersal of the Hereford program that has been so good to them over the years. This will allow for a intense focus on an Angus herd built for Western SD with genetic merit to go anywhere in the country. Amdahl Angus will be one to be watched as there are few in the business with so much longevity potential and a disciplined breeding approach to hold true to a customer's exact needs.

The cattle market in a ticking time bomb as you look to replacement females. We are so thankful for the rewards received on the feeder calf side and know that it's a matter of time for a female market to catch fire. Our advise is to be on the front side of this replacement female boom. The dire shortage of cattle is still pushing females into the yards at unseen levels to this day. It may be another full year before heifers are keep back in many parts of the country. We do know that many herds will not rebuild, and some are calling it a last calf crop because of age and lack of help. This can only mean that those with the will to raise them could be in a spot never dreamed of before. Take advantage if you have the grass to hold them and don't look back a year from now saying we should have.

*God Bless, Chris Earl, Wes Tiemann, Kody Fleeman, & Amanda Radtke*



Chris Earl 630-675-6559  
 Wes Tiemann 816-244-4462



## Sire



## Baldrige Mountaineer

BD: 01/26/2021 Reg No: +\*20046723 Tattoo: J153

Sire **Mill Brae Identified 4031**  
 Koupals B&B Identity  
 Mill Brae Pro Blackcap 1092

Sitz Upward 307R  
 B&B Erica 605  
 GAR-EGL Protege  
 Mill Brae FL Blackcap 5002

Dam **Baldrige Isabel E030**  
 Connealy Confidence Plus  
 Baldrige Isabel Y69

Connealy Confidence 0100  
 Elbanna of Conanga 1209  
 Styles Upgrade J59  
 Baldrige Isabel T935

CED	BW	WW	YW	DOC	HP	Milk	CW	MB	RE	\$M	\$C
+13	-2.1	+69	+127	+25	+11.1	+26	+52	+1.23	+1.28	+85	+334

### Lot 69 AMDAHL MOUNTAINEER 3067

BD: 12/31/22 Reg No: 20768467 Tattoo: 3067

Sire: BALDRIGE MOUNTAINEER

Dam **AMDAHL QUEEN DOLLY 1144**  
 GMAR RESOURCE F373  
 AMDAHLS REMARKABULL 5134

S A V RESOURCE 1441  
 GMAR FOUNDATION B146  
 O C C REMARKABULL 937R  
 PAR MITCHELL'S LINK 303

BW
73
Adj. 205
736
C/E
4

CED	BW	WW	YW	DOC	HP	Milk	CW	MB	RE	\$M	\$C
+6	+0.5	+71	+128	+24	+12.1	+29	+48	+0.46	+1.00	+74	+258

- Recommended for heifers or cows.
- Dam is a moderate and thick Resource daughter.
- Will make excellent females.

### Lot 70 AMDAHL MOUNTAINEER 3090

BD: 1/7/23 Reg No: 20768476 Tattoo: 3090

Sire: BALDRIGE MOUNTAINEER

Dam **AMDAHL QUEEN 1053**  
 AMDAHL PRIME BEEF 9100  
 AMDAHL QUEEN 709-404

HA PRIME CUT 4493  
 AMDAHL NIGHTWATCH 821 026  
 G A R PROPHET  
 AMDAHL HOMER QUEEN 531-709

BW
78
Adj. 205
655
C/E
4

CED	BW	WW	YW	DOC	HP	Milk	CW	MB	RE	\$M	\$C
+10	-0.2	+56	+115	+31	+10.4	+25	+37	+1.03	+0.88	+63	+278

- Recommended for heifers or cows.
- Dam is a Prime Beef daughter that is long bodied and good uddered.

### Lot 71 AMDAHL MOUNTAINEER 3092

BD: 1/8/23 Reg No: 20768491 Tattoo: 3092

Sire: BALDRIGE MOUNTAINEER

Dam **AMDAHL ERICA HICKOK 1092**  
 AMDAHL'S ULTIMATE 802  
 AMDAHL DIXIE ERICA 544-9156

O C C LINEBRED 661L  
 P A R ERIKA'S TRAVELER 52  
 3F EPIC 4631  
 AMDAHL ERICA HICKOK 104-544

BW
65
Adj. 205
574
C/E
5

CED	BW	WW	YW	DOC	HP	Milk	CW	MB	RE	\$M	\$C
+18	-3.1	+53	+98	+13	+8.5	+15	+26	+0.73	+0.64	+46	+209

- Highly recommended for heifers.
- 3092 is a moderate and deep bodied bull.

View Sale Videos here



Amdahl Yeti 810 with his dam at pre-weaning. Pounds at weaning time are pivotable for profitability.



# HEREFORD BULLS



Lot **72** **PYRAMID HIGHLAND 1403**  
 BD: 3/31/21 Reg No: 44360107 Tattoo: 1403

Sire: S16 782B HIGHLAND 84E

CHURCHILL PILGRIM 632D ET  
 FHF 632D POLLY 130F  
 Dam FHF 9116 POLLY 118A

NJW 73S W18 HOMETOWN 10Y ET  
 CHURCHILL LADY 002X ET  
 PYRAMID 16W 110T 9116  
 FHF 110T POLLY 13W

BW
82
Adj. 205
740
C/E
4

CED	BW	WW	YW	Milk	M&G	SC	REA	Marb	CHB
+9.8	+1.6	+63	+98	+27	+58	+1.3	+0.55	+0.10	+133

- **SALE FEATURE**
- Recommended for heifers.
- Highland 1403 is a top end heifer bull that has checked all the boxed for feet, performance and vigor.
- He definitely can get after it during breeding season as he bred 45 females in the 2023 breeding season.

## Sire

## PYRAMID HISTORIC 0156 ET

BD: 2/12/2020 Reg No: 44180027 Tattoo: 0156

CHURCHILL SENSATION 028X  
 Sire NJW 160B 028X HISTORIC 81E ET  
 NJW 73S 38W DAYDREAM 160B

UPS DOMINO 3027  
 CHURCHILL LADY 7202T ET  
 NJW 76S P20 BEEF 38W ET  
 NJW P606 72N DAYDREAM 73S

GOLDEN-OAK 4J MAXIUM 28M  
 Dam FHF 28M RITA 105Z  
 FHF 408 RITA 21W

EAGLE-RIDGE BLASTER ET 4J  
 TA-BAR CHANTELE 15K  
 CJH HARLAND 408  
 FHF 45P RITA 101T

CED	BW	WW	YW	Milk	M&G	SC	REA	Marb	CHB
+8.1	-0.5	+53	+80	+30	+57	+0.7	+0.66	+0.10	+130

Lot **73** **TA HISTORIC 329**  
 BD: 1/4/23 Reg No: 44497005 Tattoo: 329

Sire: PYRAMID HISTORIC 0156 ET

KB L1 DOMINO 623D 1ET  
 TA L1 DOMINETTE 917G  
 Dam TA L1 DOMINETTE 750E

CL 1 DOMINO 215Z  
 HH MISS ADVANCE 1072Y ET  
 KB L1 DOMINO 406B  
 MONTANA MISS TA 518C

BW
86
Adj. 205
760
C/E
2

CED	BW	WW	YW	Milk	M&G	SC	REA	Marb	CHB
+4.7	+2.1	+58	+90	+30	+58	+0.9	+0.55	+0.13	+124

- **SALE FEATURE**
- Recommended for cows.
- Polled
- 329 is one of the top weaning weight bulls in the Hereford offering.
- Couldn't ask for a better pedigree to make exceptional females.

Lot **74** **TA HISTORIC 317**

BD: 12/26/22 Reg No: 44496681 Tattoo: 317

Sire: PYRAMID HISTORIC 0156 ET

BEHM 100W CUDA 504C  
 TA MISS DOMINETTE 0352H  
 Dam MONTANA MISS 326A

NJW 73S M326 TRUST 100W ET  
 BEHM R294 JASMAN102Y  
 HH ADVANCE 1207Y  
 MONTANA MISS 108Y

BW
68
Adj. 205
690
C/E
5

CED	BW	WW	YW	Milk	M&G	SC	REA	Marb	CHB
+12.1	-0.9	+50	+77	+30	+55	+0.8	+0.53	+0.23	+129

- Highly recommended for heifers.
- Polled
- One of the very top heifer bulls in the offering.
- 317 has great look and style.



# HEREFORD BULLS

**Lot 75** **TA HISTORIC 302**  
 BD: 12/16/22 Reg No: 44496661 Tattoo: 302

Sire: PYRAMID HISTORIC 0156 ET

KB L1 DOMINO 337A  
 TA L1 DOMINETTE 526C  
 Dam KB L1 DOMINETTE 344 A

KB L1 DOMINO 0186X  
 KB T1 DOMINETTE 195Y  
 KB L1 DOMINO 121Y  
 KB L1 DOMINETTE 2109

BW	75
Adj. 205	770
C/E	5

CED	BW	WW	YW	Milk	M&G	SC	REA	Marb	CHB
+10.8	-0.6	+45	+67	+26	+49	+0.6	+0.48	+0.12	+111

- Highly recommend for heifers.
- Polled
- Top 1% for CE
- Dam has a great udder.

**Lot 76** **TA HISTORIC 304**  
 BD: 12/16/22 Reg No: 44496663 Tattoo: 304

Sire: PYRAMID HISTORIC 0156 ET

CL 1 DOMINO 592R 1ET  
 KB L1 DOMINETTE 1117Y  
 Dam KB L1 DOMINETTE 505R

CL 1 DOMINO 9126J 1ET  
 CL 1 DOMINETTE 974J  
 KB L1 DOMINO 737  
 KB L1 DOMINETTE 1106

BW	72
Adj. 205	642
C/E	4

CED	BW	WW	YW	Milk	M&G	SC	REA	Marb	CHB
+7.5	-0.1	+38	+63	+22	+41	+0.6	+0.45	+0.17	+123

- Recommended for heifers.
- Polled
- Long bodied Historic son.

**Lot 77** **TA HISTORIC 306**  
 BD: 12/18/22 Reg No: 44496665 Tattoo: 306

Sire: PYRAMID HISTORIC 0156 ET

CL 1 DOMINO 269Z 1ET  
 TA L1 DOMINETTE 888F  
 Dam MONTANA MISS TA 518C

CL 1 DOMINO 860U  
 CL 1 DOMINETTE 759T 1ET  
 CL 1 DOMINO 2215Z 1ET  
 MONTANA MISS 208Z

BW	80
Adj. 205	760
C/E	3

CED	BW	WW	YW	Milk	M&G	SC	REA	Marb	CHB
+3.1	+1.9	+57	+94	+28	+57	+1.0	+0.54	+0.04	+112

- Recommended for cows.
- Polled
- Exciting combination of 269 and Historic 0156 in his pedigree.
- He will make great females.



**Lot 78** **TA HISTORIC 313**  
 BD: 12/22/22 Reg No: 44497033 Tattoo: 313

Sire: PYRAMID HISTORIC 0156 ET

KB L1 DOMINO 5104B  
 TA MISS 124J  
 Dam MONTANA MISS TA 522C

HH ADVANCE 1207Y  
 MONTANA MISS 740T  
 CL 1 DOMINO 2121Z  
 MONTANA MISS 137Y

BW	82
Adj. 205	700
C/E	3

CED	BW	WW	YW	Milk	M&G	SC	REA	Marb	CHB
+2.9	+2.9	+58	+90	+26	+55	+0.8	+0.54	+0.08	+118

- Recommended for cows.
- Polled
- Exciting mating with 5104 and 0156.
- 313 will certainly make top of the line females.
- He earned a weaning ratio of 105.

**Lot 79** **TA HISTORIC 315**  
 BD: 12/25/22 Reg No: 44496678 Tattoo: 315

Sire: PYRAMID HISTORIC 0156 ET

KB L1 DOMINO 5104B  
 TA L1 DOMINETTE 102J  
 Dam TA L1 DOMINETTE 750E

HH ADVANCE 1207Y  
 MONTANA MISS 740T  
 KB L1 DOMINO 406B  
 MONTANA MISS TA 518C

BW	75
Adj. 205	668
C/E	3

CED	BW	WW	YW	Milk	M&G	SC	REA	Marb	CHB
+5.1	+1.3	+51	+79	+27	+53	+0.8	+0.48	+0.10	+116

- Recommended for heifers or cows.
- Polled
- Dam is a great uddered 5104 daughter.

**Lot 80** **TA HISTORIC 322**  
 BD: 12/31/22 Reg No: 44496690 Tattoo: 322

Sire: PYRAMID HISTORIC 0156 ET

KB L1 DOMINO 6152  
 KB L1 DOMINETTE 267 Z  
 Dam KB L1 DOMINETTE 633

KB L1 DOMINO 218  
 L1 DOMINETTE 4136P  
 CL 1 DOMINO 180L  
 KB AMY 1158

BW	81
Adj. 205	724
C/E	3

CED	BW	WW	YW	Milk	M&G	SC	REA	Marb	CHB
+1.7	+1.8	+49	+79	+25	+49	+0.8	+0.51	-0.01	+108

- Recommended for cows.
- Polled
- Great color pattern on this Historic son.
- 322's dam is a highly proven 11 year old cow.

**Lot 81** **TA HISTORIC 325**  
 BD: 1/3/23 Reg No: 44496998 Tattoo: 325

Sire: PYRAMID HISTORIC 0156 ET

KB L1 DOMINO 5104B  
 TA L1 DOMINETTE 122J  
 Dam TA L1 DOMINETTE 833F

HH ADVANCE 1207Y  
 MONTANA MISS 740T  
 KB L1 DOMINO 504C ET  
 MONTANA MISS 207 Z

BW	75
Adj. 205	582
C/E	3

CED	BW	WW	YW	Milk	M&G	SC	REA	Marb	CHB
+5.2	+1.2	+48	+76	+27	+51	+0.8	+0.49	+0.10	+118

- Recommended for heifers or cows.
- Polled
- Really like the young female behind this bull, she has a bright future.



# HEREFORD BULLS

Lot  
**82**

## TA HISTORIC 326

BD: 1/4/23 Reg No: 44497003 Tattoo: 326

Sire: PYRAMID HISTORIC 0156 ET

BCC UPROAR 946G  
TA DOMINETTE 144J  
Dam TA LT DOMINETTE 729E

HAROLDSON'S UPGRADE T100 33D  
BCC SCARLET 403B  
KB LT DOMINO 406B  
TA LT DOMINETTE 516C

BW
76
Adj. 205
628
C/E
3

CED	BW	WW	YW	Milk	M&G	SC	REA	Marb	CHB
+3.7	+2.1	+56	+90	+27	+55	+0.8	+0.67	+0.05	+118

- Recommended for heifers or cows.
- Polled
- He is out of one of the very best 2021 females.



DAM OF LOT 82 - SHE SELLS AS LOT 166

Lot  
**83**

## TA HISTORIC 333

BD: 1/6/23 Reg No: 44497010 Tattoo: 333

Sire: PYRAMID HISTORIC 0156 ET

UPS SENSATION 2504 ET  
TA DOMINETTE 0346H  
Dam TA LT DOMINETTE 833F

CHURCHILL SENSATION 028X  
NJW BW LADYSPORT DEW 78P ET  
KB LT DOMINO 504C ET  
MONTANA MISS 207 Z

BW
73
Adj. 205
658
C/E
4

CED	BW	WW	YW	Milk	M&G	SC	REA	Marb	CHB
+7.9	-0.4	+47	+77	+32	+55	+0.9	+0.60	+0.09	+120

- Recommended for heifers.
- Polled
- His dam is one of the favorites from 2020.

Lot  
**84**

## TA HISTORIC 334

BD: 1/6/23 Reg No: 44497011 Tattoo: 334

Sire: PYRAMID HISTORIC 0156 ET

HH ADVANCE 1207Y  
MONTANA MISS 3133 A  
Dam MONTANA MISS 119Y

HH ADVANCE 7034T ET  
HH MISS ADVANCE 6054S  
CL 1 DOMINO 849U  
MONTANA MISS 973W

BW
79
Adj. 205
732
C/E
4

CED	BW	WW	YW	Milk	M&G	SC	REA	Marb	CHB
+7.2	+1.4	+54	+81	+27	+54	+1.0	+0.46	+0.09	+112

- Recommended for heifers or cows.
- Scurred
- 334 earned a weaning ratio of 103.

Lot  
**85**

## TA HISTORIC 335

BD: 1/8/23 Reg No: 44497013 Tattoo: 335

Sire: PYRAMID HISTORIC 0156 ET

KB LT DOMINO 5104B  
TA LT DOMINETTE 114J  
Dam KB LT DOMINETTE 1117Y

HH ADVANCE 1207Y  
MONTANA MISS 740T  
CL 1 DOMINO 592R 1ET  
KB LT DOMINETTE 505R

BW
80
Adj. 205
580
C/E
3

CED	BW	WW	YW	Milk	M&G	SC	REA	Marb	CHB
+5.1	+1.5	+45	+72	+24	+46	+0.7	+0.45	+0.10	+117

- Recommended for cows.
- Polled
- Two of the most consistent sires we have ever used are in his pedigree - 5104 and Historic 0156.

Lot  
**86**

## TA HISTORIC 338

BD: 1/11/23 Reg No: 44497016 Tattoo: 338

Sire: PYRAMID HISTORIC 0156 ET

BCC UPROAR 946G  
TA DOMINETTE 132J  
Dam TA LT DOMINETTE 867F

HAROLDSON'S UPGRADE T100 33D  
BCC SCARLET 403B  
CL 1 DOMINO 269Z 1ET  
KB LT DOMINETTE 3159 A

BW
72
Adj. 205
660
C/E
3

CED	BW	WW	YW	Milk	M&G	SC	REA	Marb	CHB
+5.0	+1.0	+55	+87	+26	+53	+0.8	+0.67	+0.08	+118

- Recommended for heifers.
- Polled
- 338 offers great look and style.
- His dam is a top tiered Uproar daughter.

Lot  
**87**

## TA HISTORIC 342

BD: 1/17/23 Reg No: 44497022 Tattoo: 342

Sire: PYRAMID HISTORIC 0156 ET

EFBEEF X651 TESTED A250  
TA DOMINETTE 0322H  
Dam TA LT DOMINETTE 849F

EFBEEF TFL U208 TESTED X651 ET  
EFBEEF 6378 KATE W484  
KB LT DOMINO 504C ET  
TA LT DOMINETTE 650D

BW
78
Adj. 205
672
C/E
4

CED	BW	WW	YW	Milk	M&G	SC	REA	Marb	CHB
+6.4	+1.0	+56	+85	+30	+58	+1.0	+0.55	+0.26	+130

- Recommended for heifers or cows.
- Horned
- Dam is a moderate, easy fleshing and dark in color Tested daughter.
- 342 has great weaning weight performance.



View Sale Videos here

# HEREFORD BULLS

Lot **88** **TA HISTORIC 345**  
 BD: 1/21/23 Reg No: 44497024 Tattoo: 345

Sire: PYRAMID HISTORIC 0156 ET

CL 1 DOMINO 386A 1ET  
 TA L1 DOMINETTE 709E  
 Dam KB L1 DOMINETTE 1146Y

CL 1 DOMINO 1108Y 1ET  
 CL 1 DOMINETTE 440P 1ET  
 CL 1 DOMINO 862U  
 KB L1 DOMINETTE 654

BW
80
Adj. 205
646
C/E
4

CED	BW	WW	YW	Milk	M&G	SC	REA	Marb	CHB
+6.5	+0.2	+47	+72	+27	+51	+0.8	+0.51	+0.19	+125

- Recommended for heifers or cows.
- Horned
- 345 is backed by one of the very best females in the program, TA L1 • Dominette 709E.

Lot **89** **TA HISTORIC 346**  
 BD: 1/22/23 Reg No: 44497075 Tattoo: 346

Sire: PYRAMID HISTORIC 0156 ET

KB L1 DOMINO 5104B  
 TA L1 DOMINETTE 0305H  
 Dam TA L1 DOMINETTE 709E

HH ADVANCE 1207Y  
 MONTANA MISS 740T  
 CL 1 DOMINO 386A 1ET  
 KB L1 DOMINETTE 1146Y

BW
78
Adj. 205
718
C/E
4

CED	BW	WW	YW	Milk	M&G	SC	REA	Marb	CHB
+6.5	+0.5	+51	+77	+27	+53	+0.9	+0.54	+0.14	+122

- Recommended for heifers or cows.
- Horned
- This end of January Historic son offers great style and moves with ease.
- His dam 0305 has always been a stand out female that catches the eye of those who visit.
- Great weaning weight performance here.

## Sire



## BCC UPROAR 946G

BD: 2/18/2019 Reg No: 44054179 Tattoo: 946

SHF TAHOE R117 T100  
**HAROLDSON'S UPGRADE T100 33D**  
 Sire MOHICAN MISSEY 93W

SHF RIB EYE M326 R117  
 SHF LADY 512 L73  
 MOHICAN RANGELAND 221R  
 MOHICAN MISSEY 401R ET

NJW 735 W18 HOMETOWN 10Y ET  
**BCC SCARLET 403B**  
 Dam BCC DARLA 202Z

SHF WONDER M326 W18 ET  
 NJW P606 72N DAYDREAM 73S  
 THM DURANGO 4037  
 BCC MARIA 836

CED	BW	WW	YW	Milk	M&G	SC	REA	Marb	CHB
+11.5	-0.8	+55	+83	+24	+52	+1.3	+0.62	+0.15	+125



Lot **90** **TA HISTORIC 320**  
 BD: 12/30/22 Reg No: 44496687 Tattoo: 320

Sire: PYRAMID HISTORIC 0156 ET

CL 1 DOMINO 269Z 1ET  
 TA L1 DOMINETTE 755E  
 Dam KB L1 DOMINETTE 278Z

CL 1 DOMINO 860U  
 CL 1 DOMINETTE 759T 1ET  
 KB L1 DOMINO 615Z  
 KB L1 DOMINETTE 601

BW
81
Adj. 205
792
C/E
3

CED	BW	WW	YW	Milk	M&G	SC	REA	Marb	CHB
+5.0	+0.7	+50	+82	+27	+52	+0.8	+0.58	-0.02	+106

- Recommended for cows.
- Polled
- He earned a weaning ratio of 107.
- His dam is a long bodied 269 daughter with a great udder.

Lot **91** **TA UPROAR 309**  
 BD: 12/20/22 Reg No: 44496670 Tattoo: 309

Sire: BCC UPROAR 946G

KB L1 DOMINO 337A  
 TA L1 DOMINETTE 526C  
 Dam KB L1 DOMINETTE 344 A

KB L1 DOMINO 0186X  
 KB 11 DOMINETTE 195Y  
 KB L1 DOMINO 121Y  
 KB L1 DOMINETTE 2109

BW
85
Adj. 205
770
C/E
1

CED	BW	WW	YW	Milk	M&G	SC	REA	Marb	CHB
-3.0	+4.1	+56	+94	+20	+48	+1.1	+0.49	+0.07	+115

- **SALE FEATURE**
- Recommended for cows.
- Horned
- Big time herd bull prospect here.
- 309 is a deep ribbed and easy traveling Uproar son.





# HEREFORD BULLS



Lot **92** **TA UPROAR 340**  
 BD: 1/13/23 Reg No: 44497020 Tattoo: 340

Sire: **BCC UPROAR 946G**

— KB L1 DOMINO 623D 1ET  
 TA L1 DOMINETTE 942G  
 Dam — KB L1 DOMINETTE 803U

CL 1 DOMINO 215Z  
 HH MISS ADVANCE 1072Y ET  
 JA L1 DOMINO 6002S  
 KB L1 DOMINETTE 622

BW
83
Adj. 205
746
C/E
1

CED	BW	WW	YW	Milk	M&G	SC	REA	Marb	CHB
+0.1	+2.9	+57	+91	+23	+52	+1.0	+0.49	+0.14	+122

- Recommended for cows.
- Horned
- Can't emphasize enough the cow power behind this young herd bull prospect.
- 340 is one of the top weaning weight bulls in the offering.



DAM OF LOT 93 - SHE SELLS AS LOT 171

Lot **94** **TA UPROAR 253**  
 BD: 8/11/22 Reg No: 44495836 Tattoo: 253

Sire: **BCC UPROAR 946G**

— CL 1 DOMINO 6104D  
 TA L1 DOMINETTE 0102H ET  
 Dam — KB L1 DOMINETTE 376 A

CL 1 DOMINO 4168B 1ET  
 CL 1 DOMINETTE 362A  
 HH ADVANCE 1207Y  
 KB L1 DOMINETTE 167Y

BW
74
Adj. 205
644
C/E
3

CED	BW	WW	YW	Milk	M&G	SC	REA	Marb	CHB
+1.1	+2.8	+56	+95	+28	+56	+1.0	+0.52	+0.10	+121

- **FALL BULL**
- Recommended for cows.
- Polled
- 253 is backed by some of the best females in the program.
- Great pigment on this guy.
- He earned a weaning ratio of 109.



Lot **95** **TA UPROAR 250**  
 BD: 8/7/22 Reg No: 44495630 Tattoo: 250

Sire: **BCC UPROAR 946G**

— HH ADVANCE 6009D ET  
 TA L1 DOMINETTE 903G  
 Dam — TA L1 DOMINETTE 630D

HH ADVANCE 4105B ET  
 HH MISS ADVANCE 1175Y ET  
 CL 1 DOMINO 2121Z  
 MONTANA MISS 3133 A

BW
79
Adj. 205
590
C/E
3

CED	BW	WW	YW	Milk	M&G	SC	REA	Marb	CHB
+1.0	+2.9	+54	+92	+23	+50	+1.1	+0.48	+0.08	+114

- **FALL BULL**
- Recommended for cows.
- Polled
- Dam is a perfect uddered 6009 daughter.

Lot **96** **TA UPROAR 254**  
 BD: 8/22/22 Reg No: 44495841 Tattoo: 254

Sire: **BCC UPROAR 946G**

— KB L1 DOMINO 5104B  
 TA MISS 0100H  
 Dam — MONTANA MISS 1102Y ET

HH ADVANCE 1207Y  
 MONTANA MISS 740T  
 HH ADVANCE 9027W  
 MONTANA MISS 310

BW
78
Adj. 205
N/A
C/E
3

CED	BW	WW	YW	Milk	M&G	SC	REA	Marb	CHB
+2.6	+3.3	+53	+87	+21	+48	+1.0	+0.41	+0.07	+110

- **FALL BULL**
- Recommended for cows.
- Horned
- 254 is a great combination of Uproar and the 5104 bull.

# HEREFORD BULLS



DAM OF LOT 97

## Sire



623 is the \$40,000 valued top selling bull from our 2017 sale.

**Lot 97** **TA UPROAR 255**  
 BD: 9/3/22 Reg No: 44495839 Tattoo: 255

Sire: BCC UPROAR 946G

HH ADVANCE 1207Y  
 KB L1 DOMINETTE 376 A  
 Dam KB L1 DOMINETTE 167Y

HH ADVANCE 7034T ET  
 HH MISS ADVANCE 6054S  
 CL 1 DOMINO 795T 1ET  
 KB L1 DOMINETTE 6136

BW	91
Adj. 205	676
C/E	1

CED	BW	WW	YW	Milk	M&G	SC	REA	Marb	CHB
-2.6	+5.2	+62	+103	+22	+53	+1.2	+0.50	+0.01	+107

- **FALL BULL**
- Recommended for cows.
- Scurred
- Really like the combination of Uproar with the 376 donor cow.
- His dam is perfect uddered with great feet.
- He earned a weaning ratio of 109.

## KB L1 DOMINO 623D 1ET

BD: 2/15/2016 Reg No: 43675659 Tattoo: 623D

CL 1 DOMINO 9122W 1ET  
 Sire CL 1 DOMINETTE 055X

CL 1 DOMINO 732T  
 CL 1 DOMINETTE 475P  
 CL 1 DOMINO 860U  
 CL 1 DOMINETTE 7136T 1ET

HH ADVANCE 4055P  
 Dam HH MISS ADVANCE 1072Y ET  
 HH MISS ADVANCE 7003T

HH ADVANCE 145L  
 HH MISS ADVANCE 9065J  
 CL 1 DOMINO 320N  
 HH MISS ADVANCE 5139R ET

CED	BW	WW	YW	Milk	M&G	SC	REA	Marb	CHB
+3.4	+2.2	+53	+86	+32	+58	+0.9	+0.19	+0.26	+137



98

**Lot 98** **TA DOMINO 337**  
 BD: 1/8/23 Reg No: 44497015 Tattoo: 337

Sire: KB L1 DOMINO 623D 1ET

BCC UPROAR 946G  
 TA DOMINETTE 117J  
 Dam TA L1 DOMINETTE 922G

HAROLDSON'S UPGRADE T100 33D  
 BCC SCARLET 403B  
 CL 1 DOMINO 6104D  
 TA L1 DOMINETTE 729E

BW	73
Adj. 205	690
C/E	3

CED	BW	WW	YW	Milk	M&G	SC	REA	Marb	CHB
+3.0	+2.3	+56	+93	+32	+60	+0.9	+0.39	+0.18	+130

- Recommended for larger framed heifers or cows.
- Horned
- This bull is loaded up nicely for cow power.
- 337 has great weaning performance.

**Lot 99** **TA DOMINO 331**  
 BD: 1/5/23 Reg No: 44497008 Tattoo: 331

Sire: KB L1 DOMINO 623D 1ET

BCC UPROAR 946G  
 TA DOMINETTE 108J  
 Dam TA L1 DOMINETTE 923G

HAROLDSON'S UPGRADE T100 33D  
 BCC SCARLET 403B  
 KB L1 DOMINO 623D 1ET  
 TA L1 DOMINETTE 669D

BW	68
Adj. 205	582
C/E	4

CED	BW	WW	YW	Milk	M&G	SC	REA	Marb	CHB
+4.9	+0.9	+45	+76	+26	+48	+0.9	+0.26	+0.22	+128

- Recommended for heifers or cows.
- Horned
- 331's dam is an exciting Uproar daughter.

**Lot 100** **TA DOMINO 350**  
 BD: 1/28/23 Reg No: 44497028 Tattoo: 350

Sire: KB L1 DOMINO 623D 1ET

KB L1 DOMINO 5104B  
 TA L1 DOMINETTE 0304H  
 Dam TA L1 DOMINETTE 704E

HH ADVANCE 1207Y  
 MONTANA MISS 740T  
 CL 1 DOMINO 2121Z  
 KB L1 DOMINETTE 1200Y

BW	78
Adj. 205	684
C/E	3

CED	BW	WW	YW	Milk	M&G	SC	REA	Marb	CHB
+5.0	+1.8	+53	+82	+31	+58	+1.1	+0.22	+0.22	+126

- Recommended for larger framed heifers or cows.
- Horned
- 350 is out a top tier Hereford cow, 0304.
- She is a larger framed 5104 daughter with a perfect udder.
- Use 350 to add pounds at weaning and second to none replacement females.



# ANGUS OPEN HEIFERS



Lot **101** **AMDAHL ERICA HICKOK 3043**  
 BD: 12/28/22 Reg No: 20768605 Tattoo: 3043

Sire: **BALDRIDGE FLAGSTONE F411**

**HEIFER BOOK**  
 DEER VALLEY GROWTH FUND  
 AMDAHL ERICA HICKOK 544-9202  
 Dam AMDAHL ERICA HICKOK 104-544  
 BASIN PAYWEIGHT 1682  
 DEER VALLEY RITA 36113  
 MILL BAR HICKOK 7242  
 D R ERICA 104

CED	BW	WW	YW	DOC	HP	Milk	CW	MB	RE	\$M	\$C
+6	+2.1	+87	+150	+36	+7.5	+36	+69	+0.80	+0.49	+77	+299

- This will be surely be a big time herd bull producer.
- She has great feet and is deep ribbed and docile.
- Big time performance here.



Lot **103** **AMDAHL BLACKBIRD 3019**  
 BD: 12/21/22 Reg No: 20768601 Tattoo: 3019

Sire: **RRR FREE STATE R1110**

**HEIFER BOOK**  
 DEER VALLEY GROWTH FUND  
 AMDAHL BLACKBIRD 007  
 Dam AMDAHL BLACKBIRD 290-887  
 BASIN PAYWEIGHT 1682  
 DEER VALLEY RITA 36113  
 AMDAHL'S ALL AMERICAN 324  
 P A R HOMER'S BLACKBIRD 290

CED	BW	WW	YW	DOC	HP	Milk	CW	MB	RE	\$M	\$C
+14	-0.4	+79	+142	+20	+9.6	+28	+73	+0.38	+0.71	+64	+264

- Direct daughter of RRR Free State that will surely add strong maternal power.
- 3019 is out of a powerful growth fund daughter.

Lot **101** **AMDAHL ERICA 3150**  
 BD: 2/18/23 Reg No: 20627335 Tattoo: 3150

Sire: **POSS REMINGTON**

**HEIFER BOOK**  
 SPRING COVE RENO 4021  
 AMDAHL ERICA 544-9140  
 Dam AMDAHL ERICA HICKOK 104-544  
 KM BROKEN BOW 002  
 SPRING COVE LIZA 021  
 MILL BAR HICKOK 7242  
 D R ERICA 104

CED	BW	WW	YW	DOC	HP	Milk	CW	MB	RE	\$M	\$C
+3	+2.4	+86	+151	+26	+20.1	+32	+77	+1.33	+0.75	+87	+361

- **SALE FEATURE**
- 3150 has true donor cow potential written all over her.
- She is a direct daughter of Poss Remington and out of the great donor cow, Amdahl Erica 9140 who is owned by Hallow Top Angus.
- 3150 has 15 EPDs in the top 20%- she is top 1% for HP and \$C.
- She has the look and the cow power to elevate any program.



**AMDAHL ERICA 544-9140**  
 DAM OF LOT 101

Lot **103** **AMDAHL BLACKBIRD 3074**  
 BD: 1/2/23 Reg No: 20768604 Tattoo: 3074

Sire: **RRR FREE STATE R1110**

**HEIFER BOOK**  
 CONNEALY TREASURE 0369  
 AMDAHL BLACKBIRD 0103  
 Dam AMDAHL BLACKBIRD 290-7110  
 MGR TREASURE  
 JMC HIPPIE EXEC 0369 45121  
 PRAIRIE PRIDE NEXT STEP 2036  
 P A R HOMER'S BLACKBIRD 290

CED	BW	WW	YW	DOC	HP	Milk	CW	MB	RE	\$M	\$C
+13	+0.3	+73	+125	+20	+10.6	+25	+52	+0.83	+0.44	+65	+261

- Direct daughter of RRR Free State that will surely be a stand out producer in any program.
- She offers second to none CED followed by an outstanding EPD profile.
- Her dam is a nice uddered and good footed Treasure daughter.



**POSS REMINGTON - SIRE OF LOT 101**



# ANGUS OPEN HEIFERS

Lot **105** **AMDAHL MISS ERICA 3048**  
 BD: 12/28/22 Reg No: 20768602 Tattoo: 3048

Sire: **BALDRIDGE MOUNTAINEER**

AMDAHL RANGE MASTER 830  
 AMDAHL MISS ERICA 1167  
 Dam AMDAHL JD MISS ROCK 026-879

HA COWBOY UP 5405  
 AMDAHL MISS BP 380-509  
 AMDAHL'S ROCKETEER 636  
 AMDAHL NIGHTWATCH 821 026

CED	BW	WW	YW	DOC	HP	Milk	CW	MB	RE	\$M	\$C
+5	+0.4	+64	+119	+20	+8.5	+28	+47	+0.50	+1.16	+67	+264

- Great opportunity to get in on the first Mountaineer daughter to be offered.
- Her dam, Amdahl Miss Erica 1167 is a stand out Range Master daughter that embodies the Amdahl Program to a T.
- 3048 is loaded with Pathfinder and donor cows in her pedigree.



Lot **106** **AMDAHL DIXIE ERICA 3147**  
 BD: 2/11/23 Reg No: 20768603 Tattoo: 3147

Sire: **BALDRIDGE MOUNTAINEER**

G A R ASHLAND  
 AMDAHL DIXIE ERICA 1081  
 Dam AMDAHL DIXIE ERICA 994

G A R EARLY BIRD  
 CHAIR ROCK AMBUSH 1018  
 HA PRIME CUT 4493  
 AMDAHL MISS HOMER 172-380

CED	BW	WW	YW	DOC	HP	Milk	CW	MB	RE	\$M	\$C
+13	-1.7	+73	+134	+19	+11.0	+29	+50	+0.78	+1.24	+64	+283

- This young female is good footed with lots of look and style.
- Her dam, Amdahl Dixie Erica 1081 is backed by generations of Pathfinder cows.

## ANGUS OPEN DONOR

Lot **107** **HUWA 6017 KNOW HOW 0529**  
 BD: 9/15/20 Reg No: 20009744 Tattoo: 0529

Sire: **HOOVER KNOW HOW**

BASIN PAYWEIGHT 1682  
 HUWA 2902 PAYWEIGHT 6017  
 Dam GOODE PROPHET 2902

BASIN PAYWEIGHT 006S  
 21AR O LASS 7017  
 G A R PROPHET  
 GOODE 616 RITO 309

CED	BW	WW	YW	DOC	HP	Milk	CW	MB	RE	\$M	\$C
+7	+1.8	+69	+127	+10	+17.1	+25	+59	+1.36	+0.71	+65	+322

**• SALE FEATURE**

- 0529 is a full sister to Huwa All-In-One which was the \$130,000 bull who has been selling semen at record prices.
- She is currently being flushed at BovaGen and sells with 4 eggs sired by Baldrige War Cry.
- She is a great footed, easy fleshing 3 year old who is backed by generations of Pathfinders and donor cows.



0529 FEET

View Sale Videos here





# ANGUS BRED HEIFERS



Lot **108** **AMDAHL BLACKBIRD 2193**  
 BD: 2/17/22 Reg No: 20406089 Tattoo: 2193

Sire: **AMDAHL BLACK RIVER 093**

HEIFER GRADE  
 — PRAIRIE PRIDE NEXT STEP 2036  
 AMDAHL BLACKBIRD 290-7110  
 Dam — P A R HOMER'S BLACKBIRD 290  
 SYDGEN 928 DESTINATION 5420  
 FLYING V MISS PRIDE 426  
 PAR DAKOTA HOMER 05  
 C R R FREIGHTLINER N281

CED	BW	WW	YW	DOC	HP	Milk	CW	MB	RE	\$M	\$C
+5	+3.5	+88	+157	+18	+11.9	+25	+70	+0.21	+0.63	+57	+235

- **SALE FEATURE**
- 2193 embodies the Amdahl Program to a T.
- She is out of a highly proven donor cow, Amdahl Blackbird 7110.
- She is a good footed and long bodied Black River daughter that will surely compliment any herd.
- 2193 earned a weaning ratio of 110 and a yearling ratio of 113.
- Sells bred to calve 1-1-24 to RRR Grit Reg #20211734; with a heifer calf.



Lot **109** **AMDAHL ERICA 2206**  
 BD: 2/26/22 Reg No: 20406100 Tattoo: 2206

Sire: **AMDAHL RANGE MASTER 830**

HEIFER GRADE  
 — SPRING COVE RENO 4021  
 AMDAHL ERICA 544-9128  
 Dam — AMDAHL ERICA HICKOK 104-544  
 KM BROKEN BOW 002  
 SPRING COVE LIZA 021  
 MILL BAR HICKOK 7242  
 D R ERICA 104

CED	BW	WW	YW	DOC	HP	Milk	CW	MB	RE	\$M	\$C
+11	+1.4	+81	+134	+15	+15.1	+19	+49	+0.51	+0.21	+72	+238

- **SALE FEATURE**
- 2206 is loaded with Pathfinder and donor cows in her pedigree.
- Individual performance- WWR 111 and YWR 105.
- Sells bred to calve 2-15-24 to Huwa Steadfast Reg #20338444; with a heifer calf.



Lot **110** **AMDAHL BLACKBIRD 2110**  
 BD: 1/20/22 Reg No: 20406028 Tattoo: 2110

Sire: **AMDAHL RANGE MASTER 830**

HEIFER GRADE  
 — SYDGEN ENHANCE  
 AMDAHL BLACKBIRD 022  
 Dam — AMDAHL BLACKBIRD  
 SYDGEN EXCEED 3223  
 SYDGEN RITA 2618  
 CONNEALY BLACK GRANITE  
 ST MISS HOT FLASH BLACKBIRD

CED	BW	WW	YW	DOC	HP	Milk	CW	MB	RE	\$M	\$C
+4	+2.4	+80	+144	+22	+10.5	+23	+56	+1.03	+0.76	+55	+277

- Big time power cow potential here.
- She has second to none phenotype and depth of body.
- 2110 is a very feminine and good footed Range Master daughter.
- Sells bred to calve 1-17-24 to RRR Grit Reg #20211734.



Lot **111** **AMDAHL BLACKBIRD 2147**  
 BD: 1/30/22 Reg No: 20410374 Tattoo: 2147

Sire: **G A R ASHLAND**

HEIFER GRADE  
 — AMDAHL'S ROCKETEER 636  
 AMDAHL BLACKBIRD 0164  
 Dam — AMDAHL'S BLACKBIRD 120-414  
 MUSGRAVE AVIATOR  
 AMDAHL ERICA 431-465  
 SA 652 MISSING LINK 848 620  
 D R BLACKBIRD 120

CED	BW	WW	YW	DOC	HP	Milk	CW	MB	RE	\$M	\$C
+12	-0.2	+62	+108	+21	+7.5	+23	+43	+0.94	+0.93	+56	+275

- 2147 is a direct daughter out of GAR Ashland and loaded with the best cows in the Amdahl Program on the bottom side.
- Great carcass merit
- Sells bred to calve 1-26-24 to Huwa Steadfast Reg #20338444.



# ANGUS BRED COWS

Lot **112** **AMDAHL MISS DIXIE 056**  
 BD: 1/14/20 Reg No: 19798196 Tattoo: 056

Sire: G A R PHOENIX

AMDahl's Ultimate 802  
 AMDAHL MISS ULTIMATE747W-103  
 Dam O C C MISS NEWSLINE 747W

O C C LINEBRED 661L  
 P A R ERIKA'S TRAVELER 52  
 O C C TOTAL 616T  
 KSU MISS NEWSLINE 7197

CED	BW	WW	YW	DOC	HP	Milk	CW	MB	RE	\$M	\$C
+14	+0.1	+60	+99	+15	+8.8	+21	+51	+0.40	+0.48	+66	+244

**SALE FEATURE**

- 056 is well on her way to Pathfinder status.
- Calving interval: 2 at 344 days
- She has earned impressive ratios: 2 at 92 at birth, 2 at 106 at weaning
- Sells bred to calve 1-1-24 to Spring Cove Full Tilt Reg #20425117; with a heifer calf.



**BALDRIDGE WAR CRY** – SERVICE SIRE TO LOTS 113, 114, AND 115

Lot **113** **AMDAHL QUEEN DOLLY 005**  
 BD: 12/31/19 Reg No: 19799422 Tattoo: 005

Sire: SYDGEN ENHANCE

AMDahl's Heavy Duty 323  
 AMDAHL QUEEN DOLLY 418-707  
 Dam AMDAHL MISS CONSENSUS 72-418

W H S LIMELIGHT 64V  
 D R BLACKBIRD 133  
 SCHELSKES CONSENSUS 2327A  
 PAR TRAVELING WESTWIND 72

CED	BW	WW	YW	DOC	HP	Milk	CW	MB	RE	\$M	\$C
+3	+2.5	+75	+133	+27	+9.2	+29	+48	+0.94	+0.63	+58	+272

- 005 is a direct daughter of the great Amdahl Queen Dolly 707 Pathfinder donor cow.
- She is a large framed and long bodied female that is sure to add power.
- Individual performance- WWR 115 and YWR 109.
- Sells bred to calve 1-13-24 to Baldrige War Cry Reg #20342803



SON OF LOT 114



SON OF LOT 115

Lot **114** **AMDAHL DIXIE 979**  
 BD: 1/23/19 Reg No: 19501053 Tattoo: 979

Sire: LD CAPITALIST 316

CB BLOCK PARTY 156  
 AMDAHL'S DIXIE 014-369  
 Dam AMDAHL DIXIE 7402 014

WERNER WAR PARTY 2417  
 CB 965 MAINLINE  
 O C C LINEBRED 661L  
 JAUER 173 ANCHOR 2011 7402

CED	BW	WW	YW	DOC	HP	Milk	CW	MB	RE	\$M	\$C
+12	-0.9	+55	+98	+1	+6.1	+21	+45	+0.62	+0.54	+47	+235

- Lots of eye appeal with great thickness.
- Individual performance- WWR 107 and YWR 103.
- Her first bull calf weaned off at 808lbs and was a highlight in the 2022 sale.
- Sells bred to calve 1-4-24 to Baldrige War Cry Reg #20342803; with a heifer calf.



**114**



**115**

Lot **115** **AMDAHL MISS REMEDY 517-863**  
 BD: 1/27/18 Reg No: 19278214 Tattoo: 863

Sire: CTS REMEDY 1T01

AMDahl's Heavy Duty 323  
 AMDAHL MISS HVY DUTY 103-517  
 Dam AMDAHL MISS ULTIMATE747W-103

W H S LIMELIGHT 64V  
 D R BLACKBIRD 133  
 AMDAHL'S ULTIMATE 802  
 O C C MISS NEWSLINE 747W

CED	BW	WW	YW	DOC	HP	Milk	CW	MB	RE	\$M	\$C
+5	-0.1	+65	+119	+23	+11.9	+30	+44	+0.48	+0.61	+57	+240

- 863 is a direct daughter of CTS Remedy.
- Calving interval-4@343 days.
- She has earned impressive ratios- 4 calves with a nursing ratio of 104.
- Sells bred to calve 1-4-24 to Baldrige War Cry Reg #20342803; with a heifer calf.



# COMPLETE HEREFORD DISPERSION STARTING AT LOT 116 HEREFORD OPEN HEIFERS



**116**

Lot **116** BD: 8/9/22 **TA DOMINETTE 252** Reg No: 44495632 Tattoo: 252

Sire: BCC UPROAR 946G

TA L1 **DOMINETTE 9100G**  
Dam **DOMINETTE 9100G**  
KB L1 DOMINO 623D 1ET  
MONTANA MISS 1102Y ET

CL 1 DOMINO 215Z  
HH MISS ADVANCE 1072Y ET  
HH ADVANCE 9027W  
MONTANA MISS 310

BW
75
Adj. 205
696

CED	BW	WW	YW	Milk	M&G	SC	REA	Marb	CHB
+2.2	+2.9	+55	+91	+25	+53	+1.0	+0.44	+0.12	+116

- **SALE FEATURE**
- 252 is one of the very best females in the offering.
- The sky is the limit for this perfectly made Uproar daughter.
- Sells open



MATERNAL BROTHER OF LOT 116

Lot **117** BD: 8/8/22 **TA DOMINETTE 251** Reg No: 44497032 Tattoo: 251

Sire: BCC UPROAR 946G

TA L1 **DOMINETTE 820F ET**  
Dam **DOMINETTE 820F ET**  
CHURCHILL SENSATION 028X  
MONTANA MISS 745T

UPS DOMINO 3027  
CHURCHILL LADY 7202T ET  
KB L1 DOMINO 454P  
MONTANA MISS 210

BW
74
Adj. 205
704

CED	BW	WW	YW	Milk	M&G	SC	REA	Marb	CHB
+3.4	+1.9	+52	+85	+28	+53	+1.2	+0.52	+0.11	+115

- This is a great opportunity here to get in on an exciting pedigree.
- 251 will certainly make an exceptional mama cow.
- Sells open



**118**

Lot **118** BD: 12/7/22 **TA DOMINETTE 301** Reg No: 44496436 Tattoo: 301

Sire: BCC UPROAR 946G

TA L1 **DOMINETTE 833F**  
Dam **DOMINETTE 833F**  
KB L1 DOMINO 504C ET  
MONTANA MISS 207 Z

HH ADVANCE 2005Z  
CL 1 DOMINETTE 7136T 1ET  
CL 1 DOMINO 0100X  
MONTANA MISS 740T

BW
83
Adj. 205
774

CED	BW	WW	YW	Milk	M&G	SC	REA	Marb	CHB
+0.6	+3.5	+56	+93	+25	+53	+1.0	+0.53	+0.11	+118

- 301 had an actual weaning weight of 774lbs.
- She is a larger framed heifer that will be a standout in her future herd.

Lot **119** BD: 12/16/22 **TA DOMINETTE 303** Reg No: 44496662 Tattoo: 303

Sire: PYRAMID HISTORIC 0156 ET

TA **DOMINETTE 0318H**  
Dam **DOMINETTE 0318H**  
UPS SENSATION 2504 ET  
TA L1 DOMINETTE 725E

CHURCHILL SENSATION 028X  
NJW BW LADYSPORT DEW 78P ET  
HH ADVANCE 4344B  
KB L1 DOMINETTE 4102B

BW
71
Adj. 205
674

CED	BW	WW	YW	Milk	M&G	SC	REA	Marb	CHB
+8.6	-0.5	+50	+75	+31	+56	+0.9	+0.60	+0.08	+119

- 303 is a very attractive Historic daughter.
- Her maternal brother was a top selling in the May 2023 sale.

**View Sale Videos here**



# HEREFORD OPEN HEIFERS

Lot **120** BD: 12/18/22 Reg No: 44496668 Tattoo: 308

Sire: PYRAMID HISTORIC 0156 ET

CL 1 DOMINO 6104D  
 TA L1 DOMINETTE 922G  
 Dam TA L1 DOMINETTE 729E

CL 1 DOMINO 4168B 1ET  
 CL 1 DOMINETTE 362A  
 KB L1 DOMINO 406B  
 TA L1 DOMINETTE 516C

BW
79
Adj. 205
780

CED	BW	WW	YW	Milk	M&G	SC	REA	Marb	CHB
+5.0	+0.8	+53	+85	+36	+62	+0.8	+0.58	+0.09	+121

- **SALE FEATURE**
- 308 had an outstanding actual weaning weight of 780lbs.
- Big time donor cow potential here.
- Her dam, 922 is a great uddered and good footed 6104 daughter.



Lot **121** BD: 12/20/22 Reg No: 44496673 Tattoo: 311

Sire: BCC UPROAR 946G

KB L1 DOMINO 0102X  
 TA L1 DOMINETTE 624D  
 Dam KB L1 DOMINETTE 656

CL 1 DOMINO 592R 1ET  
 KB L1 DOMINETTE 616  
 CL 1 DOMINO 9126J 1ET  
 KB L1 DOMINETTE 353 ET

BW
83
Adj. 205
760

CED	BW	WW	YW	Milk	M&G	SC	REA	Marb	CHB
+2.9	+2.5	+47	+80	+25	+49	+1.1	+0.45	+0.09	+115

- 311 earned a weaning ratio of 103.
- Her dam, 624 is one of the finest females in the program.



Lot **122** BD: 12/22/22 Reg No: 44496674 Tattoo: 312

Sire: PYRAMID HISTORIC 0156 ET

CL 1 DOMINO 2121Z  
 MONTANA MISS TA 522C  
 Dam MONTANA MISS 137Y

CL 1 DOMINO 9122W 1ET  
 CL 1 DOMINETTE 924W 1ET  
 KB L1 DOMINO 826U  
 MONTANA MISS 5134R

BW
83
Adj. 205
650

CED	BW	WW	YW	Milk	M&G	SC	REA	Marb	CHB
+2.0	+2.2	+54	+86	+28	+55	+0.9	+0.51	+0.13	+122

- This girl is a long bodied Historic daughter out of one of the top producing females on the ranch.

Lot **123** BD: 12/23/22 Reg No: 44496676 Tattoo: 314

Sire: BCC UPROAR 946G

KB L1 DOMINO 504C ET  
 TA L1 DOMINETTE 842F  
 Dam MONTANA MISS TA 522C

HH ADVANCE 2005Z  
 CL 1 DOMINETTE 7136T 1ET  
 CL 1 DOMINO 2121Z  
 MONTANA MISS 137Y

BW
81
Adj. 205
716

CED	BW	WW	YW	Milk	M&G	SC	REA	Marb	CHB
+3.7	+2.3	+54	+88	+24	+51	+0.9	+0.49	+0.18	+123

- 314 offers a royal pedigree and will go on to do great things in her future herd.

Lot **124** BD: 12/26/22 Reg No: 44496680 Tattoo: 316

Sire: BCC UPROAR 946G

CL 1 DOMINO 215Z  
 TA L1 DOMINETTE 821F  
 Dam TA L1 DOMINETTE 516C

CL 1 DOMINO 9122W 1ET  
 CL 1 DOMINETTE 055X  
 KB L1 DOMINO 1202Y  
 KB L1 DOMINETTE 376 A

BW
82
Adj. 205
714

CED	BW	WW	YW	Milk	M&G	SC	REA	Marb	CHB
+1.8	+2.9	+62	+102	+25	+56	+0.9	+0.51	+0.18	+130

- Big performance female here.
- Her dam, 821 is a direct daughter of 215Z and is a stellar producer.





# HEREFORD OPEN HEIFERS

Lot **125** BD: 12/28/22 Reg No: 44496682 Tattoo: 318

Sire: PYRAMID HISTORIC 0156 ET

BW
73
Adj. 205
648

HH ADVANCE 2158Z  
TA L1 DOMINETTE 897F  
Dam KB L1 DOMINETTE 9192W

L1 DOMINO 08469  
HH MISS ADVANCE 6188S  
KB L1 DOMINO 521R  
KB L1 DOMINETTE 2127

CED	BW	WW	YW	Milk	M&G	SC	REA	Marb	CHB
+7.5	+0.4	+45	+71	+29	+51	+0.9	+0.47	+0.13	+115

• 318 is a well balanced Historic daughter out of a highly productive cow family.



Tim and Marcia and Art Handel

Lot **126** BD: 12/29/22 Reg No: 44496685 Tattoo: 319

Sire: BCC UPROAR 946G

BW
83
Adj. 205
760

KB L1 DOMINO 504C ET  
TA L1 DOMINETTE 830F  
Dam TA L1 DOMINETTE 625D

HH ADVANCE 2005Z  
CL 1 DOMINETTE 7136T 1ET  
CL 1 DOMINO 2121Z  
KB L1 DOMINETTE 3157 A

CED	BW	WW	YW	Milk	M&G	SC	REA	Marb	CHB
+1.9	+3.5	+60	+97	+26	+56	+1.1	+0.54	+0.15	+121

• 319 earned a weaning ratio of 107 and had an actual weaning weight of 760lbs.  
• Great combination of performance and maternal power second to none.



126

Lot **127** BD: 12/30/22 Reg No: 44496689 Tattoo: 321

Sire: BCC UPROAR 946G

BW
80
Adj. 205
690

CL 1 DOMINO 6104D  
TA L1 DOMINETTE 0315H  
Dam TA L1 DOMINETTE 888F

CL1 DOMINO 4168B 1ET  
CL 1 DOMINETTE 362A  
CL 1 DOMINO 269Z 1ET  
MONTANA MISS TA 518C

CED	BW	WW	YW	Milk	M&G	SC	REA	Marb	CHB
+0.6	+2.4	+54	+94	+29	+56	+1.0	+0.50	+0.10	+120

• 321 is a stylish Uproar daughter with great feet and legs.  
• Her dam 0315 is an outstanding producer with a great udder.



127

Lot **128** BD: 1/1/23 Reg No: 44496995 Tattoo: 323

Sire: BCC UPROAR 946G

BW
72
Adj. 205
622

BEHM 100W CUDA 504C  
TA DOMINETTE 0351H  
Dam TA L1 DOMINETTE 867F

NJW 73S M326 TRUST 100W ET  
BEHM R294 JASMAN102Y  
CL 1 DOMINO 269Z 1ET  
KB L1 DOMINETTE 3159 A

CED	BW	WW	YW	Milk	M&G	SC	REA	Marb	CHB
+4.7	+1.6	+55	+92	+26	+53	+1.0	+0.56	+0.18	+125

• This girl is a well put together young female who will make a great mama cow.

Lot **129** BD: 1/4/23 Reg No: 44497004 Tattoo: 327

Sire: PYRAMID HISTORIC 0156 ET

BW
73
Adj. 205
610

BCC UPROAR 946G  
TA DOMINETTE 125J  
Dam TA L1 DOMINETTE 901G

HAROLDSON'S UPGRADE T100 33D  
BCC SCARLET 403B  
HH ADVANCE 7074E  
TA L1 DOMINETTE 725E

CED	BW	WW	YW	Milk	M&G	SC	REA	Marb	CHB
+3.5	+1.8	+59	+91	+28	+57	+0.9	+0.70	+0.11	+125

• 327 earned a weaning ratio of 105 and has some of the best females in her pedigree.  
• Excellent combination of Uproar and Historic.

# COMPLETE HEREFORD DISPERSION HEREFORD OPEN HEIFERS

**Lot 130** **TA DOMINETTE 330** BD: 1/5/23 Reg No: 44497006 Tattoo: 330

Sire: KB L1 DOMINO 623D 1ET

BW
69
Adj. 205
584

TA MISS 143J  
Dam: BCC UPROAR 946G  
MONTANA MISS 207 Z

HAROLDSON'S UPGRADE T100 33D  
BCC SCARLET 403B  
CL 1 DOMINO 0100X  
MONTANA MISS 740T

CED	BW	WW	YW	Milk	M&G	SC	REA	Marb	CHB
+1.5	+2.7	+55	+91	+29	+57	+1.0	+0.38	+0.16	+126

- 330 earned a weaning ratio of 102.
- Her dam is a larger framed Uproar daughter out of the great 207 cow.
- Her sire, 623 is the \$40,000 valued herd sire that has done great things in the Hereford breed.

**Lot 131** **TA DOMINETTE 332** BD: 1/6/23 Reg No: 44497009 Tattoo: 332

Sire: KB L1 DOMINO 623D 1ET

BW
73
Adj. 205
650

TA DOMINETTE 0349H  
Dam: UPS SENSATION 2504 ET  
TA L1 DOMINETTE 841F

CHURCHILL SENSATION 028X  
NJW BW LADYSPORT DEW 78P ET  
CL 1 DOMINO 4168B 1ET  
TA L1 DOMINETTE 527C

CED	BW	WW	YW	Milk	M&G	SC	REA	Marb	CHB
+1.7	+1.6	+55	+89	+35	+63	+1.1	+0.36	+0.17	+127

- **SALE FEATURE**
- 332 earned a weaning ratio of 105.
- She truly has the potential to be one of the best females in this offering.
- Her dam is an outstanding producer and has ideal body type and look.

**Lot 132** **TA DOMINETTE 336** BD: 1/8/23 Reg No: 44497014 Tattoo: 336

Sire: KB L1 DOMINO 623D 1ET

BW
79
Adj. 205
600

TA L1 DOMINETTE 0357H ET  
Dam: CL 1 DOMINO 6104D  
KB L1 DOMINETTE 376 A

CL 1 DOMINO 4168B 1ET  
CL 1 DOMINETTE 362A  
HH ADVANCE 1207Y  
KB L1 DOMINETTE 167Y

CED	BW	WW	YW	Milk	M&G	SC	REA	Marb	CHB
+1.5	+2.7	+51	+88	+32	+58	+0.9	+0.21	+0.16	+124

- 336 is royally bred with the 376 cow on the bottom side and sired by the 623 bull.

**Lot 133** **TA DOMINETTE 339** BD: 1/11/23 Reg No: 44497018 Tattoo: 339

Sire: KB L1 DOMINO 623D 1ET

BW
81
Adj. 205
502

TA L1 DOMINETTE 858F  
Dam: KB L1 DOMINO 504C ET  
TA L1 DOMINETTE 655D

HH ADVANCE 2005Z  
HH ADVANCE 2005Z  
KB L1 DOMINO 0102X  
MONTANA MISS 208Z

CED	BW	WW	YW	Milk	M&G	SC	REA	Marb	CHB
+2.8	+2.7	+42	+71	+31	+52	+0.8	+0.11	+0.21	+122

- 339 is bred for success and has great pigment and style.

**Lot 134** **TA DOMINETTE 347** BD: 1/22/23 Reg No: 44497026 Tattoo: 347

Sire: PYRAMID HISTORIC 0156 ET

BW
72
Adj. 205
514

TA DOMINETTE 110J  
Dam: BCC UPROAR 946G  
TA L1 DOMINETTE 755E

HAROLDSON'S UPGRADE T100 33D  
BCC SCARLET 403B  
CL 1 DOMINO 269Z 1ET  
KB L1 DOMINETTE 278Z

CED	BW	WW	YW	Milk	M&G	SC	REA	Marb	CHB
+3.4	+1.4	+51	+84	+26	+51	+0.8	+0.64	+0.04	+116

- 347 is out of an exciting first calf daughter sired by Uproar.
- Her grandam, 755 is one of the top producing females in the herd.

**Lot 135** **TA DOMINETTE 349** BD: 1/27/23 Reg No: 44497027 Tattoo: 349

Sire: BCC UPROAR 946G

BW
74
Adj. 205
620

TA L1 DOMINETTE 760E  
Dam: HH ADVANCE 4344B  
MONTANA MISS TA 507C

HH ADVANCE 221 ET  
HH MISS ADVANCE 7003T  
HH ADVANCE 2036Z ET  
MONTANA MISS 108Y

CED	BW	WW	YW	Milk	M&G	SC	REA	Marb	CHB
+4.7	+1.7	+53	+82	+25	+51	+0.9	+0.55	+0.13	+122

- 349 is a very attractive Uproar daughter out of the high producing 760 cow.
- Her dam, 760 has great breed character and ideal udder structure.

**Lot 136** **TA DOMINETTE 352** BD: 1/29/23 Reg No: 44497029 Tattoo: 352

Sire: PYRAMID HISTORIC 0156 ET

BW
80
Adj. 205
700

TA L1 DOMINETTE 704E  
Dam: CL 1 DOMINO 2121Z  
KB L1 DOMINETTE 1200Y

CL 1 DOMINO 9122W 1ET  
CL 1 DOMINETTE 924W 1ET  
HH ADVANCE 6001S  
KB L1 DOMINETTE 678

CED	BW	WW	YW	Milk	M&G	SC	REA	Marb	CHB
+2.8	+1.7	+58	+86	+34	+63	+1.1	+0.56	+0.18	+129

- **SALE FEATURE**
- 352 earned an outstanding weaning ratio of 115 with an actual weaning weight of 700lbs.
- Her dam, 704 is one of the finest females on the ranch and has been the best producer for many years.

**Lot 137** **TA DOMINETTE 353** BD: 2/10/23 Reg No: 44497030 Tattoo: 353

Sire: BCC UPROAR 946G

BW
95
Adj. 205
590

TA L1 DOMINETTE 807F  
Dam: CL 1 DOMINO 269Z 1ET  
CHURCHILL LADY 5143R ET

CL 1 DOMINO 860U  
CL 1 DOMINETTE 759T 1ET  
CHURCHILL MVP 188  
CHURCHILL LADY 103

CED	BW	WW	YW	Milk	M&G	SC	REA	Marb	CHB
-4.6	+5.0	+57	+96	+23	+51	+1.0	+0.56	-0.05	+105

- 353 earned a weaning ratio of 102.
- She is a moderate female that is bred for longevity.



# COMPLETE HEREFORD DISPERSION HEREFORD BRED HEIFERS

**Lot 138** **TA L1 DOMINETTE 201K**  
 BD: 12/24/21 Reg No: 44384361 Tattoo: 201

Sire: KB L1 DOMINO 623D 1ET

— HH ADVANCE 7074E  
 TA L1 DOMINETTE 901G  
 Dam — TA L1 DOMINETTE 725E

HH ADVANCE 1013Y ET  
 HH MISS ADVANCE 3015A  
 HH ADVANCE 4344B  
 KB L1 DOMINETTE 4102B

CED	BW	WW	YW	Milk	M&G	SC	REA	Marb	CHB
+6.1	+1.2	+52	+80	+30	+57	+1.1	+0.25	+0.23	+126

- This female is a direct 623 daughter out of a moderate and easy fleshing 7074 daughter.
- Bred to Highland 1403; Due 1-8-24 with a heifer calf



**KB L1 DOMINO 623D 1 ET**  
 SIRE OF LOT 138

**Lot 139** **TA DOMINETTE 203K**  
 BD: 12/29/21 Reg No: 44384363 Tattoo: 203

Sire: BCC UPROAR 946G

— CL 1 DOMINO 6104D  
 TA L1 DOMINETTE 922G  
 Dam — TA L1 DOMINETTE 729E

CL 1 DOMINO 4168B 1ET  
 CL 1 DOMINETTE 362A  
 KB L1 DOMINO 406B  
 TA L1 DOMINETTE 516C

CED	BW	WW	YW	Milk	M&G	SC	REA	Marb	CHB
+0.8	+2.7	+54	+92	+30	+57	+0.9	+0.51	+0.09	+119

- **SALE FEATURE**
- This female could be one of the very best females in the offering.
- She has added thickness and style.
- Her maternal sister is also a sale feature and is the top weaning heifer calf in 2023.
- Bred to Highland 1403; Due 1-6-24 with a bull calf



**Lot 140** **TA DOMINETTE 207K**  
 BD: 1/2/22 Reg No: 44388476 Tattoo: 207

Sire: BCC UPROAR 946G

— CL 1 DOMINO 386A 1ET  
 TA L1 DOMINETTE 709E  
 Dam — KB L1 DOMINETTE 1146Y

CL 1 DOMINO 1108Y 1ET  
 CL 1 DOMINETTE 440P 1ET  
 CL 1 DOMINO 862U  
 KB L1 DOMINETTE 654

CED	BW	WW	YW	Milk	M&G	SC	REA	Marb	CHB
+3.1	+1.8	+49	+80	+22	+46	+1.0	+0.47	+0.20	+123

- This Uproar daughter offers exceptional maternal traits with a highly proven pedigree.
- Her dam, 709 was a long bodied, feminine 386 daughter.
- Bred to Highland 1403; Due 1-15-24



**Lot 141** **TA L1 DOMINETTE 208K**  
 BD: 1/2/22 Reg No: 44388477 Tattoo: 208

Sire: KB L1 DOMINO 623D 1ET

— KB L1 DOMINO 623D 1ET  
 TA L1 DOMINETTE 917G  
 Dam — TA L1 DOMINETTE 750E

CL 1 DOMINO 215Z  
 HH MISS ADVANCE 1072Y ET  
 KB L1 DOMINO 406B  
 MONTANA MISS TA 518C

CED	BW	WW	YW	Milk	M&G	SC	REA	Marb	CHB
+2.6	+2.7	+49	+81	+30	+55	+0.9	+0.14	+0.21	+126

- **SALE FEATURE**
- 208 is a good footed 623 daughter.
- Her dam, 917 weans off some of the biggest calves every year.
- Maternal brother, 329 is a sale feature and is one of the best brother raised to date.
- Bred to Highland 1403; Due 1-11-24 with a heifer calf

View Sale Videos here



# HEREFORD BRED HEIFERS

Lot **142** **TA L1 DOMINETTE 209K**  
 BD: 1/3/22 Reg No: 44388478 Tattoo: 209

Sire: KB L1 DOMINO 623D 1ET

CL 1 DOMINO 2121Z  
 TA L1 DOMINETTE 704E  
 Dam KB L1 DOMINETTE 1200Y

CL 1 DOMINO 9122W 1ET  
 CL 1 DOMINETTE 924W 1ET  
 HH ADVANCE 6001S  
 KB L1 DOMINETTE 678

CED	BW	WW	YW	Milk	M&G	SC	REA	Marb	CHB
+1.7	+2.7	+53	+82	+35	+61	+1.2	+0.20	+0.26	+131

**• SALE FEATURE**

- If you are looking for a Line 1 Hereford, look no further then this young female, 209.
- Sired by the great 623.
- Her dam, 704 is the top Hereford cow in the program.
- She ranks in the top 10% of the breed for teet and the top 7% for MM.
- 209 was the top weaning weight heifer in 2022.
- Bred to Highland 1403; Due 1-5-24 with a bull calf



Lot **143** **TA DOMINETTE 210K**  
 BD: 1/3/22 Reg No: 44388479 Tattoo: 210

Sire: BCC UPROAR 946G

EFBEEF X651 TESTED A250  
 TA DOMINETTE 0322H  
 Dam TA L1 DOMINETTE 849F

EFBEEF TFL U208 TESTED X651 ET  
 EFBEEF 6378 KATE W484  
 KB L1 DOMINO 504C ET  
 TA L1 DOMINETTE 650D

CED	BW	WW	YW	Milk	M&G	SC	REA	Marb	CHB
+0.9	+3.4	+59	+95	+24	+54	+1.1	+0.50	+0.25	+127

**• SALE FEATURE**

- This Uproar daughter is moderately made with great depth of body and overall look.
- Her dam, 0322 is a perfectly made Tested daughter with a perfect udder.
- Bred to Highland 1403; Due 1-15-24 with a heifer calf



**TA L1 DOMINETTE 704E**  
 DAM OF LOT 142

Lot **144** **TA DOMINETTE 212K**  
 BD: 1/5/22 Reg No: 44388481 Tattoo: 212

Sire: BCC UPROAR 946G

CL 1 DOMINO 269Z 1ET  
 TA L1 DOMINETTE 755E  
 Dam KB L1 DOMINETTE 278Z

CL 1 DOMINO 860U  
 CL 1 DOMINETTE 759T 1ET  
 KB L1 DOMINO 615Z  
 KB L1 DOMINETTE 601

CED	BW	WW	YW	Milk	M&G	SC	REA	Marb	CHB
+2.1	+2.0	+49	+87	+22	+46	+0.9	+0.50	-0.01	+104

- 212 is sure to make a powerful female.
- Her bull calf will surely make a great herd sire in the future.
- Bred to Highland 1403; Due 1-7-24 with a bull calf

**View Sale Videos here**



Lot **145** **TA L1 DOMINETTE 215K**  
 BD: 1/6/22 Reg No: 44388482 Tattoo: 215

Sire: KB L1 DOMINO 623D 1ET

KB L1 DOMINO 615Z  
 KB L1 DOMINETTE 267 Z  
 Dam KB L1 DOMINETTE 633

KB L1 DOMINO 218  
 L1 DOMINETTE 4136P  
 CL1 DOMINO 180L  
 KB AMY 1158

CED	BW	WW	YW	Milk	M&G	SC	REA	Marb	CHB
+2.5	+1.8	+42	+72	+25	+47	+0.8	+0.15	+0.10	+112

- 215 is a great Line 1 female that brings together exciting vintage genetics.
- Bred to Highland 1403; Due 1-8-24 with a female





# HEREFORD BRED HEIFERS

Lot **146** BD: 1/9/22 **TA MISS 217K** Reg No: 44388076 Tattoo: 217

Sire: BCC UPROAR 946G

HH ADVANCE 1207Y  
MONTANA MISS 3133 A  
Dam MONTANA MISS 119Y

HH ADVANCE 7034T ET  
HH MISS ADVANCE 6054S  
CL 1 DOMINO 849U  
MONTANA MISS 973W

CED	BW	WW	YW	Milk	M&G	SC	REA	Marb	CHB
+2.2	+3.5	+53	+86	+21	+48	+1.1	+0.37	+0.08	+109

- Uproar really stamps his females, and 217 is no exception.
- She will add eye appeal and longevity to her future herd.
- Bred to Highland 1403; Due 1-6-24 with a heifer calf



BCC UPROAR 946G

Lot **147** BD: 1/11/22 **TA DOMINETTE 219K** Reg No: 44497031 Tattoo: 219

Sire: BCC UPROAR 946G

KB L1 DOMINO 5104B  
TA L1 DOMINETTE 0305H  
Dam TA L1 DOMINETTE 709E

HH ADVANCE 1207Y  
MONTANA MISS 740T  
CL 1 DOMINO 386A 1ET  
KB L1 DOMINETTE 1146Y

CED	BW	WW	YW	Milk	M&G	SC	REA	Marb	CHB
+0.2	+3.4	+58	+92	+22	+50	+1.1	+0.52	+0.12	+118

- 219 is another exciting combination of Uproar on top of a 5104 daughter.
- Her dam, 0305 is moderate, dark and easy fleshing.
- Bred to Highland 1403; Due 1-8-24 with a heifer calf



Lot **148** BD: 1/11/22 **TA DOMINETTE 220K** Reg No: 44388290 Tattoo: 220

Sire: BCC UPROAR 946G

KB L1 DOMINO 623D 1ET  
TA L1 DOMINETTE 923G  
Dam TA L1 DOMINETTE 669D

CL 1 DOMINO 215Z  
HH MISS ADVANCE 1072Y ET  
CL 1 DOMINO 269Z 1ET  
KB L1 DOMINETTE 803U

CED	BW	WW	YW	Milk	M&G	SC	REA	Marb	CHB
+0.6	+2.3	+47	+80	+21	+44	+0.9	+0.39	+0.12	+117

- 220 will add udder quality, longevity and docility.
- Her dam, 923 is a stylish 623 daughter.
- Bred to Highland 1403; Due 1-15-24 with a bull calf



Lot **149** BD: 1/12/22 **TA DOMINETTE 223K** Reg No: 44388293 Tattoo: 223

Sire: BCC UPROAR 946G

BEHM 100W CUDA 504C  
TA MISS DOMINETTE 0352H  
Dam MONTANA MISS 326A

NJW 73S M326 TRUST 100W ET  
BEHM R294 JASMAN102Y  
HH ADVANCE 1207Y  
MONTANA MISS 108Y

CED	BW	WW	YW	Milk	M&G	SC	REA	Marb	CHB
+11.3	+0.4	+57	+91	+24	+53	+1.1	+0.56	+0.24	+129

- 223 is a low birth higher performance female that will be a steady producer in her future herd.
- Bred to Highland 1403; Due 2-8-24



# COMPLETE HEREFORD DISPERSION HEREFORD BRED HEIFERS

**Lot 150** BD: 1/16/22 Reg No: 44388304 Tattoo: 228

Sire: BCC UPROAR 946G

BEHM 100W CUDA 504C  
TA L1 DOMINETTE 0341H  
Dam TA L1 DOMINETTE 0341H

CED	BW	WW	YW	Milk	M&G	SC	REA	Marb	CHB
+0.2	+4.0	+58	+93	+25	+53	+1.0	+0.52	+0.13	+118

- This Uproar daughter is backed by one of the very best females to be produced on the ranch, 0341.
- Her dam, 0341 is a long bodied and good uddered Cuda daughter.
- Bred to Highland 1403; Due 1-12-24 with a bull calf

OUT OF SALE



150

**Lot 151** BD: 1/18/22 Reg No: 44388307 Tattoo: 230

Sire: BCC UPROAR 946G

HH ADVANCE 2158Z  
TA L1 DOMINETTE 897F  
Dam KB L1 DOMINETTE 9192W

CED	BW	WW	YW	Milk	M&G	SC	REA	Marb	CHB
+2.5	+2.9	+55	+90	+24	+51	+1.1	+0.51	+0.12	+113

- 230 was one of the top weaning weight heifers of her class.
- She comes from a long line of high producing females.
- Bred to Highland 1403; Due 2-5-24 with a heifer calf



151

**Lot 152** BD: 1/20/22 Reg No: 44388309 Tattoo: 232

Sire: BCC UPROAR 946G

KB L1 DOMINO 504C ET  
TA L1 DOMINETTE 858F  
Dam TA L1 DOMINETTE 655D

CED	BW	WW	YW	Milk	M&G	SC	REA	Marb	CHB
+0.2	+4.0	+58	+93	+25	+53	+1.0	+0.52	+0.13	+118

- 232 is a growthy, high performance Uproar daughter.
- Her dam, 858 is a highly proven female that is backed by some of the best females in the breed.
- Bred to Highland 1403; Due 1-22-24



152

**Lot 153** BD: 1/21/22 Reg No: 44388310 Tattoo: 233

Sire: BCC UPROAR 946G

CL 1 DOMINO 215Z  
TA L1 DOMINETTE 821F  
Dam TA L1 DOMINETTE 516C

CED	BW	WW	YW	Milk	M&G	SC	REA	Marb	CHB
-0.9	+3.9	+63	+105	+25	+57	+0.8	+0.50	+0.16	+128

- 233 is the ideal female for performance, maternal traits and longevity.
- Her dam, 821 is an extremely deep bodied, high producing 215Z daughter that goes back to the great 376 donor cow.
- Bred to Highland 1403; Due 2-18-24



153



# COMPLETE HEREFORD DISPERSION HEREFORD BRED HEIFERS & 3 YEAR OLDS



**Lot** **TA DOMINETTE 240K**  
**154** BD: 2/2/22 Reg No: 44388318 Tattoo: 240

**Sire:** BCC UPROAR 946G

CL 1 DOMINO 269Z 1ET  
TA L1 DOMINETTE 888F  
Dam MONTANA MISS TA 518C

CL 1 DOMINO 860U  
CL 1 DOMINETTE 759T 1ET  
CL 1 DOMINO 2215Z 1ET  
MONTANA MISS 208Z

CED	BW	WW	YW	Milk	M&G	SC	REA	Marb	CHB
-1.4	+4.1	+64	+109	+23	+55	+1.2	+0.55	+0.03	+110

- 240 is a larger framed Uproar daughter with lots of yearling performance.
- Bred to Highland 1403; Due 1-10-24 with a bull calf

**Lot** **TA L1 DOMINETTE 102J**  
**155** BD: 12/20/20 Reg No: 44410943 Tattoo: 102

**Sire:** KB L1 DOMINO 5104B

KB L1 DOMINO 406B  
TA L1 DOMINETTE 750E  
Dam MONTANA MISS TA 518C

HH ADVANCE 1038Y ET  
KB 11 DOMINETTE 195Y  
CL 1 DOMINO 2215Z 1ET  
MONTANA MISS 208Z

CED	BW	WW	YW	Milk	M&G	SC	REA	Marb	CHB
+4.7	+2.5	+49	+76	+25	+49	+1.0	+0.15	+0.10	+103

- 102 is out of a powerful and deep bodied dam, 750E.
- Full sister to 101.
- Bred to Uproar 946; Due 1-2-24

**Lot** **TA L1 DOMINETTE 106J**  
**156** BD: 1/3/21 Reg No: 44277587 Tattoo: 106

**Sire:** KB L1 DOMINO 5104B

CL 1 DOMINO 269Z 1ET  
TA L1 DOMINETTE 888F  
Dam MONTANA MISS TA 518C

CL 1 DOMINO 860U  
CL 1 DOMINETTE 759T 1ET  
CL 1 DOMINO 2215Z 1ET  
MONTANA MISS 208Z

CED	BW	WW	YW	Milk	M&G	SC	REA	Marb	CHB
+3.6	+1.6	+46	+78	+22	+45	+1.1	+0.22	+0.02	+93

- 5104 really stamps his daughters with look and strong maternal traits.
- Her dam is a nice uddered and good footed female.
- Bred to Belong 2170; Due 1-18-24 with a bull calf

**Lot** **TA DOMINETTE 108J**  
**157** BD: 1/4/21 Reg No: 44278355 Tattoo: 108

**Sire:** BCC UPROAR 946G

KB L1 DOMINO 623D 1ET  
TA L1 DOMINETTE 923G  
Dam TA L1 DOMINETTE 669D

CL 1 DOMINO 215Z  
HH MISS ADVANCE 1072Y ET  
CL 1 DOMINO 269Z 1ET  
KB L1 DOMINETTE 803U

CED	BW	WW	YW	Milk	M&G	SC	REA	Marb	CHB
+1.7	+1.7	+46	+79	+20	+43	+0.9	+0.39	+0.13	+117

- 108 is a deep bodied, easy fleshing Uproar daughter.
- Her dam, 923 is a moderate and stylish 623 daughter.
- Bred to Belong 2170; Due 1-24-24 with a bull calf

**Lot** **TA DOMINETTE 110J**  
**158** BD: 1/6/21 Reg No: 44278357 Tattoo: 110

**Sire:** BCC UPROAR 946G

CL 1 DOMINO 269Z 1ET  
TA L1 DOMINETTE 755E  
Dam KB L1 DOMINETTE 278Z

CL 1 DOMINO 860U  
CL 1 DOMINETTE 759T 1ET  
KB L1 DOMINO 615Z  
KB L1 DOMINETTE 601

CED	BW	WW	YW	Milk	M&G	SC	REA	Marb	CHB
+0.1	+2.8	+50	+88	+21	+46	+0.9	+0.49	-0.03	+103

- 110 is a larger framed Uproar daughter.
- Her dam, 755 is an easy fleshing, great footed 269 daughter that has been an outstanding producer.
- Bred to Belong 2170; Due 1-18-24 with a bull calf



**Lot** **TA DOMINETTE 117J**  
**159** BD: 1/14/21 Reg No: 44278361 Tattoo: 117

**Sire:** BCC UPROAR 946G

CL 1 DOMINO 6104D  
TA L1 DOMINETTE 922G  
Dam TA L1 DOMINETTE 729E

CL 1 DOMINO 4168B 1ET  
CL 1 DOMINETTE 362A  
KB L1 DOMINO 406B  
TA L1 DOMINETTE 516C

CED	BW	WW	YW	Milk	M&G	SC	REA	Marb	CHB
-0.1	+3.3	+59	+99	+31	+61	+0.9	+0.56	+0.07	+118

- **SALE FEATURE**
- 117 is out of the great Dominette 376 cow family.
- Best females in the program that come from this pedigree.
- Bred to Belong 2170; Due 1-28-24

# HEREFORD BRED 3 YEAR OLDS

Lot **160** **TA L1 DOMINETTE 122J**  
 BD: 1/19/21 Reg No: 44410947 Tattoo: 122

Sire: KB L1 DOMINO 5104B

— KB L1 DOMINO 504C ET  
 TA L1 DOMINETTE 833F  
 Dam — MONTANA MISS 207 Z

HH ADVANCE 2005Z  
 CL 1 DOMINETTE 7136T 1ET  
 CL 1 DOMINO 0100X  
 MONTANA MISS 740T

CED	BW	WW	YW	Milk	M&G	SC	REA	Marb	CHB
+3.5	+3.0	+49	+79	+24	+49	+1.1	+0.23	+0.10	+107

- 122 is already off to a great start weaning off an eye appealing bull and breeding right back for early January calving.
- Bred to Uproar 946; Due 1-3-24 with a heifer calf

Lot **161** **TA DOMINETTE 123J**  
 BD: 1/20/21 Reg No: 44278661 Tattoo: 123

Sire: BEHM 100W CUDA 504C

— KB L1 DOMINO 1202Y  
 TA L1 DOMINETTE 516C  
 Dam — KB L1 DOMINETTE 376 A

CL 1 DOMINO 7110T  
 KB L1 DOMINETTE 647  
 HH ADVANCE 1207Y  
 KB L1 DOMINETTE 167Y

CED	BW	WW	YW	Milk	M&G	SC	REA	Marb	CHB
+5.6	+2.2	+65	+106	+36	+69	+1.1	+0.41	+0.26	+134

- **SALE FEATURE**
- 123 is a larger framed Cuda daughter out of the high producing dam, 516.
- She ranks in the top 10% of the breed for WW, YW, MM, MG, and Marb.
- Bred to Highland 1403; Due 4-27-24 with a heifer calf

Lot **162** **TA MISS 124J**  
 BD: 1/21/21 Reg No: 44277593 Tattoo: 124

Sire: KB L1 DOMINO 5104B

— CL 1 DOMINO 2121Z  
 MONTANA MISS TA 522C  
 Dam — MONTANA MISS 137Y

CL 1 DOMINO 9122W 1ET  
 CL 1 DOMINETTE 924W 1ET  
 KB L1 DOMINO 826U  
 MONTANA MISS 5134R

CED	BW	WW	YW	Milk	M&G	SC	REA	Marb	CHB
+4.3	+3.5	+56	+88	+21	+49	+0.9	+0.14	+0.25	+120

- **SALE FEATURE**
- 124 is already hitting the most important traits for a mama cow: breed back and had one of the top weaning weight bulls in this years calf crop.
- Bred to Belong 2170; Due 1-18-24 with a bull calf



View Sale Videos here

Lot **163** **TA DOMINETTE 125J**  
 BD: 1/24/21 Reg No: 44275272 Tattoo: 125

Sire: BCC UPROAR 946G

— HH ADVANCE 7074E  
 TA L1 DOMINETTE 901G  
 Dam — TA L1 DOMINETTE 725E

HH ADVANCE 1013Y ET  
 HH MISS ADVANCE 3015A  
 HH ADVANCE 4344B  
 KB L1 DOMINETTE 4102B

CED	BW	WW	YW	Milk	M&G	SC	REA	Marb	CHB
+1.1	+2.9	+59	+93	+25	+55	+1.2	+0.54	+0.12	+119

- 125 offers eye appeal in a moderate frame.
- She is off to a great start already weaning off a top end heifer calf.
- Bred to Highland 1403; Due 2-25-24



163

Lot **164** **TA DOMINETTE 132J**  
 BD: 2/11/21 Reg No: 44275281 Tattoo: 132

Sire: BCC UPROAR 946G

— CL 1 DOMINO 269Z 1ET  
 TA L1 DOMINETTE 867F  
 Dam — KB L1 DOMINETTE 3159 A

CL 1 DOMINO 860U  
 CL 1 DOMINETTE 759T 1ET  
 KB L1 DOMINO 121Y  
 L1 DOMINETTE 4136P

CED	BW	WW	YW	Milk	M&G	SC	REA	Marb	CHB
+2.0	+2.2	+53	+89	+22	+48	+0.9	+0.49	+0.05	+107

- This young Uproar daughter is already checking all the boxes at a young age.
- She is bred back for early January calving once again and already weaned off a powerful Historic bull calf.
- Bred to Highland 1403; Due 1-3-24 with bull calf



**BAR STAR BELONG 2170 ET**  
 REG: 44379478 SERVICE SIRE TO MANY BRED COWS SELLING



# HEREFORD BRED COWS



Lot **165** BD: 3/1/21 **TA MISS 143J**  
Reg No: 44275287 Tattoo: 143

Sire: BCC UPROAR 946G

CL 1 DOMINO 0100X  
MONTANA MISS 207 Z  
Dam MONTANA MISS 740T

CL 1 DOMINO 860U  
CL 1 DOMINETTE 193L  
CL 1 DOMINO 9126J 1ET  
MONTANA MISS 756

CED	BW	WW	YW	Milk	M&G	SC	REA	Marb	CHB
-3.7	+4.5	+58	+100	+27	+56	+1.1	+0.55	+0.03	+114

- 143 is a larger framed Uproar daughter.
- Her dam, Montana Miss 207 was a cornerstone female in our program.
- Bred to Belong 2170; Due 1-5-24



Lot **166** BD: 3/2/21 **TA DOMINETTE 144J**  
Reg No: 44275288 Tattoo: 144

Sire: BCC UPROAR 946G

KB L1 DOMINO 406B  
TA L1 DOMINETTE 729E  
Dam TA L1 DOMINETTE 516C

HH ADVANCE 1038Y ET  
KB 11 DOMINETTE 195Y  
KB L1 DOMINO 1202Y  
KB L1 DOMINETTE 376 A

CED	BW	WW	YW	Milk	M&G	SC	REA	Marb	CHB
+0.8	+3.8	+60	+100	+24	+54	+1.0	+0.55	+0.02	+109

- **SALE FEATURE**
- 144 is sure to add bottom line profit to any operation.
- Her dam, 729 is a moderate and long bodied female with a great udder.
- Bred to Belong 2170; Due 1-25-24 with a bull calf



Lot **167** BD: 1/10/20 **TA L1 DOMINETTE 0304H**  
Reg No: 44177360 Tattoo: 0304

Sire: KB L1 DOMINO 5104B

CL 1 DOMINO 2121Z  
TA L1 DOMINETTE 704E  
Dam KB L1 DOMINETTE 1200Y

CL 1 DOMINO 9122W 1ET  
CL 1 DOMINETTE 924W 1ET  
HH ADVANCE 6001S  
KB L1 DOMINETTE 678

CED	BW	WW	YW	Milk	M&G	SC	REA	Marb	CHB
+4.5	+2.1	+52	+77	+30	+56	+1.3	+0.22	+0.18	+116

- 0304 is one of the very best 2020 females.
- She os out of the great 704 cow which is one of the finest females ever produced in our program.
- Great combination of 5104 and 2121.
- Bred to Belong 2170; Due 1-8-24 with a heifer calf



Lot **168** BD: 1/10/20 **TA L1 DOMINETTE 0305H**  
Reg No: 44177361 Tattoo: 0305

Sire: KB L1 DOMINO 5104B

CL 1 DOMINO 386A 1ET  
TA L1 DOMINETTE 709E  
Dam KB L1 DOMINETTE 1146Y

CL 1 DOMINO 1108Y 1ET  
CL 1 DOMINETTE 440P 1ET  
CL 1 DOMINO 862U  
KB L1 DOMINETTE 654

CED	BW	WW	YW	Milk	M&G	SC	REA	Marb	CHB
+5.9	+1.7	+49	+75	+24	+49	+1.1	+0.25	+0.18	+114

- **SALE FEATURE**
- 0305 is a darker made 5104 daughter.
- She has great disposition and udder quality.
- Her dam, 709 is a long bodied and feminine 386 daughter.
- Bred to Highland 1403; Due 1-5-24



# COMPLETE HEREFORD DISPERSION HEREFORD BRED COWS

Lot **169** **TA L1 DOMINETTE 0315H**  
 BD: 1/13/20 Reg No: 44172997 Tattoo: 0315

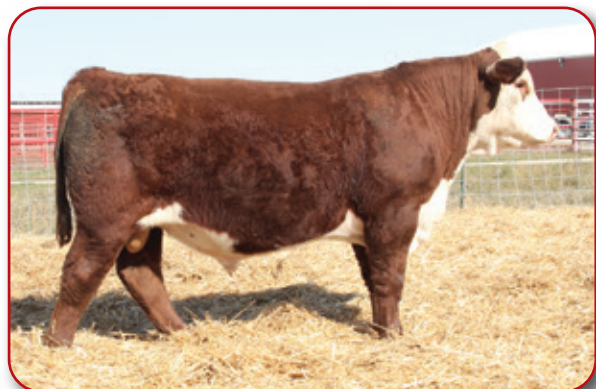
Sire: CL 1 DOMINO 6104D

CL 1 DOMINO 269Z 1ET  
 TA L1 DOMINETTE 888F  
 Dam MONTANA MISS TA 518C

CL 1 DOMINO 860U  
 CL 1 DOMINETTE 759T 1ET  
 CL 1 DOMINO 2215Z 1ET  
 MONTANA MISS 208Z

CED	BW	WW	YW	Milk	M&G	SC	REA	Marb	CHB
+2.5	+1.3	+49	+88	+38	+63	+0.9	+0.23	+0.11	+114

- 0315 is a long spined, gentle female with superb maternal traits.
- Bred to Highland 1403; Due 2-5-24



SON OF LOT 169



Lot **170** **TA DOMINETTE 0318H**  
 BD: 1/15/20 Reg No: 44180301 Tattoo: 0318

Sire: UPS SENSATION 2504 ET

HH ADVANCE 4344B  
 TA L1 DOMINETTE 725E  
 Dam KB L1 DOMINETTE 4102B

HH ADVANCE 221 ET  
 HH MISS ADVANCE 7003T  
 HH ADVANCE 1207Y  
 KB L1 DOMINETTE 803U

CED	BW	WW	YW	Milk	M&G	SC	REA	Marb	CHB
+8.2	+0.0	+48	+73	+32	+57	+1.0	+0.37	+0.03	+103

- 0318 is a larger framed 2504 daughter.
- Her dam, 725 was an exceptional female with style.
- Bred to Belong 2170; Due 1-22-24 with a heifer calf



Lot **171** **TA DOMINETTE 0322H**  
 BD: 1/17/20 Reg No: 44173016 Tattoo: 0322

Sire: EFBEEF X651 TESTED A250

KB L1 DOMINO 504C ET  
 TA L1 DOMINETTE 849F  
 Dam TA L1 DOMINETTE 650D

HH ADVANCE 2005Z  
 CL 1 DOMINETTE 7136T 1ET  
 CL 1 DOMINO 2121Z  
 MONTANA MISS 282Z

CED	BW	WW	YW	Milk	M&G	SC	REA	Marb	CHB
+5.4	+2.1	+58	+88	+29	+58	+1.2	+0.28	+0.41	+132

- **SALE FEATURE**
- 0322 is a dark red Tested daughter out of a top class female, 849.
- She has exceptional docility.
- Bred to Highland 1403; Due 1-30-24



**PYRAMID HIGHLAND 1403**  
 REG: 44360107 SERVICE SIRE TO MANY BRED COWS SELLING

Lot **172** **TA L1 DOMINETTE 0332H**  
 BD: 1/20/20 Reg No: 44173031 Tattoo: 0332

Sire: CL 1 DOMINO 6104D

CL 1 DOMINO 2121Z  
 TA L1 DOMINETTE 630D  
 Dam MONTANA MISS 3133 A

CL 1 DOMINO 9122W 1ET  
 CL 1 DOMINETTE 924W 1ET  
 HH ADVANCE 1207Y  
 MONTANA MISS 119Y

CED	BW	WW	YW	Milk	M&G	SC	REA	Marb	CHB
+1.1	+2.7	+50	+89	+36	+61	+1.1	+0.21	+0.19	+123

- 0332 has earned a weaning ratio of 2 at 102.
- Bred to Highland 1403; Due 2-13-24



# COMPLETE HEREFORD DISPERSION HEREFORD BRED COWS

**Lot 173** **TA DOMINETTE 0335H**  
 BD: 1/21/20 Reg No: 44180295 Tattoo: 0335

**Sire: BEHM 100W CUDA 504C**

CL 1 DOMINO 269Z 1ET  
**TA L1 DOMINETTE 860F**  
 Dam MONTANA MISS 3133 A

CL 1 DOMINO 860U  
 CL 1 DOMINETTE 759T 1ET  
 HH ADVANCE 1207Y  
 MONTANA MISS 119Y

CED	BW	WW	YW	Milk	M&G	SC	REA	Marb	CHB
+5.1	+1.9	+63	+102	+37	+68	+1.2	+0.40	+0.24	+131

- 0335 is a great uddered 504 daughter.
- She is level as a board on her top line and has earned a nursing ratio of 110 on her first 2 calves.
- Bred to Highland 1403; Due 3-2-24



SON OF LOT 173

**Lot 174** **TA DOMINETTE 0346H**  
 BD: 1/29/20 Reg No: 44180286 Tattoo: 0346

**Sire: UPS SENSATION 2504 ET**

KB L1 DOMINO 504C ET  
**TA L1 DOMINETTE 833F**  
 Dam MONTANA MISS 207 Z

HH ADVANCE 2005Z  
 CL 1 DOMINETTE 7136T 1ET  
 CL 1 DOMINO 0100X  
 MONTANA MISS 740T

CED	BW	WW	YW	Milk	M&G	SC	REA	Marb	CHB
+5.4	+1.0	+46	+80	+33	+56	+1.1	+0.38	+0.06	+107

- 0346 is a moderate Sensation daughter with calving ease and top tier maternal EPDs.
- Bred to Highland 1403; Due 1-6-24 with a bull calf



**View Sale Videos here**



**Lot 175** **TA DOMINETTE 0349H**  
 BD: 1/30/20 Reg No: 44180284 Tattoo: 0349

**Sire: UPS SENSATION 2504 ET**

CL 1 DOMINO 4168B 1ET  
**TA L1 DOMINETTE 841F**  
 Dam TA L1 DOMINETTE 527C

CL 1 DOMINO 216Z 1ET  
 CL 1 DOMINETTE 7136T 1ET  
 CL 1 DOMINO 2121Z  
 KB L1 DOMINETTE 1200Y

CED	BW	WW	YW	Milk	M&G	SC	REA	Marb	CHB
-3.0	+2.5	+60	+95	+38	+68	+1.3	+0.49	+0.05	+113

- **SALE FEATURE**
- This Sensation daughter offers loads of red with a speckled face, exceptional phenotype with a great udder.
- Loads of style here.
- Bred to Highland 1403; Due 1-6-24 with a heifer calf

**Lot 176** **TA DOMINETTE 0351H**  
 BD: 1/31/20 Reg No: 44180268 Tattoo: 3051

**Sire: BEHM 100W CUDA 504C**

CL 1 DOMINO 269Z 1ET  
**TA L1 DOMINETTE 867F**  
 Dam KB L1 DOMINETTE 3159 A

CL 1 DOMINO 860U  
 CL 1 DOMINETTE 759T 1ET  
 KB L1 DOMINO 121Y  
 L1 DOMINETTE 4136P

CED	BW	WW	YW	Milk	M&G	SC	REA	Marb	CHB
+6.5	+1.3	+54	+91	+32	+59	+1.0	+0.36	+0.23	+129

- 0351 is a high capacity 504 daughter that will be a steady producer in her future herd.
- Bred to Highland 1403; Due 1-6-24 with a heifer calf

**Lot 177** **TA L1 DOMINETTE 0357H ET**  
 BD: 3/8/20 Reg No: 44173210 Tattoo: 0357

**Sire: CL 1 DOMINO 6104D**

HH ADVANCE 1207Y  
**KB L1 DOMINETTE 376 A**  
 Dam KB L1 DOMINETTE 167Y

HH ADVANCE 7034T ET  
 HH MISS ADVANCE 6054S  
 CL 1 DOMINO 795T 1ET  
 KB L1 DOMINETTE 6136

CED	BW	WW	YW	Milk	M&G	SC	REA	Marb	CHB
+0.5	+2.9	+48	+88	+33	+56	+0.9	+0.19	+0.08	+111

- 0357 is an ET daughter out of the cornerstone donor dam 376.
- She ranks in the top 15% for MM
- Bred to Highland 1403; Due 4-30-24

# HEREFORD BRED COWS



**CL1 DOMINO 6104**  
SIRE TO MANY FEMALES SELLING

Lot **178** **TA L1 DOMINETTE 922G**  
BD: 1/18/19 Reg No: 44062134 Tattoo: 922G

Sire: CL 1 DOMINO 6104D

— KB L1 DOMINO 406B  
TA L1 DOMINETTE 729E  
Dam — TA L1 DOMINETTE 516C

HH ADVANCE 1038Y ET  
KB 11 DOMINETTE 195Y  
KB L1 DOMINO 1202Y  
KB L1 DOMINETTE 376 A

CED	BW	WW	YW	Milk	M&G	SC	REA	Marb	CHB
+3.5	+1.8	+48	+84	+41	+65	+0.8	+0.27	+0.08	+112

- 922 is one of the top producing females at weaning time.
- She has a nursing ratio of 3 at 112.
- Bred to Uproar 946; Due 1-5-24 with a heifer calf



Lot **179** **TA L1 DOMINETTE 821F**  
BD: 1/18/18 Reg No: 43966466 Tattoo: 821F

Sire: CL 1 DOMINO 215Z

— KB L1 DOMINO 1202Y  
TA L1 DOMINETTE 516C  
Dam — KB L1 DOMINETTE 376 A

CL 1 DOMINO 7110T  
KB L1 DOMINETTE 647  
HH ADVANCE 1207Y  
KB L1 DOMINETTE 167Y

CED	BW	WW	YW	Milk	M&G	SC	REA	Marb	CHB
+3.1	+3.2	+67	+108	+30	+64	+0.7	+0.34	+0.18	+143

- 821 is one of the deepest bodied females that you will find anywhere.
- She has exceptional performance and has an excellent EPD profile.
- Bred to Uproar 946; Due 1-9-24 with a heifer calf



Lot **180** **TA L1 DOMINETTE 830F**  
BD: 1/21/18 Reg No: 43966458 Tattoo: 830F

Sire: BEHM 100W CUDA 504C

— CL 1 DOMINO 2121Z  
TA L1 DOMINETTE 625D  
Dam — KB L1 DOMINETTE 3157 A

CL 1 DOMINO 9122W 1ET  
CL 1 DOMINETTE 924W 1ET  
HH ADVANCE 1207Y  
KB L1 DOMINETTE 1196Y

CED	BW	WW	YW	Milk	M&G	SC	REA	Marb	CHB
+4.3	+3.2	+57	+88	+33	+61	+1.1	+0.29	+0.20	+115

- 830 is a highly productive 504C daughter.
- She has earned an outstanding nursing ratio of 108 on her 4 calves.
- Bred to Uproar 946; Due 1-9-24



**BEHM 100W CUDA 504C**  
SIRE OF LOTS 180-183

Lot **181** **TA L1 DOMINETTE 833F**  
BD: 1/23/18 Reg No: 43963913 Tattoo: 833F

Sire: BEHM 100W CUDA 504C

— CL 1 DOMINO 0100X  
MONTANA MISS 207 Z  
Dam — MONTANA MISS 740T

CL 1 DOMINO 860U  
CL 1 DOMINETTE 193L  
CL 1 DOMINO 9126J 1ET  
MONTANA MISS 756

CED	BW	WW	YW	Milk	M&G	SC	REA	Marb	CHB
+1.0	+3.5	+50	+83	+31	+56	+1.0	+0.28	+0.12	+111

- 833 comes from the great 207Z cow and is already following suit with her highly productive history.
- She has a nursing ratio of 102 on her 4 calves.
- Bred to Uproar 946; Due 1-8-24 with a heifer calf



# HEREFORD BRED COWS



Lot **182** **TA L1 DOMINETTE 842F**  
 BD: 1/24/18 Reg No: 43966455 Tattoo: 842F

Sire: BEHM 100W CUDA 504C

CL 1 DOMINO 2121Z  
 MONTANA MISS TA 522C  
 Dam MONTANA MISS 137Y

CL 1 DOMINO 9122W 1ET  
 CL 1 DOMINETTE 924W 1ET  
 KB L1 DOMINO 826U  
 MONTANA MISS 5134R

CED	BW	WW	YW	Milk	M&G	SC	REA	Marb	CHB
+8.2	+0.6	+46	+71	+29	+52	+0.7	+0.23	+0.24	+119

- 842 has a great udder and is highly maternal.
- Bred to Uproar 946; Due 1-9-24

Lot **183** **TA L1 DOMINETTE 858F**  
 BD: 2/5/18 Reg No: 43963914 Tattoo: 858F

Sire: BEHM 100W CUDA 504C

KB L1 DOMINO 0102X  
 TA L1 DOMINETTE 655D  
 Dam MONTANA MISS 208Z

CL 1 DOMINO 592R 1ET  
 KB L1 DOMINETTE 616  
 CL 1 DOMINO 849U  
 MONTANA MISS 0147X

CED	BW	WW	YW	Milk	M&G	SC	REA	Marb	CHB
+2.2	+3.5	+46	+72	+30	+53	+0.9	+0.19	+0.17	+110

- 858 is well colored and has second to none mothering ability at calving time.
- 858 has a nursing ratio of 4 at 110.
- Bred to Highland 1403; Due 3-6-24



SON OF LOT 182



DAUGHTER OF LOT 184



Lot **184** **TA L1 DOMINETTE 704E**  
 BD: 1/13/17 Reg No: 43808745 Tattoo: 704E

Sire: CL 1 DOMINO 2121Z

HH ADVANCE 6001S  
 KB L1 DOMINETTE 1200Y  
 Dam KB L1 DOMINETTE 678

CL 1 DOMINO 206M  
 HH MISS ADVANCE 1088L  
 KB L1 DOMINO 450P  
 KB MISS CENTURION 283

CED	BW	WW	YW	Milk	M&G	SC	REA	Marb	CHB
-1.6	+3.7	+55	+81	+37	+65	+1.5	+0.25	+0.28	+128

- **SALE FEATURE**
- Hands down one of the very finest females in the offering.
- She has a perfect udder and will certainly catch your eye in the pen.
- 704 had produced some of the very finest replacement females.
- She has earned a nursing ratio of 107 on her 6 calves.
- Bred to Uproar 946; Due 1-6-24 with a bull calf



Lot **185** **TA L1 DOMINETTE 755E**  
 BD: 2/15/17 Reg No: 43808818 Tattoo: 755E

Sire: CL 1 DOMINO 269Z 1ET

KB L1 DOMINO 615Z  
 KB L1 DOMINETTE 278Z  
 Dam KB L1 DOMINETTE 601

KB L1 DOMINO 218  
 L1 DOMINETTE 4136P  
 KB L1 DOMINO 454P  
 KB L1 DOMINETTE 423P

CED	BW	WW	YW	Milk	M&G	SC	REA	Marb	CHB
+4.1	+1.0	+39	+74	+24	+44	+0.8	+0.26	-0.13	+82

- 755 offers natural thickness with great look and style.
- Bred to Highland 1403; Due 1-5-24 with a bull calf



# COMPLETE HEREFORD DISPERSION HEREFORD BRED COWS



**KB L1 DOMINO 0102**  
SIRE TO MANY FEMALES SELLING

Lot **186** **TA L1 DOMINETTE 760E**  
BD: 2/17/17 Reg No: 43808827 Tattoo: 760E

Sire: HH ADVANCE 4344B

HH ADVANCE 2036Z ET  
MONTANA MISS TA 507C  
Dam MONTANA MISS 108Y

HH ADVANCE 8050U ET  
HH MISS ADVANCE 8163U  
KB L1 DOMINO 842U  
MONTANA MISS 8107U

CED	BW	WW	YW	Milk	M&G	SC	REA	Marb	CHB
+5.1	+1.9	+49	+70	+31	+55	+0.8	+0.33	+0.12	+115

- 760 is a deep bodied 4344 daughter.
- She has produced some of the very top bulls in years passed.
- She has earned a nursing ratio of 102 on her 5 calves.
- Bred to Highland 1403; Due 2-12-24



Lot **187** **TA L1 DOMINETTE 624D**  
BD: 2/16/16 Reg No: 43672461 Tattoo: 624D

Sire: KB L1 DOMINO 0102X

CL 1 DOMINO 9126J 1ET  
KB L1 DOMINETTE 656  
Dam KB L1 DOMINETTE 353 ET

HH ADVANCE 767G 1ET  
CL 1 DOMINETTE 490  
/S MISTER MOM 7745  
SH MISS ADVANCER 721

CED	BW	WW	YW	Milk	M&G	SC	REA	Marb	CHB
+7.1	+1.3	+32	+56	+31	+47	+1.1	+0.12	+0.10	+106

- **SALE FEATURE**
- 624 is an ideal Hereford cow with a great udder, natural thickness and is long bodied.
- She has earned a nursing ratio of 106 on her 6 natural calves.
- Bred to Uproar 946; Due 1-4-24 with a heifer calf



Lot **188** **MONTANA MISS TA 522C**  
BD: 2/5/15 Reg No: 43613004 Tattoo: 522C

Sire: CL 1 DOMINO 2121Z

KB L1 DOMINO 826U  
MONTANA MISS 137Y  
Dam MONTANA MISS 5134R

KB L1 DOMINO 218  
KB L1 DOMINETTE 636  
KB L1 DOMINO 383 ET  
MONTANA MISS 061

CED	BW	WW	YW	Milk	M&G	SC	REA	Marb	CHB
-3.1	+4.3	+58	+94	+26	+55	+1.1	+0.33	+0.26	+133

- 522 is an extra thick 2121 daughter that offers exceptional breed character.
- Bred to Highland 1403; Due 1-30-24



SON OF LOT 188

**View Sale  
Videos here**





# COMPLETE HEREFORD DISPERSION HEREFORD MAY BORN PAIRS

**Lot 189** **TA L1 DOMINETTE 523C**  
 BD: 2/6/15 Reg No: 43618897 Tattoo: 523C

Sire: CL 1 DOMINO 2121Z

KB L1 DOMINO 6152  
 KB L1 DOMINETTE 267 Z  
 Dam KB L1 DOMINETTE 633

KB L1 DOMINO 218  
 L1 DOMINETTE 4136P  
 CL1 DOMINO 180L  
 KB AMY 1158

CED	BW	WW	YW	Milk	M&G	SC	REA	Marb	CHB
-6.6	+5.5	+54	+90	+21	+48	+1.1	+0.22	+0.03	+105

- 523 is a great uddered 2121 daughter that is one of the very top producing females with a nursing ratio of 108 on her 8 calves.
- She ranks in the top 10% for teet.
- Bred to Highland 1403; Due 4-29-24



SON OF LOT 182

**Lot 190** **TA L1 DOMINETTE 101J**  
 BD: 12/20/20 Reg No: 44410942 Tattoo: 101

Sire: KB L1 DOMINO 5104B

KB L1 DOMINO 406B  
 TA L1 DOMINETTE 750E  
 Dam MONTANA MISS TA 518C

HH ADVANCE 1038Y ET  
 KB 11 DOMINETTE 195Y  
 CL 1 DOMINO 2215Z 1ET  
 MONTANA MISS 208Z

CED	BW	WW	YW	Milk	M&G	SC	REA	Marb	CHB
+3.5	+3.5	+58	+87	+25	+54	+1.1	+0.24	+0.09	+104

- 101 is out of a powerful and deep bodied dam, 750E.
- Full sister to 102.
- Bred to Highland 1403; Due 5-2-24



**Lot 190a** **TA DOMINO 355**  
 BD: 5/7/23 Reg No: 44502652 Tattoo: 355

Sire: KB L1 DOMINO 623D 1ET

KB L1 DOMINO 5104B  
 TA L1 DOMINETTE 101J  
 Dam TA L1 DOMINETTE 750E

HH ADVANCE 1207Y  
 MONTANA MISS 740T  
 KB L1 DOMINO 406B  
 MONTANA MISS TA 518C

CED	BW	WW	YW	Milk	M&G	SC	REA	Marb	CHB
+3.5	+2.9	+55	+87	+28	+56	+1.0	+0.22	+0.18	+121

- May born bull calf

**Lot 191** **TA DOMINO 356**  
 BD: 5/7/23 Reg No: 44497708 Tattoo: 356

Sire: BCC UPROAR 946G

HH ADVANCE 2158Z  
 TA L1 DOMINETTE 934G  
 Dam MONTANA MISS 208Z

L1 DOMINO 08469  
 HH MISS ADVANCE 6188S  
 CL 1 DOMINO 849U  
 MONTANA MISS 0147X

CED	BW	WW	YW	Milk	M&G	SC	REA	Marb	CHB
+0.2	+3.3	+54	+91	+24	+51	+1.1	+0.45	+0.11	+111

- **SALE FEATURE**
- He offers perfect color and pigment.
- Red all the way to the head and down to the ground.
- He is thick topped and will make an exceptional herd bull.
- May born bull calf



# HEREFORD MAY BORN PAIRS

Lot **TA L1 DOMINETTE 103J**  
**192** BD: 12/26/20 Reg No: 44277583 Tattoo: 103

Sire: KB L1 DOMINO 5104B

CL 1 DOMINO 2121Z  
 TA L1 DOMINETTE 704E  
 Dam KB L1 DOMINETTE 1200Y

CL 1 DOMINO 9122W 1ET  
 CL 1 DOMINETTE 924W 1ET  
 HH ADVANCE 6001S  
 KB L1 DOMINETTE 678

CED	BW	WW	YW	Milk	M&G	SC	REA	Marb	CHB
+2.6	+2.9	+56	+81	+28	+56	+1.4	+0.21	+0.15	+107

- **SALE FEATURE**
- 103 is a long bodied, deep ribbed 5104 daughter with a perfect udder.
- We are very excited about this young females future.
- She ranks in the top 30% of the breed for DMI, Teet and Marb.
- Bred to Highland 1403; Due 4-27-24



Lot **TA DOMINO 354**  
**192a** BD: 5/7/23 Reg No: 44497702 Tattoo: 354

Sire: KB L1 DOMINO 623D 1ET

KB L1 DOMINO 5104B  
 TA L1 DOMINETTE 103J  
 Dam TA L1 DOMINETTE 704E

HH ADVANCE 1207Y  
 MONTANA MISS 740T  
 CL 1 DOMINO 2121Z  
 KB L1 DOMINETTE 1200Y

CED	BW	WW	YW	Milk	M&G	SC	REA	Marb	CHB
+2.1	+2.9	+55	+85	+30	+57	+1.2	+0.20	+0.20	+124

- May born bull calf

Lot **TA DOMINETTE 116J**  
**193** BD: 1/14/21 Reg No: 44278360 Tattoo: 116

Sire: BCC UPROAR 946G

CL 1 DOMINO 215Z  
 TA L1 DOMINETTE 912G  
 Dam TA L1 DOMINETTE 523C

CL 1 DOMINO 9122W 1ET  
 CL 1 DOMINETTE 055X  
 CL 1 DOMINO 2121Z  
 KB L1 DOMINETTE 267 Z

CED	BW	WW	YW	Milk	M&G	SC	REA	Marb	CHB
-2.3	+3.6	+63	+103	+24	+55	+1.1	+0.55	+0.19	+132

- 116 offers exceptional performance.
- She ranks in the top 20% of the breed for WW, YW and CHB, and the top 7% for CW.
- Bred to Highland 1403; Due 4-20-24

Lot **TA DOMINO 357**  
**193a** BD: 5/8/23 Reg No: 44497709 Tattoo: 357

Sire: KB L1 DOMINO 623D 1ET

BCC UPROAR 946G  
 TA DOMINETTE 116J  
 Dam TA L1 DOMINETTE 912G

HAROLDSON'S UPGRADE T100 33D  
 BCC SCARLET 403B  
 CL 1 DOMINO 215Z  
 TA L1 DOMINETTE 523C

CED	BW	WW	YW	Milk	M&G	SC	REA	Marb	CHB
-0.1	+3.4	+59	+96	+28	+57	+1.0	+0.37	+0.21	+134

- May born bull calf



Lot **TA L1 DOMINETTE 923G**  
**194** BD: 1/19/19 Reg No: 44063166 Tattoo: 923G

Sire: KB L1 DOMINO 623D 1ET

CL 1 DOMINO 269Z 1ET  
 TA L1 DOMINETTE 669D  
 Dam KB L1 DOMINETTE 803U

CL 1 DOMINO 860U  
 CL 1 DOMINETTE 759T 1ET  
 JA L1 DOMINO 6002S  
 KB L1 DOMINETTE 622

CED	BW	WW	YW	Milk	M&G	SC	REA	Marb	CHB
+3.5	+0.7	+36	+62	+23	+41	+0.9	+0.06	+0.15	+112

- 923 is a moderate and well made 623 daughter.
- She is a great female producer.
- Bred to Highland 1403; Due 4-20-24

Lot **TA DOMINETTE 358**  
**194a** BD: 5/8/23 Reg No: 44497710 Tattoo: 358

Sire: BCC UPROAR 946G

KB L1 DOMINO 623D 1ET  
 TA L1 DOMINETTE 923G  
 Dam TA L1 DOMINETTE 669D

CL 1 DOMINO 215Z  
 HH MISS ADVANCE 1072Y ET  
 CL 1 DOMINO 269Z 1ET  
 KB L1 DOMINETTE 803U

CED	BW	WW	YW	Milk	M&G	SC	REA	Marb	CHB
+1.6	+2.0	+48	+81	+21	+45	+0.9	+0.41	+0.13	+118

- May born heifer calf



# HEREFORD FALL PAIRS

Lot **195** **KB L1 DOMINETTE 376 A**  
 BD: 1/30/13 Reg No: 43369700 Tattoo: 376A

Sire: HH ADVANCE 1207Y

CL 1 DOMINO 795T 1ET  
 KB L1 DOMINETTE 167Y  
 Dam KB L1 DOMINETTE 6136

CL 1 DOMINO 477P  
 CL 1 DOMINETTE 258M  
 KB L1 DOMINO 218  
 KB L1 DOMINETTE 582

CED	BW	WW	YW	Milk	M&G	SC	REA	Marb	CHB
-2.5	+5.9	+59	+96	+24	+53	+1.3	+0.39	+0.01	+108

- **SALE FEATURE**
- Cornerstone donor cow
- She has produced upwards to twenty daughters and granddaughters.
- She is great footed and has a perfect udder.
- Sells with 5 embryos sired by 6104 and 6 embryos sired by Uproar 946.
- Sells with a Highland bull calf at side.
- Sells exposed to Highland from 11-6 to 12-6.



Lot **195a** **TA HIGHLAND 364**  
 BD: 9/16/23 Reg No: 44502657 Tattoo: 364

Sire: PYRAMID HIGHLAND 1403

HH ADVANCE 1207Y  
 KB L1 DOMINETTE 376 A  
 Dam KB L1 DOMINETTE 167Y

HH ADVANCE 7034T ET  
 HH MISS ADVANCE 6054S  
 CL 1 DOMINO 795T 1ET  
 KB L1 DOMINETTE 6136

CED	BW	WW	YW	Milk	M&G	SC	REA	Marb	CHB
+3.7	+3.8	+61	+97	+25	+56	+1.3	+0.47	+0.06	+121

- September born bull calf



SON OF LOT 196

Lot **196** **TA L1 DOMINETTE 9100G**  
 BD: 8/21/19 Reg No: 44278892 Tattoo: 9100

Sire: KB L1 DOMINO 623D 1ET

HH ADVANCE 9027W  
 MONTANA MISS 1102Y ET  
 Dam MONTANA MISS 310

L1 DOMINO 03571  
 HH MISS ADVANCE 6074S  
 CL 1 DOMINO 484  
 MONTANA MISS 837

CED	BW	WW	YW	Milk	M&G	SC	REA	Marb	CHB
+5.5	+2.3	+50	+81	+31	+56	+0.9	+0.11	+0.14	+110

- 9100 has earned a weaning ratio of 103 on her 3 calves.
- Sells exposed to Highland from 11-6 to 12-6.



Lot **196a** **TA DOMINETTE 361**  
 BD: 7/31/23 Reg No: 44502654 Tattoo: 361

Sire: BCC UPROAR 946G

KB L1 DOMINO 623D 1ET  
 TA L1 DOMINETTE 9100G  
 Dam MONTANA MISS 1102Y ET

CL 1 DOMINO 215Z  
 HH MISS ADVANCE 1072Y ET  
 HH ADVANCE 9027W  
 MONTANA MISS 310

CED	BW	WW	YW	Milk	M&G	SC	REA	Marb	CHB
+2.6	+2.8	+55	+91	+25	+53	+1.0	+0.29	+0.12	+106

- July born heifer calf



PYRAMID HIGHLAND 1403  
 SERVICE SIRE TO FALL CALVING COWS

# COMPLETE HEREFORD DISPERSION HEREFORD FALL PAIRS

**Lot** **TA L1 DOMINETTE 903G**  
**197** BD: 1/7/19 Reg No: 44062148 Tattoo: 903G

**Sire:** HH ADVANCE 6009D ET

CL 1 DOMINO 2121Z  
TA L1 DOMINETTE 630D  
Dam MONTANA MISS 3133 A

CL 1 DOMINO 9122W 1ET  
CL 1 DOMINETTE 924W 1ET  
HH ADVANCE 1207Y  
MONTANA MISS 119Y

CED	BW	WW	YW	Milk	M&G	SC	REA	Marb	CHB
-0.7	+4.1	+57	+94	+26	+54	+1.2	+0.24	+0.03	+100

- 903 is a perfect uddered and good footed cow that weans off a top end calf every year.
- Sells exposed to Highland from 11-6 to 12-6.



**Lot** **TA UPROAR 365**  
**197a** BD: 9/19/23 Reg No: 44502658 Tattoo: 365

**Sire:** BCC UPROAR 946G

HH ADVANCE 6009D ET  
TA L1 DOMINETTE 903G  
Dam TA L1 DOMINETTE 630D

HH ADVANCE 4105B ET  
HH MISS ADVANCE 1175Y ET  
CL 1 DOMINO 2121Z  
MONTANA MISS 3133 A

CED	BW	WW	YW	Milk	M&G	SC	REA	Marb	CHB
-0.5	+3.7	+58	+97	+23	+52	+1.1	+0.36	+0.07	+101

- September born bull calf



**Lot** **TA MISS 0100H**  
**198** BD: 9/7/20 Reg No: 44410949 Tattoo: 100

**Sire:** KB L1 DOMINO 5104B

HH ADVANCE 9027W  
MONTANA MISS 1102Y ET  
Dam MONTANA MISS 310

L1 DOMINO 03571  
HH MISS ADVANCE 6074S  
CL 1 DOMINO 484  
MONTANA MISS 837

CED	BW	WW	YW	Milk	M&G	SC	REA	Marb	CHB
+7.0	+2.4	+48	+75	+23	+48	+1.0	+0.11	+0.05	+94

- 0100 is a direct daughter of 5104 and is a daughter of the donor dam 1102.
- She offers exceptional maternal and calving ease.
- Sells with a heifer calf at side.
- Sells exposed to Highland from 11-6 to 12-6.

**Lot** **TA DOMINETTE 362**  
**198a** BD: 8/4/23 Reg No: 44502655 Tattoo: 362

**Sire:** BCC UPROAR 946G

KB L1 DOMINO 5104B  
TA MISS 0100H  
Dam MONTANA MISS 1102Y ET

HH ADVANCE 1207Y  
MONTANA MISS 740T  
HH ADVANCE 9027W  
MONTANA MISS 310

CED	BW	WW	YW	Milk	M&G	SC	REA	Marb	CHB
+3.4	+2.9	+54	+88	+21	+48	+1.0	+0.29	+0.08	+98

- August born heifer calf

**Lot** **TA L1 DOMINETTE 0102H ET**  
**199** BD: 9/8/20 Reg No: 44277557 Tattoo: 0102

**Sire:** CL 1 DOMINO 6104D

HH ADVANCE 1207Y  
KB L1 DOMINETTE 376 A  
Dam KB L1 DOMINETTE 167Y

HH ADVANCE 7034T ET  
HH MISS ADVANCE 6054S  
CL 1 DOMINO 795T 1ET  
KB L1 DOMINETTE 6136

CED	BW	WW	YW	Milk	M&G	SC	REA	Marb	CHB
+1.3	+2.9	+50	+86	+36	+61	+0.9	+0.22	+0.08	+111

- 0102 is a direct daughter of the 376 donor cow.
- She ranks in the top 5% for MM.
- She sells with a heifer calf at side.
- Sells exposed to Highland from 11-6 to 12-6.

**Lot** **TA DOMINETTE 363**  
**199a** BD: 8/18/23 Reg No: 44502656 Tattoo: 363

**Sire:** BCC UPROAR 946G

CL 1 DOMINO 6104D  
TA L1 DOMINETTE 0102H ET  
Dam KB L1 DOMINETTE 376 A

CL 1 DOMINO 4168B 1ET  
CL 1 DOMINETTE 362A  
HH ADVANCE 1207Y  
KB L1 DOMINETTE 167Y

CED	BW	WW	YW	Milk	M&G	SC	REA	Marb	CHB
+0.5	+3.1	+55	+93	+28	+55	+1.0	+0.35	+0.09	+106

- August born heifer calf



# COMMERCIAL BRED HEIFERS

## Lot 200 ANGUS COMMERCIAL OPEN HEIFERS out of 100% Amdahl Genetics

These commercial bred heifers are owned by Amdahl Ranch and were purchased from Bork and Sons Ranch and Orwick Ranch that are fully sired by Amdahl Angus and Hereford bulls. Heifers were AI'd to RRR Grit Reg #20211734 and Huwa Steadfast Reg #20338444. Due to calve 4-5-24 through 5-10-24. After AI these heifers were cleaned up with Grit and Steadfast along with a Black River son. There are approximately 100 of these bred heifers. Updated breeding info will be available sale day.



**Lot A** 10 HEAD X \$  
**Lot B** 10 HEAD X \$  
**Lot C** 10 HEAD X \$  
**Lot D** 10 HEAD X \$

**Lot E** 10 HEAD X \$  
**Lot F** 10 HEAD X \$  
**Lot G** 10 HEAD X \$  
**Lot H** 10 HEAD X \$

**Lot I** 10 HEAD X \$  
**Lot J** 10 HEAD X \$

**HUWA STEADFAST**  
REG #20338444



**RRR GRIT**  
REG #20211734





Lot  
**201 HEREFORD EMBRYOS**

- Lot A** MISS MONTANA 1102 X CL1 DOMINO 386 – 2 EMBRYOS  
**Lot B** MISS MONTANA 1102 X CL1 DOMINO 412 – 3 EMBRYOS  
**Lot C** KB L1 DOMINETTE 243 X CL1 DOMINO 2121 – 2 EMBRYOS  
**Lot D** KB L1 DOMINETTE 525 X HH ADVANCE P4067 – 1 EMBRYO  
**Lot E** KB L1 DOMINETTE 243 X GE L1 DOMINO 175 – 2 EMBRYOS

Lot  
**202 HEREFORD SEMEN**

- Lot A** BCC UPROAR 946 – 180 STRAWS  
**Lot B** KB L1 DOMINO 623 – 64 STRAWS  
**Lot C** CL1 DOMINO 6104 – 40 STRAWS  
**Lot D** KB L1 DOMINO 5104 – 28 STRAWS  
**Lot E** HH ADVANCE 7074 – 20 STRAWS  
**Lot F** HH ADVANCE 2036 – 9 STRAWS

**BCC UPROAR 946**  
REG #44054179



**KB L1 DOMINO 623**  
REG #43675659



**CL1 DOMINO 6104**  
REG #43691785



**KB L1 DOMINO 5104**  
REG #43526961







## **BLACK RIVER 093** REG #19799437

- Black River is truly a phenotype powerhouse.
- He has exceptional feet and is a breeding piece to improve any herd.
- He earned a 205 day weight of 864lbs and a yearling weight of 1429lbs.
- He is in the top 5% in WW and YW.
- +31 on milk power.
- Top 10% on claw and angle foot scores.
- Semen is available through Amdahl Ranch.

DAM TO  
BLACK RIVER



## **HUWA STEADFAST** REG #20338444

- \$29,000 sale topper at the 2023 Huwa Angus Sale.
- Steadfast checks all the EPD boxes and most importantly has second to none depth of body and maternal power.
- He offers an outcross pedigree to many herds.
- He is heifer bull safe, ranking in the top 1% of the breed for CED.
- To order semen, contact CK6 Source.

DAM TO  
STEADFAST



**NL**  
**NutraLix** Inc.  
The Brand of Quality

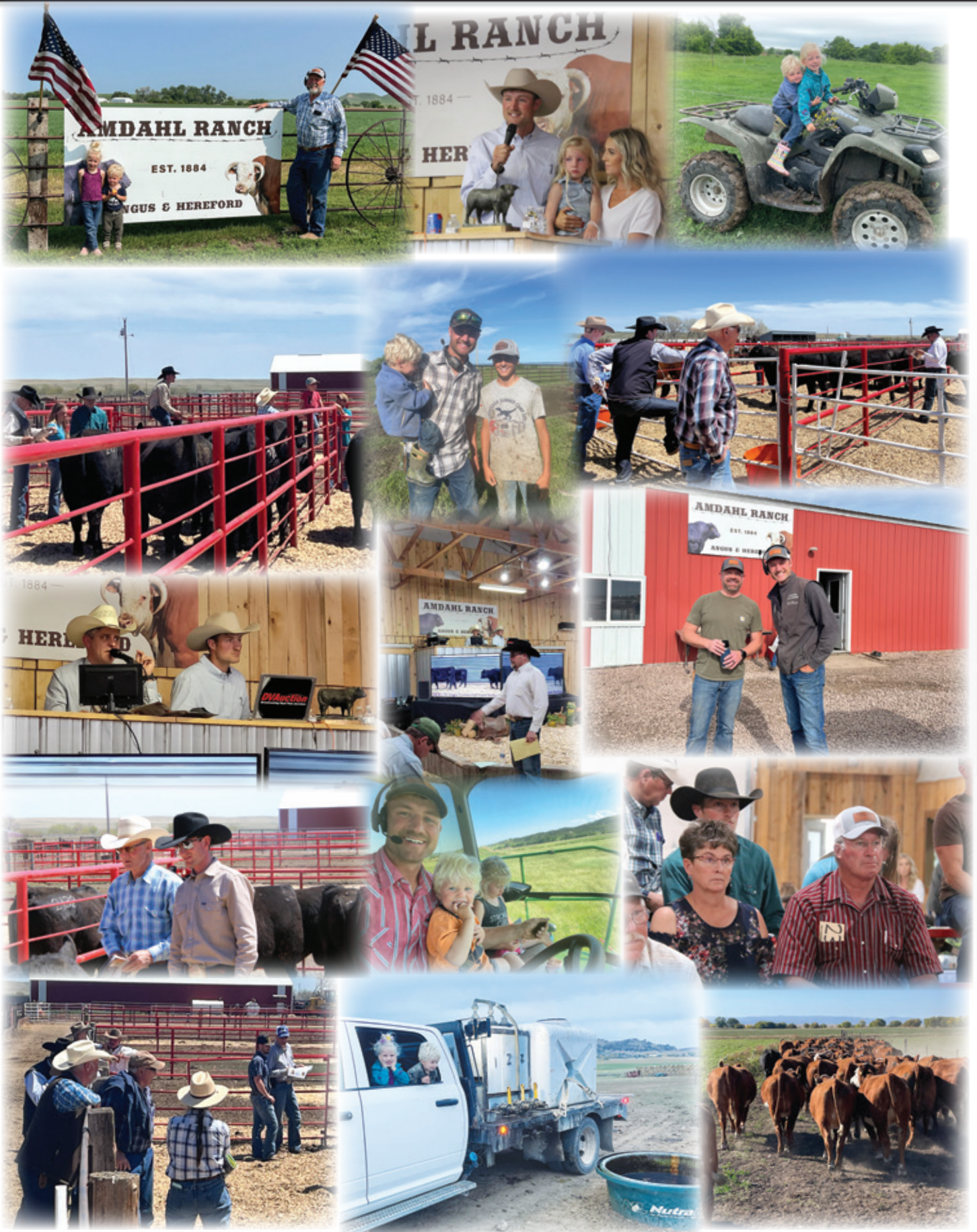
# Welcome Cattlemen!

Nutra-lix, Inc. is proud to partner with Amdahl Angus & Hereford as we bring superior quality supplements paired with their superior quality genetics. Congratulations to this year's buyers!

**800.568.6952**    *It's at Home on Your Range!*    **www.NutraLix.com**



# COMPLETE HEREFORD DISPERSION







21747 Coyote Lane  
Piedmont, SD 57769

PRESORTED  
FIRST CLASS  
U.S. POSTAGE  
**PAID**  
PERMIT NO. 618  
RAPID CITY, SD

Address Service Requested

**Thursday,  
December 7, 2023**

**12:04 p.m. MST**

at the ranch, North of Rapid City, SD

**Complete Hereford Dispersion**

**Annual Production Sale**

**300 HEAD SELL!!**

## Selling:

### ANGUS

- ◆ 70 ANGUS BULLS
- ◆ 1 ANGUS DONOR COW
- ◆ 6 ANGUS OPEN HEIFERS
- ◆ 8 ANGUS BRED FEMALES
- ◆ 100 COMMERCIAL BRED ANGUS HEIFERS AI'D TO STEADFAST AND GRIT

### HEREFORDS

- ◆ 28 HEREFORD BULLS
- ◆ 22 HEREFORD OPEN HEIFERS
- ◆ 50 SPRING BRED HEREFORD COWS
- ◆ 5 HEREFORD FALL PAIRS
- ◆ 18 HEREFORD BRED HEIFERS
- ◆ ALL HEREFORD SEMEN & EMBRYOS SELL