



EHLKE HEREFORDS

TOWNSEND • MONTANA



2024 PRIVATE TREATY
BULL SALE

PRIVATE TREATY FOR YOUR CONVENIENCE





TOWNSEND • MONTANA

The Ehlke Advantage

In striving to attract progressive commercial operations to consider our genetics, we hope to establish a particular perception and image that we intend to be synonymous with Ehlke Herefords. Bulls from Ehlke Herefords should be expected to share several criteria, including:

- Being docile, sound, muscular, big bodied and attractive
- Dams with high quality udders, desirable body capacity, muscle, structural integrity, youthfulness and maternal character
- Strong multi trait EPD profiles
- Ultrasound carcass data collected and applied in selection on bulls and replacement females
- Records of calving ease, birth, weaning and yearling weights, scrotal, udder scores, ultrasound backfat, ribeye and intramuscular fat for each eligible animal in the herd

Mark Ehlke 406-439-4311
Jane'a Merkel 406-202-2766

Lacey Jepson 406-439-1544
info@ehlkeherefords.com

Sale videos and online catalog available at
www.ehlkeherefords.com






HEREFORD
Learn more at
herefordtruth.com

THE BALD-FACED TRUTH
ABOUT HEREFORD GENETICS

7% Higher pregnancy rates	\$51 More per cow, per year	
\$30 Advantage in feedlot profitability	\$20 Advantage in feed efficiency	

Hereford genetics maximize the value of your herd by leveraging traits such as fertility, feed efficiency, docility and feedlot profitability to your advantage.

*Compared to Angus-sired calves. Source: Daley, David A., and Emily, Sean P. "Impacts of Crossbreeding on Profitability in Profitably Crossbred Beef Industry Marketing Systems." American Hereford Association. Retrieved from <https://hereford.org/wp-content/uploads/2017/02/Impacts-on-Profitability.pdf>. 07/20/2016



Pat Reiser, Erin Payne, Andrew Arnold

Thank You

**TO OUR RANCH HELP.
WE COULDN'T DO IT WITHOUT YOU!**



Sale Terms & Conditions

PRIVATE TREATY FOR YOUR CONVENIENCE

Terms of sale will be cash. Individual health papers will be furnished specific to your state requirements.

Bull(s) become the property of the purchaser as soon as sold but it will be the responsibility of the seller to see that animals are properly cared for until delivered to purchaser.

Any death or injury after the animal is sold is at the buyer's risk.

MORTALITY INSURANCE

Devin Murnin, 406-696-1502

CHOOSING YOUR BULLS

Bulls are available for viewing in Townsend with prior arrangements and/or via video. You can choose your bull(s) anytime; they will be held with 20% deposit until bull soundness exam, including semen testing, and ultrasound. Balance is due prior to delivery. In the unlikely event that a bull you picked does not pass the bull soundness exam, your deposit can be applied to another bull(s) or fully refunded to you.

EPDs are current as of catalog printing. Some DNA tests may be in process at catalog printing. EPDs highlighted green indicate the top 10% of the breed for that trait, highlighted orange, indicate top 25% of breed for that trait.

GUARANTEE

All bulls are guaranteed to be able to breed for the first breeding season which is defined as the 60-day period following the first time the bulls are turned out. If an adjustment is required it will be made with a replacement animal of equal value or credit of animal of equal value in our next sale. Salvage value of injured bull will be applied against replacement. No adjustments will be made after (9) months. Customers are encouraged to purchase mortality insurance on your bulls.

PARTIAL RETAINED INTEREST

Ehlke Herefords reserves the right to a semen interest on bulls noted. If you have questions, please contact us.

DELIVERY ARRANGEMENTS

Free Delivery to central points within 500 miles. We will work with you on cost-effective delivery options outside of 500 miles. Delivery Discount – Haul your own, \$150 credit applied to the purchase price. Bull(s) need to be picked up no later than April 15th in order to receive delivery discount credit.

HERD HEALTH

All bulls are in excellent health, have received modified live vaccines at branding, pre and post weaning; have received Multimin 90 and have been treated with Ivermectin Plus. All bulls will be semen tested and measured, and ultrasounded for carcass. Check with us if you would like more detail about vaccinations. Herd Vet - Chuteside Veterinary Hospital, Three Forks, MT.

VOLUME BUYER DISCOUNT

# of Bulls Purchased	2	3	4	5	6	7	8	9	10+
Discount applied to entire purchase	2%	3%	4%	5%	6%	7%	8%	9%	10%

REPEAT BUYER DISCOUNT

Enjoy 2% off your entire purchase if you have bought bulls from Ehlke Herefords in the past.



**VIDEOS OF BULLS AVAILABLE
WWW.EHLKEHEREFORDS.COM**

REFERENCE SIRES



E Z712 SCHATZEE D83

E Z712 SCHATZEE D83 [CHB]

{DLF, HYF, IEF, MSUDF, MDF}



POLLED | DOB: 3/14/16 | AHA#: 43693243

HARVIE LADIES MAN 4L EPHR REAGAL 42R
E 4L SCHATZEE ET Z712 **EPHR LINNETTE 530T**
 HARVIE MS FIREFLY ET 186W EPHR MILLEY 96R

CE	BW	WW	YW	DMI	SC	SCF	Milk	M&G	CEM
-2.5	4.5	71	116	1.1	0.7	16.8	17	52	0.8
MCW	UDDR	TEAT	CW	FAT	REA	Marb	\$BMI	\$BII	\$CHB
125	1.3	1.0	89	0.04	0.72	-0.10	\$351	\$423	\$103

Heavily pigmented Schatzee son whose line bred dam adds to the predictability. D83 passes on his pigment, color and performance and will add ribeye area as well.

PYRAMID 16W 110T 9116

{HYF, MSUDF, DLF, IEF}



POLLED | DOB: 3/26/09 | AHA#: 42989530

SHF MARSHAL 236G M33 FHF 0024 STARBUCK 51M
FHF M33 STARBUCK 110T ET **FHF 51M ACHIEVA 70T**
 FHF 614R NATES LADY 3M FHF 19H ACHIEVA 88K

CE	BW	WW	YW	DMI	SC	SCF	Milk	M&G	CEM
5.0	3.7	55	78	0.2	0.7	19.9	24	52	4.6
MCW	UDDR	TEAT	CW	FAT	REA	Marb	\$BMI	\$BII	\$CHB
92	1.5	1.5	84	0.03	0.47	-0.07	\$392	\$454	\$109

We were fortunate to purchase Iron Lake's interest in this bull. The daughters we have out of 16W are productive, tidy uddered, genetic gems. The 16W sons in this year's offering, led by 2017, are very complete, outcross breeding options. Semen is limited on 16W so offspring offered in the future will be limited.

ILR HOMETOWN 332A ET

{CHB, DLF, HYF, IEF, MSUDF, MDF}



POLLED | DOB: 10/2/13 | AHA#: 43385499

SHF WONDER M326 W18 ET THM DURANGO 4037
NJW 73S W18 HOMETOWN 10Y ET **NJW 43T 4037 FOREVEREDNA 28X ET**
 NJW P606 72N DAYDREAM 73S NJW FOREVER RADIANT 43T ET

CE	BW	WW	YW	DMI	SC	SCF	Milk	M&G	CEM
1.7	2.8	51	101	0.5	0.8	19.7	31	57	-0.6
MCW	UDDR	TEAT	CW	FAT	REA	Marb	\$BMI	\$BII	\$CHB
98	1.1	1.0	74	-0.03	0.59	0.12	\$416	\$485	\$131

We continue to use 332A AI where we can. His influence runs deep in our program due to the predictability of his offspring. Owned with Woolfolk Herefords, McGuffee Polled Herefords and Iron Lake Ranch.

NJW 202C 81E STEWARD 98G ET

{DLF, HYF, IEF, MSUDF, MDF}



HOMOZYGOUS POLLED | DOB: 2/11/19 | AHA#: 44056521

CHURCHILL SENSATION 028X NJW 73S W18 HOMEGROWN 8Y ET
NJW 160B 028X HISTORIC 81E ET **NJW 160Z 8Y HOME MAKER 202C**
 NJW 73S 38W DAYDREAM 160B NJW 73S 88X DAYDREAM 160Z

CE	BW	WW	YW	DMI	SC	SCF	Milk	M&G	CEM
0.0	2.8	59	81	0.3	1.0	20.3	40	69	-4.0
MCW	UDDR	TEAT	CW	FAT	REA	Marb	\$BMI	\$BII	\$CHB
93	1.5	1.5	74	0.01	0.69	0.13	\$433	\$511	\$115

We are thrilled to have been able to add 98G to our program. This guy brings an incredible maternal background into breeding decisions. 98G adds depth and dimension to his progeny. He is homozygous polled and the number profile backing this guy up is also exceptional. Owned with Tudahl Herefords. A 98G daughter was recently Reserve Grand Champion Polled Hereford Female at Agribition.



ILR HOMETOWN 332A ET



NJW 202C 81E STEWARD 98G ET



Gold TPR Breeders The Gold TPR Breeder recognition is presented to progressive Hereford breeders who have measured traits and collected and promptly submitted performance data at all levels of production. Breeders must meet a specific set of requirements in order to be eligible for the program.

- Herd inventory submitted prior to inventory surcharge deadline.
- Complete reporting of calving ease and reproductive status for each dam on inventory.
- Complete reporting of birth, weaning and yearling weights for all live calves recorded in the calf crop.
- Complete reporting of scrotal measurements for each bull calf with a recorded yearling weight.
- Ultrasound data reported on 25% or more of the calf crop

The basic concept of beef cattle performance records is to measure genetic differences between animals for traits of economic importance. The American Hereford Association (AHA) recognizes the importance of performance records in today's beef industry and through Whole Herd Total Performance Records (TPR™), can provide a system flexible enough to meet the needs of the most sophisticated record keeping breeder or those who desire to keep only the basics.

Competition for commercial industry purchasing power between and within breeds is keen, and those breeders who document their seedstock's performance for the commercial man's investment have a distinct advantage in today's beef industry as it moves toward "specification production" from conception to slaughter.

Whole Herd TPR is a system of registration and performance tracking whereby every participating breeder updates his/her cow herd inventory annually. The system is positively endorsed by the Beef Improvement Federation (BIF), a North American umbrella organization of beef breed associations, beef producers, researchers and the academic community.

With this system, the AHA measures economically relevant beef production traits such as fertility, longevity and reproductive efficiency. Furthermore, the greater volume of data reported from each herd for measured growth and carcass traits enhances the accuracy of Hereford expected progeny differences (EPDs).

18 MONTH OLD BULLS

About the Offering

You will notice some comments about a few specific bulls this year that we feel are truly exceptional.

That is not to take away from the rest of our offering. These bulls are the result of many years of selective breeding and genetic improvement. They are all similar in type and kind. Once again, this year, we are including a group of bulls from Tudahl Herefords. Genetically, they stem from our program.



4K

4K

LJE 0001 YELLOWSTONE 4K

POLLED | BD: 8/5/22 | AHA#: 44423080 | Act. BW: 85 lbs.

TH FRONTIER 174E

SR CCC TOP TIER 1414B ET

E 174E YELLOWSTONE 0001 ET LJE 1414 DEBUTANTE 10D

E 332A EDNA D160

HARVIE E MS FIREFLY 74A

CE	BW	WW	YW	DMI	SC	SCF	Milk	M&G	CEM
3.8	1.2	54	83	-0.2	1.2	17.7	35	62	2.1
MCW	UDDR	TEAT	CW	FAT	REA	Marb	\$BMI	\$BII	\$CHB
100	1.2	1.3	69	0.00	0.51	0.01	\$385	\$449	\$116

5K

LJE ILR C009 VAUGHN 5K

POLLED | BD: 8/10/22 | AHA#: 44501013 | Act. BW: 83 lbs.

E BRAXTON 719

ILR HOMETOWN 332A ET

E T719 BRAXTON C009

E 332A EDNA F11

E 337U DIVA A008

CHURCHILL LADY 5146C

CE	BW	WW	YW	DMI	SC	SCF	Milk	M&G	CEM
2.6	3.0	54	90	0.2	0.3	11.0	24	51	0.1
MCW	UDDR	TEAT	CW	FAT	REA	Marb	\$BMI	\$BII	\$CHB
94	1.3	1.3	80	0.00	0.65	0.08	\$293	\$356	\$132

EPDs are highlighted to show percentile rank within the breed • Green Top 10% • Orange Top 25%



5K

K17

E 6153 ROYAL K17

POLLED | BD: 8/15/22 | AHA#: 44427966 | Act. BW: 96 lbs.

R LEADER 6964

GOLDEN OAK OUTCROSS 18U

BOYD 31Z BLUEPRINT 6153

CHURCHILL LADY 1149Y

NJW 91H 100W RITA 31Z ET

CHURCHILL LADY 5188R ET

CE	BW	WW	YW	DMI	SC	SCF	Milk	M&G	CEM
-2.3	4.9	63	104	0.0	1.6	20.3	27	59	1.9
MCW	UDDR	TEAT	CW	FAT	REA	Marb	\$BMI	\$BII	\$CHB
100	1.4	1.3	62	0.02	0.51	0.04	\$403	\$479	\$108



K18

E T719 BRAXTON K18

POLLED | BD: 8/15/22 | AHA#: 44423115 | Act. BW: 95 lbs.

ANCHOR BRAXTON

E 4L SCHATZEE ET Z712

E BRAXTON 719

E Z712 GRACE C052

ANCHOR 17R

E T791 LADY RANGER X74

CE	BW	WW	YW	DMI	SC	SCF	Milk	M&G	CEM
-3.4	4.8	52	83	0.3	0.3	16.4	22	48	-2.0
MCW	UDDR	TEAT	CW	FAT	REA	Marb	\$BMI	\$BII	\$CHB
77	1.2	1.2	64	0.02	0.41	0.05	\$334	\$398	\$98



K20

E 332A HOMETOWN K20

POLLED | BD: 8/15/22 | AHA#: 44423095 | Act. BW: 80 lbs.

NJW 73S W18 HOMETOWN 10Y ET

E ILR 14Z HOLLOWAY C039

ILR HOMETOWN 332A ET

E C039 FIREPLAY G26

NJW 43T 4037 FOREVER EDNA 28X ET

E Z833 MARVEL D51

CE	BW	WW	YW	DMI	SC	SCF	Milk	M&G	CEM
4.8	1.3	47	80	0.1	0.9	16.4	25	49	3.2
MCW	UDDR	TEAT	CW	FAT	REA	Marb	\$BMI	\$BII	\$CHB
94	1.2	1.2	64	-0.03	0.36	0.16	\$353	\$419	\$119



18 MONTH OLD BULLS



K26

E 20C DIGBY K26

K26 is a result of combining some of our most tried and proven bloodlines, 332A, Braxton, Ranger on the bottom and Digby 20C on the top. K26 was found by most visitors this year. Just a very good bull here. Retaining 1/4 semen interest.

POLLED | **BD: 8/17/22** | **AHA#: 44423074** | **Act. BW: 80 lbs.**

OTAPAWA SKYMATE 2046

E ILR ATHENS D98

RSK E 2046 DIGBY ET 20C

E D98 BIG SKY MISS F69

HARVIE MISS FIREFLY 51F

E T719 LADT BRAXTON Z855

CE	BW	WW	YW	DMI	SC	SCF	Milk	M&G	CEM
6.8	2.2	53	94	0.6	0.8	16.4	27	54	4.8
MCW	UDDR	TEAT	CW	FAT	REA	Marb	\$BMI	\$BII	\$CHB
85	1.4	1.4	80	0.00	0.69	0.06	\$352	\$416	\$123



K29

E 717 HOLLOWAY K29

POLLED | BD: 8/18/22 | AHA#: 44423110 | Act. BW: 82 lbs.

SHF YORK 19H Y02

ILR HOMETOWN 332A ET

ILR 4134 YORK 717

E 332A EDNA E153

SR 021W BAYROSE 4134 ET

E 337U DIVA A058

CE	BW	WW	YW	DMI	SC	SCF	Milk	M&G	CEM
2.6	2.0	54	89	0.4	1.2	19.5	26	53	-1.2
MCW	UDDR	TEAT	CW	FAT	REA	Marb	\$BMI	\$BII	\$CHB
70	1.2	1.2	72	0.02	0.46	0.03	\$393	\$460	\$108



K35

E D83 SHINEY K35

POLLED | BD: 8/18/22 | AHA#: 44423052 | Act. BW: 83 lbs.

E 4L SCHATZEE ET Z712

E BRAXTON 719

E Z712 SCHATZEE D83

E T719 LADY BRAXTON F27

EPHR LINNETTE 530T

ILR IRON LADY 336A

CE	BW	WW	YW	DMI	SC	SCF	Milk	M&G	CEM
0.0	4.2	65	110	0.9	0.5	18.4	25	58	1.3
MCW	UDDR	TEAT	CW	FAT	REA	Marb	\$BMI	\$BII	\$CHB
98	1.3	1.2	81	0.02	0.64	0.00	\$378	\$453	\$109



K36

E 332A HOMETOWN K36

POLLED | BD: 8/19/22 | AHA#: 44423041 | Act. BW: 81 lbs.

NJW 73S W18 HOMETOWN 10Y ET

CHURCHILL KICKSTART 501C ET

ILR HOMETOWN 332A ET

CHURCHILL LADY 792E

NJW 43T 4037 FOREVER EDNA 28X ET

E 150 PERFECT LADY B005

CE	BW	WW	YW	DMI	SC	SCF	Milk	M&G	CEM
2.7	2.5	56	105	0.7	0.8	20.1	25	52	0.3
MCW	UDDR	TEAT	CW	FAT	REA	Marb	\$BMI	\$BII	\$CHB
97	1.3	1.3	76	0.00	0.61	-0.10	\$403	\$463	\$106



18 MONTH OLD BULLS



E 1319 DIVA D05 ET
Dam of K43

High-performance son of our D83 herd sire and a really uniquely bred dam. K43 topped his contemporary group on all performance aspects; WW, YW, REA, etc. A combination of performance with style and a maternal background as a bonus. A genetic outcross here to most breeders. Retaining 1/4 semen interest.

K43

E D83 SHINER K43

POLLED | BD: 8/21/22 | AHA#: 44423044 | Act. BW: 96 lbs.

E 4L SCHATZEE ET Z712
E Z712 SCHATZEE D83
E PHR LINNETTE 530T

C 19D NOTICE ME 1319 ET
E 1319 DIVA D05 ET
LJE 337U DIVA X48

CE	BW	WW	YW	DMI	SC	SCF	Milk	M&G	CEM
-1.3	5.5	72	120	1.0	0.8	14.8	24	60	1.5
MCW	UDDR	TEAT	CW	FAT	REA	Marb	\$BMI	\$BII	\$CHB
120	1.4	1.2	101	0.02	0.94	0.00	\$353	\$430	\$139

Online catalog and videos available on all sale bulls at www.ehlkeherefords.com

K38

SOLD

E D83 SHINER K38

POLLED | BD: 8/19/22 | AHA#: 44423116 | Act. BW: 86 lbs.

E 4L SCHATZEE ET Z712
E Z712 SCHATZEE D83
E PHR LINNETTE 530T

PW VICTOR BOOMER P606
E P606 BECCA B045
E 16R MISS RAFTSMAN T723

CE	BW	WW	YW	DMI	SC	SCF	Milk	M&G	CEM
-0.5	3.3	63	96	0.9	1.0	20.4	24	56	0.6
MCW	UDDR	TEAT	CW	FAT	REA	Marb	\$BMI	\$BII	\$CHB
96	1.2	1.1	78	0.02	0.64	0.03	\$401	\$475	\$102

K41

SOLD

E D83 SHINER K41

POLLED | BD: 8/19/22 | AHA#: 44423090 | Act. BW: 87 lbs.

E 4L SCHATZEE ET Z712
E Z712 SCHATZEE D83
E PHR LINNETTE 530T

E BRAXTON 719
E T719 LADY BRAXTON A047
E 337U DIVA Y852

CE	BW	WW	YW	DMI	SC	SCF	Milk	M&G	CEM
2.9	3.4	61	92	0.6	0.5	18.2	23	54	3.0
MCW	UDDR	TEAT	CW	FAT	REA	Marb	\$BMI	\$BII	\$CHB
92	1.3	1.2	73	0.03	0.45	-0.04	\$361	\$430	\$95

K45**E D83 SHINER K45**

POLLED | BD: 8/21/22 | AHA#: 44423070 | Act. BW: 92 lbs.

E 4L SCHATZEE ET Z712

ILR HOMETOWN 332A ET

E Z712 SCHATZEE D83**E 332A EDNA F122**

EPHR LINNETTE 530T

E X84 VICTORIA B069

CE	BW	WW	YW	DMI	SC	SCF	Milk	M&G	CEM
-4.7	4.9	65	116	1.0	0.8	14.1	21	53	-1.9
MCW	UDDR	TEAT	CW	FAT	REA	Marb	\$BMI	\$BII	\$CHB
115	1.1	0.9	89	0.03	0.65	0.06	\$325	\$401	\$126



E 174E YELLOWSTONE 0001 ET
Sire of K46

K46**E 0001 YELLOWSTONE K46**

SCURRED | BD: 8/21/22 | AHA#: 44423071 | Act. BW: 87 lbs.

TH FRONTIER 174E

E MC 7W SOLID ET Z833

E 174E YELLOWSTONE 0001 ET**E Z833 MARVEL D103**

E 332A EDNA D160

B LADY RAMBO 201

CE	BW	WW	YW	DMI	SC	SCF	Milk	M&G	CEM
0.0	2.8	56	88	0.1	1.2	15.1	33	61	2.5
MCW	UDDR	TEAT	CW	FAT	REA	Marb	\$BMI	\$BII	\$CHB
97	1.3	1.2	69	0.02	0.46	0.10	\$339	\$410	\$116

**K49****E 332A HOMETOWN K49**

POLLED | BD: 8/23/22 | AHA#: 44423117 | Act. BW: 83 lbs.

NJW 73S W18 HOMETOWN 10Y ET

JDH 10S YANKEE 39X

ILR HOMETOWN 332A ET**HARVIE MS GWEN 129Z**

NJW 43T 4037 FOREVER EDNA 28X ET

HARVIE MISS PERFECTION 30P

CE	BW	WW	YW	DMI	SC	SCF	Milk	M&G	CEM
3.2	2.8	52	90	0.4	0.8	16.3	24	50	2.8
MCW	UDDR	TEAT	CW	FAT	REA	Marb	\$BMI	\$BII	\$CHB
105	1.2	1.1	58	-0.02	0.19	0.18	\$343	\$417	\$108



18 MONTH OLD BULLS



K51

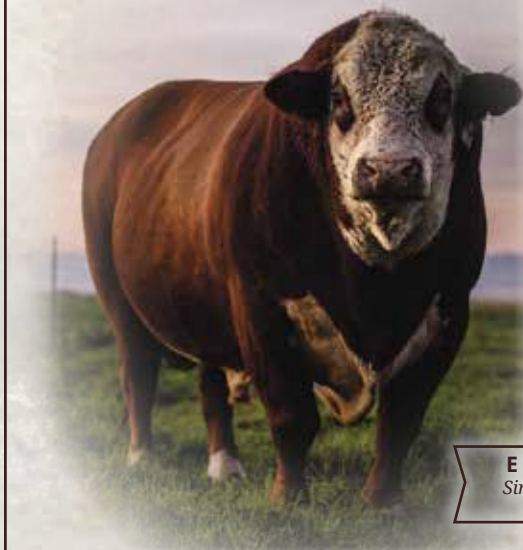
E 6153 ROYAL K51

SCURRED | BD: 8/24/22 | AHA#: 44427967 | Act. BW: 72 lbs.

R LEADER 6964
 BOYD 31Z BLUEPRINT 6153
 NJW 91H 100W RITA 31Z ET

HARVIE GUNNER 54Z
 HARVIE MS LADY 75B
 E 16R LADY RAFTSMAN U809

CE	BW	WW	YW	DMI	SC	SCF	Milk	M&G	CEM
7.5	1.7	58	88	-0.2	1.1	19.6	29	58	2.7
MCW	UDDR	TEAT	CW	FAT	REA	Marb	\$BMI	\$BII	\$CHB
81	1.3	1.4	68	0.05	0.36	0.10	\$419	\$497	\$117



K56

SOLD

E D83 SHINER K56

POLLED | BD: 8/27/22 | AHA#: 44423069 | Act. BW: 83 lbs.

E 4L SCHATZEE ET Z712
 E Z712 SCHATZEE D83
 EPHR LINNETTE 530T

E BRAXTON 719
 E T719 LADY BRAXTON 8017ET
 HARVIE E MS FIREFLY ET 19Z

CE	BW	WW	YW	DMI	SC	SCF	Milk	M&G	CEM
-1.3	3.2	56	86	0.5	0.5	15.1	24	52	1.6
MCW	UDDR	TEAT	CW	FAT	REA	Marb	\$BMI	\$BII	\$CHB
100	1.3	1.2	76	0.03	0.62	-0.03	\$330	\$391	\$100

E Z712 SCHATZEE D83
 Sire of K41, K43 K45, K56,
 K68, K76, K74, K86



K58

E 98G WOODROW K58 ET

POLLED | BD: 8/28/22 | AHA#: 44423027 | Act. BW: 85 lbs.

NJW 160B 028X HISTORIC 81E ET
 NJW 202C 81E STEWARD 98G ET
 NJW 160Z 8Y HOME MAKER 202C

ILR HOMETOWN 332A ET
 E 332A EDNA D160
 ILR 156T IRON LADY 486B ET

CE	BW	WW	YW	DMI	SC	SCF	Milk	M&G	CEM
0.7	2.1	54	82	0.2	1.2	21.0	37	64	0.4
MCW	UDDR	TEAT	CW	FAT	REA	Marb	\$BMI	\$BII	\$CHB
0	1.2	1.3	79	-0.02	0.72	0.13	\$449	\$522	\$132



K68

K68

E D83 SHINER K68

POLLED | **BD: 9/3/22** | **AHA#: 44423050** | **Act. BW: 82 lbs.**
 E 4L SCHATZEE ET Z712 E T719 BRAXTON C009
E Z712 SCHATZEE D83 E **C009 PAULA F133**
 EPHR LINNETTE 530T E MC P316 MS NASDAQ 701A ET

CE	BW	WW	YW	DMI	SC	SCF	Milk	M&G	CEM
3.4	2.7	57	92	0.6	0.4	13.6	18	47	3.8
MCW	UDDR	TEAT	CW	FAT	REA	Marb	\$BMI	\$BII	\$CHB
99	1.4	1.2	76	0.05	0.54	-0.04	\$294	\$356	\$96

K71

E 98G WOODROW K71

POLLED | **BD: 9/4/22** | **AHA#: 44423079** | **Act. BW: 89 lbs.**
 NJW 160B 028X HISTORIC 81E ET E Z712 SCHATZEE D31
NJW 202C 81E STEWARD 98G ET E D31 JAN G27
 NJW 160Z 8Y HOME MAKER 202C E 61Z BERVA C055

CE	BW	WW	YW	DMI	SC	SCF	Milk	M&G	CEM
-0.4	3.5	55	82	0.2	0.8	17.9	34	63	-1.2
MCW	UDDR	TEAT	CW	FAT	REA	Marb	\$BMI	\$BII	\$CHB
87	1.4	1.2	63	0.00	0.43	0.06	\$364	\$433	\$98

Private Treaty Spring Bull Sale – Buyer’s Convenience – Select bulls when it’s convenient for you!



K71

18 MONTH OLD BULLS



CHURCHILL LADY 5146C
Dam of K76

K76

SOLD

E D83 SHINER K76



POLLED | **BD: 9/7/22** | **AHA#: 44423046** | **Act. BW: 80 lbs.**

E 4L SCHATZEE ET Z712

CHURCHILL RED BULL 200Z

E Z712 SCHATZEE D83

CHURCHILL LADY 5146C

EPHR LINNETTE 530T

E MC 719 VICTORIA X1

CE	BW	WW	YW	DMI	SC	SCF	Milk	M&G	CEM
5.8	1.1	53	83	0.3	0.8	18.9	22	49	4.0
MCW	UDDR	TEAT	CW	FAT	REA	Marb	\$BMI	\$BII	\$CHB
95	1.3	1.3	77	0.04	0.61	0.01	\$392	\$456	\$112



K84



E D83 SHINER K84



POLLED | **BD: 9/16/22** | **AHA#: 44423057** | **Act. BW: 85 lbs.**

E 4L SCHATZEE ET Z712

HARVIE SAFNBFI COLATERAL 337U

E Z712 SCHATZEE D83

E 337U DIVA Y1

EPHR LINNETTE 530T

E T731 OPTIMA W1

CE	BW	WW	YW	DMI	SC	SCF	Milk	M&G	CEM
0.3	3.2	59	90	0.4	0.5	15.8	19	49	1.9
MCW	UDDR	TEAT	CW	FAT	REA	Marb	\$BMI	\$BII	\$CHB
102	1.4	1.2	69	0.02	0.36	-0.08	\$331	\$395	\$90



ILR 16W LADY BETH 835 ET
Dam of K98

K86

SOLD

E D83 SHINER K86



POLLED | **BD: 9/19/22** | **AHA#: 44423097** | **Act. BW: 96 lbs.**

E 4L SCHATZEE ET Z712

ILR H MILES 4140B ET

E Z712 SCHATZEE D83

LF ILR S2 MS 4140 227E

EPHR LINNETTE 530T

DW HANNAH C2

CE	BW	WW	YW	DMI	SC	SCF	Milk	M&G	CEM
-3.8	4.5	65	106	0.7	0.9	17.6	25	58	1.1
MCW	UDDR	TEAT	CW	FAT	REA	Marb	\$BMI	\$BII	\$CHB
109	1.2	1.1	80	0.00	0.63	0.07	\$375	\$454	\$119



K98

K98

E ILR D83 ZORRO K98

POLLED | **BD:** 10/4/22 | **AHA#:** 44423063 | **Act. BW:** 90 lbs.
 E 4L SCHATZEE ET Z712 PYRAMID 16W 110T 9116
E Z712 SCHATZEE D83 ILR 16W LADY BETH 835 ET
 EPHR LINNETTE 530T DJB 46B BETH 1L

CE	BW	WW	YW	DMI	SC	SCF	Milk	M&G	CEM
0.0	3.4	61	98	0.6	0.7	21.3	25	56	3.3
MCW	UDDR	TEAT	CW	FAT	REA	Marb	\$BMI	\$BII	\$CHB
109	1.4	1.3	85	0.02	0.69	-0.03	\$428	\$498	\$115

221

LJE 332A HOMETOWN 221

POLLED | **BD:** 8/11/22 | **AHA#:** 44423108 | **Act. BW:** 85 lbs.
 NJW 73S W18 HOMETOWN 10Y ET E 719 BRAXTON A012
ILR HOMETOWN 332A ET LJE A012 LADY BRAXTON 68
 NJW 43T 4037 FOREVER EDNA 28X ET LJE 337U DIVA Y908

CE	BW	WW	YW	DMI	SC	SCF	Milk	M&G	CEM
2.2	3.3	51	95	0.4	0.4	18.9	27	53	2.1
MCW	UDDR	TEAT	CW	FAT	REA	Marb	\$BMI	\$BII	\$CHB
95	1.3	1.3	66	-0.01	0.49	0.13	\$388	\$457	\$118

Private Treaty Spring Bull Sale – Buyer’s Convenience – Select bulls when it’s convenient for you!



221

18 MONTH OLD BULLS



226

LJE 252F WYATT 226

POLLED | BD: 8/26/22 | AHA#: 44427618 | Act. BW: 95 lbs.

NJW 160Z 10W WHIT 33B

HARVIE DAN SNIPER 203Z

NJW 79Z 33B FORWARD 252F

LJE 203Z FAITH 610

BW 91H 100W RITA 79Z ET

LJE 337U DIVA 008B

CE	BW	WW	YW	DMI	SC	SCF	Milk	M&G	CEM
2.0	3.5	55	83	0.1	0.7	18.6	30	57	-0.8
MCW	UDDR	TEAT	CW	FAT	REA	Marb	\$BMI	\$BII	\$CHB
80	1.3	1.4	65	-0.01	0.35	0.02	\$391	\$459	\$104



228

LJE 98G WOODROW 228

POLLED | BD: 8/29/22 | AHA#: 44423035 | Act. BW: 89 lbs.

NJW 160B 028X HISTORIC 81E ET

E 4L SCHATZEE ET Z712

NJW 202C 81E STEWARD 98G ET

LJE Z712 GRACE 713

NJW 160Z 8Y HOME MAKER 202C

LJE X84 VICTORIA 029B

CE	BW	WW	YW	DMI	SC	SCF	Milk	M&G	CEM
-1.4	3.6	59	85	0.4	1.0	18.5	32	32	-1.2
MCW	UDDR	TEAT	CW	FAT	REA	Marb	\$BMI	\$BII	\$CHB
118	1.3	1.1	76	0.00	0.68	0.04	\$389	\$460	\$110

E A012 BRAXTON F78
Sire of 231



231

LJE F78 BRAXTON 231

POLLED | BD: 9/14/22 | AHA#: 44423073 | Act. BW: 82 lbs.

E 719 BRAXTON A012

E ILR 14Z HOLLOWAY C039

E A012 BRAXTON F78

LJE C039 FIREPLAY 726

E 337U DIVA B061

LJE X84 VICTORIA 031B

CE	BW	WW	YW	DMI	SC	SCF	Milk	M&G	CEM
-0.8	2.3	51	76	0.1	0.7	13.2	26	51	-0.4
MCW	UDDR	TEAT	CW	FAT	REA	Marb	\$BMI	\$BII	\$CHB
96	1.3	1.3	60	-0.01	0.33	0.06	\$291	\$352	\$98



2013

2013

E 72C HEAVY DUTY 2013 ET

SCURRED | BD: 8/22/22 | AHA#: 44427605 | Act. BW: ET
 NJW 67U 28M BIG MAX 22Z HARVIE SAFNBFI COLATERAL 337U
 NJW 79Z 22Z HEAVY DUTY 72C ET LJE 337U DIVA X48
 BW 91H 100W RITA 79Z ET LJE RIBSTONE SHIRLEY R526

CE	BW	WW	YW	DMI	SC	SCF	Milk	M&G	CEM
9.5	2.7	60	90	0.6	1.5	19.0	26	56	3.4
MCW	UDDR	TEAT	CW	FAT	REA	Marb	\$BMI	\$BII	\$CHB
85	1.2	1.2	72	0.03	0.40	0.04	\$387	\$462	\$102

2014

E 332A HOMETOWN 2014 ET

POLLED | BD: 8/23/22 | AHA#: 44423122 | Act. BW: ET
 NJW 73S W18 HOMETOWN 10Y ET GOLDEN OAK OUTCROSS 18U
 ILR HOMETOWN 332A ET CHURCHILL LADY 1162Y ET
 NJW 43T 4037 FOREVER EDNA 28X ET DCC 8006 PATTI 4266 ET

CE	BW	WW	YW	DMI	SC	SCF	Milk	M&G	CEM
0.0	3.2	51	92	0.5	0.2	23.5	25	51	2.4
MCW	UDDR	TEAT	CW	FAT	REA	Marb	\$BMI	\$BII	\$CHB
96	1.3	1.4	65	-0.01	0.58	0.19	\$453	\$528	\$119

Private Treaty Spring Bull Sale – Buyer’s Convenience – Select bulls when it’s convenient for you!



2014

18 MONTH OLD BULLS



E 332A EDNA D160
Dam of 2017

A real standout and visitor favorite since birth! A rare opportunity to acquire a son of Pyramid 16W 110T 9116, as semen is very limited on him. 2017 excels in all the unmeasured traits and couples that with a real solid maternal background. 2017 is very dark red and short marked. This guy is a very unique genetic tool. Retaining 1/4 semen interest.



2017 **E 16W MARSHALL 2017 ET**

POLLED	BD: 8/25/22	AHA#: 44423026	Act. BW: ET						
FHF M33 STARBUCK 110T ET		ILR HOMETOWN 332A ET							
PYRAMID 16W 110T 9116		E 332A EDNA D160							
FHF 51M ACHIEVA 70T		ILR 156T IRON LADY 486B ET							
CE	BW	WW	YW	DMI	SC	SCF	Milk	M&G	CEM
-1.5	5.3	65	99	0.2	1.3	18.0	29	66	3.6
MCW	UDDR	TEAT	CW	FAT	REA	Marb	\$BMI	\$BII	\$CHB
126	1.2	1.2	92	0.01	0.84	0.00	\$415	\$488	\$138



2018

E 16W MARSHALL 2018 ET

SCURRED | BD: 8/26/22 | AHA#: 44423061 | Act. BW: ET

FHF M33 STARBUCK 110T ET CMR GVP MR MATERNAL 156T

PYRAMID 16W 110T 9116 **ILR 156T IRON LADY 486B ET**

FHF 51M ACHIEVA 70T DJB 46B BETH 1L

CE	BW	WW	YW	DMI	SC	SCF	Milk	M&G	CEM
-2.2	4.5	60	83	0.2	1.4	20.3	30	60	2.2
MCW	UDDR	TEAT	CW	FAT	REA	Marb	\$BMI	\$BII	\$CHB
87	1.2	1.2	81	0.03	0.67	0.10	\$424	\$501	\$124

2023

E 16W MARSHALL 2023 ET

POLLED | BD: 9/2/22 | AHA#: 44423062 | Act. BW: ET

FHF M33 STARBUCK 110T ET CMR GVP MR MATERNAL 156T

PYRAMID 16W 110T 9116 **ILR 156T IRON LADY 486B ET**

FHF 51M ACHIEVA 70T DJB 46B BETH 1L

CE	BW	WW	YW	DMI	SC	SCF	Milk	M&G	CEM
-3.1	4.3	49	72	0.2	1.3	19.6	31	56	6.5
MCW	UDDR	TEAT	CW	FAT	REA	Marb	\$BMI	\$BII	\$CHB
73	1.2	1.3	74	-0.01	0.72	-0.09	\$392	\$444	\$100

Private Treaty Spring Bull Sale – Buyer’s Convenience – Select bulls when it’s convenient for you!



2023

ILR 156T IRON LADY 486B ET
Dam of 2018 and 2023

BULLS FROM TUDAHL HEREFORDS



2201

TH 332A FOREST 2201 D21



POLLED | BD: 8/16/22 | AHA#: 44465495

NJW 73S W18 HOMETOWN 10Y ET E MC 7W SOLID ET Z833
ILR HOMETOWN 332A ET E Z833 MARVEL D21
 NJW 43T 4037 FOREVER EDNA 28X ET E 08X MARVEL A062

CE	BW	WW	YW	DMI	SC	SCF	Milk	M&G	CEM
-0.8	3.6	51	94	0.3	1.0	15.8	26	51	1.0
MCW	UDDR	TEAT	CW	FAT	REA	Marb	\$BMI	\$BII	\$CHB
92	1.3	1.3	65	-0.03	0.40	0.13	\$342	\$410	\$119



2204

TH 332A TUX 2204 F54



POLLED | BD: 8/25/22 | AHA#: 44465504

NJW 73S W18 HOMETOWN 10Y ET HARVIE GUNNER 54Z
ILR HOMETOWN 332A ET E 54Z LADY GUNNER F54
 NJW 43T 4037 FOREVER EDNA 28X ET CHURCHILL LADY 1149Y

CE	BW	WW	YW	DMI	SC	SCF	Milk	M&G	CEM
-2.1	4.8	58	102	0.1	1.0	17.9	31	60	-2.1
MCW	UDDR	TEAT	CW	FAT	REA	Marb	\$BMI	\$BII	\$CHB
102	1.2	1.1	71	0.01	0.60	0.13	\$387	\$462	\$127



2206

TH 332A HOMER 2206 17F



POLLED | BD: 8/27/22 | AHA#: 44465502

NJW 73S W18 HOMETOWN 10Y ET ILR H MILES 4140B ET
ILR HOMETOWN 332A ET LJE 4140B MS RILEY 17F
 NJW 43T 4037 FOREVER EDNA 28X ET LJE 337U DIVA 003B

CE	BW	WW	YW	DMI	SC	SCF	Milk	M&G	CEM
1.0	4.2	53	97	0.2	0.9	17.8	27	53	2.0
MCW	UDDR	TEAT	CW	FAT	REA	Marb	\$BMI	\$BII	\$CHB
94	1.2	1.2	67	-0.02	0.47	0.13	\$380	\$451	\$123

2208

TH 98G STEW 2208 E131



POLLED | BD: 8/21/22 | AHA#: 44465500

NJW 160B HISTORIC 81E ET E 4L SCHATZEE ET Z712

NJW 202C 81E STEWARD 98G ET E Z712 GRACE E131

NJW 160Z 8Y HOME MAKER 202C E 337U DIVA A040

CE	BW	WW	YW	DMI	SC	SCF	Milk	M&G	CEM
1.7	3.6	57	86	0.4	0.7	18.8	25	54	-1.0
MCW	UDDR	TEAT	CW	FAT	REA	Marb	\$BMI	\$BII	\$CHB
101	1.4	1.3	70	0.01	0.62	0.03	\$387	\$456	\$103



2212

TH D83 ZEKE 2212 7D



POLLED | BD: 9/13/22 | AHA#: 44484192

E 4L SCHATZEE ET Z712 E MC 7W SOLID ET Z833

E Z712 SCHATZEE D83 LJE Z833 MARVEL 7D

EPHR LINNETTE 530T LJE 337U DIVA 019A

CE	BW	WW	YW	DMI	SC	SCF	Milk	M&G	CEM
6.7	1.3	51	80	0.3	0.8	15.3	14	39	5.4
MCW	UDDR	TEAT	CW	FAT	REA	Marb	\$BMI	\$BII	\$CHB
107	1.4	1.2	67	0.02	0.36	0.05	\$323	\$386	\$103



Comparing Benefits of Bull Maturity

YEARLING BULLS

- Latest genetic offering
- Physically smaller for heifer breeding
- Potentially longer productive life
- May work better in multiple sire pasture setting than older bulls

18 MONTH OLD AND 2 YEAR OLD BULLS

- Ability to service larger group of cows
- Potentially better suited for covering large rugged pastures
- Mature characteristics more likely apparent

YEARLING BULLS



L1

What a great way to lead off the yearling bull offering! L1 is a combination of some of Colyer's best; L1 is sired by Key West and his dam is a full sister to C GKB Guardian 1015 ET. There is style and performance in abundance here and an EPD profile to match. L1 is one of the best to sell this spring! Retaining 1/4 semen interest.

L1

L1

E 0065 CAVALIER L1

SCURRED		BD: 1/7/23	AHA#: 44463987	Act. BW: 82 lbs.					
C CJC BELLE HEIR ET		LOEWEN GENESIS G16 ET							
C KEY WEST 0065		C 8037 GENESIS GAL 1049 ET							
C BLACK HAWK LASS 8019		C CJC BELLE AIR LASS 8037 ET							
CE	BW	WW	YW	DMI	SC	SCF	Milk	M&G	CEM
5.6	3.8	71	112	0.6	1.2	20.9	35	71	2.8
MCW	UDDR	TEAT	CW	FAT	REA	Marb	\$BMI	\$BII	\$CHB
106	1.4	1.4	86	-0.01	0.72	0.40	\$454	\$560	\$165

L4

E 183F NORTH FORK L4

POLLED		BD: 2/2/23	AHA#: 44467202	Act. BW: 75 lbs.					
KCF BENNETT STRATEGY Z303 ET		BAR STAR MAGNITUDE 737							
TH MASTERPLAN 183F		E 737 MEGAN J6							
TH 512X 145Y DOMINETTE 57B		E T719 LADT BRAXTON Z855							
CE	BW	WW	YW	DMI	SC	SCF	Milk	M&G	CEM
7.1	1.6	58	99	0.3	1.3	15.8	24	53	5.6
MCW	UDDR	TEAT	CW	FAT	REA	Marb	\$BMI	\$BII	\$CHB
84	1.5	1.5	63	0.06	0.33	0.38	\$351	\$444	\$135



L4



L9

L9

E H098 WYATT L9

POLLED | **BD: 3/5/23** | **AHA#: 44467199** | **Act. BW: 93 lbs.**
 NJW 79Z 33B FORWARD 252F HARVIE SAFNBFI COLATERAL 337U
E 252F WYATT H098 **E 337U DIVA Y37**
 CHURCHILL LADY 5146C E T719 LADY BRAXTON W37

CE	BW	WW	YW	DMI	SC	SCF	Milk	M&G	CEM
1.5	4.4	68	113	0.5	1.0	17.7	23	57	2.1
MCW	UDDR	TEAT	CW	FAT	REA	Marb	\$BMI	\$BII	\$CHB
83	1.4	1.5	76	0.04	0.46	-0.04	\$371	\$464	\$126

L10

E H098 WYATT L10

POLLED | **BD: 3/24/23** | **AHA#: 44462696** | **Act. BW: 98 lbs.**
 NJW 79Z 33B FORWARD 252F CMR GVP MR MATERNAL 156T
E 252F WYATT H098 **ILR 156T IRON LADY 486B ET**
 CHURCHILL LADY 5146C DJB 46B BETH 1L

CE	BW	WW	YW	DMI	SC	SCF	Milk	M&G	CEM
-1.7	3.7	52	82	0.3	1.4	19.2	33	59	4.0
MCW	UDDR	TEAT	CW	FAT	REA	Marb	\$BMI	\$BII	\$CHB
72	1.3	1.3	83	-0.01	0.77	0.05	\$420	\$485	\$131





L10

YEARLING BULLS

3L



3L

E 16W BEAU 3007 ET

									
POLLED	BD: 2/25/23	AHA#: 44467203	Act. BW: ET						
KCF BENNETT STRATEGY Z303 ET		ILR HOMETOWN 332A ET							
TH MASTERPLAN 183F		LJE 332A DIVA 4D							
TH 512X 145Y DOMINETTE 57B		LJE 337U DIVA X53							
CE	BW	WW	YW	DMI	SC	SCF	Milk	M&G	CEM
2.8	3.3	65	117	0.7	1.3	15.9	22	55	4.2
MCW	UDDR	TEAT	CW	FAT	REA	Marb	\$BMI	\$BII	\$CHB
98	1.4	1.4	72	0.02	0.50	0.26	\$353	\$444	\$134

3007

E 16W BEAU 3012 ET

									
POLLED	BD: 2/11/23	AHA#: 44462704	Act. BW: ET						
FHF M33 STARBUCK 110T ET		PW MOHICAN NASDAQ P316							
PYRAMID 16W 110T 9116		E MC P316 MS NASDAQ 701A ET							
FHF 51M ACHIEVA 70T		HARVIE MISS FIREFLY 51F							
CE	BW	WW	YW	DMI	SC	SCF	Milk	M&G	CEM
6.0	2.6	49	77	0.1	0.7	16.0	21	46	5.2
MCW	UDDR	TEAT	CW	FAT	REA	Marb	\$BMI	\$BII	\$CHB
89	1.4	1.4	68	0.02	0.47	-0.04	\$328	\$383	\$99

3007



3012

3012

E 9116 BEAU 3012 ET

POLLED | BD: 2/21/23 | AHA#: 44462706 | Act. BW: ET lbs.
 FHF M33 STARBUCK 110T ET PW MOHICAN NASDAQ P316
 PYRAMID 16W 110T 9116 E MC P316 MS NASDAQ 701A ET
 FHF 51M ACHIEVA 70T HARVIE MISS FIREFLY 51F

CE	BW	WW	YW	DMI	SC	SCF	Milk	M&G	CEM
6.0	2.6	49	77	0.1	0.7	16.0	21	46	5.2
MCW	UDDR	TEAT	CW	FAT	REA	Marb	\$BMI	\$BII	\$CHB
89	1.4	1.4	68	0.02	0.47	-0.04	\$328	\$383	\$99

32

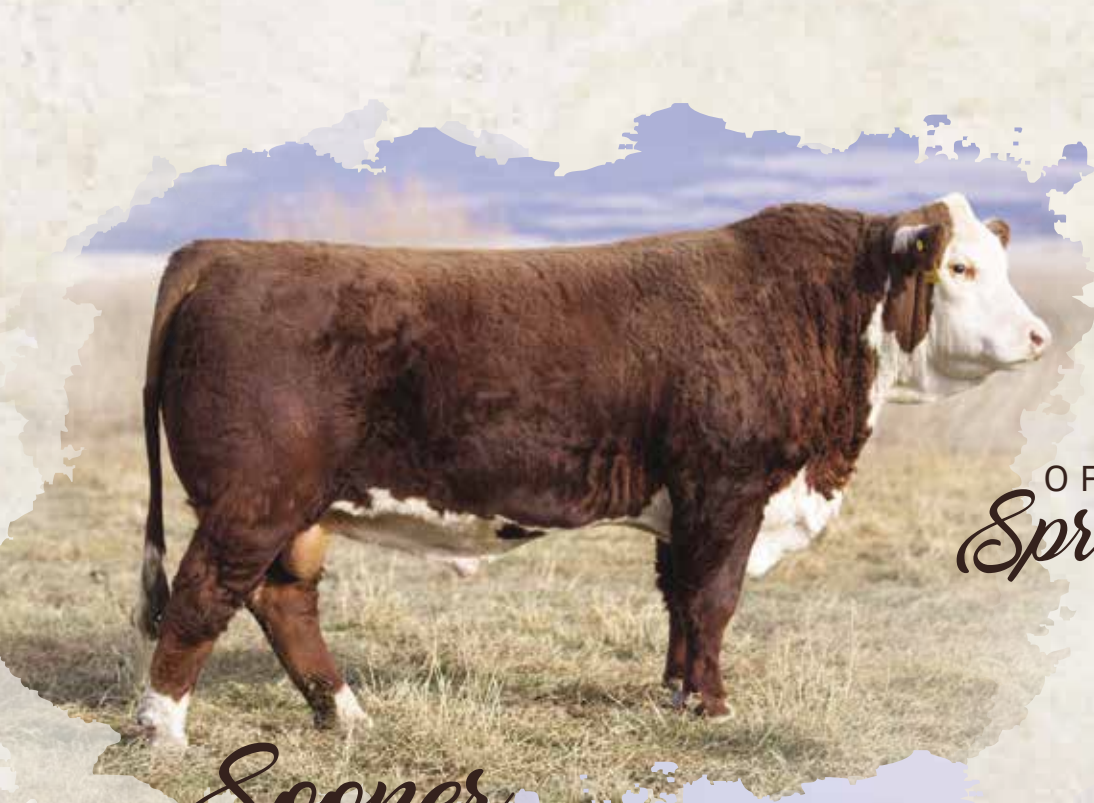
LJE 65J BROKER 32

POLLED | BD: 3/7/23 | AHA#: 44462699 | Act. BW: 89 lbs.
 INNISFAIL WHR X651/723 4013 ET HARVIE DAN SNIPER 203Z
 MOHICAN DOW JONES 65J LJE 203Z FAITH 5014
 MOHICAN MATTIE 403E ET LJE 11X MISS ANCHOR 008A

CE	BW	WW	YW	DMI	SC	SCF	Milk	M&G	CEM
-0.2	2.4	65	100	0.3	1.2	15.6	33	66	1.2
MCW	UDDR	TEAT	CW	FAT	REA	Marb	\$BMI	\$BII	\$CHB
78	1.3	1.3	74	0.03	0.40	0.18	\$353	\$440	\$126



32



OFFERING SEMEN
Spring of 2024

Sooner



Benton

K4

E 6112 SOONER K4

HOMO POLLED | BD: 1/30/22 | AHA#: 44357320 | Act. BW: 87 lbs.

DM BR SOONER CHURCHILL TORO 506C ET
 ILR U201 SOONER 6112 ET E 507C LADY DEW 9011 ET
 KCF MISS PROFICIENT U201 E MC P316 MS NASDAQ 710A ET

CE	BW	WW	YW	DMI	SC	SCF	Milk	M&G	CEM
9.1	2.1	49	82	0.2	1.1	18.3	24	48	6.4
MCW	UDDR	TEAT	CW	FAT	REA	Marb	\$BMI	\$BII	\$CHB
63	1.5	1.5	63	-0.01	0.58	0.12	\$375	\$441	\$114

This guy offers up a stellar maternal breeding option, without sacrificing performance. K4 topped this contemporary group for weaning weight and yearling weight. This pedigree includes some real breed icons! K4 was highly complimented by all visitors this past summer and fall. K4 is homo polled.

35K

JDH MRD 54E 8G BENTON 35K ET

POLLED | BD: 1/31/22 | AHA#: 44341381 | Act. BW: 89 lbs.

JDH 11B STUD 63E BR TRUST 0217 3373
 JDH AH BENTON 8G ET JDH MS 40B TRUST 3373 54E
 JDH AH MS 34X VICTOR 33A45C ET JDH RBC MS 123 REDEEM 40B ET

CE	BW	WW	YW	DMI	SC	SCF	Milk	M&G	CEM
5.1	0.6	65	103	0.4	0.6	20.0	32	64	4.3
MCW	UDDR	TEAT	CW	FAT	REA	Marb	\$BMI	\$BII	\$CHB
94	1.4	1.3	91	0.09	0.90	0.36	\$446	\$545	\$163

Our selection from the 2023 Atkins/Delaney bull offering. This Benton son offers calving ease/low birth weight with above average growth. 35K also posts stellar carcass epds. 35K was greatly appreciated by all who have seen him. Exportable semen available.

EHLKE HEREFORDS MONTANA MADE PRODUCTION SALE

SATURDAY, SEPTEMBER 21, 2024
SMART AUCTIONS ONLINE SALE & RANCH OPEN HOUSE

Thank you to our Bidders & Buyers!

High Sellers in the 2023 Montana Made Sale



E 174E PARADISE J118
Aaron and Sara Friesz, ND



E 6153 RITA J71
Terri Frederickson, ID



LJE ILR D98 SPECTRE 17K
Copeland Herefords, NM



E 1015 SENTINEL 3011 ET
Anchor Polled Herefords, Montana



Understanding Hereford EPDs

The American Hereford Association (AHA) currently produces expected progeny differences (EPDs) for 17 traits and calculates three profit (\$) indexes. AHA's genetic evaluation makes use of a Marker Effects Model that allows the calculation of EPDs by incorporating the pedigree, phenotypic and genomic profile of an animal. Animals that have a genomic profile will be denoted with a GE-EPD logo. The current suite of Hereford EPDs and \$ indexes includes:

Calving Ease — Direct (CE)

CE EPD is based on calving ease scores and birth weights and is measured on a percentage. CE EPD indicates the influence of the sire on calving ease in females calving at 2 years of age. For example, if sire A has a CE EPD of 6 and sire B has a CE EPD of -2, then you would expect on average if comparably mated, sire A's calves would be born with an 8% more likely chance of being unassisted when compared to sire B's calves.

Birth Weight (BW)

BW EPD is an indicator trait for calving ease and is measured in pounds. For example, if sire A has a BW EPD of 3.6 and sire B has a BW EPD of 0.6, then you would expect on average if comparably mated, sire A's calves would come 3 lb. heavier at birth when compared to sire B's calves. Larger BW EPDs usually, but not always, indicate more calving difficulty. The figure in parentheses found after each EPD is an accuracy value or reliability of the EPD.

Weaning Weight (WW)

WW EPD is an estimate of pre-weaning growth that is measured in pounds. For example, if sire A has a WW EPD of 60 and sire B has a WW EPD of 40, then you would expect on average if comparably mated, sire A's calves would weigh 20 lb. heavier at weaning when compared to sire B's calves.

Yearling Weight (YW)

YW EPD is an estimate of post-weaning growth that is measured in pounds. For example, if sire A has a YW EPD of 100 and sire B has a YW EPD of 70, then you would expect on average if comparably mated, sire A's calves would weigh 30 lb. heavier at a year of age when compared to sire B's calves.

Dry Matter Intake (DMI)

The Dry Matter Intake EPD predicts the daily consumption of pounds of feed. For example, if sire A has a DMI EPD of 1.1 and sire B has a DMI EPD of 0.1, you would expect sire B's progeny, if comparably mated, to consume on average 1 pound of feed less per day.

Scrotal Circumference (SC)

Measured in centimeters and adjusted to 365 days of age, SC EPD is the best estimate of fertility. It is related to the bull's own semen quantity and quality, and is also associated with age at puberty of sons and daughters. Larger SC EPDs suggest younger age at puberty. Yearling sons of a sire with a .7 SC EPD should have yearling scrotal circumference measurements that aver-

age 0.7 centimeters (cm) larger than progeny by a bull with an EPD of 0.0 cm.

Sustained Cow Fertility

The AHA's new Sustained Cow Fertility EPD (SCF) is a prediction of a cow's ability to continue to calve from three years of age through twelve years of age, given she calved as a two-year-old. The EPD is expressed as a deviation in the proportion of the ten-possible calving's to twelve years old expressed as a probability. For example, the daughters of a bull with a 30 EPD would have the genetic potential to have one more calf by age twelve than the daughters from a bull with a 20 EPD. In other words, the daughters from the 30 EPD bull would have a 10% greater probability of having one more calf than the bull with a 20 EPD. This is equivalent to saying that the daughters are 10% more likely to remain in the herd to age 12.

Maternal Milk (MM)

The milking ability of a sire's daughters is expressed in pounds of calf weaned. It predicts the difference in average weaning weights of sires' daughters' progeny due to milking ability. Daughters of the sire with a +14 MM EPD should produce progeny with 205-day weights averaging 24 lb. more (as a result of greater milk production) than daughters of a bull with a MM EPD of -10 lb. (14 minus -10.0 = 24 lb.). This difference in weaning weight is due to total milk production during the entire lactation.

Maternal Milk & Growth (M&G)

Maternal Milk & Growth reflects what the sire is expected to transmit to his daughters for a combination of growth genetics through weaning and genetics for milking ability. It is an estimate of daughters' progeny weaning weight. A bull with a 29 lb. M&G EPD should sire daughters with progeny weaning weights averaging 19 lb. heavier than progeny of a bull's daughters with a M&G EPD of 10 lb. (29 minus 10 = 19 lb.). It is equal to one-half the sire's weaning weight EPD, plus all of his MM EPD. No accuracy is associated with this since it is simply a mathematical combination of two other EPDs. It is sometimes referred to as "total maternal" or "combined maternal."

Maternal Calving Ease (MCE)

MCE EPD predicts how easily a sire's daughters will calve at 2 years of age and is measured on a percentage. For example, if sire A has a MCE EPD of 7 and sire B has a CE EPD of -3, then you would expect on average if comparably mated, sire A's daughters would calve with a 10% more likely chance of being unassisted when compared to sire B's daughters.

Mature Cow Weight (MCW)

The MCW EPD was designed to help breeders select sires that will either increase or decrease mature size of cows in the herd. The trait was developed after years of cow weight data collection and the EPD relates directly to the maintenance requirements of a cow herd. For example, if sire A has a MCW EPD of 100 and sire B has an EPD of 85, then you would expect the females of sire A, if mated to similar cows, to be 15 lb. heavier at mature size.

Udder suspension (UDDR)

UDDR EPDs are reported on a 9 (very tight) to 1 (very pendulous) scoring scale. Differences in sire EPDs predict the difference expected in the sires' daughters' udder characteristics when managed in the same environment. For example, if sire A has a UDDR EPD of 0.4, and sire B has a UDDR EPD of -0.1, the difference in the values is 0.5, or one-half of a score. If daughters of sires A and B are raised and managed in the same environment, you would expect half a score better udder suspension in daughters of sire A, compared to sire B.

Teat size (TEAT)

TEAT EPDs are reported on a 9 (very small) to 1 (very large, balloon shaped) scoring scale. Differences in sire EPDs predict the difference expected in the sires' daughters' udder characteristics when managed in the same environment. For example, if sire A has a teat size EPD of 0.4, and sire B has a teat size EPD of -0.1, the difference in the values is 0.5, or one-half of a score.

If daughters of sires A and B are raised and managed in the same environment, you would expect half a score smaller teat size in daughters of sire A, compared to sire B.

Carcass Weight (CW)

Carcass weight is a beneficial trait when considering the impact that pounds have relative to end product value. At the same age constant endpoint, sires with higher values for carcass weight will add more pounds of hot carcass weight compared to sires with lower values for carcass weight. For example, if sire A has a CW EPD of 84 and sire B has a CW EPD 64, then you would expect the progeny of sire A, if harvested at the same age constant endpoint, to have a 20-lb. advantage in terms of hot carcass weight.

Rib Fat (FAT)

The FAT EPD reflects differences in adjusted 365-day, 12th-rib fat thickness based on carcass measurements of harvested cattle. Sires with low, or negative FAT EPDs are expected to produce leaner progeny than sires with higher EPDs. Ultrasound measures are also incorporated into this trait and have been shown to be highly correlated with the performance of slaughter progeny. All data is expressed on a carcass scale.

Ribeye Area (REA)

REA EPDs reflect differences in an adjusted 365-day ribeye area measurement based on carcass measurements of harvested cattle. Sires with relatively higher REA EPDs are expected to produce better-muscled and higher percentage yielding slaughter progeny than will sires with lower REA EPDs. Ultrasound measurements are also incorporated into this trait and have been shown to be highly correlated with the performance of slaughter progeny. All data is expressed on a carcass scale.

Marbling (MARB)

MARB EPDs reflect differences in an adjusted 365-day marbling score (intramuscular fat, [IMF]) based on carcass measurements of harvested cattle. Breeding cattle with higher MARB EPDs should produce slaughter progeny with a higher degree of IMF and therefore higher quality grades. Ultrasound measurements are also incorporated into this trait and have been shown to be highly correlated with the performance of slaughter progeny. All data is expressed on a carcass scale.

Baldie Maternal Index (BMI\$)

The Baldie Maternal Index is a maternally focused index that is based on a production system that uses Hereford x Angus cross cows. Progeny of these cows are directed towards Certified Hereford Beef. This index has significant weight on Sustained Cow Fertility, which

predicts fertility and longevity of females. There is a slightly positive weight on Weaning Weight, Mature Cow Weight and Milk which accounts for enough growth but ensures females do not increase inputs. There is some negative emphasis on Dry Matter Intake, but a positive weighting on Carcass Weight which is anticipated to provide profitability from finishing of non-replacement females and castrated males. Marbling and Rib-eye Area are also positively weighted to keep the harvested progeny successful for CHB. This index is geared to identify Hereford bulls that will be profitable when used in a rotational cross with mature commercial Angus cows.

Brahman Influence Index (BII\$)

The Brahman Influence Index is a maternally focused index that is based on a production system that uses Brahman x Hereford cross cows. Progeny of these cows are directed towards a commodity beef market since Certified Hereford Beef does not accept Brahman influenced cattle. This index has significant weight on Sustained Cow Fertility, which predicts fertility and longevity of females. There is a slightly positive weight on Weaning Weight, Mature Cow Weight and Milk which accounts for enough growth but ensures females do not increase inputs. There is some negative emphasis on Dry Matter Intake, but a positive weighting on Carcass Weight which is anticipated to provide profitability in finishing non-replacement females and castrated males. Marbling and Rib-eye Area are also positively weighted to keep harvested progeny successful for a variety of commodity based programs. This index targets producers that use Hereford bulls on Brahman influenced cows.

Certified Hereford Beef Index (CHB\$)

The Certified Hereford Beef Index is a terminal sire index that is built on a production system where Hereford bulls are mated to mature commercial Angus cows and all progeny will be targeted for Certified Hereford Beef after the finishing phase. This index has significant weight on Carcass Weight to ensure profit on the rail. As well there is a positive weighting for Average Daily Gain along with a negative weighting on Dry Matter Intake to ensure efficient pounds of growth in the finishing phase. Keep in mind, this production system takes advantage of complimentary breeding with the commercial Angus cow. Although Marbling is weighted positively in this index, a positive weighting for Rib-eye Area and a negative weighting for Back Fat are a greater priority in this index to allow for optimum end-product merit. This is the only index that has no emphasis on fertility. Remember that no replacement heifers are being retained.

We are showing the most commonly used EPDs and Indexes for each animal. We are offering the AHA explanation of all the EPDs and indexes currently being calculated by the American Hereford Association. If you would like to see a bull's EPD that we do not show in the catalog, you can look it up online at www.hereford.org or ask one of us. Following is the most current Hereford Average EPD table. Please keep in mind that EPD averages/baselines are different between breeds.

Breed Average EPDs

CE	BW	WW	YW	MM	M&G	SC	Fat	REA	Marb	BMI\$	BII\$	CHB\$
3.3	2.7	55	89	26	54	1.0	0.020	0.43	0.13	358	431	117



**P.O. Box 1487
Townsend, MT 59644**



Catalog designed by
 **Generation 6**
marketing
www.generation6.co