



Your Black Baldy Source

# GANT POLLED HEREFORDS & ANGUS

Annual Sale **FRIDAY**

# FEBRUARY 23, 2024

**1 PM at GANT RANCH** • Complimentary Lunch  
37195 285th St., 2 miles W. of Geddes, SD

*Selling:* **50** TWO YEAR OLD HEREFORD & ANGUS BULLS  
**30** ANGUS HEIFERS BRED ANGUS • **6** HEREFORD HEIFERS BRED ANGUS  
**2** BALDY BULLS • **2** BALDY HEIFERS BRED ANGUS

## GANT TESTED



Sire: RV 4013 Tested

Dam: Gant Trust

BW 2.5 WW 69 YW 114 MM 35

## GANT PAYWEIGHT



Sire: A&B Payweight

Dam: Gant Bullseye

BW 1.0 WW 59 YW 99 M 29

Bid online at [www.thelivestocklink.com](http://www.thelivestocklink.com)



Dennis Gant

(605) 337-2564 • (605) 680-1542

37214 - 285th St • Geddes, SD

dggant@midstatesd.net

Mark Gant

(605) 337-2340 • (605) 680-1540

PO Box 15, Geddes, SD

markgant@midstatesd.net

[www.gantpolledherefordandangus.com](http://www.gantpolledherefordandangus.com)



*Your Black  
Buddy Source* **GANT POLLED  
HEREFORDS & ANGUS**

*Annual Sale* **FRIDAY  
FEBRUARY 23, 2024**

**1 PM at GANT RANCH • Complimentary Lunch @ 11:30 am  
37195 285th St., 2 miles W. of Geddes, SD**

---

<b>Auctioneer:</b>	Chisum Peterson - (605) 730-4214
<b>Mark Gant's Cell:</b>	(605) 680-1540 or home 337-2340
<b>Dennis Gant's Cell:</b>	(605) 680-1542 or home 337-2564
<b>Livestock Representatives:</b>	Hereford America; Tri-State Livestock; Tri State Neighbor; Cattle Business Weekly; Dr. Brian Soulek, DVM, Platte, SD.
<b>Sale Day Only Special:</b>	Haul your own bull sale day and receive a \$50 discount! Transportation of the bred females is responsibility of buyer. We prefer to have the bred females load out sale day or arrangements made following the sale.
<b>Terms:</b>	Terms are cash or check. Please make settlement for the cattle prior to leaving or loading out.
<b>Herd Health:</b>	Bulls have had a complete herd health program as calves. Prior to the sale the bulls have had two shots of Fugoguard (foot rot), Dectomax pour on. All bulls have been semen tested by Dr. Brian Soulek, Platte, SD
<b>Free Delivery:</b>	We will keep bulls free of charge and would like to start delivery at our convenience in April unless other arrangements are made. We will deliver free of charge within 300 miles. We will deliver out of state purchases to central points and cooperate with the buyer to get full delivery at a minimal cost.
<b>Guarantee:</b>	All bulls are guaranteed breeders for the first breeding season. Breeding season is defined as the 90-day period following the first turnout of the bull. If a replacement bull is available, he will be provided or if the buyer prefers, credit toward one bull will be given in the following year's sale less salvage value from the bull. When there is no salvage value or death of a bull 50% credit will be given.
<b>Liability</b>	We will do our best to see there are no accidents, but we will not be responsible for any accidents that might occur. You attend at your own risk.
<b>Complimentary Lunch:</b>	Beef lunch will be served beginning at 11:30 a.m.
<b>Inclement Weather:</b>	Listen to WNAX in case of a postponement date.
<b>Bull Mortality Insurance</b>	Trina Fousek, Agent - Bank West, Geddes, SD 605-337-3333

*Catalog designed  
and printed by:*  
**Custom  
PRINTING**  
Jennifer Oberbroekling, Owner  
318 Main Ave • PO Box 478  
Platte, SD 57369  
Phone: 605-337-2390  
Email: customprint@midstatesd.net



Dear Cattlemen -

Welcome to our Annual Bull Sale! We are very excited to offer in our 110th year of raising cattle an outstanding selection of 50 Hereford and Angus bulls that are ready to meet your cattle operation's needs.

We have a great set of bulls to showcase in 2024 with both the Hereford and Angus genetics, we can produce the quality of beef that is in demand now more than ever. Today's cattle market demands the use of the best genetics to improve your profit potential.

This year will be the conclusion of the disbursement of the Angus Herd. We have a great selection of Angus 2-Year-Old Bulls and 30 very nice Angus Heifers bred Angus for sale. The bulls will have the same guarantee as we have had in the past. We truly appreciate all of our Angus customers over the past 30 years who have supported us while in the Angus cattle business.

Our Hereford herd continues to grow and we are bringing in some of the newest and proven genetics in the Hereford business. This may be our 110th year in the Hereford business, but we are just getting started! Our plans are to focus solely on the Herefords and continue to strive to provide top notch bulls that will provide exceptional service to your herd in the future. We are very excited for the next chapter in 2025 and hope you will continue to join us on this journey.

We encourage you to come early and walk through our yards and view the bulls and heifers for sale. We will also be happy to show you any of the bulls or heifers before sale day. Just give one of us a call. Thank you for your interest and past patronage, and remember we won't forget you once you load your bulls out!

Hope to see you on Friday, February 23rd, at 1pm at the ranch, 37195 285th Street, which is 2 miles West of Geddes, SD.

Mark and Denny  
(605) 680-1540 or (605) 680-1542

***Bid Online!***  
If you are unable to attend the sale, you can register to watch or bid online through The Livestock Link by following these instructions:



- Visit our website, [www.thelivestocklink.com](http://www.thelivestocklink.com)
- Click the "Auctions" tab
- Click on "Click Here to Register"
- Enter your e-mail address and password, and fill out all your contact information
- Fill out your Banking Information. If you are only viewing the sale and do not wish to bid, this information can be left blank.
- Check the checkbox at the bottom of the page that says "I'm not a robot" to prove you are a real person
- Click "Register" at the bottom of the page
- You will receive an email with a link to activate your account.
- **Please register to bid at least 24 hours in advance of the sale.**
- Contact Marc Hotchkiss at (605) 210-1956 for help or with any questions.

You will receive an email when you are approved for bidding. All applications will be reviewed and processed promptly. You will receive a bidder number only after you have made a purchase in the sale, and that number will only be used at that sale. When the sale is completed, please contact the sale owner or manager for instructions of payment and delivery of your purchase.

To use our service, you must have access to High Speed Internet.

***Questions?***

***Contact Jessica Kammerer at (605) 786-7066 or Support at (605) 920-9261***

**[www.TheLivestockLink.com](http://www.TheLivestockLink.com)**



# HEREFORD AND ANGUS REFERENCE SIRES



## RV 4013 TESTED 0710

INNISFAIL WHR 4013  
RV 4013 TESTED 0710  
RV LADY TIEM 0562

Trait	BW	WW	YW	M
EPD's	3.4	70	116	29

This new herd sire is Homozygous polled. Red necked good pigment. His sire 4013 has gained a lot of popularity for his ability to sire high quality carcass cattle. Semen available.



## BAR JZ VANQUISH 329J

Reg #44248339  
TATOO 329J 3/8/21  
JDH VICTOR 719T 33Z ET  
RV VALOR 9444G ET  
RV BOBBI 1404  
BAR JZ HEARTHSTONE 426B ET  
BAR JZ HEARTSTRINGS 325G  
BAR JZ DANIELLE 148X

Trait	BW	WW	YW	M
EPD's	-1.3	58	99	18

Son of the sought after RV Valor bull. Proven heifer bull and used on our heifers in 2023. Owned with Bar JZ Herefords. Semen available.



## NJW 135U 10W DECORBY 27F

LJR 023R WHITMORE 10W  
NJW 135U 10W DECORBY 27F  
NJW 4037 345 DURANGO VACA

Trait	BW	WW	YW	M
EPD's	1.7	65	98	22

A Homozygous Polled big bodied herd bull with excellent numbers. Great eye pigment and early growth in his calves his females should be great.



# HEREFORD AND ANGUS REFERENCE SIRES



## SLEEPY LEADER 729

R Leader 6964  
 Sleepy Leader 729  
 Blacktop Hannah 160

Trait	BW	WW	YW	M
EPD's	1.1	49	83	24

Leader is a proven heifer bull with performance and good pigment.



## ESF 31C STEENSLAND 903

516 STEENSLAND 31C  
 ESF 31C STEENSLAND 903  
 ESF 028X VIOLET 603

Trait	BW	WW	YW	M
EPD's	2.1	56	87	36

Steenland is a proven heifers bull. Sired a very uniform group of calves from first calf heifers. He has a very strong maternal pedigree.

There's no mama like a Hereford-sired mama. Net income of \$51 more per cow per year and a 7% advantage in conception rate, compared to straight Angus females.\* All this from a bull that is known for its fertility and easy-going nature. Hereford bulls — better mamas and no headaches.

**Hereford** — *gentle bulls* making black better.

\* Data from the Circle A Ranch Heterosis Project



P.O. Box 014059 ■ Kansas City, MO 64101  
 816.842.3757 ■ [www.hereford.org](http://www.hereford.org)



# HEREFORD AND ANGUS REFERENCE SIRES



## WAR EXCHANGE RATE V661

AAA 19912637

TATOO G592 8/28/19

BARSTOW CASH

STYLES EXCHANGE RATE V661

PLAINVIEW LASSIE 71B

SAV RESOURCE 1441

WAR RESOURCE C513 Y351

WAR TRUE VALUE Y351 T092

Trait	BW	WW	YW	M
EPD's	0.9	67	114	26

Low birth weight high performing Wagonhammer Bull. Adds muscle and easy fleshing ability.



## MOGCK ENHANCE 1928

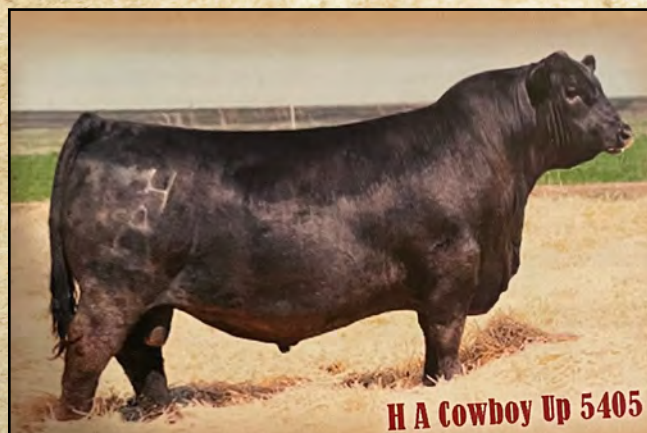
SYDGEN ENHANCE

MOGCK ENHANCE 1928

MOGCK EILEEN 955

Trait	BW	WW	YW	M
EPD's	1.8	71	139	32

A powerful high growth low birth bull. Sired by the great Sydgen Enhance bull that is unmatched calving ease, growth, docility and marbling, and the #1 bull in the angus bred for registration in 2020 and 2021.



## A&B COWBOY UP 8115

HA COWBOY UP 5405

A&B COWBOY UP 8115

A&B ERICA 5117

Trait	BW	WW	YW	M
EPD's	2.6	74	136	13

Cowboy Up 8115 his first calves are thick and deep bodied and he is a proven heifer bull should have great females.

Pictured sire of A&B Cowboy Up 8115



# HEREFORD AND ANGUS REFERENCE SIRES




Pictured sire of A&B Payweight 7198

## A&B PAYWEIGHT 7198

BASIN PAYWEIGHT 1682  
A&B PAYWEIGHT 7198  
A&B LUCY 5294

Trait	BW	WW	YW	M
EPD's	0	67	110	33

A&B Payweight is a type changer for adding muscle substance and fleshing ability. He is a proven low birth weight bull.



THE POWER OF **BLACK.**  
**ONLY BETTER.**

### HEREFORDS—THE EFFICIENCY EXPERTS

Adding Hereford genetics to your herd makes perfect business sense in a cost-driven economy. Excellent conversion, hardiness, fertility, longevity and even disposition can help reduce input costs. These Hereford efficiencies are ideal for your herd, your business and your plans for the future. Low-maintenance cattle, long-term profit. Now that's power.



# GANT 2 YEAR OLD HEREFORDS AND ANGUS

**GANT TESTED TOUGH 225 524**  
Bull #44382208

Tag: 524    Tattoo: 225    Homo Polled    BD: 3/23/22

LOT 1



INNISFAIL WHR X651/723 4013 ET  
RV 4013 TESTED 0710 ET  
RV LADY TIME 0562 (DOD)  
GANT TRUST 398C  
GANT TRUST 452E  
GANT REVOLUTION 386B

CE	BW	WW	YW	DEMI	SC	SCF	MM	MG
1.5	2.5	69	114	0.3	2.0	18.8	35	69
MCE	MCW	UDDR	TEAT	CW	FAT	REA	MARB	
4.0	111	1.2	1.2	74	0.012	0.53	0.21	
BMI	BII	CHB		BW	WW	YW	Scrotal	
410	503	138		85	680	1000	40	

**GANT STEENSLAND 237 016**  
Bull #44382171

Tag: 016    Tattoo: 237    Polled    BD: 4/25/22

LOT 2



S16 STEENSLAND 31C ET  
ESF 31C STEENSLAND 903  
ESF 028X VIOLET 603  
MPH 10Y HOMETOWN E10 ET  
GANT HOMETOWN 016 500  
GANT ABOUT TIME 444D

CE	BW	WW	YW	DEMI	SC	SCF	MM	MG
6.0	1.3	53	88	0.1	0.9	18.2	32	58
MCE	MCW	UDDR	TEAT	CW	FAT	REA	MARB	
4.1	93	1.1	1.2	73	0.022	0.42	0.08	
BMI	BII	CHB		BW	WW	YW	Scrotal	
385	454	122		75	610	1080	38	

**GANT DECORBY 223 514**  
Bull #44382206

Tag: 514    Tattoo: 223    Polled    BD: 4/30/22

LOT 3



LJR 023R WHITMORE 10W  
NJW 135U 10W DECORBY 27F ET  
NJW 4037 34S DURANGO VACA 135U  
R ON TARGET 5523  
GANT TARGET 394E  
GANT REVOLUTION 365H

CE	BW	WW	YW	DEMI	SC	SCF	MM	MG
1.3	3.8	68	107	0.8	1.3	17.1	19	53
MCE	MCW	UDDR	TEAT	CW	FAT	REA	MARB	
1.5	129	1.0	0.9	66	0.002	0.29	0.06	
BMI	BII	CHB		BW	WW	YW	Scrotal	
346	428	96		88	620	920	38	

**GANT STEENSLAND 241 027**  
Bull #44382169

Tag: 027    Tattoo: 241    Polled    BD: 4/30/22

LOT 4



S16 STEENSLAND 31C ET  
ESF 31C STEENSLAND 903  
ESF 028X VIOLET 603  
MPH 10Y HOMETOWN E10 ET  
GANT HOMETOWN 027 494  
GANT PROSPECTOR 145 450D

CE	BW	WW	YW	DEMI	SC	SCF	MM	MG
1.5	4.0	62	103	0.2	1.0	18.9	33	63
MCE	MCW	UDDR	TEAT	CW	FAT	REA	MARB	
3.3	93	1.1	1.2	74	0.022	0.42	0.05	
BMI	BII	CHB		BW	WW	YW	Scrotal	
396	472	121		90	605	1010	40	



# GANT 2 YEAR OLD HEREFORDS AND ANGUS

**GANT TESTED 218 493**  
Bull #44382201

Tag: 493    Tattoo: 218    Polled    BD: 4/27/22

LOT 5



INNISFAIL WHR X651/723 4013 ET  
RV 4013 TESTED 0710 ET  
RV LADY TIME 0562 (DOD)  
FTF PROSPECTOR 145Y  
GANT PROSPECTOR 452D  
GANT REVOLUTION 386B

CE	BW	WW	YW	DEMI	SC	SCF	MM	MG
5.7	1.4	68	108	0.4	1.9	18.3	25	59
MCE	MCW	UDDR	TEAT	CW	FAT	REA	MARB	
3.9	89	1.3	1.2	76	0.062	0.46	0.40	
BMI	BII	CHB	BW	WW	YW	Scrotal		
401	506	149	85	690	990	44		

**GANT DECORBY 287 480**  
Bull #44382194

Tag: 480    Tattoo: 287    Polled    BD: 4/13/22

LOT 6



LJR 023R WHITMORE 10W  
NJW 135U 10W DECORBY 27F ET  
NJW 4037 34S DURANGO VACA 135U  
NJW 73S W18 HOMEGROWN 8Y ET  
GANT HOMEGROWN 8Y 421D  
GANT LAMBEAU 372A

CE	BW	WW	YW	DEMI	SC	SCF	MM	MG
1.1	4.6	65	106	0.5	1.2	13.9	35	68
MCE	MCW	UDDR	TEAT	CW	FAT	REA	MARB	
-3.1	96	1.0	1.1	71	0.042	0.32	0.02	
BMI	BII	CHB	BW	WW	YW	Scrotal		
305	380	101	85	665	1080	35		

**GANT DECORBY 202 359**  
Bull #44382209

Tag: 535    Tattoo: 285    Polled    BD: 4/30/22

LOT 7



LJR 023R WHITMORE 10W  
NJW 135U 10W DECORBY 27F ET  
NJW 4037 34S DURANGO VACA 135U  
BAR JZ REBELLION 474X  
GANT RIB EYE 389B  
GANT RIB EYE 287H

CE	BW	WW	YW	DEMI	SC	SCF	MM	MG
2.5	3.0	62	98	0.5	1.2	19.4	22	53
MCE	MCW	UDDR	TEAT	CW	FAT	REA	MARB	
2.8	115	1.0	1.0	60	0.002	0.31	0.09	
BMI	BII	CHB	BW	WW	YW	Scrotal		
381	460	97	90	695	1170	42		

**GANT TESTED 233 564**  
Bull #44382215

Tag: 564    Tattoo: 233 Polled    BD: 5/8/22

LOT 8

INNISFAIL WHR X651/723 4013 ET  
RV 4013 TESTED 0710 ET  
RV LADY TIME 0562 (DOD)  
SLEEPY LEADER 729  
GANT LEADER 489G  
GANT TARGET 414D

CE	BW	WW	YW	DEMI	SC	SCF	MM	MG
2.9	2.2	68	109	0.3	1.9	21.9	22	56
MCE	MCW	UDDR	TEAT	CW	FAT	REA	MARB	
0.8	116	1.1	1.0	60	0.012	0.05	0.24	
BMI	BII	CHB	BW	WW	YW	Scrotal		
429	528	118	88	685	1090	40		



Mark and Sandy Gant  
celebrating their 50th  
Wedding Anniversary



# GANT 2 YEAR OLD HEREFORDS AND ANGUS

**GANT TESTED 232 555**  
Bull #44382214

Tag: 555    Tattoo: 232    Polled    BD: 4/16/22

LOT 9



INNISFAIL WHR X651/723 4013 ET  
**RV 4013 TESTED 0710 ET**  
 RV LADY TIME 0562 (DOD)  
 R ON TARGET 5523  
**GANT TARGET 361F**  
 GANT RIB EYE 296G

CE	BW	WW	YW	DEMI	SC	SCF	MM	MG
4.9	1.8	63	97	0.1	1.9	16.1	27	58
MCE	MCW	UDDR	TEAT	CW	FAT	REA	MARB	
0.7	101	1.2	1.1	70	0.022	0.29	0.28	
BMI	BII	CHB		BW	WW	YW	Scrotal	
361	452	134		85	675	1100	35	

**GANT LEADER 288 544**  
Bull #44382256

Tag: 544    Tattoo: 288    Polled    BD: 4/17/22

LOT 10



R LEADER 6964  
**SLEEPY LEADER 729**  
 BLACKTOP HANNAH 160  
 PYRAMID CATAPULT 6149  
**GANT CATAPULT 407G**  
 GANT ONLINE 267H

CE	BW	WW	YW	DEMI	SC	SCF	MM	MG
1.5	3.8	56	92	0.1	0.6	17.3	23	50
MCE	MCW	UDDR	TEAT	CW	FAT	REA	MARB	
2.6	105	1.0	1.1	66	0.052	0.31	0.07	
BMI	BII	CHB		BW	WW	YW	Scrotal	
361	433	109		80	680	970	40	

**GANT LEADER 227 532**  
Bull #44382210

Tag: 532    Tattoo: 227    Polled    BD: 4/10/22

LOT 11



R LEADER 6964  
**SLEEPY LEADER 729**  
 BLACKTOP HANNAH 160  
 PYRAMID HOMEGROWN 4151  
**GANT HOMEGROWN 390F**  
 GANT RIB EYE 281H

CE	BW	WW	YW	DEMI	SC	SCF	MM	MG
5.5	1.7	50	81	0.0	0.9	16.7	28	53
MCE	MCW	UDDR	TEAT	CW	FAT	REA	MARB	
2.4	103	1.0	1.1	67	0.062	0.36	0.16	
BMI	BII	CHB		BW	WW	YW	Scrotal	
361	432	118		80	670	970	39	

**GANT TESTED 213 470**  
Bull #44382193

Tag: 470    Tattoo: 213    Polled    BD: 5/12/22

LOT 12



INNISFAIL WHR X651/723 4013 ET  
**RV 4013 TESTED 0710 ET**  
 RV LADY TIME 0562 (DOD)  
 BAR JZ REBELLION 474X  
**GANT REBELLION 388C**  
 GANT RIB EYE 268H

CE	BW	WW	YW	DEMI	SC	SCF	MM	MG
4.4	1.4	54	88	0.2	1.4	23.9	22	49
MCE	MCW	UDDR	TEAT	CW	FAT	REA	MARB	
4.0	93	1.3	1.3	63	0.042	0.09	0.36	
BMI	BII	CHB		BW	WW	YW	Scrotal	
463	558	129		80	670	1025	41	



# GANT 2 YEAR OLD HEREFORDS AND ANGUS

**GANT DECORBY 202 359**  
Bull #44382192

Tag: 359    Tattoo: 202    Polled    BD: 4/1/22

LOT 13



LJR 023R WHITMORE 10W  
**NJW 135U 10W DECORBY 27F ET**  
 NJW 4037 34S DURANGO VACA 135U  
 BAR JZ REBELLION 474X  
**GANT REVOLUTION 274C**  
 GANT PROSPECTOR 118

CE	BW	WW	YW	DEMI	SC	SCF	MM	MG
3.7	2.5	60	92	0.4	1.0	18.4	22	52
MCE	MCW	UDDR	TEAT	CW	FAT	REA	MARB	
3.0	121	1.1	1.0	54	0.002	0.23	0.07	
BMI	BII	CHB		BW	WW	YW	Scrotal	
362	437	89		88	670	1180	42	

**GANT LEADER 224 521**  
Bull #44382207

Tag: 521    Tattoo: 224    Polled    BD: 5/6/22

LOT 14



R LEADER 6964  
**SLEEPY LEADER 729**  
 BLACKTOP HANNAH 160  
 R ON TARGET 5523  
**GANT TARGET 430E**  
 GANT REVOLUTION 336A

CE	BW	WW	YW	DEMI	SC	SCF	MM	MG
2.5	3.0	59	94	0.3	0.9	16.2	19	49
MCE	MCW	UDDR	TEAT	CW	FAT	REA	MARB	
2.2	117	1.1	1.1	67	0.062	0.26	0.14	
BMI	BII	CHB		BW	WW	YW	Scrotal	
344	423	110		90	660	965	38	

**GANT DECORBY 216 489**  
Bull #44382199

Tag: 489    Tattoo: 216    Polled    BD: 4/20/22

LOT 15



LJR 023R WHITMORE 10W  
**NJW 135U 10W DECORBY 27F ET**  
 NJW 4037 34S DURANGO VACA 135U  
 R ON TARGET 5523  
**GANT TARGET 414D**  
 GANT LAMBEAU 380A

CE	BW	WW	YW	DEMI	SC	SCF	MM	MG
3.0	2.9	64	100	0.6	1.2	18.2	20	52
MCE	MCW	UDDR	TEAT	CW	FAT	REA	MARB	
1.8	121	1.0	1.0	60	0.012	0.18	0.10	
BMI	BII	CHB		BW	WW	YW	Scrotal	
359	442	94		88	620	100	44	

**GANT STEENSLAND 242 030**  
Bull #44382172

Tag: 030    Tattoo: 242    Polled    BD: 4/29/22

LOT 16



S16 STEENSLAND 31C ET  
**ESF 31C STEENSLAND 903**  
 ESF 028X VIOLET 603  
 PYRAMID CATAPULT 6149  
**GANT CATAPULT 030 371**  
 GANT WRANGLER 371J

CE	BW	WW	YW	DEMI	SC	SCF	MM	MG
6.7	0.9	50	83	0.1	0.9	18.6	30	55
MCE	MCW	UDDR	TEAT	CW	FAT	REA	MARB	
5.4	91	1.2	1.2	73	0.022	0.49	0.04	
BMI	BII	CHB		BW	WW	YW	Scrotal	
389	452	117		70	550	900	39	



# GANT 2 YEAR OLD HEREFORDS AND ANGUS

**GANT DECORBY 210 451**  
Bull #44382189

Tag: 451    Tattoo: 210    Polled    BD: 4/27/22

LOT 17



LJR 023R WHITMORE 10W  
**NJW 135U 10W DECORBY 27F ET**  
 NJW 4037 34S DURANGO VACA 135U  
 BAR JZ REBELLION 474X  
**GANT REBELLION 384B**  
 GANT YANKEE 267J

CE	BW	WW	YW	DEMI	SC	SCF	MM	MG
0.0	4.1	62	100	0.4	1.0	19.7	23	54
MCE	MCW	UDDR	TEAT	CW	FAT	REA	MARB	
1.8	119	1.0	1.0	58	0.002	0.26	0.02	
BMI	BII	CHB		BW	WW	YW	Scrotal	
382	457	90		95	680	1170	41	

**GANT LEADER 205 414**  
Bull #44382184

Tag: 414    Tattoo: 205    Polled    BD: 4/2/22

LOT 18



R LEADER 6964  
**SLEEPY LEADER 729**  
 BLACKTOP HANNAH 160  
 TH 22R 16S LAMBEAU 17Y  
**GANT LAMBEAU 380A**  
 GANT TRADITION 288J

CE	BW	WW	YW	DEMI	SC	SCF	MM	MG
8.9	0.9	47	74	-0.2	0.5	17.6	19	43
MCE	MCW	UDDR	TEAT	CW	FAT	REA	MARB	
4.8	93	1.2	1.2	53	0.072	0.11	0.19	
BMI	BII	CHB		BW	WW	YW	Scrotal	
356	428	103		78	640	955	36	

**GANT LEADER 220 507**  
Bull #44382203

Tag: 507    Tattoo: 220    Polled    BD: 4/11/22

LOT 19



R LEADER 6964  
**SLEEPY LEADER 729**  
 BLACKTOP HANNAH 160  
 JDH AH 349 ABOUT TIME 68A ET  
**GANT ABOUT TIME 317E**  
 GANT PROSPECTOR 302

CE	BW	WW	YW	DEMI	SC	SCF	MM	MG
4.1	2.0	52	82	-0.1	0.7	15.2	23	49
MCE	MCW	UDDR	TEAT	CW	FAT	REA	MARB	
1.4	109	1.1	1.1	62	0.042	0.21	0.14	
BMI	BII	CHB		BW	WW	YW	Scrotal	
331	402	110		85	650	960	37	

**GANT TESTED 221 509**  
Bull #44382204

Tag: 509    Tattoo: 221    Polled    BD: 4/15/22

LOT 20



INNISFAIL WHR X651/723 4013 ET  
**RV 4013 TESTED 0710 ET**  
 RV LADY TIME 0562 (DOD)  
 GANT TRUST 398C  
**GANT TRUST 359E**  
 GANT YANKEE 286G

CE	BW	WW	YW	DEMI	SC	SCF	MM	MG
80	665	970	91	-0.1	1.6	14.9	27	55
MCE	MCW	UDDR	TEAT	CW	FAT	REA	MARB	
0.4	107	1.2	1.1	66	0.012	0.33	0.21	
BMI	BII	CHB		BW	WW	YW	Scrotal	
344	421	131		2.5	55	91	37	



# GANT 2 YEAR OLD HEREFORDS AND ANGUS

**GANT TESTED 206 415**  
Bull #44382185

Tag: 415    Tattoo: 206    Polled    BD: 4/25/22

LOT  
21



INNISFAIL WHR X651/723 4013 ET  
RV 4013 TESTED 0710 ET  
RV LADY TIME 0562 (DOD)  
JDH 15T WRANGLER 25W ET  
GANT WRANGLER 257A  
LV GANT 195

CE	BW	WW	YW	DEMI	SC	SCF	MM	MG
3.4	1.9	52	85	-0.1	1.3	17.2	26	52
MCE	MCW	UDDR	TEAT	CW	FAT	REA	MARB	
1.8	90	1.3	1.2	63	0.022	0.31	0.18	
BMI	BII	CHB		BW	WW	YW	Scrotal	
367	441	120		85	650	1050	42	

**GANT TESTED 214 482**  
Bull #44382197

Tag: 482    Tattoo: 214    Polled    BD: 4/23/22

LOT  
22



INNISFAIL WHR X651/723 4013 ET  
RV 4013 TESTED 0710 ET  
RV LADY TIME 0562 (DOD)  
NJW 73S W18 HOMEGROWN 8Y ET  
GANT HOMEGROWN 8Y 378D  
GANT WRANGLER 286J

CE	BW	WW	YW	DEMI	SC	SCF	MM	MG
3.9	2.4	56	92	0.0	1.6	15.4	29	57
MCE	MCW	UDDR	TEAT	CW	FAT	REA	MARB	
-0.4	100	1.2	1.2	69	0.022	0.32	0.17	
BMI	BII	CHB		BW	WW	YW	Scrotal	
347	424	127		87	680	980	43	

**GANT DECORBY 235 577**  
Bull #44382217

Tag: 577    Tattoo: 235    Polled    BD: 4/16/22

LOT  
23



LJR 023R WHITMORE 10W  
NJW 135U 10W DECORBY 27F ET  
NJW 4037 34S DURANGO VACA 135U  
PYRAMID CATAPULT 6149  
GANT REVOLUTION 452G  
GANT REVOLUTION 386B

CE	BW	WW	YW	DEMI	SC	SCF	MM	MG
4.7	2.7	64	102	0.6	1.2	18.9	22	54
MCE	MCW	UDDR	TEAT	CW	FAT	REA	MARB	
3.4	118	1.0	0.9	63	0.002	0.39	0.04	
BMI	BII	CHB		BW	WW	YW	Scrotal	
374	451	96		80	655	1050	37	

**GANT LEADER 201 20**  
Bull #44382165

Tag: 20    Tattoo: 201    Polled    BD: 4/28/22

LOT  
24



R LEADER 6964  
SLEEPY LEADER 729  
BLACKTOP HANNAH 160  
SHF RIB EYE M326 R117  
GANT KEYNOTE 247G  
LY HIGHWAY 132

CE	BW	WW	YW	DEMI	SC	SCF	MM	MG
4.1	2.5	53	84	0.0	0.8	18.0	21	47
MCE	MCW	UDDR	TEAT	CW	FAT	REA	MARB	
2.1	100	1.2	1.2	63	0.042	0.30	0.17	
BMI	BII	CHB		BW	WW	YW	Scrotal	
375	451	115		84	630	950	35	



# GANT 2 YEAR OLD HEREFORDS AND ANGUS

## GANT DECORBY 211 467

Bull #44382191

Tag: 467 Tattoo: 211 Polled BD: 4/30/22

LJR 023R WHITMORE 10W  
 NJW 135U 10W DECORBY 27F ET  
 NJW 4037 34S DURANGO VACA 135U  
 BAR JZ REBELLION 474X  
**GANT REBELLION 330C**  
 GANT LINE 212

CE	BW	WW	YW	DEMI	SC	SCF	MM	MG
6.6	1.4	54	86	0.3	1.0	18.0	19	46
MCE	MCW	UDDR	TEAT	CW	FAT	REA	MARB	
4.9	115	1.0	1.0	58	0.002	0.31	0.06	
BMI	BII	CHB	BW	WW	YW	Scrotal		
361	430	96	80	600	1110	43		



Mark, Jason,  
and SD Hereford  
Princess  
Mallory Gant  
at the Hereford  
Excellence  
Banquet

LOT  
25

## GANT TESTED 208 430

Bull #44382187

Tag: 430 Tattoo: 208

Polled

BD: 4/30/22



INNISFAIL WHR X651/723 4013 ET  
 RV 4013 TESTED 0710 ET  
 RV LADY TIME 0562 (DOD)  
 BAR JZ REBELLION 474X  
**GANT REVOLUTION 336A**  
 GANT PRECISE 265F

CE	BW	WW	YW	DEMI	SC	SCF	MM	MG
-0.1	95	660	1075	0.3	1.6	16.8	25	58
MCE	MCW	UDDR	TEAT	CW	FAT	REA	MARB	
-1.4	100	1.3	1.2	67	0.032	0.40	0.14	
BMI	BII	CHB	BW	WW	YW	Scrotal		
359	444	118	4.4	66	110	42		

LOT  
26



Mallory Gant receives Grand Champion  
Hereford Heifer at the Charles Mix  
County Achievement Days



Mark's granddaughters  
Metlee, Berklee, and  
Lenlee Mills at Jr  
Olympics Swim Meet



Mark's granddaughters  
Berklee and Lenlee  
Mills at a cross  
country meet



Mallory Gant showing  
"Mia" all summer



## GANT 2 YEAR OLD HEREFORDS AND ANGUS

**GANT PAYWEIGHT 644**

Tag: 644

Tattoo: 204

BD: 4/3/22

LOT  
29



BASIN PAYWEIGHT 1682  
**A & B PAYWEIGHT 7198**  
 A & B LUCY 5294  
 S A V ANGUS VALLEY 1867  
**GANT ANGUS VALLEY 644F**  
 GANT UPGRADE 655D

BW	WW	YW	MM	BW	WW	YW	Scrotal
1.9	59	98	33	88	690	1135	46

**GANT PAYWEIGHT 717**

Tag: 717

Tattoo: 209

BD: 3/17/22

LOT  
30



BASIN PAYWEIGHT 1682  
**A & B PAYWEIGHT 7198**  
 A & B LUCY 5294  
 WAR RESOURCE D237 Z197  
**GANT RESOURCE 717F**  
 GANT UPGRADE 626C

BW	WW	YW	MM	BW	WW	YW	Scrotal
1.1	62	110	28	82	720	1300	36

**GANT PAYWEIGHT 720**

Tag: 720

Tattoo: 218

BD: 3/21/22

LOT  
31



BASIN PAYWEIGHT 1682  
**A & B PAYWEIGHT 7198**  
 A & B LUCY 5294  
 WAR RESOURCE D237 Z197  
**GANT RESOURCE 720F**  
 GANT FOREFRONT 458Z

BW	WW	YW	MM	BW	WW	YW	Scrotal
1.1	63	112	29	70	710	1270	39

**GANT COWBOY UP 741**

Tag: 741

Tattoo: 216

BD: 3/29/22

LOT  
32



HA COWBOY UP 5405  
**A & B COWBOY UP 8115**  
 A & B ERICA 5317  
 WAR RESOURCE D237 Z197  
**GANT RESOURCE 741G**  
 GANT UPGRADE 622B

BW	WW	YW	MM	BW	WW	YW	Scrotal
2	65	126	29	79	710	1250	43



# GANT 2 YEAR OLD HEREFORDS AND ANGUS

## GANT EXCHANGE 734

Tag: 734

Tattoo: 234

BD: 4/15/22

LOT  
33



BARSTOW CASH  
 STYLES EXCHANGE RATE V661  
 PLAINVIEW LASSIE 71B  
 WAR RESOURCE D237 Z197  
 GANT RESOURCE 734F  
 GANT ANSWER 615B

BW	WW	YW	MM	BW	WW	YW	Scrotal
0.4	67	116	29	80	620	1090	40

## GANT PAYWEIGHT 726

Tag: 726

Tattoo: 203

BD: 3/23/22

LOT  
34



BASIN PAYWEIGHT 1682  
 A & B PAYWEIGHT 7198  
 A & B LUCY 5294  
 WAR RESOURCE D237 Z197  
 GANT RESOURCE 726G  
 GANT ANSWER 615B

BW	WW	YW	MM	BW	WW	YW	Scrotal
-0.3	63	99	32	80	600	1075	45

## GANT ENHANCE 750

Tag: 760

Tattoo: 233

BD: 4/2/22

LOT  
35



SYDGEN ENHANCES  
 MOGCK ENHANCE 1419  
 MOGCK ELBA 573  
 MOGCK BULLSEYE 174  
 GANT BULLSEYE 750F  
 GANT UPGRADE 600B

BW	WW	YW	MM	BW	WW	YW	Scrotal
1.7	54	96	31	85	700	1220	44

## GANT PAYWEIGHT 702

Tag: 702

Tattoo: 221

BD: 4/2/22

LOT  
36



BASIN PAYWEIGHT 1682  
 A & B PAYWEIGHT 7198  
 A & B LUCY 5294  
 WAR FINAL ANSWER W018 T219  
 GANT ANSWER 702D  
 GANT 218

BW	WW	YW	MM	BW	WW	YW	Scrotal
0.6	60	98	30	80	760	1320	40



## GANT 2 YEAR OLD HEREFORDS AND ANGUS

**GANT EXCHANGE 683**

Tag: 628

Tattoo: 206

BD: 4/20/22

**LOT  
37**



BARSTOW CASH  
**STYLES EXCHANGE RATE V661**  
 PLAINVIEW LASSIE 71B  
 WAR FINAL ANSWER W018 T219  
**GANT FINAL 683C**  
 GANT NET WORTH 469W

BW	WW	YW	MM	BW	WW	YW	Scrotal
0.9	62	104	33	80	650	1025	44

**GANT PAYWEIGHT 647**

Tag: 647

Tattoo: 224

BD: 3/23/22

**LOT  
38**



BASIN PAYWEIGHT 1682  
**A & B PAYWEIGHT 7198**  
 A & B LUCY 5294  
 MOGCK BULLSEYE 174  
**GANT BULLSEYE 647F**  
 GANT DATELINE 680D

BW	WW	YW	MM	BW	WW	YW	Scrotal
1	59	99	29	88	610	1030	45

**GANT PAYWEIGHT 645**

Tag: 645

Tattoo: 211

BD: 3/28/22

**LOT  
39**



BASIN PAYWEIGHT 1682  
**A & B PAYWEIGHT 7198**  
 A & B LUCY 5294  
 MOGCK BULLSEYE 174  
**GANT BULLSEYE 645F**  
 GANT DATELINE 582D

BW	WW	YW	MM	BW	WW	YW	Scrotal
0.1	63	102	30	85	700	1250	41

**GANT EXCHANGE 617**

Tag: 617

Tattoo: 219

BD: 4/25/22

**LOT  
40**



BARSTOW CASH  
**STYLES EXCHANGE RATE V661**  
 PLAINVIEW LASSIE 71B  
 MOGCK BULLSEYE 174  
**GANT BULLSEYE 617F**  
 GANT DATELINE 503A

BW	WW	YW	MM	BW	WW	YW	Scrotal
0.9	57	98	30	80	620	1040	42



## GANT 2 YEAR OLD HEREFORDS AND ANGUS

### GANT PAYWEIGHT 667

Tag: 667    Tattoo: 213    BD: 4/6/22

BASIN PAYWEIGHT 1682  
A & B PAYWEIGHT 7198  
 A & B LUCY 5294  
 STYLES CONSENSUS P21  
GANT CONSENSUS 667D  
 GANT WINDY 541C

BW	WW	YW	MM	BW	WW	YW	Scrotal
87	685	1140	30	0.5	61	102	44



Dennis and Gloria's  
three grandsons.

LOT  
41

### GANT PAYWEIGHT 626

Tag: 626    Tattoo: 214    BD: 4/2/22



BASIN PAYWEIGHT 1682  
A & B PAYWEIGHT 7198  
 A & B LUCY 5294  
 WAR FINAL ANSWER W018 T219  
GANT ANSWER 626C  
 GANT UPGRADE 526B

BW	WW	YW	MM	BW	WW	YW	Scrotal
0.6	59	99	31	84	675	1105	43

LOT  
42

### GANT EXCHANGE 632

Tag: 632    Tattoo: 216    BD: 5/6/22



BARSTOW CASH  
STYLES EXCHANGE RATE V661  
 PLAINVIEW LASSIE 71B  
 MOGCK BULLSEYE 174  
GANT BULLSEYE 632F  
 GANT ARCHITECT 486X

BW	WW	YW	MM	BW	WW	YW	Scrotal
0.8	59	101	30	78	610	1025	41

LOT  
43

### GANT PAYWEIGHT 708

Tag: 708    Tattoo: 227    BD: 4/2/22



BASIN PAYWEIGHT 1682  
A & B PAYWEIGHT 7198  
 A & B LUCY 5294  
 WAR UPGRADE Y155 U161  
GANT UPGRADE 708D  
 G A NEW WORTH 253F

BW	WW	YW	MM	BW	WW	YW	Scrotal
2.7	40	81	29	85	690	1000	44

LOT  
44



# GANT 2 YEAR OLD HEREFORDS AND ANGUS

## GANT EXCHANGE 675

Tag: 676

Tattoo: 226

BD: 5/1/22

LOT  
45



BARSTOW CASH  
**STYLES EXCHANGE RATE V661**  
 PLAINVIEW LASSIE 71B  
 WAR RESOURCE D237 Z197  
**GANT RESOURCE 675F**  
 GANT ANSWER 615B

BW	WW	YW	MM	BW	WW	YW	Scrotal
0.4	67	116	29	85	620	1090	40

## GANT PAYWEIGHT 731

Tag: 731

Tattoo: 205

BD: 3/19/22

LOT  
46



BASIN PAYWEIGHT 1682  
**A & B PAYWEIGHT 7198**  
 A & B LUCY 5294  
 WAR RESOURCE D237 Z197  
**GANT RESOURCE 731F**  
 GANT UPGRADE 626C

BW	WW	YW	MM	BW	WW	YW	Scrotal
3.3	58	115	30	86	715	1285	43

## GANT ENHANCE 687

Tag: 687

Tattoo: 202

BD: 3/23/22

LOT  
47

SYDGEN ENHANCES  
**MOGCK ENHANCE 1419**  
 MOGCK ELBA 573  
 STYLES CONSENSUS P21  
**GANT CONSENSUS 687D**  
 GANT FOREFRONT 735Z

BW	WW	YW	MM	BW	WW	YW	Scrotal
82	690	1110	29	1.9	54	98	40



Denny and Travis  
 clean up pretty  
 well for  
 Sheldon's wedding  
 March 2023!

## GANT PAYWEIGHT 72

Tag: 72

Tattoo: 201

BD: 4/1/22

LOT  
48

BASIN PAYWEIGHT 1682  
**A & B PAYWEIGHT 7198**  
 A & B LUCY 5294  
 MOGCK BULLSEYE 174  
**GANT BULLSEYE 72F**  
 GANT ANSWER 578D

BW	WW	YW	MM	BW	WW	YW	Scrotal
81	610	1050	31	-1.1	62	96	40



Travis, Jessie,  
 Taylee(12),  
 Truett (2)



# GANT 2 YEAR OLD HEREFORDS AND ANGUS

## GANT EXCHANGE 683

Tag: 683

Tattoo: 220

BD: 4/18/22

LOT  
49



BARSTOW CASH  
**STYLES EXCHANGE RATE V661**  
 PLAINVIEW LASSIE 71B  
 STYLES CONSENSUS P21  
**GANT CONSENSUS 683D**  
 GANT FOREFRONT 458Z

BW	WW	YW	MM	BW	WW	YW	Scrotal
1.1	58	102	30	90	690	1090	40

## GANT EXCHANGE 638

Tag: 638 Tattoo: 223 BD: 4/11/22

LOT  
50



BARSTOW CASH  
**STYLES EXCHANGE RATE V661**  
 PLAINVIEW LASSIE 71B  
 WAR UPGRADE Y155 U161  
**GANT UPGRADE 669D**  
 G A NEW WORTH 253F

BW	WW	YW	MM	BW	WW	YW	Scrotal
72	690	1000	29	2.7	40	81	44

Dennis Gant family at the SD Cattleman's Gala in Sioux Falls, 2023.

## GANT ENHANCE 755

Tag: 755

Tattoo: 232

BD: 4/2/22

LOT  
51



SYDGEN ENHANCES  
**MOGCK ENHANCE 1419**  
 MOGCK ELBA 573  
 MOGCK BULLSEYE 174  
**GANT BULLSEYE 755F**  
 GANT ARCHITECT 726W

BW	WW	YW	MM	BW	WW	YW	Scrotal
1.2	60	91	30	80	580	1000	37

## GANT PAYWEIGHT 686

Tag: 686

Tattoo: 212

BD: 4/2/22

LOT  
52



BASIN PAYWEIGHT 1682  
**A & B PAYWEIGHT 719B**  
 A & B LUCY 5294  
 WAR UPGRADE Y155 U161  
**GANT UPGRADE 686D**  
 GANT FOREFRONT 269

BW	WW	YW	MM	BW	WW	YW	Scrotal
1.9	57	100	31	80	600	1000	41



## GANT 2 YEAR OLD HEREFORDS AND ANGUS

**GANT PAYWEIGHT 680**

Tag: 680

Tattoo: 210

BD: 3/20/22

**LOT  
53**



BASIN PAYWEIGHT 1682  
**A & B PAYWEIGHT 7198**  
 A & B LUCY 5294  
 MOGCK BULLSEYE 174  
**GANT BULLSEYE 680F**  
 GANT FINAL ANSWER 625C

BW	WW	YW	MM	BW	WW	YW	Scrotal
2.1	57	102	29	88	620	1040	43

**GANT EXCHANGE 661**

Tag: 661

Tattoo: 217

BD: 5/6/22

**LOT  
54**



BARSTOW CASH  
**STYLES EXCHANGE RATE V661**  
 PLAINVIEW LASSIE 71B  
 WAR FINAL ANSWER W018 T219  
**GANT ANSWER 661B**  
 GANT NET WORTH 311H

BW	WW	YW	MM	BW	WW	YW	Scrotal
0.5	59	102	30	75	690	1060	45

**GANT ENHANCE 715**

Tag: 715

Tattoo: 229

BD: 3/23/22

**LOT  
55**



SYDGEN ENHANCES  
**MOGCK ENHANCE 1419**  
 MOGCK ELBA 573  
 MOGCK BULLSEYE 174  
**GANT BULLSEYE 715F**  
 GANT UPGRADE 600B

BW	WW	YW	MM	BW	WW	YW	Scrotal
1.7	54	96	31	82	700	1220	44

**GANT ENHANCE 513**

Tag: 713

Tattoo: 208

BD: 4/11/22

**LOT  
56**



SYDGEN ENHANCES  
**MOGCK ENHANCE 1419**  
 MOGCK ELBA 573  
 MOGCK BULLSEYE 174  
**GANT BULLSEYE 513F**  
 GANT ARCHITECT 726W

BW	WW	YW	MM	BW	WW	YW	Scrotal
1.2	60	91	30	83	580	1000	37



# GANT 2 YEAR OLD HEREFORDS AND ANGUS

**BLACK BALDY**

Tag: 718

Tattoo: 228

BD: 5/29/22

LOT  
57



Sire: Hereford Bull  
Dam: Angus Cow

BW	WW	YW	MM	BW	WW	YW	Scrotal
90	640	1050					39

**BLACK BALDY**

Tag: 568

Tattoo: 230

BD: 5/21/22

LOT  
58



Sire: Hereford Bull  
Dam: Angus Cow

BW	WW	YW	MM	BW	WW	YW	Scrotal
85	680	1070					40



# WHOA.

MORE POUNDS. MORE CALVES. MORE PROFIT.

Herefords are known as the efficiency experts for a reason. Herefords boost pregnancy rates by 7% and add \$30 per head in feedyard profitability in a crossbreeding system.

And Hereford genetics bring unrivaled hybrid vigor, longevity and disposition.

**COME HOME TO HEREFORD.**



Hereford.org | 816-842-3757



## **BRED HEREFORD HEIFERS**

**LOTS: 59 - 60 - 61 - 63 - 65 - 66**

**This fancy group of Registered Hereford Heifers are going to add plenty of value to your herd and they are bred to a low birth weight Angus bull. All heifers were preg checked and are due to calve March 29. The heifers were poured last fall and in January they received their two scour shots.**



## **BRED BALDY HEIFERS**

**LOTS: 67-68**

**This stellar group of Baldy Heifers out of an Angus Bull and a Hereford Cow are going to add value and productivity as well as bred to a low birth weight Angus bull. All heifers were preg checked and are due to calve March 29. The heifers were poured last fall and in January they received their two scour shots.**





## **BRED ANGUS HEIFERS**

**These Angus Heifers are the top of the top and they are bred to low birth weight Starr/Varilek Angus bulls. All heifers were preg checked and are due to calve March 27. The heifers were poured last fall and in January they received their two scour shots.**

### **GROUP 1**

**LOTS: 69 - 70 - 71 - 72 - 73 - 74 - 75 - 76 - 77 - 78 - 79 - 80 - 81 - 82 - 83**



### **GROUP 2**

**LOTS: 84 - 85 - 86 - 87 - 88 - 89 - 90 - 91 - 92 - 93 - 94 - 95 - 96 - 97 - 98**









# **GANT** Angus and Polled Hereford Bull Sale

Mark and Denny Gant  
PO Box 15 • Geddes, SD 57342



**Friday, February 23, 2024  
1:00 P.M. AT GANT RANCH**



# SHHH.

THERE'S A LOT OF VALUE IN A QUIET,  
GOOD-DISPOSITIONED COW.

No broken fences. No busted gates. No injured people.

Herefords lead the way when it comes to the  
silent traits — and increase profitability  
by more than \$51 per cow per year  
at the same time.

**COME HOME TO HEREFORD.**



Hereford.org | 816-842-3757

