

Gelbvieh & Red Angus Bull Sale

Friday, April 5, 2024

Platte Livestock Auction, Platte, SD

or live sale day at CattleUSA.com

1 pm CST

Selling 68 Bulls



Lot L24 - selling April 5th

- Offering -

Red & Black • Gelbvieh • Balancer • Red Angus

Visit the livestocklink.com for catalog and videos

HANDEL FARMS

Bruce & Mary Handel & Family

219 S. Pine St., Menno, SD 57045

605-660-5551 • 605-387-5551

bhandel@goldenwest.net

SALE LOCATION

Platte Livestock Market

West Highway 44, Box 905, Platte, SD 57369

Sale Day Phone: 1-800-337-2655

Cell Phone Numbers:

Bruce Handel: 605-660-5551

Jeremy Handel: 605-660-2680

Justin Handel: 605-660-0368

Austin Handel: 605-760-4857

Auctioneer

Brad Veurink
605-680-1281

Sale Consultant

Paul Duxbury
605-350-9268

Local Lodging

King's Inn
1-800-337-7756

PO Box 54, Platte, SD 57369
kingsinn@midstates.net

**Sale will be broadcast live on
CattleUSA.com**

**Call Platte Livestock or any Handel cell
phone to bid.**

All sight unseen purchases are guaranteed to
your satisfaction.

Terms & Conditions

Terms of the sale are cash. Settlement is to be made with the clerk immediately following the sale.

All bulls are guaranteed breeders according to the AGA guidelines. In no event will the seller be responsible for more than the purchase price of the bull.

Handel Farms is retaining 1/3 revenue sharing semen interest in every bull selling in this sale. Full possession and full salvage value sells on all bulls unless otherwise noted.

Bulls are all semen tested, pre-breeding vaccinated, and ready to work. Handel Farms will begin delivery of bulls after the sale.

Haul your bull home the day of the sale and deduct \$100 per bull.

Handel Farms

Gelbvieh & Red Angus

Welcome Cattlemen & Friends,

We are looking forward to having you join us Friday, April 5th at 1 p.m. for our 31st Annual Gelbvieh, Red Angus and Balancer Bull Sale at the Platte Livestock Auction, Platte, S.D.

We will be offering 68 yearling bulls. Select from red and black Balancer, Gelbvieh or Red Angus. Thirty bulls have been identified as homozygous black.

The bulls have been bunk fed a homegrown high roughage ration to enhance growth, soundness and longevity, not fat. These bulls have never seen a creep or self feeder.

Complete performance and EPD's have been provided for your benefit. The bulls are registered and registration papers will be automatically transferred.

Put more pounds and value on your calf crop with proven Gelbvieh, Balancer or Red Angus genetics. We use proven herd sires for calving ease, fertility, growth, carcass and maternal excellence. Many of these bulls have low birth and high growth EPD's. We are more than willing to recommend bulls to meet your specifications.

We invite you to the farm to inspect the cattle; they will be here until April 4th, when they will be moved to Platte Livestock Auction.

If you have any questions, please feel free to contact us.

Hope to see you April 5th -- come early and join us for lunch.

Bruce & Mary Handel & Family

219 S. Pine St., Menno, SD 57045
605-387-5551 • Cell: 605-660-5551
e-mail: bhandel@goldenwest.net

L2	Rebel L2		2/8/2023							
	AMGV1594392	Black	Polled							
72.6% GV 22.6% AN 3.9% AR 0.8% XX										
BW	84	DDGR REBEL 28G								
WW	576	HAND REBEL J52								
YW	1168	HAND LADY HEISMAN F43								
FS	6.0	BDCG DC BUSINESSMAN 401B ET								
SC	NA	HAND LADY BUSINESS J231								
GAIN	3.73	HAND SUNDANCE A208								
CED	BW	WW	YW	MK	TM	CEM	YG	CW	REA	MB
11	0.4	72	106	28	64	6	-0.20	31	0.67	0.26

L6	Eclipse L6		2/9/2023							
	AMGV1594135	Red	Polled							
90.65% GV 6.25% AN 3.1% AR										
BW	87	MCCA CORNHUSKER RED 524C								
WW	611	KHR 03F								
YW	1162	KHR 613D								
FS	5.0	BDCG DC BUSINESSMAN 401B ET								
SC	NA	HAND LADY BUSINESS J199								
GAIN	3.46	HAND LADY INVESTMENT C76								
CED	BW	WW	YW	MK	TM	CEM	YG	CW	REA	MB
16	-1.2	68	102	23	57	8	-0.21	23	0.52	0.14



L6
Gelbvieh

L11	Rebel L11		2/12/2023							
	AMGV1594393	Homo. Black	Polled							
69.5% GV 29.7% AN 0.8% AR 0.1% SA										
BW	62	DDGR REBEL 28G								
WW	491	HAND REBEL J52								
YW	934	HAND LADY HEISMAN F43								
FS	4.0	TOG TWINOAK ASTRONAUT 492C ET								
SC	NA	HAND LADY ASTRONAUT J71								
GAIN	2.79	HAND KABOOM Y29								
CED	BW	WW	YW	MK	TM	CEM	YG	CW	REA	MB
12	0.6	74	109	24	61	7	-0.17	31	0.60	0.40



L11
Balancer

L16	Outcome L16		2/12/2023							
	AMGV1595529	Red	Polled							
6.3% GV 86.7% AR 6.3% AN 0.8% XX										
BW	67	COLLIER FINISHED PRODUCT								
WW	511	DAHLKE OUTCOME 016H								
YW	1020	DAHLKE MS. SANDY 271C								
FS	4.4	ULRICH BENELLI 1919								
SC	NA	HAND LADY BENELLI J187								
GAIN	3.21	HAND LADY PEACEMAKER F346								
CED	BW	WW	YW	MK	TM	CEM	YG	CW	REA	MB
16	0.4	66	110	24	58	10	0.10	26	0.16	.031

L17	Rebel L17		2/12/2023							
	AMGV1594394	Homo. Black	Polled							
72.9% GV 25.8% AN 1.2% AR 0.1% XX										
BW	64	DDGR REBEL 28G								
WW	511	HAND REBEL J52								
YW	963	HAND LADY HEISMAN F43								
FS	4.5	DCSF POST ROCK BLK BAL 327E8								
SC	NA	HAND LADY DISTUISHED J113								
GAIN	2.85	HAND LADY NEBRASKA E197								
CED	BW	WW	YW	MK	TM	CEM	YG	CW	REA	MB
11	0.5	77	116	25	63	7	-0.21	36	0.71	0.41

Can't make it to our sale?

Place your bid by calling:

Platte Livestock Market
1-800-337-2655

Bruce Handel: 605-660-5551
Jeremy Handel: 605-660-2680
Justin Handel: 605-660-0368
Austin Handel: 605-760-4857

L21	Duke L21		2/12/2023							
	AMGV1594363	Black	Polled							
27.3% GV 60.1% AN 12.5% AR 0.1% XX										
BW	88	B BAR WINDY 7 3575								
WW	567	MILLARS DUKE 816								
YW	1182	MILLARS QUEEN LASS 5273								
FS	6.0	DDGR REBEL 28G								
SC	NA	HAND LADY REBEL J60								
GAIN	3.89	HAND LADY PEACEMAKER F121								
CED	BW	WW	YW	MK	TM	CEM	YG	CW	REA	MB
12	-0.8	97	150	29	77	7	0.13	57	0.40	0.40



L21
Balancer

L24	Mr Desperado L24		2/15/2023							
	AMGV1594136	Homo. Black	Polled							
81% GV 15.6% AN 3.1% AR 0.3% XX										
BW	80	MJBC FRANCHISE F806								
WW	608	DBRG MR DESPERADO 0085H								
YW	1243	DBRG MS FH GRANITE 663D								
FS	5.8	DDGR REBEL 28G								
SC	NA	HAND LADY REBEL J78								
GAIN	3.99	HAND LADY PONDEROSA F378								
CED	BW	WW	YW	MK	TM	CEM	YG	CW	REA	MB
14	-0.2	79	126	23	63	7	-0.15	50	0.83	0.36



L24
Gelbvieh

L31	Eclipse L31		2/16/2023							
	AMGV1595424	Red	Polled							
71.9% GV 21.9% AR 6.2% AN										
BW	90	MCCA CORNHUSKER RED 524C								
WW	523	KHR 03F								
YW	1160	KHR 613D								
FS	5.1	DBCM 513C								
SC	NA	HAND LADY MASTER L149								
GAIN	4.01	HAND LADY PEACEMAKER E131								
CED	BW	WW	YW	MK	TM	CEM	YG	CW	REA	MB
16	-1.3	68	101	22	56	8	-0.14	22	0.38	0.14

L34	Draft Pick L34		2/16/2023							
	RAAA4899660	Red	Polled							
99.9% AR 0.1% XX										
BW	76	OVER ZION 674Z								
WW	615	OVER DEPTH CHARGE 410D								
YW	1059	OVER BOSSY 4810B								
FS		ULTRA POWER EYE 1741								
SC	NA	HAND LADY POWER EYE J47								
GAIN		HAND LADY CARDSHARK G13								
CED	BW	WW	YW	MK	TM	CEM	YG	CW	REA	MB
15	-2.7	61	101	26		9	0.07	19	0.12	0.37



L34
Red
Angus

L35	Tops Down L35		2/17/2023							
	AMGV1594137	Red	Polled							
83.3% GV 13.7% AN 3.1% AR										
BW	85	JRI JRI POP A TOP 2 ETN								
WW	518	JLEA TOPS DOWN								
YW	1076	TAU MS DEEP IMPACT 126A 6023D								
FS	4.8	BDCG DC BUSINESSMAN 401B ET								
SC	NA	HAND LADYBUSINESS J239								
GAIN	3.5	HAND LADY NEBRASKA A140								
CED	BW	WW	YW	MK	TM	CEM	YG	CW	REA	MB
16	-2.2	58	86	22	51	6	-0.16	22	0.49	0.15

L37	Duke L37		2/17/2023							
	AMGV1594364	Homo. Black	Polled							
50% GV 50% AN										
BW	67	B BAR WINDY 7 3575								
WW	478	MILLARS DUKE 816								
YW	1016	MILLARS QUEEN LASS 5273								
fS	4.2	DDGR OUTLIER 42F								
SC	NA	HAND LADY OUTLIER J185								
GAIN	3.42	HAND LADY SILVER F3								
CED	BW	WW	YW	MK	TM	CEM	YG	CW	REA	MB
12	-0.8	99	152	26	76	7	0.07	54	0.47	0.28



L37
Balancer

L45	Draft Pick L45		2/23/2023							
		Red	Polled							
25% GV 75% AR										
BW	59	DRAFT PICK AMAR 3548524								
WW	486									
YW	990									
fS										
SC	NA	HAND LADY POWER EYE J27								
GAIN										
CED	BW	WW	YW	MK	TM	CEM	YG	CW	REA	MB



L45
Balancer

L38	Convoy L38		2/17/2023							
	AMGV1594365	Red	Polled							
40.7% GV 59.4% AR										
BW	73	HXC HXC CONQUEST 4405P								
WW	498	PFFR CONVOY 9Z								
YW	1021	PFFR SUN CAN 8X								
fS	4.8									
SC	NA	HAND LADY POWER EYE J45								
GAIN	3.32									
CED	BW	WW	YW	MK	TM	CEM	YG	CW	REA	MB
13	-1.1	72	111	23	59	6	-0.09	19	0.36	0.26

L46	Merlin L46		2/25/2023							
	AMGV1594139	Red	Polled							
34.4% GV 65.7% AR										
BW	76	LJC LJC MERLIN T179								
WW	580	WFL MERLIN 018A								
YW	1165	WFL COMMITMENT 042Y								
fS	4.7	DBCM 513C								
SC	NA	HAND LADY MASTER J212								
GAIN	3.69	HAND LADY RED E39								
CED	BW	WW	YW	MK	TM	CEM	YG	CW	REA	MB
13	-1.6	76	115	29	67	5	-0.20	18	0.53	0.30

L41	Mr Mountain Rain L41		4/21/2023							
	AMGV1594138	Homo. Black	Polled							
49.7% GV 48.9% AN 1.2% AR 0.3% XX										
BW	87	S A V RAINFALL 6846								
WW	522	DBRG MR MOUNTAIN RAIN 1095J								
YW	1076	DBRG MS OUTLOOK 468B								
fS	5.5	DCSF POST ROCK BLK BAL 327E8								
SC	NA	HAND LADY DISTINGUISHED J150								
GAIN	3.49	HAND MOMMA MAKER E51								
CED	BW	WW	YW	MK	TM	CEM	YG	CW	REA	MB
11	0.2	74	120	22	59	7	-0.02	35	0.39	0.44

Thank You
for Attending Our
Annual Production Sale

L75	Midnight Cowboy L75		3/19/2023							
	AMGV1594140	Black	Polled							
75% GV 25% AN										
BW	78	MUSGRAVE COWBOY 668-00649								
WW	524	VRT LAZY TV MIDNIGHT COWBOY J494								
YW	1175	VRT LAZY TV MS COLLEGIAN F169								
FS	5.0	DDGR OUTLIER 42F								
SC	NA	HAND LADY OUTLIER H135								
GAIN	4.1	HAND LADY INVESTMENT E158								
CED	BW	WW	YW	MK	TM	CEM	YG	CW	REA	MB
13	1.1	82	126	27	68	4	-0.18	36	0.73	0.25



L75
Balancer

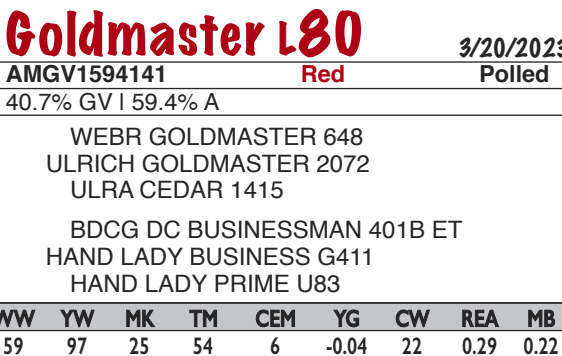
L82	Balancer		3/23/2023							
	AMGV1594143	Black	Polled							
89.9% GV 10.2% AN										
BW	83	CCRO CAROLINA LEVERAGE 3214A								
WW	487	DDGR OUTLIER 42F								
YW	1013	DDGR 206D								
FS	5.1	TOG TWINOAK ASTRONAUT 492C ET								
SC	NA	HAND LADY ASTRONAUT F55								
GAIN	3.3	HAND LADY IMPACT B84								
CED	BW	WW	YW	MK	TM	CEM	YG	CW	REA	MB
12	1.1	80	118	21	61	7	-0.22	27	0.64	0.34



L82
Balancer

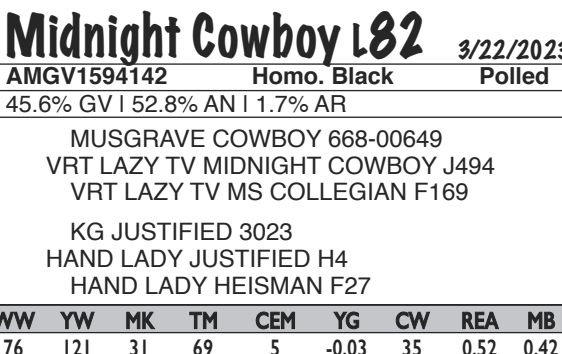
L88	Outlier L88		3/23/2023							
	AMGV1594143	Black	Polled							
89.9% GV 10.2% AN										
BW	83	CCRO CAROLINA LEVERAGE 3214A								
WW	487	DDGR OUTLIER 42F								
YW	1013	DDGR 206D								
FS	5.1	TOG TWINOAK ASTRONAUT 492C ET								
SC	NA	HAND LADY ASTRONAUT F55								
GAIN	3.3	HAND LADY IMPACT B84								
CED	BW	WW	YW	MK	TM	CEM	YG	CW	REA	MB
12	1.1	80	118	21	61	7	-0.22	27	0.64	0.34

L80	Goldmaster L80		3/20/2023							
	AMGV1594141	Red	Polled							
40.7% GV 59.4% A										
BW	78	WEBR GOLDMASTER 648								
WW	391	ULRICH GOLDMASTER 2072								
YW	979	ULRA CEDAR 1415								
FS	4.5	BDCG DC BUSINESSMAN 401B ET								
SC	NA	HAND LADY BUSINESS G411								
GAIN	3.72	HAND LADY PRIME U83								
CED	BW	WW	YW	MK	TM	CEM	YG	CW	REA	MB
10	0.8	59	97	25	54	6	-0.04	22	0.29	0.22

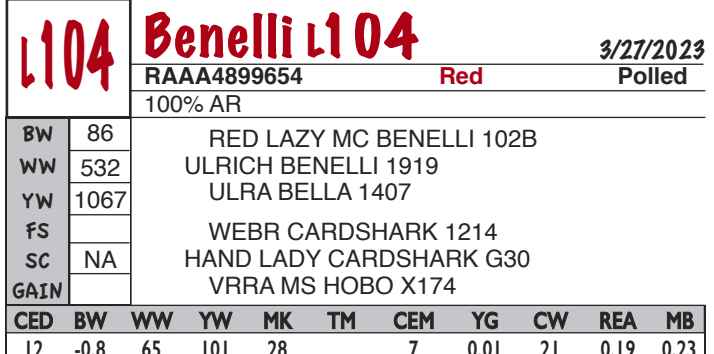


L102	Distinguished L102		3/26/2023							
	AMGV1594892	Homo. Black	Polled							
62.3% GV 36.7% AN 0.8% AR 0.2% XX										
BW	104	VRT LAZY TV DISTINGUISHED C136								
WW	487	DCSF POST ROCK BLK BAL 327E8								
YW	1195	DCSF POST ROCK MISS BOSS 316B8								
FS	6.1	RTC ATLAS 712G								
SC	NA	HAND LADY ATLAS D13								
GAIN	4.46	HAND FINAL ANSWER B324								
CED	BW	WW	YW	MK	TM	CEM	YG	CW	REA	MB
10	0.3	74	117	16	53	7	-0.13	32	0.53	0.54

L82	Midnight Cowboy L82		3/22/2023							
	AMGV1594142	Homo. Black	Polled							
45.6% GV 52.8% AN 1.7% AR										
BW	85	MUSGRAVE COWBOY 668-00649								
WW	621	VRT LAZY TV MIDNIGHT COWBOY J494								
YW	1237	VRT LAZY TV MS COLLEGIAN F169								
FS	5.6	KG JUSTIFIED 3023								
SC	NA	HAND LADY JUSTIFIED H4								
GAIN	3.88	HAND LADY HEISMAN F27								
CED	BW	WW	YW	MK	TM	CEM	YG	CW	REA	MB
14	-0.4	76	121	31	69	5	-0.03	35	0.52	0.42



L104	Benelli L104		3/27/2023							
	RAAA4899654	Red	Polled							
100% AR										
BW	86	RED LAZY MC BENELLI 102B								
WW	532	ULRICH BENELLI 1919								
YW	1067	ULRA BELLA 1407								
FS		WEBR CARDSHARK 1214								
SC	NA	HAND LADY CARDSHARK G30								
GAIN		VRRR MS HOBO X174								
CED	BW	WW	YW	MK	TM	CEM	YG	CW	REA	MB
12	-0.8	65	101	28		7	0.01	21	0.19	0.23



L106		Titanic L106		3/27/2023						
AMGV1594144		Homo. Black		Polled						
84.4% GV 12.5% AN 3.1% AR										
BW	96	DDGR EMULATION 71E								
WW	558	DDGR TITANIC 352H								
YW	1107	DDGR 202E								
FS	5.1	BDCG DC BUSINESSMAN 401B ET								
SC	NA	HAND LADY BUSINESS G91								
GAIN	3.45	HAND FINAL ANSWER Y169								
CED	BW	WW	YW	MK	TM	CEM	YG	CW	REA	MB
11	1.7	74	110	19	56	5	-0.16	20	0.52	0.26

L114		Distinguished L114		3/28/2023						
AMGV1594145		Homo. Black		Polled						
74.8% GV 24.2% AN 0.8% AR 0.2% XX										
BW	79	VRT LAZY TV DISTINGUISHED C136								
WW	532	DCSF POST ROCK BLK BAL 327E8								
YW	1152	DCSF POST ROCK MISS BOSS 316B8								
FS	5.4	BDCG DC BUSINESSMAN 401B ET								
SC	NA	HAND LADY BUSINESS E41								
GAIN	3.9	HAND LADY IMPACT A109								
CED	BW	WW	YW	MK	TM	CEM	YG	CW	REA	MB
10	1.8	75	120	22	59	4	-0.17	35	0.68	0.47

L116		Distinguished L116		3/28/2023						
AMGV1594146		Homo. Black		Polled						
58.7% GV 40.3% AN 0.8% AR 0.2% XX										
BW	74	VRT LAZY TV DISTINGUISHED C136								
WW	503	DCSF POST ROCK BLK BAL 327E8								
YW	1117	DCSF POST ROCK MISS BOSS 316B8								
FS	4.9	GDX 925W								
SC	NA	HAND LADY IMPACT D231								
GAIN	3.87	HAND LADY PENDELTON Z18								
CED	BW	WW	YW	MK	TM	CEM	YG	CW	REA	MB
10	1.5	74	120	20	57	6	-0.09	40	0.56	0.55

L118		Distinguished L118		3/29/2023						
AMGV1594147		Homo. Black		Polled						
46.7% GV 49.2% AN 3.9% AR 0.1% XX										
BW	109	VRT LAZY TV DISTINGUISHED C136								
WW	435	DCSF POST ROCK BLK BAL 327E8								
YW	1105	DCSF POST ROCK MISS BOSS 316B8								
FS	5.2	Connealy Revelation 2353								
SC	NA	VRT LAZY TV MS REVELATION D105								
GAIN	4.22	KRT LAZY TV MS SAM Z398								
CED	BW	WW	YW	MK	TM	CEM	YG	CW	REA	MB
12	0.5	76	127	19	57	7	-0.13	45	0.80	0.63



L118
Balancer

L119		Outlier L119		3/29/2023						
AMGV1594148		Homo. Black		Polled						
81.5% GV 18% AN 0.4% AR 0.2% XX										
BW	116	CCRO CAROLINA LEVERAGE 3214A								
WW	573	DDGR OUTLIER 42F								
YW	1161	DDGR 206D								
FS	6.7	BEAS BEAS 2810Z								
SC	NA	HAND LADY AFLAME F288								
GAIN	3.7	HAND RAMSIS X88								
CED	BW	WW	YW	MK	TM	CEM	YG	CW	REA	MB
11	1.2	81	123	21	61	7	-0.16	35	0.65	0.30

L120		Midnight Cowboy L120		3/30/2023						
AMGV1594149		Homo. Black		Polled						
66.4% GV 33.6% AN										
BW	77	MUSGRAVE COWBOY 668-00649								
WW	527	VRT LAZY TV MIDNIGHT COWBOY J494								
YW	1093	VRT LAZY TV MS COLLEGIAN F169								
FS	4.2	TOG TWINOAK ASTRONAUT 492C ET								
SC	NA	HAND LADY ASTRONAUT H249								
GAIN	3.57	HAND INVESTMENT D5								
CED	BW	WW	YW	MK	TM	CEM	YG	CW	REA	MB
14	0.9	74	113	24	61	4	-0.17	33	0.66	0.28



L120
Balancer

L128		Rebel L128		3/30/2023						
AMGV1595342		Homo. Black		Polled						
79.4% GV 17.1% AN 3.3% AR 0.2% XX										
BW	91	CCRO CAROLINA LEVERAGE 3214A								
WW	514	DDGR REBEL 28G								
YW	1006	DDGR 47E								
FS	5.2	TOG TWINOAK ASTRONAUT 492C ET								
SC	NA	HAND LADY ASTRONAUT G261								
GAIN	3.1	HAND LADY AFLAME B42								
CED	BW	WW	YW	MK	TM	CEM	YG	CW	REA	MB
11	2.0	81	120	25	65	6	-0.23	35	0.80	0.43

L132		Outlier L132		3/30/2023						
AMGV1594150		Homo. Black		Polled						
73.1% GV 26.6% AN 0.4% AR										
BW	86	CCRO CAROLINA LEVERAGE 3214A								
WW	501	DDGR OUTLIER 42F								
YW	982	DDGR 206D								
FS	4.9	BEAS BEAS 2810Z								
SC	NA	HAND LADY AFLAME F321								
GAIN	3.04	HAND KABOOM Y29								
CED	BW	WW	YW	MK	TM	CEM	YG	CW	REA	MB
12	1.2	84	130	19	61	7	-0.12	37	0.60	0.35

L136		Gridmaster L136		3/31/2023						
AMGV1594362		Red		Polled						
43.8% GV 56.3% AR										
BW	96	JRI NEXT STEP 285X72								
WW	499	DBCM 513C								
YW	978	BEA BEA 2002Z								
FS	5.2	MWFS MEADO-WEST TC HARLEY								
SC	NA	MISS HARLEY A75								
GAIN	3.05	VRRRA DYNA X84								
CED	BW	WW	YW	MK	TM	CEM	YG	CW	REA	MB
12	-0.1	55	82	19	47	3	-0.11	13	0.28	0.10

L138		Distinguished L138		3/31/2023						
AMGV1594151		Homo. Black		Polled						
62.3% GV 36.7% AN 0.8% AR 0.2% XX										
BW	98	VRT LAZY TV DISTINGUISHED C136								
WW	481	DCSF POST ROCK BLK BAL 327E8								
YW	1089	DCSF POST ROCK MISS BOSS 316B8								
FS	5.2	GDX 925W								
SC	NA	HAND D298LADY IMPACT								
GAIN	3.83	HAND LADY NOVA U29								
CED	BW	WW	YW	MK	TM	CEM	YG	CW	REA	MB
11	1.4	73	118	20	56	6	-0.16	36	0.63	0.51

L140		Outlier L140		3/31/2023						
AMGV1594152		Black		Polled						
78.2% GV 18.8% AN 3.1% AR										
BW	88	CCRO CAROLINA LEVERAGE 3214A								
WW	536	DDGR OUTLIER 42F								
YW	1093	DDGR 206D								
FS	5.2	BDCG DC BUSINESSMAN 401B ET								
SC	NA	HAND LADY BUSINESS F115								
GAIN	3.51	HAND FINAL ANSWER A137								
CED	BW	WW	YW	MK	TM	CEM	YG	CW	REA	MB
12	0.8	82	125	24	64	7	-0.15	34	0.67	0.32

L142		Outlier L142		4/1/2023						
AMGV1594153		Black		Polled						
81.1% GV 18.8% AN 0.2% AR										
BW	84	CCRO CAROLINA LEVERAGE 3214A								
WW	491	DDGR OUTLIER 42F								
YW	1014	DDGR 206D								
FS	5.7	TOG TWINOAK ASTRONAUT 492C ET								
SC	NA	HAND LADY ASTRONAUT F5								
GAIN	3.29	HAND LADY PENDLETON B5								
CED	BW	WW	YW	MK	TM	CEM	YG	CW	REA	MB
13	0.6	80	121	23	63	7	-0.14	35	0.60	0.40

L142
Gelbvieh

L144		Titanic L144		3/30/2023						
AMGV1594154		Homo. Black		Polled						
94% GV 5.9% AN 0.1% AR										
BW	92	DDGR EMULATION 71E								
WW	504	DDGR TITANIC 352H								
YW	1092	DDGR 202E								
FS	4.2	LRSF LRL HEISMAN D202								
SC	NA	HAND LADY HEISMAN H107								
GAIN	3.68	HAND ALUMNI C33								
CED	BW	WW	YW	MK	TM	CEM	YG	CW	REA	MB
12	2.1	79	122	20	60	6	-0.22	26	0.65	0.25

L146		Rebel L146		4/2/2023						
		AMGV1595425	Homo. Black	Polled						
		76.2% GV 23.4% AN 0.2% AR 0.1% XX								
BW	102	CCRO CAROLINA LEVERAGE 3214A								
WW	535	DDGR REBEL 28G								
YW	1092	DDGR 47E								
FS	5.7	TOG TWINOAK ASTRONAUT 492C ET								
SC	NA	HAND LADY ASTRONAUT G15								
GAIN	3.51	HAND LADY AFLAME B214								
CED	BW	WW	YW	MK	TM	CEM	YG	CW	REA	MB
11	1.8	81	122	24	64	6	-0.21	38	0.80	0.46



L146
Balancer

L166		Benelli L170		4/3/2023						
		RAAA4899652	Red	Polled						
		100% AR								
BW	80	RED LAZY MC BENELLI 102B								
WW	486	ULRICH BENELLI 1919								
YW	1059	ULRA BELLA 1407								
FS		BROWN JYJ REDEMPTION Y1334								
SC	NA	LADY REDEMPTION F141								
GAIN		MISS HARLEY A75								
CED	BW	WW	YW	MK	TM	CEM	YG	CW	REA	MB
13	-1.0	63	101	23		7	0.06	22	0.06	0.31



L166
Gelbvieh

L170		Knucklehead L174		4/3/2023						
		AMGV1594895	Black	Polled						
		83.8% GV 14.1% AN 2% AR 0.2% XX								
BW	91	JRI GUNG HO 282C51								
WW	456	RWG KNUCKLE HEAD 9426								
YW	1032	RWG JASMINE 7423								
FS	5.5	BEAS BEAS 2810Z								
SC	NA	HAND LADY AFLAME B65								
GAIN	3.61	HAND LADY REPLAY X117								
CED	BW	WW	YW	MK	TM	CEM	YG	CW	REA	MB
10	1.8	75	115	21	58	6	-0.12	31	0.56	0.14

L174		Outlier L166		4/3/2023						
		AMGV1594155	Red	Polled						
		17.2% GV 78.1% AR 3.1% AN 1.6% XX								
BW	63	RED LAZY MC BENELLI 102B								
WW	489	ULRICH BENELLI 1919								
YW	1082	ULRA BELLA 1407								
FS	5.0	04CG GALL'S BIG RED 318								
SC	NA	HAND LADY RED G51								
GAIN	3.73	HAND LADY MASTER E11								
CED	BW	WW	YW	MK	TM	CEM	YG	CW	REA	MB
11	0.3	70	106	22	57	6	-0.05	23	0.36	0.17

L176		Outlier L176		4/4/2023						
		AMGV1594156	Black	Polled						
		99.9% GV 0.1% XX								
BW	81	CCRO CAROLINA LEVERAGE 3214A								
WW	502	DDGR OUTLIER 42F								
YW	1135	DDGR 206D								
FS	5.2	TOG TWINOAK ASTRONAUT 492C ET								
SC	NA	HAND LADY ASTRO E213								
GAIN	3.96	HAND LADY PRIME X74								
CED	BW	WW	YW	MK	TM	CEM	YG	CW	REA	MB
13	1.2	83	119	23	64	7	-0.23	28	0.72	0.31

L176		Outlier L176		4/4/2023						
		AMGV1594157	Homo. Black	Polled						
		93.8% GV 6.3% AR								
BW	83	CCRO CAROLINA LEVERAGE 3214A								
WW	545	DDGR OUTLIER 42F								
YW	1162	DDGR 206D								
FS	5.5	BDCG DC BUSINESSMAN 401B ET								
SC	NA	HAND LADY BUSINESS F195								
GAIN	3.87	HAND INVESTMENT A97								
CED	BW	WW	YW	MK	TM	CEM	YG	CW	REA	MB
11	1.0	79	117	24	63	6	-0.23	27	0.70	0.23

L178		Benelli L178		4/4/2023						
AMGV1594158		Red		Polled						
18.8% GV 73.4% AR 6.3% AN 1.6% XX										
BW	84	RED LAZY MC BENELLI 102B								
WW	517	ULRICH BENELLI 1919								
YW	996	ULRA BELLA 1407								
FS	4.7	WFL MERLIN 018A								
SC	NA	HAND LADY MERLIN E22								
GAIN	3.02	HAND LADY PIONEER C314								
CED	BW	WW	YW	MK	TM	CEM	YG	CW	REA	MB
12	0.3	77	118	25	63	6	-0.09	25	0.41	0.27



L178
Balancer

L182		Benelli L182		4/5/2023						
RAAA4899662		Red		Polled						
99.9% AR 0.1% XX										
BW	91	RED LAZY MC BENELLI 102B								
WW	563	ULRICH BENELLI 1919								
YW	1307	ULRA BELLA 1407								
FS		WEBR CARDSHARK 1214								
SC	NA	HAND LADY CARD SHARK F97								
GAIN		HAND LADY OUTERLIMITS D38								
CED	BW	WW	YW	MK	TM	CEM	YG	CW	REA	MB
13	-1.2	66	103	27		7	0.03	19	0.16	0.23

L190		Benelli L190		4/6/2023						
AMGV1594160		Red		Polled						
6.3% GV 92.2% AR 1.6% XX										
BW	77	RED LAZY MC BENELLI 102B								
WW	475	ULRICH BENELLI 1919								
YW	1053	ULRA BELLA 1407								
FS	4.5	LSF BRA NO WORRIES 4657B								
SC	NA	HAND LADY NO WORRIES F33								
GAIN	3.62	HAND CARDSHARK B29								
CED	BW	WW	YW	MK	TM	CEM	YG	CW	REA	MB
13	-2.1	61	103	23	53	8	0.03	23	0.17	0.33

L194		Lifeline L194		4/6/2023						
		Homo. Black		Polled						
50% GV 50% AN										
BW	100	EGL EGL LIFELINE B101								
WW	530	JESE JESE HOMEBOY J 422 ET								
YW	1018	CTR CTR LASS 3200A								
FS		HAND D178								
SC	NA									
GAIN										
CED	BW	WW	YW	MK	TM	CEM	YG	CW	REA	MB

L180		Benelli L180		4/4/2023						
AMGV1594159		Red		Polled						
50% GV 48.4% AR 1.6% XX										
BW	60	RED LAZY MC BENELLI 102B								
WW	508	ULRICH BENELLI 1919								
YW	944	ULRA BELLA 1407								
FS	5.2	BDCG DC BUSINESSMAN 401B ET								
SC	NA	HAND LADY BUSINESS F133								
GAIN	2.78	HAND WIDE ANGLE A104								
CED	BW	WW	YW	MK	TM	CEM	YG	CW	REA	MB
12	1.4	71	108	25	60	6	-0.11	26	0.47	0.17



L180
Balancer

L210		Benelli L210		4/7/2023						
AMGV1594161		Red		Polled						
4.7% GV 92.2% AR 3.1% XX										
BW	75	RED LAZY MC BENELLI 102B								
WW	524	ULRICH BENELLI 1919								
YW	1009	ULRA BELLA 1407								
FS	4.3	04CG GALL'S BIG RED 318								
SC	NA	HAND LADY RED F89								
GAIN	3.04	HAND CARDSHARK B137								
CED	BW	WW	YW	MK	TM	CEM	YG	CW	REA	MB
11	-0.1	67	102	26	60	6	-0.02	22	0.26	0.18

L218**Titanic L218**

4/7/2023

AMGV1594163 Homo. Black Polled
72.3% GV | 27% AN | 0.8% AR

BW	78	DDGR EMULATION 71E
WW	529	DDGR TITANIC 352H
YW	1078	DDGR 202E
FS	4.5	GDX GDX 522C
SC	NA	HAND LADY DUSTY H131
GAIN	3.46	HAND LADY AFLAME F321

CED	BW	WW	YW	MK	TM	CEM	YG	CW	REA	MB
12	0.9	76	117	15	53	7	-0.08	22	0.31	0.35

L228**Knucklehead L228**

4/7/2023

AMGV1594164 Black Polled
82.6% GV | 15.6% AN | 1.6% AR | 0.2% XX

BW	97	JRI GUNG HO 282C51
WW	513	RWG KNUCKLE HEAD 9426
YW	1121	RWG JASMINE 7423
FS	5.8	GKG GKG MR 620 045X
SC	NA	HAND LADY NEBRASKA A140
GAIN	3.82	HAND BLACK ATLAS W52

CED	BW	WW	YW	MK	TM	CEM	YG	CW	REA	MB
10	1.7	73	116	23	60	6	-0.15	37	0.70	0.07

L236**Rebel L236**

4/9/2023

AMGV1594165 Black Polled
92.1% GV | 7.7% AN | 0.1% SA

BW	92	CCRO CAROLINA LEVERAGE 3214A
WW	517	DDGR REBEL 28G
YW	1055	DDGR 47E
FS	5.3	LRSF LRL HEISMAN D202
SC	NA	HAND LADY HEISMAN G271
GAIN	3.37	HAND LADY ALUMNI D21

CED	BW	WW	YW	MK	TM	CEM	YG	CW	REA	MB
12	1.3	81	122	30	70	7	-0.27	34	0.89	0.39

**L236**
Gelbvieh**L238****Benelli L238**

4/9/2023

AMGV1594166 Red Polled
37.1% GV | 51.6% AR | 9.8% AN | 1.6% XX

BW	90	RED LAZY MC BENELLI 102B
WW	504	ULRICH BENELLI 1919
YW	1104	ULRA BELLA 1407
FS	5.1	BDCG DC BUSINESSMAN 401B ET
SC	NA	HAND LADY BUSINESS F109
GAIN	3.8	HAND LADY PIONEER B220H

CED	BW	WW	YW	MK	TM	CEM	YG	CW	REA	MB
11	1.1	71	110	25	60	6	-0.07	26	0.45	0.18

L240**Gridmaster L240**

4/9/2023

AMGV1594896 Red Polled
43.8% GV | 56.3% AR

BW	90	JRI NEXT STEP 285X72
WW	568	DBCM 513C
YW	1067	BEA BEA 2002Z
FS	4.8	WEBR WEBR MULBERRY 963
SC	NA	LADY MULBERRY Z190
GAIN	3.17	VRRR SOPHIE 39W

CED	BW	WW	YW	MK	TM	CEM	YG	CW	REA	MB
12	-0.2	62	96	22	53	4	-0.07	20	0.32	0.13

L246**Outlier L246**

4/10/2023

AMGV1594897 Black Polled
87.5% GV | 9.4% AN | 3.1% AR

BW	85	CCRO CAROLINA LEVERAGE 3214A
WW	547	DDGR OUTLIER 42F
YW	1146	DDGR 206D
FS	6.1	BDCG DC BUSINESSMAN 401B ET
SC	NA	HAND LADY BUSINESS F249
GAIN	3.76	HAND LADY NEBRASKA A60

CED	BW	WW	YW	MK	TM	CEM	YG	CW	REA	MB
11	2.0	84	128	24	66	6	-0.20	34	0.74	0.23

**L246**
Gelbvieh

L248

Rebel L248

4/10/2023

AMGV1594898 Black Polled
67.1% GV | 20.2% AN | 12.5% AR | 0.1% SA

BW	69	CCRO CAROLINA LEVERAGE 3214A									
WW	548	DDGR REBEL 28G									
YW	1067	DDGR 47E									
FS	5.8	GDX 009X									
SC	NA	HAND LADY PIONEER E268									
GAIN	3.28	HAND OUTERLIMIT W60									
CED	BW	WW	YW	MK	TM	CEM	YG	CW	REA	MB	
12	0.6	76	110	28	66	7	-0.19	34	0.73	0.34	

L250

Outlier L250

4/10/2023

AMGV1594899 Black Polled
93.3% GV | 3.6% AN | 3.2% AR

BW	79	CCRO CAROLINA LEVERAGE 3214A									
WW	541	DDGR OUTLIER 42F									
YW	1081	DDGR 206D									
FS	5.3	BDCG DC BUSINESSMAN 401B ET									
SC	NA	HAND LADY BUSINESS F51									
GAIN	3.39	HAND IMPACT A80									
CED	BW	WW	YW	MK	TM	CEM	YG	CW	REA	MB	
13	1.5	81	124	27	67	6	-0.22	33	0.79	0.25	



L250
Gelbvieh

L252

Benelli L252

4/10/2023

Red Polled
25% GV | 75% AR

BW	88	RED LAZY MC BENELLI 102B									
WW	622	ULRICH BENELLI 1919									
YW	1000	ULRA BELLA 1407									
FS											
SC	NA	HAND LADY MASTER F21									
GAIN											
CED	BW	WW	YW	MK	TM	CEM	YG	CW	REA	MB	



L252
Balancer

L274

Knucklehead L274

4/13/2023

AMGV1594900 Black Polled
82.6% GV | 15.6% AN | 1.6% AR | 0.2% XX

BW	87	JRI GUNG HO 282C51									
WW	502	RWG KNUCKLE HEAD 9426									
YW	1156	RWG JASMINE 7423									
FS	5.9	DLW INVESTMENT 422Y OF 408 ET									
SC	NA	HAND INVESTMENT B108									
GAIN	4.11	HAND SUNDANCE Y159									
CED	BW	WW	YW	MK	TM	CEM	YG	CW	REA	MB	
10	0.9	67	100	21	54	6	-0.17	30	0.60	0.12	

L277

Outlier L277

4/13/2023

AMGV1595345 Red Polled
84.8% GV | 8.6% AN | 6.7% AR

BW	88	CCRO CAROLINA LEVERAGE 3214A									
WW	521	DDGR OUTLIER 42F									
YW	1052	DDGR 206D									
FS	5.6	TOG TWINOAK ASTRONAUT 492C ET									
SC	NA	HAND LADY ASTRONAUT F107									
GAIN	3.34	HAND CROSSFIRE B72									
CED	BW	WW	YW	MK	TM	CEM	YG	CW	REA	MB	
12	1.1	81	121	19	60	7	-0.19	32	0.64	0.38	



L277
Gelbvieh

L282	Rebel L282										
			4/13/2023								
		AMGV1595344		Homo. Black		Polled					
		71% GV 28% AN 0.1% SA 0.8% XX									
BW	87	CCRO CAROLINA LEVERAGE 3214A									
WW	571	DDGR REBEL 28G									
YW	1120	DDGR 47E									
FS	5.0	DDGR DDGR PONDEROSA 113D									
SC	NA	HAND LADY PONDEROSA G125									
GAIN	3.46	HAND SUNDANCE A208									
CED	BW	WW	YW	MK	TM	CEM	YG	CW	REA	MB	
10	1.6	78	118	28	68	6	-0.20	36	0.77	0.46	

L284	Knucklehead L284										
			4/13/2023								
		AMGV1594901		Homo. Black		Polled					
		57.6% GV 40.6% AN 1.6% AR 0.2% XX									
BW	97	JRI GUNG HO 282C51									
WW	469	RWG KNUCKLE HEAD 9426									
YW	1106	RWG JASMINE 7423									
FS	5.6	RIVER HILLS FINALANSWER W121									
SC	NA	HAND FINAL ANSWER B128									
GAIN	4.02	HAND THUNDER S141									
CED	BW	WW	YW	MK	TM	CEM	YG	CW	REA	MB	
10	1.2	68	107	22	56	6	0.02	33	0.36	0.33	



L284
Balancer

L294	Outlier L294										
			4/14/2023								
		AMGV1595346		Homo. Black		Polled					
		87.5% GV 12.5% AR									
BW	82	CCRO CAROLINA LEVERAGE 3214A									
WW	641	DDGR OUTLIER 42F									
YW	1164	DDGR 206D									
FS	5.8	GDX 602S									
SC	NA	HAND LADY PRIME A55									
GAIN	3.29	HAND CLASSY LADY Y27									
CED	BW	WW	YW	MK	TM	CEM	YG	CW	REA	MB	
12	0.3	83	120	24	65	7	-0.21	26	0.61	0.29	

L302	Knucklehead L302										
			4/17/2023								
		AMGV1594903		Homo. Black		Polled					
		88.9% GV 9.4% AN 1.6% AR 0.2% XX									
BW	96	JRI GUNG HO 282C51									
WW	494	RWG KNUCKLE HEAD 9426									
YW	1149	RWG JASMINE 7423									
FS	5.9	DLW INVESTMENT 422Y OF 408 ET									
SC	NA	HAND INVESTMENT B264									
GAIN	4.11	HAND LADY PRIME Y127									
CED	BW	WW	YW	MK	TM	CEM	YG	CW	REA	MB	
9	1.4	73	105	24	61	6	-0.17	26	0.56	0.10	



L302
Gelbvieh

L288	Knucklehead L288										
			4/14/2023								
		AMGV1594902		Black		Polled					
		70.1% GV 28.1% AN 1.6% AR 0.2% XX									
BW	101	JRI GUNG HO 282C51									
WW	546	RWG KNUCKLE HEAD 9426									
YW	1108	RWG JASMINE 7423									
FS	5.4	RIVER HILLS FINALANSWER W121									
SC	NA	HAND FINAL ANSWER Y169									
GAIN	3.54	GDX 800U									
CED	BW	WW	YW	MK	TM	CEM	YG	CW	REA	MB	
11	0.5	68	104	23	57	6	-0.03	30	0.44	0.30	

L308	Outlier L308										
			4/17/2023								
		AMGV1594904		Homo. Black		Polled					
		85.9% GV 14.1% AN									
BW	84	CCRO CAROLINA LEVERAGE 3214A									
WW	542	DDGR OUTLIER 42F									
YW	1121	DDGR 206D									
FS	5.2	DDGR DDGR PONDEROSA 113D									
SC	NA	HAND PONDEROSA F32									
GAIN	3.64	HAND LADY INVESTMENT D82									
CED	BW	WW	YW	MK	TM	CEM	YG	CW	REA	MB	
11	0.9	78	118	21	60	7	-0.19	30	0.69	0.38	



L308
Gelbvieh

L322	Benelli L322		4/22/2023							
	AMGV1595426	Red	Polled							
40.7% GV 57.8% AR 1.5% XX										
BW	85	RED LAZY MC BENELLI 102B								
WW	543	ULRICH BENELLI 1919								
YW	1149	ULRA BELLA 1407								
fS	5.5	DBCM 513C								
SC	NA	HAND LADY MASTER G279								
GAIN	3.83	HAND LADY PRIME A55								
CED	BW	WW	YW	MK	TM	CEM	YG	CW	REA	MB
12	0.5	72	108	22	58	6	-0.10	20	0.39	0.17



L322
Balancer

L339	Midnight Cowboy L339		4/28/2023							
	AMGV1595347	Homo. Black	Polled							
68% GV 30.5% AN 1.6% AR										
BW	80	MUSGRAVE COWBOY 668-00649								
WW	536	VRT LAZY TV MIDNIGHT COWBOY J494								
YW	1067	VRT LAZY TV MS COLLEGIAN F169								
fS	5.0	TOG TWINOAK ASTRONAUT 492C ET								
SC	NA	HAND LADY ASTRO H193								
GAIN	3.35	HAND LADY BUSINESS E74								
CED	BW	WW	YW	MK	TM	CEM	YG	CW	REA	MB
13	1.2	75	114	26	63	4	-0.15	30	0.62	0.28



L339
Balancer

L340	Lifeline L340		4/28/2023							
	AMGV1595427	Homo. Black	Polled							
58% GV 35.2% AN 6.7% AR 0.2% XX										
BW	88	EGL EGL LIFELINE B101								
WW	566	JESE JESE HOMEBOY J 422 ET								
YW	1031	CTR CTR LASS 3200A								
fS	4.1	BEAS BEAS 2810Z								
SC	NA	HAND AFLAME D247								
GAIN	2.94	HAND PAYBACK W102								
CED	BW	WW	YW	MK	TM	CEM	YG	CW	REA	MB
12	1.1	72	112	16	52	6	-0.17	34	0.65	0.15

L341	Distinguished L341		4/28/2023							
	AMGV1595348	Homo. Black	Polled							
44.7% GV 53.9% AN 1.2% AR 0.2% XX										
BW	100	VRT LAZY TV DISTINGUISHED C136								
WW	513	DCSF POST ROCK BLK BAL 327E8								
YW	1006	DCSF POST ROCK MISS BOSS 316B8								
fS	5.0	GDX 318A ET								
SC	NA	HAND MISS STARLITE C69								
GAIN	3.11	TMKG LADY STARLIGHT 205X								
CED	BW	WW	YW	MK	TM	CEM	YG	CW	REA	MB
12	-0.2	70	110	17	52	8	-0.02	36	0.38	0.60

L359	Rebel L359		5/10/2023							
	AMGV1595349	Homo. Black	Polled							
78% GV 21.8% AN 0.1% SA										
BW	109	CCRO CAROLINA LEVERAGE 3214A								
WW	620	DDGR REBEL 28G								
YW	1126	DDGR 47E								
fS	6.0	DDGR DDGR PONDEROSA 113D								
SC	NA	HAND LADY PONDEROSA F57								
GAIN	3.18	HAND LADY INVESTMENT C270								
CED	BW	WW	YW	MK	TM	CEM	YG	CW	REA	MB
10	1.6	80	119	26	66	6	-0.22	34	0.78	0.45

Ulrich Benelli 1919AMAR4143546 **Red** Polled
100% AR 1/23/2019

BW	92	NJCM RED NCJ LAZY MC VENOM 34Z RED LAZY MC BENELLI 102B RED LAZY MC MISS FIREFLY 36Z										
Adj. WW	624											
Adj. 365 YW	0											
SC	0											
*WMA RED NORTHLINE FAT TONY 605U ULTRA BELLA 1407 896X ULTRA												
CED	BW	WW	YW	MK	TM	CEM	ST	YG	CW	REA	MB	FT
12	1.1	75	118	23	60	7	11	0.02	27	0.26	0.22	0.01

DBCM 513c (Gridmaster)AMGV1313228 **Red** Polled
87.5GV/12.5AR 3/5/2015

BW	79	JRI Pop A Top 197T83 JRI Next Step 285x72 JRI Ms Butterscotch285T62 ET										
Adj. WW	665											
Adj. 365 YW	1282											
SC	36.3	BEA 801U ET BEA BEA 2002Z BEA 637S										
CED	BW	WW	YW	MK	TM	CEM	ST	YG	CW	REA	MB	FT
13	0.0	63	100	18	49	2	9	-0.16	30	0.70	0.09	-0.01

LAZY TV Midnight Cowboy J494AMGV1353879 **Homo. Black** **Homo. Polled**
50% GV | 50% AN 2/5/2021

BW	86	HA COWBOY UP 5405 MUSGRAVE COWBOY 668-00649 FLAG QUEEN W 0064										
Adj. WW	779											
Adj. 365 YW	1401											
SC	40.2	DCH HILLE COLLEGIAN C134 VRT LAZY TV MS COLLEGIAN F169 VRT LAZY TV MS PWRHOUSE X527										
CED	BW	WW	YW	MK	TM	CEM	ST	YG	CW	REA	MB	FT
15	1.1	83	133	32	73	2	17	-0.07	43	0.69	0.28	0.00

DDGR 42f (Outlier)AMGV1431966 **Black** Polled
93.3GV/6.3AN/0.1AR/0.3XX 3/6/2018

BW	89	VRT Lazy TV Sam U451 CCRO Carolina Leverage 3214A CCRO Belle of the Ball 1309Y										
Adj. WW	807											
Adj. 365 YW	1501											
SC	39.8	DCSF Post Rock Captain 153Z2 DDGR 206D DDGR Sheeza Dream 93W										
CED	BW	WW	YW	MK	TM	CEM	ST	YG	CW	REA	MB	FT
11	1.8	97	148	23	71	8	18	-0.21	42	0.88	0.29	-0.03

RWG Knucklehead 9426CDGV170290 **Black** Polled
90.21% GV | 6.274% AN | 3.125% AR | 0.391% XX 4/8/2019

BW	99	JRI HOSS 293A43 ET JRI GUNG HO 282C51 JRI MS FRANKIE 282R11										
Adj. WW	898											
Adj. 365 YW	1371											
SC	41.4	JRI SANTIAGO 37C31 RWG JASMINE 7423 RWG JASMINE 5711										
CED	BW	WW	YW	MK	TM	CEM	ST	YG	CW	REA	MB	FT
9	2.0	76	119	27	65	6	14	-0.08	39	0.64	0.06	0.00

DCSF Post Rock Blk Bal 327ESAMGV1420332 **Homo. Black** Polled
49.609GV/48.438AN/1.563AR/0.391XX 10/2/2017

BW	87	V A R Discovery 2240 VRT Lazy TV Distinguished C136 VRT Lazy TV Stella W413										
Adj. WW	599											
Adj. 365 YW	1355											
SC		CTR CTR Momma Maker 0056X DCSF Post Rock Miss Box 316B8 DCSF Post Rock Miss Boxx 232X8										
CED	BW	WW	YW	MK	TM	CEM	ST	YG	CW	REA	MB	FT
11	-4	78	134	11	50	6	12	-0.15	47	0.80	0.73	-0.02

DDGR Rebel 28cAMGV1446793 **Homo. Black** Polled
83.765GV/15.43AN/0.195AR/0.61XX 3/6/2019

BW	91	VRT Lazy TV Sam U451 CCRO Carolina Leverage 3214A CCRO Belle of the Ball 1309Y										
Adj. WW	798											
Adj. 365 YW	1190											
SC	37.2	BNC At Ease A357 DDGR 47E DDGR 200C										
CED	BW	WW	YW	MK	TM	CEM	ST	YG	CW	REA	MB	FT
10	1.5	87	120	31	74	8	9	-0.22	45	0.88	0.52	-0.04

Notes

Below is a breakdown of the bulls in the sale, showing which are Red Angus, Balancer or Gelbvieh. This listing allows you to quickly find the lots that fit your needs. **Red** numbers signify red bulls, black numbers signify black bulls, and **bold** black numbers signify homozygous black bulls.

Red Angus AR	Percentage 13%	Balancer BA25	Balancer BA38
L34	L16	L21	L38
L104	L152	L45	L46
L170	L178	L252	L238
L182	L190		L240
	L210		L322

Balancer BA50	Balancer BA63	Balancer BA75	Gelbvieh PB88/PB94
L37	L11	L2	L6
L41	L102	L17	L24
L80	L116	L31	L35
L82	L120	L75	L88
L118	L138	L114	L106
L136	L248	L128	L119
L180	L284	L132	L142
L194	L339	L140	L144
L341	L340	L146	L166
		L218	L174
		L282	L176
		L288	L228
		L359	L236
			L246
			L250
			L274
			L277
			L294
			L302
			L308

Thank You

for attending our Annual Production Sale