

# LaDue Angus Ranch

“Striving for Excellence”

**13th Annual BULL SALE**  
**Thursday, April 18, 2024**  
**1:00pm MT**

*AT THE SALE FACILITY IN MEADOW, SD on Hwy 20*



**SELLING 70 TWO YEAR OLD BULLS**

**A.I. Sires:**

**SAV Resource, OCC Emblazon, WT Beaver Creek, WT NewCastle**

**Kent and Janet LaDue - 605.788.2969**

**Brian LaDue - 605.890.1759**

**[www.sunriseangusranch.com](http://www.sunriseangusranch.com)**

***“Seek the Lord while He may be found” - Isaiah 55:6***

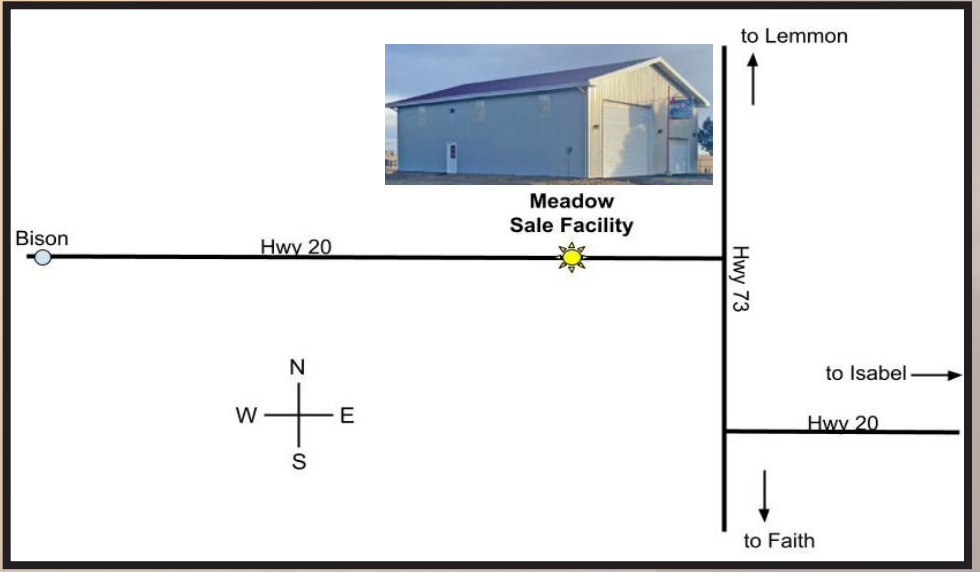


# Thursday April 18, 2024 at 1:00pm MT.

**Selling 70 Two Year Old Angus Bulls  
at the Sale Facility in Meadow, SD**

Look for the sign on the north side of Hwy 20 in Meadow!

- from Bison:** 12 miles east on Hwy 20
- from Lemmon:** 30 miles south on Hwy 73 and 1.5 miles west on Hwy 20
- from Faith:** 3 miles west of Faith on Hwy 212, 32 miles north on Hwy 73, 1.5 miles west on Hwy 20
- from Isabel:** 38 miles west on Hwy 20, 6 miles north on Hwy 73, 1.5 miles west on Hwy 20



## INDEX

SALE INFORMATION.....Pages 4-5

REFERENCE SIRES .....Pages 6-7

RESOURCE BULLS  
Lots 201-210.....Pages 8-10

EMBLAZON BULLS  
Lots 211-238.....Pages 10-14

BEAVER CREEK BULLS  
Lots 239-244.....Pages 14-15

NEW CASTLE BULLS  
Lots 246-253.....Page 16

REGISTERED BULLS  
Lots 254-262.....Page 17-18

LAR 580 BULLS  
Lots 274-2104.....Pages 19-22

ZOETIS HD50K  
TEST RESULTS.....Page 23-25



### WELCOME TO OUR SALE!

Hello and welcome to our 2024 Bull Sale! As we prepare for this year's sale, I can't help but be overwhelmed with the way the Lord has blessed us this year. James 1:17 says "Every good and perfect gift is from above and comes down from the Father of the Heavenly lights who does not change like shifting shadows." I am so thankful to know from whom every good thing in my life comes from and that we can have a relationship with Him.

Our goal continues to be breeding and developing well-balanced cattle that will function in our climate and work for you. On our ranch the main focus is the female. We select sires that will build the cow that works for us and doesn't demand that we work for them. We always have the commercial cattleman in mind. Every cow we have is expected to calve, mother, and raise her calf with minimal assistance from us.

The bulls in this year's offering have been developed slowly on a roughage only ration as calves and summered on grass as yearlings. All bulls are virgin and have had a breeding soundness exam and passed a semen test. Production data and scrotal measurements are listed for each bull. Zoetis HD50K test results are also listed by each bull as well as a comprehensive list on pages 23-24 in order to easily compare.

If you are unable to attend the sale, please contact us and we can arrange for someone to assist you. You can register and bid online at [www.DVAuction.com](http://www.DVAuction.com). Be sure to register in advance to be approved before sale day.

Whether you are a returning customer or looking for the first time, we THANK YOU for your interest in our program. As always, please reach out with any questions or concerns about the bulls.

Please join us outside the sale facility (weather permitting) for lunch before the sale, Thursday April 18, 2024 at the Meadow Sale Facility. Thank you again!

SEE YOU THERE!

Kent, Janet, and Brian LaDue, Brittney & Charlie Rossow, Bethany & Caleb Hunt



We are excited to announce that our family is growing! Our daughter Beth and her husband Caleb are very excited as they enter the journey into parenthood and we are thrilled to become grandparents.

Beth is due to calve in September! 😊

## Sale Information

### Contact Information:

Kent & Janet LaDue  
14478 Rabbit Creek Road  
Meadow, SD 57644  
605-788-2969  
kjladue@gmail.com  
[www.sunriseangusranch.com](http://www.sunriseangusranch.com)

### Sale Day Contacts:

Kent cell: 605-490-1004  
Brian cell: 605-890-1759  
Sale Facility phone: 605-788-2500

### Auctioneer:

Seth Weishaar: 605-210-1124

### Ringmen:

Dan Piroutek - 605-544-3316  
Beau Ravellette - 605-685-8155  
Donnie Leddy - 605-695-0113

### Feed:

Our bulls are summered on milk and grass **without** creep feed. At weaning, they are fed a roughage ration and free choice hay and summered on grass as yearlings. They have been developed on a complete mineral program. Our desire is to ensure soundness and longevity and to condition them to work in your pasture.

### Herd Health:

- At Branding and Pre-weaning: Vision 7 with Somnus, Vista Once SQ
- At Weaning: Inforce 3, Vision 7 with Somnus, Multi-Min
- In January & April: poured with Clean Up II
- April: Two shots of Fusoguard (foot rot) vaccine
- April: All bulls have passed a Breeding Exam/Semen test by Dr. Bleaux Johnson of West River Veterinary Clinic
- Zoetis HD50K Tested
- Tested BVD free

### Delivery:

Receive a \$200 discount per bull if you haul on sale day, or we will deliver the bulls at the buyer's earliest convenience unless other arrangements are made. Free delivery within 300 miles.

### Guarantee:

We guarantee all bulls against injury that would keep them from breeding for the 1st season. If injury occurs and the bull is returned to us, credit is given for next year's sale, or a replacement will be provided if available. It is the buyer's choice which option is more satisfactory. Please notify us as soon as possible should injury occur. Claims must be made by 10-1-24. This guarantee does not cover death. Buyer's satisfaction is our guarantee.

### Why 2 Year Olds:

- Developed on grass, not pushed
- More mature at breeding = more years of service
- Structurally sound feet
- Able to cover more cows than a yearling bull

## Zoetis HD50K Testing

**What is it?** - HD50K for Angus is a DNA genotyping technology from Zoetis designed for Angus producers and fully endorsed by the American Angus Association and Angus Genetics, Inc. Performing this test on each bull provides percentiles that compare over 1.3 million cattle in the Angus breed so we can continue offering the best cattle possible.

**Why is it useful?** - It provides us as a seedstock producer with information to use to make culling decisions on bulls that just don't meet the mark and it can help producers more accurately choose the right bull that will best fit in with their herd. It helps to provide comprehensive genetic and management solutions for beef producers. Select mate, and market cattle with more confidence by using this data.

**By each bull, you will find 20 data points listed as percentiles to help with your selection decisions. There is also a side by side chart in the back of the catalog to serve as a quick reference and to compare bulls side by side with ease.**

**We provide you this information so as to help you make decisions, not to confuse you so if you have questions, please let us know and we will do our best to explain!**

If you are unable to attend the sale, please visit [www.DVAuction.com](http://www.DVAuction.com) to bid. Be sure to register in advance to be approved before sale day.

Videos of each of the bulls will be available for viewing approximately 2 weeks prior to sale day on [www.theLivestockLink.com](http://www.theLivestockLink.com) and [www.DVAuction.com](http://www.DVAuction.com)

Video services by:

**The Livestock Link**  
[www.thelivestocklink.com](http://www.thelivestocklink.com)  
605.210.1956

**This sale will be broadcast live on the internet.**

# DVAuction

**Broadcasting Real-Time Auctions**

**Real time bidding & proxy bidding available.**

Watch & Bid online for FREE!

Can't make the sale?  
Let DVAuction bring the sale to you!

Busy during the sale?  
Let DVAuction represent your bid!

Visit [www.dvauction.com](http://www.dvauction.com) and Register!

1. Create an account at [www.DVAuction.com](http://www.DVAuction.com) under the "Create new account" tab
2. Apply for bidding by clicking "apply for bidding" in the upper left corner of your screen. Do this at least 24 hours prior to the auction.
3. Tune in on sale day and make your purchases!

For general questions, please contact the DVAuction Office:  
402-316-5460 or email at [support@dvauction.com](mailto:support@dvauction.com)

\*High Speed Internet Access Required for bidding\*

# REFERENCE SIRES

**S A V Resource 1441**  
**Reg: AAA 17016597**  
**Birth Date: 01/07/2011**

Resource is a sire known for his body mass, efficient conversion, and phenotypic power. His daughters will be his greatest legacy with tremendous udders and excellent disposition. Resource is one of the most consistent sires we have used.



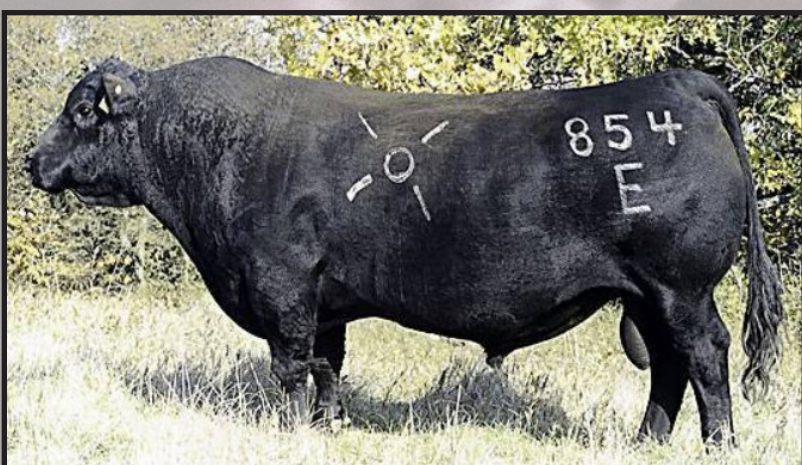
PRODUCTION				
CED	BW	WW	YW	Milk
-1	+4.0	+69	+130	+17
.89	.98	.98	.97	.95

R R Rito 707  
 Rito 707 of Ideal 3407 7075  
 Ideal 3407 of 1418 076

S A V 8180 Traveler 004  
 S A V Blackcap May 4136  
 S A V May 2397

**O C C Emblazon 854E**  
**Reg: AAA 12514348**  
**Birth Date: 03/19/1995**

Emblazon has depth, length, volume, and muscle. The Emblazon daughters are sound, easy fleshing females with beautiful udders. Emblazon is maintaining his place in history producing impeccable females.



PRODUCTION				
CED	BW	WW	YW	Milk
+12	+3	+44	+71	+16
.91	.97	.97	.95	.95

Q A S Traveler 23-4  
 D H D Traveler 6807  
 Bemindful Maid D H D 0807

PBC 707 1M F0203  
 Dixie Erica of C H 1019  
 Dixie Erica of C H 615

**WT Beaver Creek 118**  
**Reg: AAA 17523574**  
**Birth Date: 04/06/2011**

Beaver Creek is a low input powerhouse matched with calving ease and a strong build. This year's group of Beaver Creek bulls are the most consistent we've ever had. He continues to prove himself year after year in our herd. Some of our most masculine males and feminine females are out of Beaver Creek.



PRODUCTION				
CED	BW	WW	YW	Milk
+8	-1.0	+39	+71	+16
.37	.80	.75	.66	.41

Gorthy of Graham 18866  
 M C C Mule Creek 805  
 O C C Dixie Erica 704H

MH Tank 54  
 MH Frances 8180  
 MH Frances 4138

# REFERENCE SIRES

**WT NewCastle Z241**  
**Reg: AAA 18735431**  
**Birth Date: 5/1/2012**

We absolutely love the heifers he produces. The Newcastle bred heifers we have really stand out. They are moderate framed and have a ton of capacity. They are excellent cows that will make their own living



PRODUCTION				
CED	BW	WW	YW	Milk
+9	-.3	+25	+53	+20
.32	.67	.61	.42	.26

Glanworth Waigroup 130-03  
 WT Worth It 81  
 MH Whitney 2113

O C C Homer 650H  
 MH Dixie Erica 622  
 MH Dixie Erica 3122

**PPA Scotts 72**  
**Reg: AAA 18974454**  
**Birth Date: 4/26/2017**

If you are looking for easy fleshing and easy on the eye, check out this bull's sons in the sale. He is backed with maternal genetics that will last many years in your herd.



PRODUCTION				
CED	BW	WW	YW	Milk
+10	-.5	+36	+66	+23
.20	.38	.33	.14	.16

PPA Cortachy Boy 16  
 PPA Cortachy Boy 310  
 PPA 807 Princess 012

N Bar Prime Time D806  
 PPA 807 Princess 321  
 PPA 826 Princess 807

**\*Sire to lots 256, 258, 261**

**LAR 580-129**  
**Birth Date: 4/13/2015**

580 is one of our herd bulls that has continued to impress us over the years. He is a paternal sired Final Answer and a maternal sired Matrix bull which is one of our favorite combos. His daughters are outstanding with udder structures that are second to none.



PRODUCTION				
BW	ADJ WW	WWRATIO	YWRATIO	ADJ YW
<b>73</b>	<b>627</b>	<b>101</b>	<b>89</b>	<b>979</b>

Sitz Traveler 8180  
 S A V Final Answer 0035  
 S A V Emulous 8145

B C Matrix 4132  
 LAR Esther 129  
 LAR Esther 725

# Resource Sons

## 201

LAR Resource 201-118  
Birth Date: 5/4/2022

Rito 707 of Ideal 3407 7075  
S A V Resource 1441  
S A V Blackcap May 4136  
DAM: Matrix daughter

PRODUCTION				
BW	ADJ WW	WWRATIO	YWRATIO	ADJ YW
85	728	111	116	1000

CED	BW	WW	YW	YH	MW	MH	Claw	Angle	DMI
87	72	12	25	23	37	46	1	2	65

HP	CEM	MILK	SC	DOC	CW	FAT	RE	MARB	TEND
19	100	69	83	58	19	11	9	91	5

SCROTAL MEASUREMENT  
**35.5 cm**



### 201

## 202

LAR Resource 202-451  
Birth Date: 5/5/2022

Rito 707 of Ideal 3407 7075  
S A V Resource 1441  
S A V Blackcap May 4136  
DAM: Matrix daughter

PRODUCTION				
BW	ADJ WW	WWRATIO	YWRATIO	ADJ YW
88	713	109	106	894

CED	BW	WW	YW	YH	MW	MH	Claw	Angle	DMI
48	18	22	61	50	62	52	2	33	96

HP	CEM	MILK	SC	DOC	CW	FAT	RE	MARB	TEND
67	88	24	53	70	32	85	31	92	43

SCROTAL MEASUREMENT  
**37 cm**



### 202

## 203

LAR Resource 203-281  
Birth Date: 5/8/2022

Rito 707 of Ideal 3407 7075  
S A V Resource 1441  
S A V Blackcap May 4136  
DAM: Matrix daughter

PRODUCTION				
BW	ADJ WW	WWRATIO	YWRATIO	ADJ YW
87	642	98	100	826

CED	BW	WW	YW	YH	MW	MH	Claw	Angle	DMI
84	65	9	46	19	5	13	58	45	78

HP	CEM	MILK	SC	DOC	CW	FAT	RE	MARB	TEND
24	77	66	2	89	8	53	2	100	26

SCROTAL MEASUREMENT  
**42 cm**

## 204

LAR Resource 204-588  
Birth Date: 5/6/2022

Rito 707 of Ideal 3407 7075  
S A V Resource 1441  
S A V Blackcap May 4136  
DAM: #588

PRODUCTION				
BW	ADJ WW	WWRATIO	YWRATIO	ADJ YW
87	736	112	110	934

CED	BW	WW	YW	YH	MW	MH	Claw	Angle	DMI
42	45	29	73	71	26	54	12	47	30

HP	CEM	MILK	SC	DOC	CW	FAT	RE	MARB	TEND
39	74	95	92	70	57	5	2	100	39

SCROTAL MEASUREMENT  
**36.5 cm**



### 204

## 205

LAR Resource 205-261  
Birth Date: 5/9/2022

Rito 707 of Ideal 3407 7075  
S A V Resource 1441  
S A V Blackcap May 4136  
DAM: Matrix daughter

PRODUCTION				
BW	ADJ WW	WWRATIO	YWRATIO	ADJ YW
84	705	108	108	918

CED	BW	WW	YW	YH	MW	MH	Claw	Angle	DMI
90	73	13	74	21	26	38	6	8	56

HP	CEM	MILK	SC	DOC	CW	FAT	RE	MARB	TEND
77	45	97	28	30	41	21	34	99	79

SCROTAL MEASUREMENT  
**40 cm**



### 205

## 206

LAR Resource 206-122  
Birth Date: 5/10/2022

Rito 707 of Ideal 3407 7075  
S A V Resource 1441  
S A V Blackcap May 4136  
DAM: Matrix daughter

PRODUCTION				
BW	ADJ WW	WWRATIO	YWRATIO	ADJ YW
86	669	102	97	802

CED	BW	WW	YW	YH	MW	MH	Claw	Angle	DMI
49	36	72	63	70	62	74	16	22	36

HP	CEM	MILK	SC	DOC	CW	FAT	RE	MARB	TEND
69	95	37	24	46	64	7	20	99	66

SCROTAL MEASUREMENT  
**38 cm**



### 2023 Branding Crew

## 207

LAR Resource 207-739  
Birth Date: 5/8/2022

Rito 707 of Ideal 3407 7075  
S A V Resource 1441  
S A V Blackcap May 4136  
DAM: Matrix daughter

PRODUCTION				
BW	ADJ WW	WWRATIO	YWRATIO	ADJ YW
81	686	105	108	914

CED	BW	WW	YW	YH	MW	MH	Claw	Angle	DMI
84	78	24	47	33	52	65	3	6	75

HP	CEM	MILK	SC	DOC	CW	FAT	RE	MARB	TEND
49	99	73	79	65	67	81	76	82	88

SCROTAL MEASUREMENT  
**39 cm**



### 207

## 208

LAR Resource 208-267  
Birth Date: 5/9/2022

Rito 707 of Ideal 3407 7075  
S A V Resource 1441  
S A V Blackcap May 4136  
DAM: Matrix daughter

PRODUCTION				
BW	ADJ WW	WWRATIO	YWRATIO	ADJ YW
90	725	111	107	946

CED	BW	WW	YW	YH	MW	MH	Claw	Angle	DMI
94	94	36	32	19	59	29	4	5	43

HP	CEM	MILK	SC	DOC	CW	FAT	RE	MARB	TEND
33	81	79	44	36	61	31	16	100	56

SCROTAL MEASUREMENT  
**38.5 cm**



### 208

# 209 LAR Resource 209-746

Birth Date: 5/5/2022

Rito 707 of Ideal 3407 7075  
S A V Resource 1441  
S A V Blackcap May 4136  
DAM: Matrix daughter

PRODUCTION				
BW	ADJ WW	WWRATIO	YWRATIO	ADJ YW
87	649	99	99	820

CED	BW	WW	YW	YH	MW	MH	Claw	Angle	DMI
30	29	77	75	63	88	57	20	5	49

HP	CEM	MILK	SC	DOC	CW	FAT	RE	MARB	TEND
82	74	87	71	95	63	4	18	95	21

SCROTAL MEASUREMENT  
**37.5 cm**

# 210 LAR Resource 210-747

Birth Date: 5/4/2022

Rito 707 of Ideal 3407 7075  
S A V Resource 1441  
S A V Blackcap May 4136  
DAM: Matrix daughter

PRODUCTION				
BW	ADJ WW	WWRATIO	YWRATIO	ADJ YW
80	617	94	106	896

CED	BW	WW	YW	YH	MW	MH	Claw	Angle	DMI
38	45	34	62	82	61	85	13	61	40

HP	CEM	MILK	SC	DOC	CW	FAT	RE	MARB	TEND
97	90	75	80	73	71	59	11	100	45

SCROTAL MEASUREMENT  
**38.5 cm**



**210**

## Emblazon Sons

# 212 LAR Emblazon 212-462

Birth Date: 5/10/2022

D H D Traveler 6807  
O C C Emblazon 854E  
Dixie Erica of C H 1019  
DAM: Dash daughter

PRODUCTION				
BW	ADJ WW	WWRATIO	YWRATIO	ADJ YW
83	605	92	96	790

CED	BW	WW	YW	YH	MW	MH	Claw	Angle	DMI
28	38	91	85	98	81	97	79	95	32

HP	CEM	MILK	SC	DOC	CW	FAT	RE	MARB	TEND
89	97	81	84	49	82	87	89	91	92

SCROTAL MEASUREMENT  
**38 cm**

# 214 LAR Emblazon 214-533

Birth Date: 4/29/2022

D H D Traveler 6807  
O C C Emblazon 854E  
Dixie Erica of C H 1019  
DAM: Final Answer daughter

PRODUCTION				
BW	ADJ WW	WWRATIO	YWRATIO	ADJ YW
78	662	101	99	820

CED	BW	WW	YW	YH	MW	MH	Claw	Angle	DMI
12	21	70	86	93	61	92	37	82	23

HP	CEM	MILK	SC	DOC	CW	FAT	RE	MARB	TEND
36	95	93	91	85	88	28	70	99	68

\*Heifer bull  
SCROTAL MEASUREMENT  
**35.5 cm**

# 215 LAR Emblazon 215-771

Birth Date: 5/3/2022

D H D Traveler 6807  
O C C Emblazon 854E  
Dixie Erica of C H 1019  
DAM: Heisman daughter

PRODUCTION				
BW	ADJ WW	WWRATIO	YWRATIO	ADJ YW
78	592	90	99	820

CED	BW	WW	YW	YH	MW	MH	Claw	Angle	DMI
16	20	93	85	73	92	95	32	84	75

HP	CEM	MILK	SC	DOC	CW	FAT	RE	MARB	TEND
43	95	45	70	97	90	12	44	57	27

\*Heifer bull  
SCROTAL MEASUREMENT  
**37 cm**

# 216 LAR Emblazon 216-775

Birth Date: 5/2/2022

D H D Traveler 6807  
O C C Emblazon 854E  
Dixie Erica of C H 1019  
DAM: Conneally Thunder daughter

PRODUCTION				
BW	ADJ WW	WWRATIO	YWRATIO	ADJ YW
83	724	111	109	928

CED	BW	WW	YW	YH	MW	MH	Claw	Angle	DMI
77	53	49	94	92	91	93	23	32	18

HP	CEM	MILK	SC	DOC	CW	FAT	RE	MARB	TEND
67	95	71	48	90	77	49	89	96	44

SCROTAL MEASUREMENT  
**38 cm**



**216**

# 217 LAR Emblazon 217-4106

Birth Date: 5/2/2022

D H D Traveler 6807  
O C C Emblazon 854E  
Dixie Erica of C H 1019  
DAM: In Sure daughter

PRODUCTION				
BW	ADJ WW	WWRATIO	YWRATIO	ADJ YW
76	699	107	112	958

CED	BW	WW	YW	YH	MW	MH	Claw	Angle	DMI
14	24	67	81	48	47	50	85	85	19

HP	CEM	MILK	SC	DOC	CW	FAT	RE	MARB	TEND
77	91	43	52	36	42	74	24	93	61

\*Heifer bull  
SCROTAL MEASUREMENT  
**38.5 cm**

# 218 LAR Emblazon 218-342

Birth Date: 4/28/2022

D H D Traveler 6807  
O C C Emblazon 854E  
Dixie Erica of C H 1019  
DAM: Final Answer daughter

PRODUCTION				
BW	ADJ WW	WWRATIO	YWRATIO	ADJ YW
80	603	92	102	856

CED	BW	WW	YW	YH	MW	MH	Claw	Angle	DMI
24	31	76	85	96	85	93	7	62	29

HP	CEM	MILK	SC	DOC	CW	FAT	RE	MARB	TEND
97	69	68	95	27	82	88	72	92	84

\*Heifer bull  
SCROTAL MEASUREMENT  
**37.5 cm**

# 219 LAR Emblazon 219-4101

Birth Date: 5/8/2022

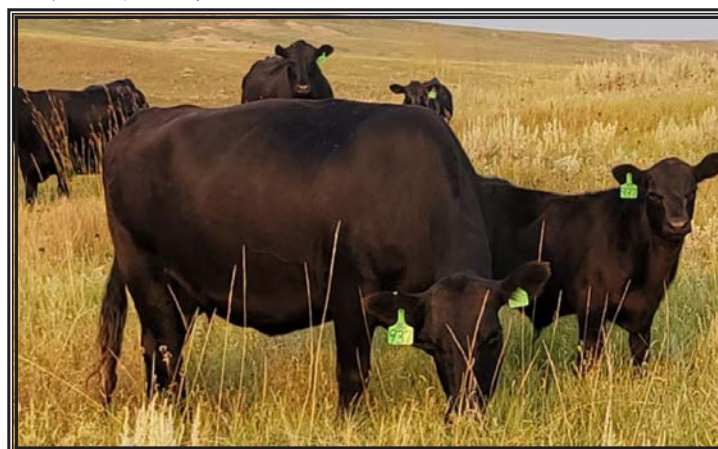
D H D Traveler 6807  
O C C Emblazon 854E  
Dixie Erica of C H 1019  
DAM: In Sure daughter

PRODUCTION				
BW	ADJ WW	WWRATIO	YWRATIO	ADJ YW
76	597	91	97	796

CED	BW	WW	YW	YH	MW	MH	Claw	Angle	DMI
4	10	84	87	75	92	95	44	56	25

HP	CEM	MILK	SC	DOC	CW	FAT	RE	MARB	TEND
44	96	51	59	16	78	72	60	93	87

\*Heifer bull  
SCROTAL MEASUREMENT  
**35.5 cm**



2 Corinthians 5:21 - "God made him who knew no sin to be sin for us, so that in Him we might become the righteousness of God."

# 220 LAR Emblazon 220-371

Birth Date: 5/7/2022

D H D Traveler 6807  
O C C Emblazon 854E  
Dixie Erica of C H 1019  
DAM: Dash daughter

PRODUCTION				
BW	ADJ WW	WWRATIO	YWRATIO	ADJ YW
85	641	98	102	848

CED	BW	WW	YW	YH	MW	MH	Claw	Angle	DMI
11	36	61	95	89	82	93	18	71	31

HP	CEM	MILK	SC	DOC	CW	FAT	RE	MARB	TEND
73	42	99	93	33	89	39	85	89	75

\*Heifer bull  
SCROTAL MEASUREMENT  
**37 cm**

# 221 LAR Emblazon 221-468

Birth Date: 5/3/2022

D H D Traveler 6807  
O C C Emblazon 854E  
Dixie Erica of C H 1019  
DAM: Dash daughter

PRODUCTION				
BW	ADJ WW	WWRATIO	YWRATIO	ADJ YW
84	606	93	101	836

CED	BW	WW	YW	YH	MW	MH	Claw	Angle	DMI
31	28	60	69	14	81	46	71	39	48

HP	CEM	MILK	SC	DOC	CW	FAT	RE	MARB	TEND
89	84	78	92	92	45	51	25	59	94

\*Heifer bull  
SCROTAL MEASUREMENT  
**37.5 cm**

# 222 LAR Emblazon 222-061

Birth Date: 5/6/2022

D H D Traveler 6807  
O C C Emblazon 854E  
Dixie Erica of C H 1019  
DAM: #061

PRODUCTION				
BW	ADJ WW	WWRATIO	YWRATIO	ADJ YW
85	557	85	89	708

CED	BW	WW	YW	YH	MW	MH	Claw	Angle	DMI
22	12	61	92	90	88	89	41	31	29

HP	CEM	MILK	SC	DOC	CW	FAT	RE	MARB	TEND
73	92	71	61	83	92	67	96	98	59

\*Heifer bull  
SCROTAL MEASUREMENT  
**37.5 cm**

# 223 LAR Emblazon 223-496

Birth Date: 5/3/2022

D H D Traveler 6807  
O C C Emblazon 854E  
Dixie Erica of C H 1019  
DAM: In Sure daughter

PRODUCTION				
BW	ADJ WW	WWRATIO	YWRATIO	ADJ YW
77	712	109	109	926

CED	BW	WW	YW	YH	MW	MH	Claw	Angle	DMI
14	36	73	87	47	90	91	54	100	10

HP	CEM	MILK	SC	DOC	CW	FAT	RE	MARB	TEND
16	100	18	65	64	55	50	24	88	100

\*Heifer bull  
SCROTAL MEASUREMENT  
**42.5 cm**

# 224 LAR Emblazon 224-478

Birth Date: 5/6/2022

D H D Traveler 6807  
O C C Emblazon 854E  
Dixie Erica of C H 1019  
DAM: Game Day daughter

PRODUCTION				
BW	ADJ WW	WWRATIO	YWRATIO	ADJ YW
83	620	95	107	906

CED	BW	WW	YW	YH	MW	MH	Claw	Angle	DMI
52	67	71	50	79	84	84	13	64	50

HP	CEM	MILK	SC	DOC	CW	FAT	RE	MARB	TEND
36	100	38	19	24	67	81	85	56	17

SCROTAL MEASUREMENT  
**39 cm**



224

# 225 LAR Emblazon 225-414

Birth Date: 5/1/2022

D H D Traveler 6807  
O C C Emblazon 854E  
Dixie Erica of C H 1019  
DAM: Final Answer daughter

PRODUCTION				
BW	ADJ WW	WWRATIO	YWRATIO	ADJ YW
78	708	108	114	982

CED	BW	WW	YW	YH	MW	MH	Claw	Angle	DMI
30	62	25	61	68	59	83	48	69	62

HP	CEM	MILK	SC	DOC	CW	FAT	RE	MARB	TEND
85	99	54	88	85	54	48	57	81	70

SCROTAL MEASUREMENT  
**37.5 cm**



225

# 226 LAR Emblazon 226-318

Birth Date: 5/7/2022

D H D Traveler 6807  
O C C Emblazon 854E  
Dixie Erica of C H 1019  
DAM: Final Answer daughter

PRODUCTION				
BW	ADJ WW	WWRATIO	YWRATIO	ADJ YW
83	679	110	97	802

CED	BW	WW	YW	YH	MW	MH	Claw	Angle	DMI
80	87	27	49	88	35	80	15	52	45

HP	CEM	MILK	SC	DOC	CW	FAT	RE	MARB	TEND
70	100	94	94	17	24	55	59	90	65

SCROTAL MEASUREMENT  
**37 cm**

# 227 LAR Emblazon 227-4111

Birth Date: 5/4/2022

D H D Traveler 6807  
O C C Emblazon 854E  
Dixie Erica of C H 1019  
DAM: In Sure daughter

PRODUCTION				
BW	ADJ WW	WWRATIO	YWRATIO	ADJ YW
74	654	100	105	886

CED	BW	WW	YW	YH	MW	MH	Claw	Angle	DMI
1	1	96	83	97	99	98	15	98	13

HP	CEM	MILK	SC	DOC	CW	FAT	RE	MARB	TEND
84	99	4	64	70	83	93	53	58	82

\*Heifer bull  
SCROTAL MEASUREMENT  
**39.5 cm**

# 228 LAR Emblazon 228-002

Birth Date: 5/11/2022

D H D Traveler 6807  
O C C Emblazon 854E  
Dixie Erica of C H 1019  
DAM: Hoover Dam daughter

PRODUCTION				
BW	ADJ WW	WWRATIO	YWRATIO	ADJ YW
83	625	101	96	788

CED	BW	WW	YW	YH	MW	MH	Claw	Angle	DMI
65	68	44	79	43	69	89	65	92	37

HP	CEM	MILK	SC	DOC	CW	FAT	RE	MARB	TEND
90	99	30	91	74	19	65	40	72	59

SCROTAL MEASUREMENT  
**38 cm**

# 229 LAR Emblazon 229-653

Birth Date: 5/9/2022

D H D Traveler 6807  
O C C Emblazon 854E  
Dixie Erica of C H 1019  
DAM: Dash daughter

PRODUCTION				
BW	ADJ WW	WWRATIO	YWRATIO	ADJ YW
86	663	101	103	860

CED	BW	WW	YW	YH	MW	MH	Claw	Angle	DMI
46	55	62	91	82	90	92	30	73	46

HP	CEM	MILK	SC	DOC	CW	FAT	RE	MARB	TEND
72	98	57	92	100	80	60	90	95	95

SCROTAL MEASUREMENT  
**36 cm**

# 230 LAR Emblazon 230-237

Birth Date: 5/1/2022

D H D Traveler 6807  
O C C Emblazon 854E  
Dixie Erica of C H 1019  
DAM: Final Answer daughter

PRODUCTION				
BW	ADJ WW	WWRATIO	YWRATIO	ADJ YW
74	680	104	101	844

CED	BW	WW	YW	YH	MW	MH	Claw	Angle	DMI
8	23	56	23	61	32	60	63	99	90

HP	CEM	MILK	SC	DOC	CW	FAT	RE	MARB	TEND
82	92	87	14	84	65	84	77	58	61

\*Heifer bull  
SCROTAL MEASUREMENT  
**38.5 cm**

# 231 LAR Emblazon 231-652

Birth Date: 5/3/2022

D H D Traveler 6807  
O C C Emblazon 854E  
Dixie Erica of C H 1019  
DAM: Dash daughter

PRODUCTION				
BW	ADJ WW	WWRATIO	YWRATIO	ADJ YW
87	672	103	107	902

CED	BW	WW	YW	YH	MW	MH	Claw	Angle	DMI
44	42	62	75	62	51	63	42	91	52

HP	CEM	MILK	SC	DOC	CW	FAT	RE	MARB	TEND
77	95	20	90	20	70	93	77	60	66

SCROTAL MEASUREMENT  
**37.5 cm**

# 232 LAR Emblazon 232-204

Birth Date: 5/12/2022

D H D Traveler 6807  
O C C Emblazon 854E  
Dixie Erica of C H 1019  
DAM: Frontman daughter

PRODUCTION				
BW	ADJ WW	WWRATIO	YWRATIO	ADJ YW
82	646	105	96	792

CED	BW	WW	YW	YH	MW	MH	Claw	Angle	DMI
45	67	63	62	69	84	86	63	93	77

HP	CEM	MILK	SC	DOC	CW	FAT	RE	MARB	TEND
86	99	55	91	95	78	78	79	93	73

SCROTAL MEASUREMENT  
**36 cm**



Acts 4:12 - "Salvation is found in no one else, for there is no other name under heaven given to mankind by which we must be saved."

# 233 LAR Emblazon 233-555

Birth Date: 5/2/2022

D H D Traveler 6807  
O C C Emblazon 854E  
Dixie Erica of C H 1019  
DAM: Conneally Thunder daughter

PRODUCTION				
BW	ADJ WW	WWRATIO	YWRATIO	ADJ YW
83	664	101	102	854

CED	BW	WW	YW	YH	MW	MH	Claw	Angle	DMI
28	35	81	65	83	92	93	35	31	61

HP	CEM	MILK	SC	DOC	CW	FAT	RE	MARB	TEND
61	64	76	77	46	82	44	65	88	68

\*Heifer bull  
SCROTAL MEASUREMENT  
**35 cm**



233

# 234 LAR Emblazon 234-Y698

Birth Date: 5/5/2022

D H D Traveler 6807  
O C C Emblazon 854E  
Dixie Erica of C H 1019  
DAM: Final Answer daughter

PRODUCTION				
BW	ADJ WW	WWRATIO	YWRATIO	ADJ YW
83	588	90	98	804

CED	BW	WW	YW	YH	MW	MH	Claw	Angle	DMI
74	67	47	86	84	72	90	73	96	52

HP	CEM	MILK	SC	DOC	CW	FAT	RE	MARB	TEND
44	100	62	40	46	82	60	37	83	89

SCROTAL MEASUREMENT  
**38 cm**

# 235 LAR Emblazon 235-Y697

Birth Date: 4/30/2022

D H D Traveler 6807  
O C C Emblazon 854E  
Dixie Erica of C H 1019  
DAM: Final Answer daughter

PRODUCTION				
BW	ADJ WW	WWRATIO	YWRATIO	ADJ YW
77	731	112	112	962

CED	BW	WW	YW	YH	MW	MH	Claw	Angle	DMI
8	21	86	93	95	99	100	86	100	28

HP	CEM	MILK	SC	DOC	CW	FAT	RE	MARB	TEND
37	55	43	61	49	97	48	89	56	68

\*Heifer bull  
SCROTAL MEASUREMENT  
**34 cm**

### 236 LAR Emblazon 236-Y307 Birth Date: 5/6/2022

D H D Traveler 6807  
O C C Emblazon 854E  
Dixie Erica of C H 1019

DAM: Final Answer daughter

PRODUCTION				
BW	ADJ WW	WWRATIO	YWRATIO	ADJ YW
80	702	107	96	784

CED	BW	WW	YW	YH	MW	MH	Claw	Angle	DMI
56	65	26	39	55	64	88	5	74	78

HP	CEM	MILK	SC	DOC	CW	FAT	RE	MARB	TEND
83	58	69	99	89	31	73	41	85	46

SCROTAL MEASUREMENT  
**35 cm**

### 237 LAR Emblazon 237-Y410 Birth Date: 5/6/2022

D H D Traveler 6807  
O C C Emblazon 854E  
Dixie Erica of C H 1019

DAM: Final Answer daughter

PRODUCTION				
BW	ADJ WW	WWRATIO	YWRATIO	ADJ YW
90	752	115	105	886

CED	BW	WW	YW	YH	MW	MH	Claw	Angle	DMI
56	73	28	65	34	30	48	14	18	44

HP	CEM	MILK	SC	DOC	CW	FAT	RE	MARB	TEND
81	90	64	67	76	31	62	71	87	84

SCROTAL MEASUREMENT  
**38 cm**

### 238 LAR Emblazon 238-Y502 Birth Date: 4/28/2022

D H D Traveler 6807  
O C C Emblazon 854E  
Dixie Erica of C H 1019

DAM: Final Answer daughter

PRODUCTION				
BW	ADJ WW	WWRATIO	YWRATIO	ADJ YW
79	664	101	107	908

CED	BW	WW	YW	YH	MW	MH	Claw	Angle	DMI
84	76	86	61	82	71	75	56	40	19

HP	CEM	MILK	SC	DOC	CW	FAT	RE	MARB	TEND
96	98	46	10	6	77	46	56	23	20

SCROTAL MEASUREMENT  
**42 cm**



**238**

## Beaver Creek Sons

### 239 LAR Beaver Creek 239-801 Birth Date: 5/2/2022

M C C Mule Creek 805  
WT Beaver Creek 118  
MH Frances 8180

DAM: Upward daughter

PRODUCTION				
BW	ADJ WW	WWRATIO	YWRATIO	ADJ YW
74	693	106	101	840

CED	BW	WW	YW	YH	MW	MH	Claw	Angle	DMI
36	27	83	88	77	95	89	2	10	35

HP	CEM	MILK	SC	DOC	CW	FAT	RE	MARB	TEND
43	6	63	40	71	69	63	72	87	67

\*Heifer bull  
SCROTAL MEASUREMENT  
**39 cm**



**239**

### 240 LAR Beaver Creek 240-726 Birth Date: 4/26/2022

M C C Mule Creek 805  
WT Beaver Creek 118  
MH Frances 8180

DAM: Upward daughter

PRODUCTION				
BW	ADJ WW	WWRATIO	YWRATIO	ADJ YW
74	684	104	105	878

CED	BW	WW	YW	YH	MW	MH	Claw	Angle	DMI
5	5	59	67	53	70	76	3	58	76

HP	CEM	MILK	SC	DOC	CW	FAT	RE	MARB	TEND
43	21	45	58	49	47	65	73	63	81

\*Heifer bull  
SCROTAL MEASUREMENT  
**35.5 cm**



### 241 LAR Beaver Creek 241-722 Birth Date: 4/29/2022

M C C Mule Creek 805  
WT Beaver Creek 118  
MH Frances 8180

DAM: Upward daughter

PRODUCTION				
BW	ADJ WW	WWRATIO	YWRATIO	ADJ YW
85	699	107	110	940

CED	BW	WW	YW	YH	MW	MH	Claw	Angle	DMI
19	42	47	61	77	53	81	28	80	57

HP	CEM	MILK	SC	DOC	CW	FAT	RE	MARB	TEND
94	27	76	67	82	48	34	68	97	82

\*Heifer bull  
SCROTAL MEASUREMENT  
**39 cm**



**241**

### 242 LAR Beaver Creek 242-815 Birth Date: 5/3/2022

M C C Mule Creek 805  
WT Beaver Creek 118  
MH Frances 8180

DAM: Upward daughter

PRODUCTION				
BW	ADJ WW	WWRATIO	YWRATIO	ADJ YW
82	666	102	104	870

CED	BW	WW	YW	YH	MW	MH	Claw	Angle	DMI
24	38	68	51	77	97	97	41	22	50

HP	CEM	MILK	SC	DOC	CW	FAT	RE	MARB	TEND
36	18	54	18	73	55	61	60	86	79

\*Heifer bull  
SCROTAL MEASUREMENT  
**39 cm**



**242**

### 244 LAR Beaver Creek 244-733 Birth Date: 5/2/2022

M C C Mule Creek 805  
WT Beaver Creek 118  
MH Frances 8180

DAM: Upward daughter

PRODUCTION				
BW	ADJ WW	WWRATIO	YWRATIO	ADJ YW
81	668	102	103	858

CED	BW	WW	YW	YH	MW	MH	Claw	Angle	DMI
61	59	49	72	47	83	66	6	43	78

HP	CEM	MILK	SC	DOC	CW	FAT	RE	MARB	TEND
38	26	91	12	85	44	67	31	86	97

SCROTAL MEASUREMENT  
**39 cm**



**244**





# NewCastle Sons

## 247 LAR NewCastle 247-880 Birth Date: 5/2/2022

WT Worth It 81  
WT NewCastle Z241  
MH Dixie Erica 622

DAM: In Sure daughter

PRODUCTION				
BW	ADJ WW	WWRATIO	YWRATIO	ADJ YW
82	593	91	94	766

CED	BW	WW	YW	YH	MW	MH	Claw	Angle	DMI
77	87	62	91	54	86	72	20	44	35

HP	CEM	MILK	SC	DOC	CW	FAT	RE	MARB	TEND
86	92	68	37	74	75	89	86	86	64

SCROTAL MEASUREMENT  
**38 cm**

## 248 LAR NewCastle 248-Y8570 Birth Date: 5/11/2022

WT Worth It 81  
WT NewCastle Z241  
MH Dixie Erica 622

DAM: Consensus daughter

PRODUCTION				
BW	ADJ WW	WWRATIO	YWRATIO	ADJ YW
88	714	109	108	912

CED	BW	WW	YW	YH	MW	MH	Claw	Angle	DMI
37	35	66	67	45	74	75	37	94	39

HP	CEM	MILK	SC	DOC	CW	FAT	RE	MARB	TEND
61	19	51	73	55	77	97	97	84	40

SCROTAL MEASUREMENT  
**38 cm**



## 249 LAR NewCastle 249-895 Birth Date: 5/6/2022

WT Worth It 81  
WT NewCastle Z241  
MH Dixie Erica 622

DAM: Beaver Creek daughter

PRODUCTION				
BW	ADJ WW	WWRATIO	YWRATIO	ADJ YW
78	616	94	92	740

CED	BW	WW	YW	YH	MW	MH	Claw	Angle	DMI
37	29	86	92	61	97	97	27	94	14

HP	CEM	MILK	SC	DOC	CW	FAT	RE	MARB	TEND
55	94	78	94	97	89	52	98	98	40

\*Heifer bull  
SCROTAL MEASUREMENT  
**35.5 cm**

## 251 LAR NewCastle 251-872 Birth Date: 5/11/2022

WT Worth It 81  
WT NewCastle Z241  
MH Dixie Erica 622

DAM: Comrad daughter

PRODUCTION				
BW	ADJ WW	WWRATIO	YWRATIO	ADJ YW
86	649	99	106	896

CED	BW	WW	YW	YH	MW	MH	Claw	Angle	DMI
66	79	29	28	31	31	43	14	7	68

HP	CEM	MILK	SC	DOC	CW	FAT	RE	MARB	TEND
95	88	28	46	45	30	44	83	96	20

SCROTAL MEASUREMENT  
**39.5 cm**

## 252 LAR NewCastle 252-8101 Birth Date: 5/4/2022

WT Worth It 81  
WT NewCastle Z241  
MH Dixie Erica 622

DAM: Beaver Creek daughter

PRODUCTION				
BW	ADJ WW	WWRATIO	YWRATIO	ADJ YW
80	628	96	101	840

CED	BW	WW	YW	YH	MW	MH	Claw	Angle	DMI
4	14	92	94	93	73	82	6	93	27

HP	CEM	MILK	SC	DOC	CW	FAT	RE	MARB	TEND
40	7	65	90	79	74	98	99	88	73

\*Heifer bull  
SCROTAL MEASUREMENT  
**37.5 cm**

## 253 LAR NewCastle 253-851 Birth Date: 5/2/2022

WT Worth It 81  
WT NewCastle Z241  
MH Dixie Erica 622

DAM: Comrad daughter

PRODUCTION				
BW	ADJ WW	WWRATIO	YWRATIO	ADJ YW
82	567	87	91	730

CED	BW	WW	YW	YH	MW	MH	Claw	Angle	DMI
41	21	97	89	89	92	87	70	96	8

HP	CEM	MILK	SC	DOC	CW	FAT	RE	MARB	TEND
92	80	96	76	78	100	91	83	99	89

\*Heifer bull  
SCROTAL MEASUREMENT  
**35.5 cm**



We are blessed with the best neighbors,  
Dave and Judy Gano

# Registered Bulls

This is a good offering of registered bulls this year. Each bull is heavily influenced by Dunlouse, OCC, and N Bar genetics. These bulls are truly adapted to our tough northern environment and continue to impress me on how they perform on grass. Will transfer registration papers upon buyer's request. Retaining half semen interest on all registered bulls.

## 254 LAR Cortachy Boy 254-Y010 Birth Date: 4/29/2022

PPA Cortachy Boy 624  
PPA Cowboy 930  
PPA 620 Pride 210  
  
PPA Cortachy Boy 819  
LAR 833 Lady 010  
PPA 318 Pride 833

PRODUCTION				
BW	ADJ WW	WWRATIO	YWRATIO	ADJ YW
74	498	76	77	576

CED	BW	WW	YW	YH	MW	MH	Claw	Angle	DMI
1	6	97	94	96	95	99	45	80	13

HP	CEM	MILK	SC	DOC	CW	FAT	RE	MARB	TEND
37	33	66	77	91	98	75	78	94	44

\*Heifer bull  
SCROTAL MEASUREMENT  
**34 cm**

## 255 LAR Cortachy Boy 255-Y610 Birth Date: 5/8/2022

PPA Cortachy Boy 310  
PPA Cortachy Boy 639  
PPA 705 Lady 124  
  
PPA Cortachy Boy 310  
PPA 329 Erica 610  
PPA 120 Erica 329

PRODUCTION				
BW	ADJ WW	WWRATIO	YWRATIO	ADJ YW
77	580	89	96	782

CED	BW	WW	YW	YH	MW	MH	Claw	Angle	DMI
69	62	49	75	89	25	74	9	61	22

HP	CEM	MILK	SC	DOC	CW	FAT	RE	MARB	TEND
41	63	92	94	92	56	68	67	55	27

SCROTAL MEASUREMENT  
**36.5 cm**

## 256 LAR Cortachy Boy 256-Y826 Birth Date: 4/24/2022

CED	BW	WW	YW	YH	MW	MH	Claw	Angle	DMI
76	70	77	52	72	44	90	12	77	60

HP	CEM	MILK	SC	DOC	CW	FAT	RE	MARB	TEND
37	81	30	63	83	38	86	39	79	5

PPA Cortachy Boy 310  
PPA Scotts 72  
PPA 807 Princess 321  
  
PPA Prime Time 524  
PPA 210 Pride 826  
PPA 620 Pride 210

This guy is out of a great cow family. His dam 826 is what a picture perfect Angus cow should look like. We are very impressed with his dam and excited to see this bull's future.



**258**

**LAR Cortachy Boy 258-Y26**  
**Birth Date: 4/26/2022**

**\*Heifer bull**

Wow, what a bull! 258's dam is coming 12 years old and still in production. His sire Scotts 72 is one of the most easy fleshing animals I've owned, an amazing bull! I would like to work with the buyer of this bull and get him collected prior to the 2024 breeding season so we can AI to this bull.

PPA Cortachy Boy 310  
PPA Scotts 72  
PPA 807 Princess 321  
  
OCC Missing Link 830M  
PPA 815 Effileen Erica 26  
PPA 124 Effileen Erica 815

PRODUCTION				
BW	ADJ WW	WWRATIO	YWRATIO	ADJ YW
82	649	105	103	864

CED	BW	WW	YW	YH	MW	MH	Claw	Angle	DMI
40	25	36	31	34	19	47	20	10	88
HP	CEM	MILK	SC	DOC	CW	FAT	RE	MARB	TEND
96	78	20	21	81	16	79	24	88	63

SCROTAL MEASUREMENT  
**40.5 cm**

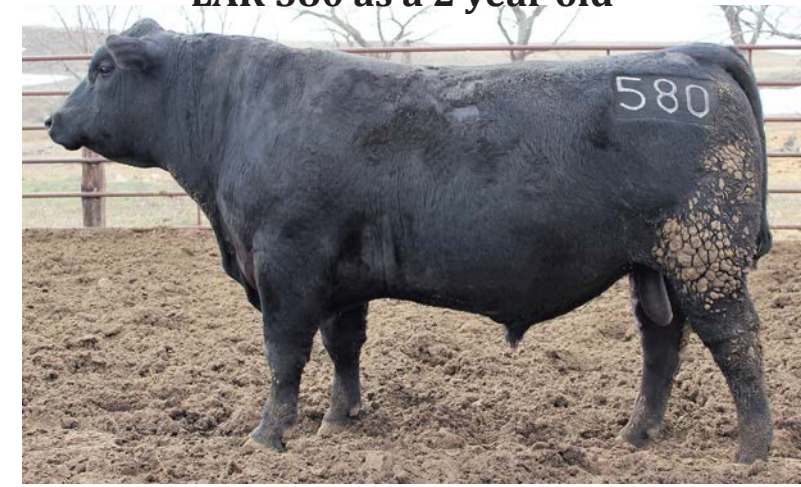


**LAR 580 Sons**

**Reference Sire: LAR 580-129**

**Birth Date: 4/13/2015**

**LAR 580 as a 2 year old**



**LAR 580's full sister's daughter.**  
**Check out the perfect udder on her!**



Grandpa Dean LaDue purchased 580 at our 2017 sale. After Grandpa passed away in the fall of 2017, we continued to use 580 on Grandpa's commercial cows. The older 580 got, the more we realized how great of a bull he truly was. We used him as a clean up bull on our purebred cows for a few years and in the summer of 2021, we decided to use him natural service on his own group of cows. 580 is a very dominate bull and has covered many cows without losing condition. 580's dam is still in production at age 13 as well as his maternal sister at age 12, as well as his granddam at age 17! He is truly a maternal power house producing daughters with exceptional longevity and udder structure that is second to none.

**261**

**LAR Cortachy Boy 261-Y89**  
**Birth Date: 5/19/2022**

PRODUCTION				
BW	ADJ WW	WWRATIO	YWRATIO	ADJ YW
75	574	93	89	706

PPA Cortachy Boy 310  
PPA Scotts 72  
PPA 807 Princess 321  
  
PPA Cortachy Boy 310  
PPA 910 Effileen Erica 89  
PPA 401 Effileen Erica 910

CED	BW	WW	YW	YH	MW	MH	Claw	Angle	DMI
68	40	88	72	96	76	89	25	91	42
HP	CEM	MILK	SC	DOC	CW	FAT	RE	MARB	TEND
12	86	65	95	86	97	92	78	83	13

SCROTAL MEASUREMENT  
**37.5 cm**

**262**

**LAR Cortachy Boy 262-Y615**  
**Birth Date: 5/14/2022**

PRODUCTION				
BW	ADJ WW	WWRATIO	YWRATIO	ADJ YW
77	558	90	94	764

PPA Cortachy Boy 310  
PPA Cortachy Boy 639  
PPA 705 Lady 124  
  
PPA Cortachy Boy 310  
PPA 334 Princess 615  
PPA 802 Princess 334

CED	BW	WW	YW	YH	MW	MH	Claw	Angle	DMI
29	32	75	91	97	60	83	17	90	37
HP	CEM	MILK	SC	DOC	CW	FAT	RE	MARB	TEND
28	40	85	76	48	87	85	91	51	21

**\*Heifer bull**  
SCROTAL MEASUREMENT  
**35.5 cm**

**274**

**LAR 274-Y0123**  
**Birth Date: 5/1/2022**

PRODUCTION				
BW	ADJ WW	WWRATIO	YWRATIO	ADJ YW
82	749	114	106	898

Sire: LAR 580  
DAM: Y0123

CED	BW	WW	YW	YH	MW	MH	Claw	Angle	DMI
14	13	59	80	96	41	92	90	77	56
HP	CEM	MILK	SC	DOC	CW	FAT	RE	MARB	TEND
1	39	77	91	40	83	88	75	77	15

**\*Heifer bull**  
SCROTAL MEASUREMENT  
**36 cm**

**278**

**LAR 278-Y9141**  
**Birth Date: 5/6/2022**

PRODUCTION				
BW	ADJ WW	WWRATIO	YWRATIO	ADJ YW
84	633	97	97	800

Sire: LAR 580  
DAM: Y9141

CED	BW	WW	YW	YH	MW	MH	Claw	Angle	DMI
49	47	63	88	44	74	59	72	47	11
HP	CEM	MILK	SC	DOC	CW	FAT	RE	MARB	TEND
58	60	87	50	51	74	54	54	48	45

SCROTAL MEASUREMENT  
**39 cm**

**275**

**LAR 275-Y788**  
**Birth Date: 5/14/2022**

PRODUCTION				
BW	ADJ WW	WWRATIO	YWRATIO	ADJ YW
91	663	101	104	872

Sire: LAR 580  
DAM: TC Thunder daughter

CED	BW	WW	YW	YH	MW	MH	Claw	Angle	DMI
86	70	37	72	83	47	65	26	33	74
HP	CEM	MILK	SC	DOC	CW	FAT	RE	MARB	TEND
100	40	73	85	4	62	40	27	96	52

SCROTAL MEASUREMENT  
**34 cm**

**279**

**LAR 279-Y9139**  
**Birth Date: 5/14/2022**

PRODUCTION				
BW	ADJ WW	WWRATIO	YWRATIO	ADJ YW
82	616	94	89	712

Sire: LAR 580  
DAM: Y9139

CED	BW	WW	YW	YH	MW	MH	Claw	Angle	DMI
56	60	5	63	5	23	25	31	81	60
HP	CEM	MILK	SC	DOC	CW	FAT	RE	MARB	TEND
13	40	43	10	8	29	21	43	74	77

SCROTAL MEASUREMENT  
**37 cm**

Ephesians 2: 8-9 "For it is by grace you have been saved through faith and this is not from yourselves, it is the gift of God - not by works, so that no one can boast."

**280** LAR 280-963  
Birth Date: 4/29/2022

PRODUCTION				
BW	ADJ WW	WWRATIO	YWRATIO	ADJ YW
82	619	95	99	824

Sire: LAR 580  
DAM: NewCastle daughter

CED	BW	WW	YW	YH	MW	MH	Claw	Angle	DMI
16	19	82	93	75	76	89	97	98	12

**\*Heifer bull**  
SCROTAL MEASUREMENT  
**36.5 cm**

HP	CEM	MILK	SC	DOC	CW	FAT	RE	MARB	TEND
76	96	100	76	43	65	91	75	95	13

**281** LAR 281-0130  
Birth Date: 4/26/2022

PRODUCTION				
BW	ADJ WW	WWRATIO	YWRATIO	ADJ YW
79	681	104	101	846

Sire: LAR 580  
DAM: 0130

CED	BW	WW	YW	YH	MW	MH	Claw	Angle	DMI
10	9	46	74	21	27	27	23	93	92

**\*Heifer bull**  
SCROTAL MEASUREMENT  
**38.5 cm**

HP	CEM	MILK	SC	DOC	CW	FAT	RE	MARB	TEND
15	35	86	43	25	50	79	60	48	3

**284** LAR 284-948  
Birth Date: 5/6/2022

PRODUCTION				
BW	ADJ WW	WWRATIO	YWRATIO	ADJ YW
80	707	108	106	900

Sire: LAR 580  
DAM: Payweight daughter

CED	BW	WW	YW	YH	MW	MH	Claw	Angle	DMI
53	62	70	91	70	69	91	60	38	14

SCROTAL MEASUREMENT  
**36.5 cm**

HP	CEM	MILK	SC	DOC	CW	FAT	RE	MARB	TEND
27	91	22	71	87	60	95	75	75	21

**285** LAR 285-708  
Birth Date: 5/19/2022

PRODUCTION				
BW	ADJ WW	WWRATIO	YWRATIO	ADJ YW
83	682	104	97	794

Sire: LAR 580  
DAM: Upward daughter

CED	BW	WW	YW	YH	MW	MH	Claw	Angle	DMI
20	30	34	59	78	77	86	28	40	82

**\*Heifer bull**  
SCROTAL MEASUREMENT  
**41.5 cm**

HP	CEM	MILK	SC	DOC	CW	FAT	RE	MARB	TEND
56	82	23	19	79	41	64	4	96	12

**286** LAR 286-969  
Birth Date: 5/22/2022

PRODUCTION				
BW	ADJ WW	WWRATIO	YWRATIO	ADJ YW
90	748	114	97	794

Sire: LAR 580  
DAM: NewCastle daughter

CED	BW	WW	YW	YH	MW	MH	Claw	Angle	DMI
91	82	63	77	37	49	52	64	87	21

SCROTAL MEASUREMENT  
**39 cm**

HP	CEM	MILK	SC	DOC	CW	FAT	RE	MARB	TEND
21	99	73	41	22	80	25	74	97	85

**288** LAR 288-736  
Birth Date: 5/15/2022

PRODUCTION				
BW	ADJ WW	WWRATIO	YWRATIO	ADJ YW
86	710	108	106	892

Sire: LAR 580  
DAM: Upward daughter

CED	BW	WW	YW	YH	MW	MH	Claw	Angle	DMI
58	49	10	37	40	26	32	52	94	96

SCROTAL MEASUREMENT  
**39.5 cm**

HP	CEM	MILK	SC	DOC	CW	FAT	RE	MARB	TEND
71	91	54	52	84	17	69	15	89	68

**289** LAR 289-913  
Birth Date: 5/3/2022

PRODUCTION				
BW	ADJ WW	WWRATIO	YWRATIO	ADJ YW
85	660	101	108	914

Sire: LAR 580  
DAM: Resource daughter

CED	BW	WW	YW	YH	MW	MH	Claw	Angle	DMI
40	36	41	54	54	34	72	22	5	28

SCROTAL MEASUREMENT  
**38 cm**

HP	CEM	MILK	SC	DOC	CW	FAT	RE	MARB	TEND
18	99	26	16	37	36	40	40	78	65



**292** LAR 292-932  
Birth Date: 5/16/2022

PRODUCTION				
BW	ADJ WW	WWRATIO	YWRATIO	ADJ YW
75	692	112	100	826

Sire: LAR 580  
DAM: Beaver Creek daughter

CED	BW	WW	YW	YH	MW	MH	Claw	Angle	DMI
71	70	41	72	30	69	62	46	45	40

SCROTAL MEASUREMENT  
**38.5 cm**

HP	CEM	MILK	SC	DOC	CW	FAT	RE	MARB	TEND
21	75	11	13	34	44	87	85	61	68

**293** LAR 293-671  
Birth Date: 5/7/2022

PRODUCTION				
BW	ADJ WW	WWRATIO	YWRATIO	ADJ YW
80	696	106	103	858

Sire: LAR 580  
DAM: Confidence daughter

CED	BW	WW	YW	YH	MW	MH	Claw	Angle	DMI
22	36	23	78	98	53	85	4	4	55

**\*Heifer bull**  
SCROTAL MEASUREMENT  
**40.5 cm**

HP	CEM	MILK	SC	DOC	CW	FAT	RE	MARB	TEND
27	75	73	73	47	53	49	26	100	34



**297** LAR 297-0104  
Birth Date: 5/3/2022

PRODUCTION				
BW	ADJ WW	WWRATIO	YWRATIO	ADJ YW
85	666	102	106	900

Sire: LAR 580  
DAM: Payweight daughter

CED	BW	WW	YW	YH	MW	MH	Claw	Angle	DMI
43	69	8	12	31	14	35	84	68	74

SCROTAL MEASUREMENT  
**40 cm**

HP	CEM	MILK	SC	DOC	CW	FAT	RE	MARB	TEND
31	90	37	7	33	3	15	22	85	19

**299** LAR 299-648  
Birth Date: 4/30/2022

PRODUCTION				
BW	ADJ WW	WWRATIO	YWRATIO	ADJ YW
81	653	100	107	910

Sire: LAR 580  
DAM: Dash daughter

CED	BW	WW	YW	YH	MW	MH	Claw	Angle	DMI
40	49	78	94	91	92	95	42	84	31

SCROTAL MEASUREMENT  
**41.5 cm**

HP	CEM	MILK	SC	DOC	CW	FAT	RE	MARB	TEND
89	35	99	11	60	89	98	70	24	62



**294** LAR 294-940  
Birth Date: 5/3/2022

PRODUCTION				
BW	ADJ WW	WWRATIO	YWRATIO	ADJ YW
72	650	99	100	830

Sire: LAR 580  
DAM: Beaver Creek daughter

CED	BW	WW	YW	YH	MW	MH	Claw	Angle	DMI
39	29	53	77	56	74	79	33	16	29

**\*Heifer bull**  
SCROTAL MEASUREMENT  
**35 cm**

HP	CEM	MILK	SC	DOC	CW	FAT	RE	MARB	TEND
24	85	68	58	26	63	65	38	86	56

**2100** LAR 2100-101  
Birth Date: 5/12/2022

PRODUCTION				
BW	ADJ WW	WWRATIO	YWRATIO	ADJ YW
78	696	106	100	832

Sire: LAR 580  
DAM: Final Answer daughter

CED	BW	WW	YW	YH	MW	MH	Claw	Angle	DMI
8	22	42	69	63	52	69	2	6	31

**\*Heifer bull**  
SCROTAL MEASUREMENT  
**39 cm**

HP	CEM	MILK	SC	DOC	CW	FAT	RE	MARB	TEND
38	85	43	66	86	40	34	25	100	31

**2101** LAR 2101-949  
Birth Date: 5/20/2022

Sire: LAR 580  
DAM: Payweight daughter

PRODUCTION				
BW	ADJ WW	WWRATIO	YWRATIO	ADJ YW
75	667	102	93	756

CED	BW	WW	YW	YH	MW	MH	Claw	Angle	DMI
43	32	39	41	55	66	89	54	54	67

\*Heifer bull

SCROTAL MEASUREMENT  
**38 cm**

HP	CEM	MILK	SC	DOC	CW	FAT	RE	MARB	TEND
1	89	54	98	22	65	97	92	49	37

**2102** LAR 2102-941  
Birth Date: 5/4/2022

Sire: LAR 580  
DAM: Beaver Creek daughter

PRODUCTION				
BW	ADJ WW	WWRATIO	YWRATIO	ADJ YW
74	657	100	106	898

CED	BW	WW	YW	YH	MW	MH	Claw	Angle	DMI
89	83	36	57	33	73	53	45	85	53

SCROTAL MEASUREMENT  
**41.5 cm**

HP	CEM	MILK	SC	DOC	CW	FAT	RE	MARB	TEND
20	100	62	6	67	51	51	85	99	23

**2103** LAR 2103-045  
Birth Date: 5/10/2022

Sire: LAR 580  
DAM: BC Certified daughter

PRODUCTION				
BW	ADJ WW	WWRATIO	YWRATIO	ADJ YW
78	586	89	88	698

CED	BW	WW	YW	YH	MW	MH	Claw	Angle	DMI
38	13	62	73	85	57	90	61	29	29

\*Heifer bull

SCROTAL MEASUREMENT  
**36.5 cm**

HP	CEM	MILK	SC	DOC	CW	FAT	RE	MARB	TEND
68	87	88	80	72	73	50	85	60	63

**2104** LAR 2104-8123  
Birth Date: 5/2/2022

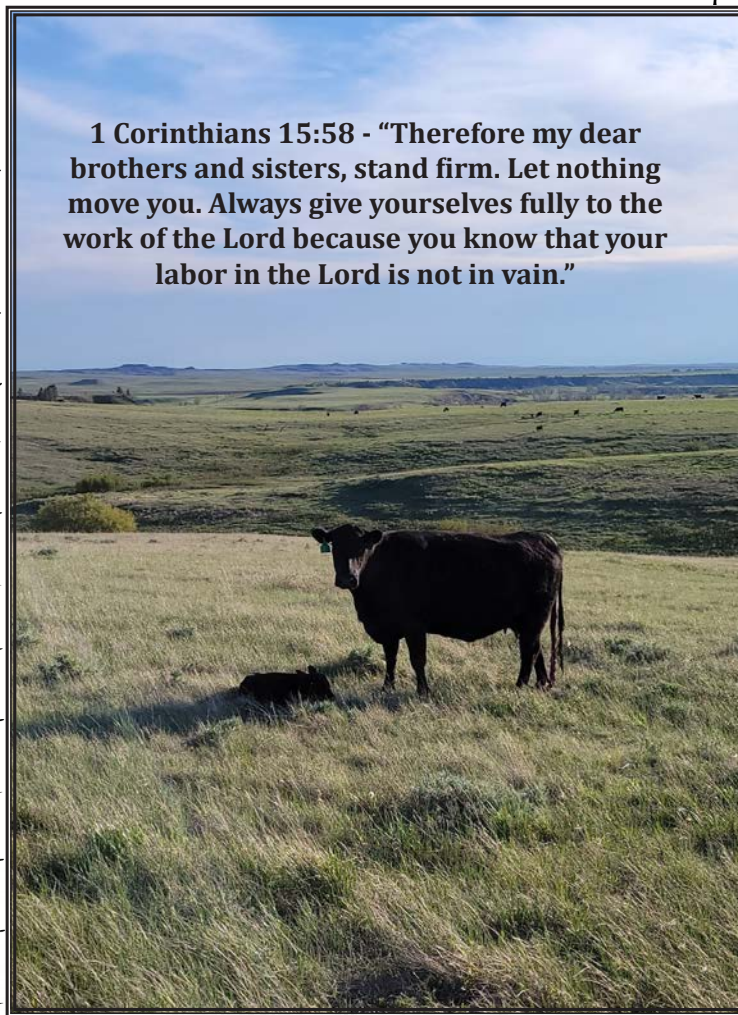
Sire: LAR 580  
DAM: #8123

PRODUCTION				
BW	ADJ WW	WWRATIO	YWRATIO	ADJ YW
78	634	97	98	804

CED	BW	WW	YW	YH	MW	MH	Claw	Angle	DMI
59	45	19	75	25	43	51	72	87	12

SCROTAL MEASUREMENT  
**39 cm**

HP	CEM	MILK	SC	DOC	CW	FAT	RE	MARB	TEND
21	86	49	18	23	32	14	55	93	78



1 Corinthians 15:58 - "Therefore my dear brothers and sisters, stand firm. Let nothing move you. Always give yourselves fully to the work of the Lord because you know that your labor in the Lord is not in vain."

# Zoetis HD50K Test Results

Percent ranks (1-100) are provided by the American Angus Association to assist in establishing direction of interest for each trait. Ranks are based on 1,384,602 animals as of 06/01/2023.

Tag #	Calving Ease		Growth & Mature Cow Size					Foot Score		Efficiency	Maternal & Temperament					Carcass			Quality	
	CED	BW	WW	YW	YH	MW	MH	Claw	Angle	DMI	HP	CEM	MILK	SC	DOC	CW	FAT	RE	MARB	TEND
201	87	72	12	25	23	37	46	1	2	65	19	100	69	83	58	19	11	9	91	5
202	48	18	22	61	50	62	52	2	33	96	67	88	24	53	70	32	85	31	92	43
203	84	65	9	46	19	5	13	58	45	78	24	77	66	2	89	8	53	2	100	26
204	42	45	29	73	71	26	54	12	47	30	39	74	95	92	70	57	5	2	100	39
205	90	73	13	74	21	26	38	6	8	56	77	45	97	28	30	41	21	34	99	79
206	49	36	72	63	70	62	74	16	22	36	69	95	37	24	46	64	7	20	99	66
207	84	78	24	47	33	52	65	3	6	75	49	99	73	79	65	67	81	76	82	88
208	94	94	36	32	19	59	29	4	5	43	33	81	79	44	36	61	31	16	100	56
209	30	29	77	75	63	88	57	20	5	49	82	74	87	71	95	63	4	18	95	21
210	38	45	34	62	82	61	85	13	61	40	97	90	75	80	73	71	59	11	100	45
212	28	38	91	85	98	81	97	79	95	32	89	97	81	84	49	82	87	89	91	92
214	12	21	70	86	93	61	92	37	82	23	36	95	93	91	85	88	28	70	99	68
215	16	20	93	85	73	92	95	32	84	75	43	95	45	70	97	90	12	44	57	27
216	77	53	49	94	92	91	93	23	32	18	67	95	71	48	90	77	49	89	96	44
217	14	24	67	81	48	47	50	85	85	19	77	91	43	52	36	42	74	24	93	61
218	24	31	76	85	96	85	93	7	62	29	97	69	68	95	27	82	88	72	92	84
219	4	10	84	87	75	92	95	44	56	25	44	96	51	59	16	78	72	60	93	87
220	11	36	61	95	89	82	93	18	71	31	73	42	99	93	33	89	39	85	89	75
221	31	28	60	69	14	81	46	71	39	48	89	84	78	92	92	45	51	25	59	94
222	22	12	61	92	90	88	89	41	31	29	73	92	71	61	83	92	67	96	98	59
223	14	36	73	87	47	90	91	54	100	10	16	100	18	65	64	55	50	24	88	100
224	52	67	71	50	79	84	84	13	64	50	36	100	38	19	24	67	81	85	56	17
225	30	62	25	61	68	59	83	48	69	62	85	99	54	88	85	54	48	57	81	70
226	80	87	27	49	88	35	80	15	52	45	70	100	94	94	17	24	55	59	90	65
227	1	1	96	83	97	99	98	15	98	13	84	99	4	64	70	83	93	53	58	82
228	65	68	44	79	43	69	89	65	92	37	90	99	30	91	74	19	65	40	72	59
229	46	55	62	91	82	90	92	30	73	46	72	98	57	92	100	80	60	90	95	95
230	8	23	56	23	61	32	60	63	99	90	82	92	87	14	84	65	84	77	58	61
231	44	42	62	75	62	51	63	42	91	52	77	95	20	90	20	70	93	77	60	66
232	45	67	63	62	69	84	86	63	93	77	86	99	55	91	95	78	78	79	93	73
233	28	35	81	65	83	92	93	35	31	61	61	64	76	77	46	82	44	65	88	68
234	74	67	47	86	84	72	90	73	96	52	44	100	62	40	46	82	60	37	83	89
235	8	21	86	93	95	99	100	86	100	28	37	55	43	61	49	97	48	89	56	68
236	56	65	26	39	55	64	88	5	74	78	83	58	69	99	89	31	73	41	85	46
237	56	73	28	65	34	30	48	14	18	44	81	90	64	67	76	31	62	71	87	84
238	84	76	86	61	82	71	75	56	40	19	96	98	46	10	6	77	46	56	23	20
239	36	27	83	88	77	95	89	2	10	35	43	6	63	40	71	69	63	72	87	67
240	5	5	59	67	53	70	76	3	58	76	43	21	45	58	49	47	65	73	63	81
241	19	42	47	61	77	53	81	28	80	57	94	27	76	67	82	48	34	68	97	82
242	24	38	68	51	77	97	97	41	22	50	36	18	54	18	73	55	61	60	86	79
244	61	59	49	72	47	83	66	6	43	78	38	26	91	12	85	44	67	31	86	97
247	77	87	62	91	54	86	72	20	44	35	86	92	68	37	74	75	89	86	86	64
248	37	35	66	67	45	74	75	37	94	39	61	19	51	73	55	77	97	97	84	40
249	37	29	86	92	61	97	97	27	94	14	55	94	78	94	97	89	52	98	98	40
251	66	79	29	28	31	31	43	14	7	68	95	88	28	46	45	30	44	83	96	20
252	4	14	92	94	93	73	82	6	93	27	40	7	65	90	79	74	98	99	88	73
253	41	21	97	89	89	92	87	70	96	8	92	80	96	76	78	100	91	83	99	89



Tag #	Calving Ease		Growth & Mature Cow Size					Foot Score		Efficiency	Maternal & Temperament					Carcass			Quality	
	CED	BW	WW	YW	YH	MW	MH	Claw	Angle	DMI	HP	CEM	MILK	SC	DOC	CW	FAT	RE	MARB	TEND
254	1	6	97	94	96	95	99	45	80	13	37	33	66	77	91	98	75	78	94	44
255	69	62	49	75	89	25	74	9	61	22	41	63	92	94	92	56	68	67	55	27
256	76	70	77	52	72	44	90	12	77	60	37	81	30	63	83	38	86	39	79	5
257	9	3	93	89	97	42	88	21	93	26	69	46	60	96	60	68	88	55	93	38
258	40	25	36	31	34	19	47	20	10	88	96	78	20	21	81	16	79	24	88	63
259	33	15	95	99	87	59	92	71	84	6	56	58	96	91	74	93	99	98	44	33
261	68	40	88	72	96	76	89	25	91	42	12	86	65	95	86	97	92	78	83	13
262	29	32	75	91	97	60	83	17	90	37	28	40	85	76	48	87	85	91	51	21
274	14	13	59	80	96	41	92	90	77	56	1	39	77	91	40	83	88	75	77	15
275	86	70	37	72	83	47	65	26	33	74	100	40	73	85	4	62	40	27	96	52
278	49	47	63	88	44	74	59	72	47	11	58	60	87	50	51	74	54	54	48	45
279	56	60	5	63	5	23	25	31	81	60	13	40	43	10	8	29	21	43	74	77
280	16	19	82	93	75	76	89	97	98	12	76	96	100	76	43	65	91	75	95	13
281	10	9	46	74	21	27	27	23	93	92	15	35	86	43	25	50	79	60	48	3
283	58	72	4	13	42	21	50	41	84	91	53	67	35	3	83	9	38	27	78	6
284	53	62	70	91	70	69	91	60	38	14	27	91	22	71	87	60	95	75	75	21
285	20	30	34	59	78	77	86	28	40	82	56	82	23	19	79	41	64	4	96	12
286	91	82	63	77	37	49	52	64	87	21	21	99	73	41	22	80	25	74	97	85
288	58	49	10	37	40	26	32	52	94	96	71	91	54	52	84	17	69	15	89	68
289	40	36	41	54	54	34	72	22	5	28	18	99	26	16	37	36	40	40	78	65
290	17	6	98	93	90	82	67	20	43	3	88	47	93	58	69	82	73	96	88	33
292	71	70	41	72	30	69	62	46	45	40	21	75	11	13	34	44	87	85	61	68
293	22	36	23	78	98	53	85	4	4	55	27	75	73	73	47	53	49	26	100	34
294	39	29	53	77	56	74	79	33	16	29	24	85	68	58	26	63	65	38	86	56
297	43	69	8	12	31	14	35	84	68	74	31	90	37	7	33	3	15	22	85	19
299	40	49	78	94	91	92	95	42	84	31	89	35	99	11	60	89	98	70	24	62
2100	8	22	42	69	63	52	69	2	6	31	38	85	43	66	86	40	34	25	100	31
2101	43	32	39	41	55	66	89	54	54	67	1	89	54	98	22	65	97	92	49	37
2102	89	83	36	57	33	73	53	45	85	53	20	100	62	6	67	51	51	85	99	23
2103	38	13	62	73	85	57	90	61	29	29	68	87	88	80	72	73	50	85	60	63
2104	59	45	19	75	25	43	51	72	87	12	21	86	49	18	23	32	14	55	93	78

Term	Description	Percentile Rank	Observation
Calving Ease Direct (CED)	Describes differences in genetic merit for the likelihood of unassisted births in first-calf heifers, expressed as a trait of the progeny.	1%	More unassisted calvings
Birth Weight (BW)	Quantifies genetic differences in birth weight, with lower and moderate values and ranks generally desired for ease of calving.	1%	Lighter
Weaning Weight (WW)	Measures difference in genetic merit for adjusted 205-day weaning weight	1%	Heavier
Yearling Weight (YW)	Indicates differences in breeding value for adjusted 365-day weight	1%	Heavier
Yearling Height (YH)	Describes genetic differences in adjusted 365-day hip height	1%	More hip height
Mature Weight (MW)	Quantifies differences in genetic merit for mature cow weight at a constant body condition	1%	Larger cow weight
Mature Height (MH)	Measures genetic variation in mature cow height	1%	More cow height
Foot Score Claw (FSclaw)	Indicates a sire will produce progeny with a more ideal claw set defined as toes being symmetrical, evenly, and appropriately spaced	1%	More ideal claw set
Foot Score Angle (FSAngle)	Indicates a sire will produce progeny with a more ideal foot angle defined as a 45 degree angle at the pastern joint with appropriate length and heel depth	1%	More ideal foot angle
Dry Matter Intake (DMI)	Quantifies genetic differences for feed intake while on feedlot finishing rations	1%	Eat less
Heifer Pregnancy (HP)	Predicts the probability of ability of heifers to become pregnant	1%	Increased pregnancy probability
Calving Ease Maternal (CEM)	Indicates differences in genetic merit for the likelihood of unassisted births in first-calf heifers, expressed as a trait of the heifer.	1%	More unassisted calvings
Milking Ability (MILK)	Evaluates differences in genetic merit for the maternal component of calf weaning weight, predominantly due to milking ability of dams (or daughters).	1%	More maternal milk
Scrotal Circumference (SC)	Describes genetic differences in age at puberty as indicated by adjusted yearling scrotal circumference.	1%	Larger size
Docility (DOC)	Quantifies genetic differences in the probability of acceptable (calm) versus unacceptable (wild) temperament.	1%	More docile
Carcass Weight (CW)	Measures differences in breeding value for pounds of carcass weight at a constant age.	1%	Heavier
Fat Thickness (FAT)	Communicates genetic differences in fat thickness measured adjacent to the ribeye between the 12th and 13th rib, at a constant age.	1%	Leaner
Ribeye (RE)	Describes genetic variation in carcass muscularity as measured by ribeye area between the 12th and 13th rib, at a constant age.	1%	Larger
Marbling Score (MARB)	Quantifies genetic differences in USDA marbling scores at a constant age	1%	Greater
Tenderness (TEND)	Evaluates differences in genetic merit for tenderness based on the amount of shear force required to slice through cooked steak samples.	1%	More tender



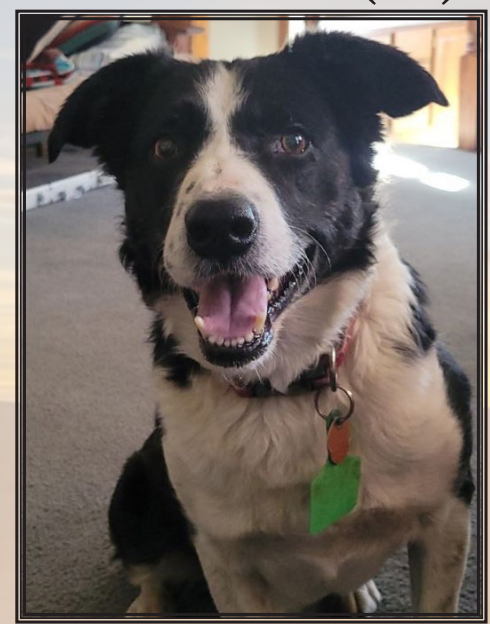
# Our GREAT customers and friends - Thank you!



# Parable of the Pooch(es)

God looked down on the rancher and saw he was lonely and needed a special helper. God said, "I need someone to keep the rancher company in the tractor when he is feeding his cattle and to watch the gate when it gets left open. I need someone to jump in the ranger and to help the rancher get cattle in when he can't do it by himself. I need someone quick, stealthy, and fit to herd cattle for many miles. I need someone to go get a stubborn bull that wandered out to the middle of the dam and won't move. I need someone to help move cattle through the alley way to speed things along. I need someone to ward off coyotes and raccoons from coming into the yard late at night. I need someone to greet the people when they come home. I need someone to show unconditional love to his human master just like I show unconditional love for My children. I need someone who is a dependable, loyal, and loving companion to the rancher to remind him that I am with him always."

So God Made a Ranch Dog.



Angus "Gus" - the best dog 2014-2024



Wylee is enjoying semi-retirement as he still recoops and heals from an accident in December



Hi my name is Tagg and I'm new to the herd!



## NOTES



**LADUE ANGUS RANCH**  
**KENT & JANET LADUE, BRIAN LADUE**  
**14478 RABBIT CREEK ROAD**  
**MEADOW, SD 57644**

**605-788-2969**

**WWW.SUNRISEANGUSRANCH.COM**

Presorted  
1st Class  
US Postage  
Paid  
Permit #35  
Pierre, SD



**JOIN US AT OUR NEW LOCATION AT THE SALE FACILITY  
IN MEADOW, SD ON APRIL 18, 2024 AT 1PM**

