



# **A Legacy of** *Great Genetics*



**19<sup>TH</sup>** *Annual Production Sale*

**WEDNESDAY, MARCH 13, 2024 • 1:00 PM CST**

**RAVINE CREEK RANCH**

**20080 399TH AVE, HURON SD**



# Welcome!

---

Welcome back to another exciting production sale at Ravine Creek Ranch! This will be the second year hosting our sale at our new facilities on the ranch, we keep working to make the sale experience the best it can be for our customers and our cattle. The winter this year has been far milder than it was last year, we hope we don't end up hauling out semi loads of snow from the yards before the sale this year!

We continue to make breeding decisions with you, our customers, in mind. We are focused on raising cattle with calving ease, while still maintaining big weaning weights, and strong maternal traits. We also try to focus on carcass traits that will make your calves more desirable when you market them. We feel Hereford and Hereford influenced cattle have become one of the most sought-after genetics, Hereford influenced feeder sales continue to top the markets.

We think the key to bull fertility is good nutrition and access to essential vitamins and minerals. We will keep yearling bulls until April 15th so we can continue to feed them and grow them out to their full potential. 2 year old bulls and heifers can go home with you on sale day, or we will work with you in the week after the sale to get them to your place.

We think it's a really exciting time to be in the cattle business, and we really appreciate your interest in our set of cattle. We really want to help you find the bulls and heifers you need to bring success to your operation. As always, feel free to call or text about our sale offering and we will try to steer you in the right direction. Hope to see you all on sale day!

*The Bischoffs*



# Wednesday, March 13, 2024 . 1:00 PM CST

RAVINE CREEK RANCH • 20080 399TH AVE, HURON SOUTH DAKOTA

COMPLIMENTARY LUNCH BEGINS AT 11:30 AM

## Sales Staff:

Chisum Peterson, Auctioneer . 605-730-4214

The Livestock Link:

Marc Hotchkiss . 605-210-1956

Phil Eggers . 605-351-5438

Aaron Friedt, American Hereford Association . 701-590-9597

Art Handel Jr, Handel Marketing Services . 605-391-8233 (cell)

Jill Hotchkiss, Hereford America . 605-490-1409 (cell)

Donnie Leddy, Cattle Business Weekly . 605-695-0113

Matt Magness, Magness Livestock . 605-695-6288

## Acknowledgements:

Huron Vet Clinic, Herd Veterinarian . 605-352-6063

Bruns Ultrasound Service, Kama Bruns

Catalog, Abby Bischoff & Lori Peskey

## Accommodations:

Huron Event Center: 605-352-3204

Quality Inn: 605-352-6655

Super 8: 605-352-0740

## Special Guests:

Jerome Ollerich, AHA Director

Shannon Marshall, SDHA Manager

Matt Zens, SDHA President

Ireland McAreavey, SD Hereford Queen

## Bischoff Numbers:

Jerry Bischoff (cell): 605-350-0979

Janelle Bischoff (cell): 605-350-4721

Garret Bischoff (cell): 605-461-1555

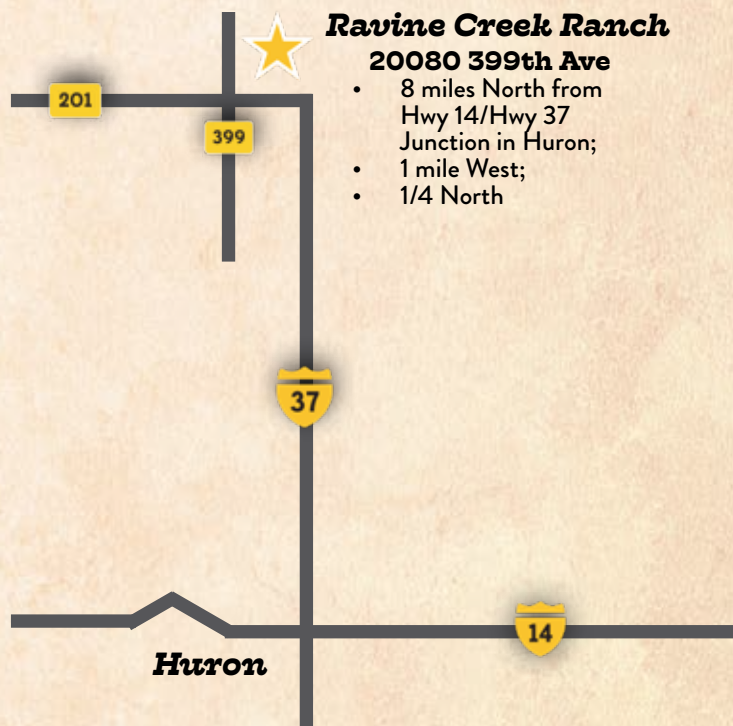
Matt Bischoff (cell): 605-350-0980

Heather Bischoff (cell): 605-354-2988

Lori Peskey (cell): 605-350-1015

Mike Peskey (cell): 605-350-5788

Abby Bischoff (cell): 605-350-1264



email us at [ravinecr@santel.net](mailto:ravinecr@santel.net) • [www.ravinecreekranch.com](http://www.ravinecreekranch.com)



RAVINE CREEK RANCH AND PESKEY FARMS  
HAVE BOTH BEEN RECOGNIZED AS HEREFORD  
TPR GOLD BREEDERS.

# RV VALOR 9444G ET



CHB,DLF,HYF,IEF,MSUDF,MDF



DRF JWR PRINCE VICTOR 711  
 TH 122 711 VICTOR 719T  
 KBCR 19D DOMINETTE 122  
**JDH VICTOR 719T 33Z ET**  
 AH YANKEE 10S  
 JDH MS YANKEE 11U ET  
 JDF MS ISAACS 075 60N\*

GO EXCEL L18  
 ECR L18 EXTRA DEEP 9279  
 OXH CHRISTI 0028  
**RV BOBBI 1404**  
 HPH MAYNARD EXT 28G 216  
 HPH MISS EPTENSION 205 404\*  
 HPH MISS BASIS 742H 205

CED	BW	WW	YW	SC	M	M&G	CEM	UDD	TEAT	FAT	REA	MARB	BMI	CHB
7.9	-0.5	59	96	0.8	29	58	2.1	1.40	1.50	0.038	0.8	0.24	409	172

Homozygous polled. A highly proven heifer bull that injects muscle, bone and hip shape into his progeny. Progeny have eye appeal and are great footed. The daughters in production have excellent teat and udder quality, instinct and disposition. Semen available at Select Sires.

# TH 535F 738C SLEEP ON 181H



DLF,HYF,IEF,MSUDF



SCHU-LAR ON TARGET 22S  
 HYALITE ON TARGET 936  
 HYALITE TS LASS 310  
**BAR JZ SLEEP ON 738C**  
 TH 122 711 VICTOR 719T  
 BAR JZ VIRGINIA 500Y  
 BAR JZ KYLIE 425S

TH 89T 755T STOCKMAN 475Z  
 TH 403A 475Z PIONEER 358C ET  
 TH 71U 17Y RITA 403A  
**TH 4021 358C JEWELL 535F ET**  
 EFBEEF TFL U208 TESTED X651 ET  
 INNISFAIL 723 U208 4021 ET  
 INNISFAIL P230 T723

CED	BW	WW	YW	SC	M	M&G	CEM	UDD	TEAT	FAT	REA	MARB	BMI	CHB
2.0	3.0	80	120	1.4	33	73	-4.6	1.4	1.4	.048	.51	.37	409	139

We are excited about the job he is doing for us. This young sire has color, pigment, growth and phenotype. Balanced EPD's with extra marbling.

# BEHM 100W CUDA 504C

CHB, DLF,HYF,IEF,MSUDF,MDF

CED	BW	WW	YW	SC	MM	CEM
10.8	-0.5	70	112	1.3	41	2.0
UDD	TEAT	FAT	REA	MARB	BMI	CHB
1.3	1.2	.001	.58	.53	299	174

RRH MR FELT 3008  
 KCF BENNETT 3008 M326  
 KCF MISS 459 F284  
**NJW 73S M326 TRUST 100W ET**  
 PW VICTOR BOOMER P606  
 NJW P606 72N DAYDREAM 73S  
 NJW 94J DEW 72N

CL 1 DOMINO 9126J 1ET  
 KCF BENNETT 9126J R294  
 KCF MISS 3008 N344  
**BEHM R294 JASMAN102Y\***  
 JDH 15 WRANGLER 25L  
 CPH MS WRANGLER 1W\*  
 CPH MISS PRINCESS 13H



Al sire we have used the past few years, that is easy calving with great growth and carcass numbers.

# NJW 84B 4040 Fortified 238F

DLF,HYF,IEF,MSUDF,MDF,DBF

CED	BW	WW	YW	SC	M	CEM
4.0	1.0	61	88	1.9	21	3.1
UDD	TEAT	FAT	REA	MARB	BMI	CHB
1.3	1.5	0.011	0.35	0.14	368	114

TH 121L 63N TUNDRA 16S  
 TH 22R 16S LAMBEAU 17Y  
 TH 62N 3L KELSEY 22R  
**BOYD FT KNOX 17Y XZ5 4040**  
 BOYD WORLDWIDE 9050 ET  
 DOSS MY EYES ADORE U DHZ5  
 DHF COVER GIRL C902

KCF BENNETT 3008 M326  
 NJW 73S M326 TRUST 100W ET  
 NJW P606 72N DAYDREAM 73S  
**NJW 16S 100W JOEY 84B ET**  
 GERBER WATCHFIRE 117F  
 TLELL 117F JOEY 16S  
 TLELL 60D ROO 29J



Al sire that excels in calving ease and maternal traits.



# H WMS Long Haul 1454 ET

DLF, HYF, IEF, MSUDF



CED	BW	WW	YW	SC	M	CEM
6.1	3.6	62	97	1.6	39	5.2
UDD	TEAT	FAT	REA	MARB	BMI	CHB
1.4	1.3	0.021	.53	-0.01	520	111

UPS DOMINO 3027

FHF M33 STARBUCK 110T ET

CHURCHILL SENSATION 028X

PYRAMID 16W 110T 9116

CHURCHILL LADY 7202T ET

FHF 51M ACHIEVA 70T

**NJW LONG HAUL 36E ET**

**FHF 9116 RITA 29Z**

LJR 023R WHITMORE 10W

DR WORLD CLASS 517 10H

NJW 79Z RITA 11B

FHF 10H RITA 62X ET

BW 91H 100W RITA 79Z ET

FHF 32F RITA 43J

Natural service sire that we purchased from Hoffman's. Really stamps his calves with extra length and power. Will be seeing more from this sire in the future. Homozygous Polled.

# Loewen Genesis G16 ET

DLF, HYF, IEF, MDF, DBF



CED	BW	WW	YW	SC	M	CEM
4.2	3.7	76	129	1.8	36	6.7
UDD	TEAT	FAT	REA	MARB	BMI	CHB
1.3	1.3	.111	.77	.46	501	195

SCHU-LAR ON TARGET 22S

FELTONS LEGEND 242

KCF BENNETT ENCORE Z311 ET

MSU TCF REVOLUTION 4R

KCF MISS REVOLUTION X338 ET

MSU TCF RACHAEL ET 54N

**NJW 79Z Z311 ENDURE 173D ET**

**LOEWEN 77 48 MISS 344N 4RB42ET**

NJW 73S M326 TRUST 100W ET

PCR JACK PHROST 18K

BW 91H 100W RITA 79Z ET

PCR JACKLYN NIKOLE 344N

REMITALL RITA 91H

PCR WICKI NICOLE 642F

One of the most popular and in demand bulls in recent memory. Tremendous phenotype along with a great EPD profile and color pattern. His calves are in high demand. Homozygous Polled.

# KSU Land Grant 153 ET

DLF, HYF, IEF, MSUDF, MDF



CED	BW	WW	YW	SC	M	CEM
7.9	1.0	63	101	1.0	37	
UDD	TEAT	FAT	REA	MARB	BMI	CHB
1.3	1.3	0.081	.62	0.20	452	132

KCF BENNETT ENCORE Z311 ET

HYALITE ON TARGET 936

NJW 79Z Z311 ENDURE 173D ET

R LEADER 6964

BW 91H 100W RITA 79Z ET

R MISS REVOLUTION 1009

**LOEWEN GENESIS G16 ET**

**KSU MISS MISTY 956 ET**

MSU TCF REVOLUTION 4R

KJ HVH 33N REDEEM 485T ET

LOEWEN 77 48 MISS 344N 4RB42ET

KJ 274S ROXY 482YET

PCR JACKLYN NIKOLE 344N

KJ 2054 MISTY 274S ET

Popular AI sire that adds muscle shape, body, length and extra pigment. Out of the very popular Genesis bull. Homozygous Polled.

# EFBEEF BR Validated B413

DLF, IEF, HYF, MSUDF, MDF, DBF



CED	BW	WW	YW	SC	M	CEM
1.8	1.5	64	96	1.1	37	6.2
UDD	TEAT	FAT	REA	MARB	BMI	CHB
1.4	1.3	0.031	.99	1.20	548	218

FELTONS SOUNDER 957

FELTONS LEGEND 242

EFBEEF FOREMOST U208

MSU TCF REVOLUTION 4R

EFBEEF G824 KATE S610 ET

MSU TCF RACHAEL ET 54N

**EFBEEF TFL U208 TESTED X651 ET**

**EFBEEF 4R THYRA Y865**

EF SCHU-LAR N106 OF 009K 434V

EF K334 CROWN BEEF N014

EFBEEF P606 MABEL R415

EFBEEF N014 THYRA S645

EF G824 MABEL N174

EF 151E THYRA N123

A bull that we used AI for his unmatched carcass traits. He sires calves that are dark colored, easy calving and high in carcass merit. Homozygous Polled.



# KA-CHING.

MORE POUNDS. MORE CALVES. MORE PROFIT.

Hereford bulls increase net profit by \$51 per cow per year.

That's \$20,000 in additional revenue for a typical 400-cow outfit, thanks to increased fertility and herd size.

Herefords are also the efficiency experts, proven to add value to calves in the feedyard — \$30 per head in profitability.

That's real money and real results.

**COME HOME TO HEREFORD.**



Hereford.org | 816-842-3757

# Lot 1

## RV GENESIS 375L ET



44499891

Birthdate: 03/19/2023

Polled

KCF BENNETT ENCORE Z311 ET  
NJW 79Z Z311 ENDURE 173D ET  
BW 91H 100W RITA 79Z ET

DRF JWR PRINCE VICTOR 711  
TH 122 711 VICTOR 719T  
KBCR 19D DOMINETTE 122

LOEWEN GENESIS G16 ET

BAR JZ VIRGINIA 611Z (DOD)

MSU TCF REVOLUTION 4R  
LOEWEN 77 48 MISS 344N 4RB42ET  
PCR JACKLYN NIKOLE 344N

BAR JZ LEGENDARY 819T  
BAR JZ ISABELLA 272X (DOD)  
BAR JZ 326C ELLIE 580N

CED	BW	WW	YW	SC	M	MG	CEM	UDD	TEAT	FAT	REA	MARB	BMI	CHB	BW	WWR
-1.7	4.4	76	119	1.3	30	67	-5.9	1.2	1.2	0.032	0.79	0.16	331	150	97	ET

This guy is lot 1 for a reason! Out of one of the most talked about bulls in the breed and a proven donor. Long, smooth and balanced in his design along with goggle eyed and dark colored like the Genesis calves are known for. Top 2% WW, 3% YW, 4% REA and 7% CHB. Flushmate to Lot 2. Homozygous Polled



# Lot 2

## RV GENESIS 855L ET



44499893

Birthdate: 04/14/2023

Polled

KCF BENNETT ENCORE Z311 ET  
NJW 79Z Z311 ENDURE 173D ET  
BW 91H 100W RITA 79Z ET

DRF JWR PRINCE VICTOR 711  
TH 122 711 VICTOR 719T  
KBCR 19D DOMINETTE 122

LOEWEN GENESIS G16 ET

BAR JZ VIRGINIA 611Z (DOD)

MSU TCF REVOLUTION 4R  
LOEWEN 77 48 MISS 344N 4RB42ET  
PCR JACKLYN NIKOLE 344N

BAR JZ LEGENDARY 819T  
BAR JZ ISABELLA 272X (DOD)  
BAR JZ 326C ELLIE 580N

CED	BW	WW	YW	SC	M	MG	CEM	UDD	TEAT	FAT	REA	MARB	BMI	CHB	BW	WWR
-0.5	4.3	66	112	0.9	22	55	-3.1	1.2	1.1	0.002	0.77	0.01	321	145	98	ET

Herd bull! Long made, deep bodied with extra capacity. Out of one of the hottest bulls in the breed and a proven donor. Youngest bull in the sale and keeps getting better everyday. Flushmate to Lot 1. Top 5% REA, 7% YW and 10% CHB. Homozygous Polled



# Lot 3

## RV CUDA LAD 634L ET



44500010

Birthdate: 03/23/2023

Polled

KCF BENNETT 3008 M326  
NJW 73S M326 TRUST 100W ET  
NJW P606 72N DAYDREAM 73S

PCR 286 MR ADVISOR 502R  
RV THE CONSULTANT 2921  
K&B LADY SENTRY 9021W

BEHM 100W CUDA 504C

RV MS CONSULTANT 5143

KCF BENNETT 9126J R294  
BEHM R294 JASMAN 102Y (DOD)  
CPH MS WRANGLER 1W (DOD)

TH 60W 719T VICTOR 43Y  
RV 43Y VICTRESS 3143  
RV LUCKY LADY 1743

CED	BW	WW	YW	SC	M	MG	CEM	UDD	TEAT	FAT	REA	MARB	BMI	CHB	BW	WWR
8.8	0.4	67	111	1.3	39	73	4.2	1.1	1	-0.028	0.72	0.24	291	161	90	ET

He has the look, pedigree and curve bending EPDs of a herd bull! His donor dam has raised some good ones but he might be the best yet. Thick, powerful, unique individual with both maternal and carcass strengths. Top 2% Milk, 4% CHB, 8% YW and REA, 9% BW. Homozygous Polled.



# 5

## Yearling Bulls

# Lot 4



## RV CUDA LAD 344L

44511200

Birthdate: 02/17/2023

Scurred

NJW 73S M326 TRUST 100W ET  
BEHM 100W CUDA 504C  
BEHM R294 JASMAN102Y (DOD)

JDH 11B STUD 3134 63E  
JDH AH STANDOUT 16G ET  
JDH AH MS 34X VICTOR 33Z45C ET

RV CUDA 0343

RV STELLA 1444J

TH 60W 719T VICTOR 43Y  
RV 43Y VICTRESS 3143  
RV LUCKY LADY 1743

KCF BENNETT REVOLUTION X51  
RV X51 LADY BENNETT 4404  
RV RIGHT TIME LADY 0404 (DOD)

CED	BW	WW	YW	SC	M	MG	CEM	UDD	TEAT	FAT	REA	MARB	BMI	CHB	BW	WWR
12.9	-2	65	94	1.1	32	64	5.1	1.4	1.4	0.052	0.8	0.41	407	156	60	120

Moderate, stout made calving ease bull with great carcass EPDS. Dam is a first calf heifer out of Standout that has a beautiful udder. Top 2% BW, 3% CE, 4% REA and Marb, 5% CHB.

# Lot 5



## RV EAGLESTONE 310L

44495604

Birthdate: 03/01/2023

Polled

GV CMR X151 MR 847 Z210  
SHF CONSULTANT Z210 C36 ET  
SHF L388 X36 Z25 ET

SHF ALL STAR 42X A191  
SHF DAKOTA A191 D157  
SHF PERFECT MISS Y90 A226

SHF EAGLESTONE C36 E177

RV DAKOTA GAL 1180J

SHF RIB EYE M326 R117  
SHF GERBER R117 W171  
SHF LADY 512 L73 (DOD)

UPS DOMINO 3027  
RV 3027 LADY DOMINO 1880 (DOD)  
K&B KNOCKOUT LADY 8080U ET

CED	BW	WW	YW	SC	M	MG	CEM	UDD	TEAT	FAT	REA	MARB	BMI	CHB	BW	WWR
1.4	4.2	67	106	1.5	24	58	3.1	1.3	1.3	0.012	0.54	0.26	369	125	90	122

One that is easy to find in the pen. Easy doing kind with a lot of performance and eye appeal. Out of a first calf heifer.

## RV 043 CUDA LAD 311L

REG# 44495594

Birthdate 02/28/2023

Polled

# Lot 6

CED	BW	WW	YW	SC	M	MG	CEM	UDD
10.8	-0.5	61	92	1	30	61	2.8	1.4
TEAT	FAT	REA	MARB	BMI	CHB	BW	WWR	
1.4	0.042	0.8	0.29	409	156	68	104	

NJW 73S M326 TRUST 100W ET  
BEHM 100W CUDA 504C  
BEHM R294 JASMAN102Y (DOD)

JDH 11B STUD 3134 63E  
JDH AH STANDOUT 16G ET  
JDH AH MS 34X VICTOR 33Z45C ET

RV CUDA 0343

RV STELLA 1001J ET

TH 60W 719T VICTOR 43Y  
RV 43Y VICTRESS 3143  
RV LUCKY LADY 1743

ECR L18 EXTRA DEEP 9279  
RV BOBBI 1404  
HPH MISS EPTENSION 205 404 (DOD)

Heifer bull with muscle shape and carcass quality. Top 4% REA, 5% BW and CHB.



# Yearling Bulls

# 6

Lot 7

# RV VALIDATED 301L



44495559

Birthdate: 03/04/2023

Polled

EFBEEF FOREMOST U208  
 EFBEEF TFL U208 TESTED X651 ET  
 EFBEEF P606 MABEL R415  
**EFBEEF BR VALIDATED B413**  
 MSU TCF REVOLUTION 4R  
 EFBEEF 4R THYRA Y865  
 EFBEEF N014 THYRA S645 (DOD)

HYALITE ON TARGET 936  
 R LEADER 6964  
 R MISS REVOLUTION 1009  
**RV LEADING LADY 0701**  
 NJW 78P TWENTYTWELVE 190Z ET  
 RV LADY TRUST 7101 ET  
 K&B LADY SENTRY 9021W

CED	BW	WW	YW	SC	M	MG	CEM	UDD	TEAT	FAT	REA	MARB	BMI	CHB	BW	WWR
-0.4	3.4	71	113	1.0	36	72	1.4	1.2	1.2	0.021	1.04	0.73	476	199	80	103

This bull checks a lot of the boxes. Goggle eyed, dark red, powerful and balanced look. Low birth, high growth and carcass values that we are all striving for. Dam is full sib to lot 25. Top 1% Marb, 1% CHB, 4% BMI.



Lot 8

# RV VALIDATED 317L



44495558

Birthdate: 03/04/2023

Polled

EFBEEF FOREMOST U208  
 EFBEEF TFL U208 TESTED X651 ET  
 EFBEEF P606 MABEL R415  
**EFBEEF BR VALIDATED B413**  
 MSU TCF REVOLUTION 4R  
 EFBEEF 4R THYRA Y865  
 EFBEEF N014 THYRA S645 (DOD)

NJW 73S M326 TRUST 100W ET  
 BEHM 100W CUDA 504C  
 BEHM R294 JASMAN102Y (DOD)  
**RV CUDA LASS 0157**  
 RV THUNDERSTRUCK 4239  
 RV THUNDERSTRUCK LADY 7157 ET  
 RV LADY BENNETT 0724

CED	BW	WW	YW	SC	M	MG	CEM	UDD	TEAT	FAT	REA	MARB	BMI	CHB	BW	WWR
8.8	0	58	95	1.3	31	60	9.7	1.4	1.3	0.052	0.7	0.79	395	181	75	110

Really intriguing pedigree here! Validated out of one of our best young Cuda cows. Has a great build with plenty of rib shape and muscle and a super set of EPDs. Top 1% for CHB and MARB. Homozygous polled.



# RV BANDIT 373L

REG# 44495607

Birthdate 03/06/2023

Horned

Lot 9

CED	BW	WW	YW	SC	M	MG	CEM	UDD
5.4	1.4	69	104	1.2	31	66	-3.5	1.3
TEAT	FAT	REA	MARB	BMI	CHB	BW	WWR	
1.3	0.042	0.54	0.27	409	122	74	115	

HYALITE ON TARGET 936  
 BAR JZ SLEEP ON 738C  
 BAR JZ VIRGINIA 500Y

NJW 73S W18 HOMETOWN 10Y ET  
 NJW 135U 10Y HOMETOWN 27A  
 NJW 4037 34S DURANGO VACA 135U (DOD)

**TH 535F 738C SLEEP ON 181H**  
 TH 403A 475Z PIONEER 358C ET  
 TH 4021 358C JEWELL 535F ET  
 INNISFAIL 723 U208 4021 ET

**RV HOMETOWN GAL 0703H**  
 RV 9021W OUTLIER 4921  
 RV SWEET OUTLIER 7003  
 KJ 847P BITTERSWEET 003W ET

Really good horned bull that is massive through his center body and hip. Easy doing kind that has a good birth to weaning spread. Top 6% WW.



7

# Yearling Bulls



# Lot 10



# PF VALOR 3036

**44495525** | Birthdate: 03/07/2023 | Polled

TH 122 711 VICTOR 719T NJW 20W 8Y HOMEGROWN 96A  
 JDH VICTOR 719T 33Z ET PF 96A EMMET 6634  
 JDH MS YANKEE 11U ET PF 743 WILDSTYLE 4034

**RV VALOR 9444G ET** PF 6634 ANNABETH 8236  
 ECR L18 EXTRA DEEP 9279 NJW 73S W18 HOMETOWN 10Y ET  
 RV BOBBI 1404 PF 10Y HAZEL 6236  
 HPH MISS EPTENSION 205 404 (DOD) PF WIDGET 9236

CED	BW	WW	YW	SC	M	MG	CEM	UDD	TEAT	FAT	REA	MARB	BMI	CHB	BW	WWR
6.4	0.6	58	90	1.2	30	59	-2.8	1.5	1.5	0.012	0.59	0.18	413	147	87	97

A favorite since birth. Love the balance, look and pigment in this Valor son. Moderate BW with great growth and carcass numbers, out of a favorite young cow that always does a great job. Actual WW 657

# Lot 11



# PF FORTIFIED 3434

**44488355** | Birthdate: 03/08/2023 | Polled

TH 22R 16S LAMBEAU 17Y THM DURANGO 4037  
 BOYD FT KNOX 17Y XZ5 4040 CRR ABOUT TIME 743  
 DOSS MY EYES ADORE U DHZ5 CRR D03 CASSIE 206

**NJW 84B 4040 FORTIFIED 238F** PF 743 WILDSTYLE 4034  
 NJW 73S M326 TRUST 100W ET FELTONS PACO 502  
 NJW 16S 100W JOEY 84B ET HLG 502 RENAE 34R  
 TLELL 117F JOEY 16S RHF G160 MISS SCARLETT 31L (DOD)

CED	BW	WW	YW	SC	M	MG	CEM	UDD	TEAT	FAT	REA	MARB	BMI	CHB	BW	WWR
7.7	-0.9	48	70	1.4	23	47	1.5	1.4	1.5	-0.018	0.34	0.1	387	109	70	100

Heifer bull deluxe! A dark red Fortified son that will really catch your eye. Dam is a 10 year old About Time cow that keeps getting it done. Actual WW 680

# Lot 12



# PF VALOR 3627

**44488364** | Birthdate: 03/09/2023 | Polled

TH 122 711 VICTOR 719T NJW 98S R117 RIBEYE 88X ET  
 JDH VICTOR 719T 33Z ET LCX 88X ZOEY 12B ET  
 JDH MS YANKEE 11U ET WLL ZOEY 3Z

**RV VALOR 9444G ET** PF 12B REYNA 6127  
 ECR L18 EXTRA DEEP 9279 PF ABOUT TIME 0031  
 RV BOBBI 1404 DVOR 0031 637 MISSN TIME 3127  
 HPH MISS EPTENSION 205 404 (DOD) DVOR MISS 9216 LASS 637

CED	BW	WW	YW	SC	M	MG	CEM	UDD	TEAT	FAT	REA	MARB	BMI	CHB	BW	WWR
-0.6	3.5	60	92	0.8	26	56	-4.6	1.2	1.3	-0.008	0.61	0.16	439	145	92	102

This guy...let his picture do the talking. Length, frame, power, performance. Dam ratios 104 at weaning on 7 calves. Actual WW 701 lbs



Lot 13

# PF FORTIFIED 3166



44495523

Birthdate: 03/10/2023

Polled

TH 22R 16S LAMBEAU 17Y

TH 122 71I VICTOR 719T

BOYD FT KNOX 17Y XZ5 4040

JDH VICTOR 719T 33Z ET

DOSS MY EYES ADORE U DHZ5

JDH MS YANKEE 11U ET

NJW 84B 4040 FORTIFIED 238F

PF 33Z MS VICTOR 8166

NJW 73S M326 TRUST 100W ET

PF ABOUTTIME 0031

NJW 16S 100W JOEY 84B ET

DVOR 0031 7146 MISSN TIME 2166

TLELL 117F JOEY 16S

DVOR 219 MISS DOMINO 7146

CED	BW	WW	YW	SC	M	MG	CEM	UDD	TEAT	FAT	REA	MARB	BMI	CHB	BW	WWR
1.5	3.4	62	95	1.5	23	54	1	1.4	1.5	0.022	0.45	0.1	406	125	94	98

Homo polled Fortified out of a 33Z daughter. What an EPD profile. Actual WW 656



Lot 14

# RV VALOR LAD 321L



44494996

Birthdate: 03/12/2023

Polled

TH 122 71I VICTOR 719T

HYALITE ON TARGET 936

JDH VICTOR 719T 33Z ET

R ON TARGET 4165

JDH MS YANKEE 11U ET

R MISS REVOLUTION 160

RV VALOR 9444G ET

RV LADY ON TARGET 9921

ECR L18 EXTRA DEEP 9279

UPS DOMINO 3027

RV BOBBI 1404

K&B LADY SENTRY 9021W (DOD)

HPH MISS EPTENSION 205 404 (DOD)

K&B KNOCKOUT LADY 7146T

CED	BW	WW	YW	SC	M	MG	CEM	UDD	TEAT	FAT	REA	MARB	BMI	CHB	BW	WWR
14.6	-1.9	53	87	1.3	31	57	4.4	1.5	1.5	0.042	0.7	0.28	385	151	70	110

One of the favorite Valor calves we have ever raised! Calving ease sire that still has performance. Extra pigment along with plenty of rib and volume. Out of an outstanding young cow that goes back to our 9021 donor. Homozygous polled. Top 2% BW, CE and Udder, 3% Teat, 7% CHB, 9% REA.



Lot 15

# RV LAND GRANT 374L



44495635

Birthdate: 03/13/2023

Polled

NJW 79Z Z311 ENDURE 173D ET

C BAR1 9161 UNTAPPED 2267 ET

LOEWEN GENESIS G16 ET

RV THUNDERSTRUCK 4239

LOEWEN 77 48 MISS 344N 4RB42ET

LCG DORA CISCO 239W

KSU LAND GRANT 153 ET

RV THUNDERSTRUCK LADY 7704

R LEADER 6964

KCF BENNETT REVOLUTION X51

KSU MISS MISTY 956 ET

RV X51 LADY BENNETT 4404

KJ 274S ROXY 482Y ET

RV RIGHTTIME LADY 0404 (DOD)

CED	BW	WW	YW	SC	M	MG	CEM	UDD	TEAT	FAT	REA	MARB	BMI	CHB	BW	WWR
3.8	2.8	61	101	0.8	32	62	4.7	1.2	1.2	0.082	0.75	0.18	412	133	98	98

Big topped powerfully designed bull with extra capacity and foot size. He will be one to add pounds and carcass quality. Top 7% REA.



# RV VALOR LAD 318L

REG# 44495636 Birthdate 03/13/2023 Polled

## Lot 16

CED	BW	WW	YW	SC	M	MG	CEM	UDD
4.6	1.3	60	91	0.9	25	55	-2.5	1.5
TEAT	FAT	REA	MARB	BMI	CHB	BW	WWR	
1.6	0.022	0.67	0.2	408	149	82	104	

TH 122 711 VICTOR 719T CRR 5280  
 JDH VICTOR 719T 33Z ET C DOUBLE YOUR MILES 6077 ET  
 JDH MS YANKEE 11U ET C 88X NOTICE ME 1311 ET  
**RV VALOR 9444G ET** **RV DOUBLE MILEY 8910 ET**  
 ECR L18 EXTRA DEEP 9279 K&B SENTINEL 0042X  
 RV BOBBI 1404 SHF CISCO 42X Z189  
 HPH MISS EPTENSION 205 404 (DOD) SHF CISCO R117 X134

Short marked, goggle eyed moderate framed Valor. Lighter birth weight and still carries extra muscle. Top 1% Teat, 2% Udder, 8% CHB.



# RV LAND GRANT 350L

REG# 44495272 Birthdate 03/14/2023 Polled

## Lot 17

CED	BW	WW	YW	SC	M	MG	CEM	UDD
10.2	-0.3	54	87	1.3	34	61	4	1.3
TEAT	FAT	REA	MARB	BMI	CHB	BW	WWR	
1.3	0.072	0.36	0.24	458	123	75	100	

NJW 79Z Z311 ENDURE 173D ET CRR 5280  
 LOEWEN GENESIS G16 ET C DOUBLE YOUR MILES 6077 ET  
 LOEWEN 77 48 MISS 344N 4RB42ET C 88X NOTICE ME 1311 ET  
**KSU LAND GRANT 153 ET** **RV DOUBLE MILEY 9250 ET**  
 R LEADER 6964 NJW 73S W18 HOMETOWN 10Y ET  
 KSU MISS MISTY 956 ET RV HOMETIME GAL 5562  
 KJ 274S ROXY 482Y ET RV LADY TIME 0562 (DOD)

Moderate framed Land Grant with loads of pigment. Good calving ease prospect out of one of the hottest bulls in the breed. Top 5% BMI, 6% BW, 7% CE.



# RV FORTIFIED 763L

REG# 44510286 Birthdate 03/14/2023 Polled

## Lot 18

CED	BW	WW	YW	SC	M	MG	CEM	UDD
2.1	2.8	61	94	1.4	24	55	3.5	1.1
TEAT	FAT	REA	MARB	BMI	CHB	BW	WWR	
1.2	0.032	0.54	0.24	390	132	92	104	

TH 22R 16S LAMBEAU 17Y KCF BENNETT REVOLUTION X51  
 BOYD FT KNOX 17Y XZ5 4040 RV 9021W OUTLIER 4921  
 DOSS MY EYES ADORE U DHZ5 K&B LADY SENTRY 9021W  
**NJW 84B 4040 FORTIFIED 238F** **RV LADY OUTLIER 7263 (DOD)**  
 NJW 73S M326 TRUST 100W ET SHF WONDER M326 W18 ET  
 NJW 16S 100W JOEY 84B ET RV WONDER LADY 2163  
 TLELL 117F JOEY 165 DH POLISHED PETAL 163 (DOD)

Long geared Fortified son that is short marked and will stretch out a calf crop! Maternal brother is one of the best 2 year olds in the sale.



# PF FORTIFIED 3512

REG# 44488354 Birthdate 03/16/2023 Polled

## Lot 19

CED	BW	WW	YW	SC	M	MG	CEM	UDD
3.1	2	54	83	1.1	21	48	4.4	1.3
TEAT	FAT	REA	MARB	BMI	CHB	BW	WWR	
1.2	-0.008	0.37	0.01	337	103	83	100	

TH 22R 16S LAMBEAU 17Y HARVIETAILOR MADE ET 7W  
 BOYD FT KNOX 17Y XZ5 4040 DAKITCH 67P UNITED MADE 44Y  
 DOSS MY EYES ADORE U DHZ5 MS DAKITCH POLLY L1135 67P  
**NJW 84B 4040 FORTIFIED 238F** **PF MS TAYLOR 3512**  
 NJW 73S M326 TRUST 100W ET CRR ABOUT TIME 743  
 NJW 16S 100W JOEY 84B ET PF PAISLEY 0512  
 TLELL 117F JOEY 165 ESF 0204 DOMINETTE 512

Powerful Fortified son out of an 11 year old cow - longevity built into this one! Actual WW 661

## Lot 20



# RV LAND GRANT 333L

44495270 | Birthdate: 03/17/2023 | Polled

NJW 79Z Z311 ENDURE 173D ET	TH 122 711 VICTOR 719T															
LOEWEN GENESIS G16 ET	TH 60W 719T VICTOR 43Y															
LOEWEN 77 48 MISS 344N 4RB42ET	TH 77S 45P RUBY 60W															
<b>KSU LAND GRANT 153 ET</b>	<b>RV 43Y VICTRESS 3143</b>															
R LEADER 6964	HPH RAWHIDE 139															
KSU MISS MISTY 956 ET	RV LUCKY LADY 1743															
KJ 274S ROXY 482Y ET	RV LOADED LADY 7643															
CED	BW	WW	YW	SC	M	MG	CEM	UDD	TEAT	FAT	REA	MARB	BMI	CHB	BW	WWR
9.6	0.6	62	94	0.6	38	69	9.4	1.3	1.3	0.042	0.64	0.12	423	113	86	116

This guy is the herd bull kind! Deep, powerfully made and balanced from end to end. His dam is also the mother of our donor cow 5143 and RV Cuda 0343 owned by Eggers. Freckle faced and Homozygous polled. Top 3% Milk, 5% M&G, 7% CE.



# RV VANGUARD 850L

REG# 44510735 Birthdate 03/18/2023 Polled

CED	BW	WW	YW	SC	M	MG	CEM	UDD
10	-0.2	60	91	1.3	35	65	7.9	1.4
TEAT	FAT	REA	MARB	BMI	CHB	BW	WWR	
1.4	0.032	0.97	0.47	443	158	78	113	

## Lot 21

EFBEEF TFL U208 TESTED X651 ET C BAR1 9161 UNTAPPED 2267 ET  
 EFBEEF BR VALIDATED B413 RV THUNDERSTRUCK 4239  
 EFBEEF 4R THYRA Y865 LCG DORA CISCO 239W  
**BIRDWELL VANGUARD 5022 9337** RV MS THUNDERSTRUCK 8530 (DOD)  
 CHURCHILL SENSATION 028X KCF BENNETT REVOLUTION X51  
 BR SENSATION 028X 3335 5022 RV X51 LADY BENNETT 5230  
 BRTRUST 100W 6171 3335 ECR 5216 DOMINETTE 0230

Easy doing kind with extra body and power. Negative on BW EPD and top 1% for REA!



# RV VALIDATED 754L

REG# 44484717 Birthdate 03/18/2023 Polled

CED	BW	WW	YW	SC	M	MG	CEM	UDD
9.6	-0.8	62	90	1.1	32	63	7.6	1.3
TEAT	FAT	REA	MARB	BMI	CHB	BW	WWR	
1.2	0.032	0.62	0.61	415	159	73	104	

## Lot 22

EFBEEF FOREMOST U208 HYLITE ON TARGET 936  
 EFBEEF TFL U208 TESTED X651 ET R ON TARGET 4673  
 EFBEEF P606 MABEL R415 R MISS REVOLUTION 1009  
**EFBEEF BR VALIDATED B413** RV ON TARGET LADY 7454  
 MSU TCF REVOLUTION 4R CR111 MR HEREFORD 2109 ET  
 EFBEEF 4R THYRA Y865 RV MS HEREFORD 4054 (DOD)  
 EFBEEF N014 THYRA S645 (DOD) RANGELINE 15M BUBBLES 54R

Lots of things to highlight on this guy, low birthweight, extra pigment, dark cherry red great carcass EPDs and out of a highly productive cow. Top 1% Marb, 4% BW and CHB, 8% CE.



## Lot 23



# RV VALOR LAD 899L

44484724 | Birthdate: 03/18/2023 | Polled

TH 122 711 VICTOR 719T CMR GVP MR MATERNAL 156T  
 JDH VICTOR 719T 33Z ET NJW U33 156T MAT 259C ET  
 JDH MS YANKEE 11U ET SHF LADY M326 U33 ET  
**RV VALOR 9444G ET** RV MS MATERNAL 8099 (DOD)  
 ECR L18 EXTRA DEEP 9279 SHF LIMELIGHT W18 Y83  
 RV BOBBI 1404 SHF L388 Y83 A99  
 HPH MISS EPTENSION 205 404 (DOD) SHF PHOENIX P68

CED	BW	WW	YW	SC	M	MG	CEM	UDD	TEAT	FAT	REA	MARB	BMI	CHB	BW	WWR
3.3	2.2	62	91	1.4	23	54	0.1	1.6	1.6	0.042	0.55	0.28	502	143	96	98

Long patterned Valor that has extra dimension and shape over his top and hip. Full brother to last year's high seller. Top 1% for Udder and Teat EPDs.

# RV CUDA LAD 315L

REG# 44500009 Birthdate 03/19/2023 Polled

## Lot 24

CED	BW	WW	YW	SC	M	MG	CEM	UDD
1.6	3	69	104	1	36	71	-1.9	1.3
TEAT	FAT	REA	MARB	BMI	CHB	BW	WWR	
1.2	-0.028	0.5	0.25	321	137	98	111	

KCF BENNETT 3008 M326 TH 89T 743 UNTAPPED 425X ET  
 NJW 73S M326 TRUST 100W ET C BAR1 9161 UNTAPPED 2267 ET  
 NJW P606 72N DAYDREAM 73S C NOTICE ME NITRO 9161 ET  
**BEHM 100W CUDA 504C** RV UNTAPPED LADY 5315  
 KCF BENNETT 9126J R294 THM DURANGO 4037  
 BEHM R294 JASMAN102Y (DOD) RV MS DURANGO 0315  
 CPH MS WRANGLER 1W (DOD) HPH 04 MISS STOCKER 315

Bigger framed, long spined Cuda son out of a super consistent cow. High growth with 111 WWR. Top 6% Milk, 8% WW.



**Lot 25**



**RV LEADER 701L**

**44517121** | Birthdate: **03/19/2023** | Polled

SCHU-LAR ON TARGET 22S  
 HYALITE ON TARGET 936  
 HYALITE S LASS 310  
**R LEADER 6964**  
 MSU TCF REVOLUTION 4R  
 R MISS REVOLUTION 1009 (DOD)  
 R MISS WRANGLER 3007

NJW 73S M326 TRUST 100W ET  
 NJW 78P TWENTYTWELVE 190Z ET  
 NJW BW LADYSPORT DEW 78P ET  
**RV LADYTRUST 7101 ET**  
 UPS DOMINO 3027  
 K&B LADY SENTRY 9021W  
 K&B KNOCKOUT LADY 7146T

CED	BW	WW	YW	SC	M	MG	CEM	UDD	TEAT	FAT	REA	MARB	BMI	CHB	BW	WWR
-1.2	3.8	67	109	1.6	23	57	0.1	1.3	1.2	0.042	0.49	0.16	393	123	92	105

Goggle eyed, big middled and packed full of muscle. Powerful proven pedigree that will add performance and eye appeal. Top 9% YW, 10% WW.



**RV FORTIFIED 693L**

REG# 44510326 Birthdate 03/19/2023 Polled

**Lot 26**

CED	BW	WW	YW	SC	M	MG	CEM	UDD
-0.1	2.5	62	93	1.4	19	50	-1.9	1.4
TEAT	FAT	REA	MARB	BMI	CHB	BW	WWR	
1.5	0.002	0.6	0.19	350	122	92	99	

TH 22R 16S LAMBEAU 17Y  
 BOYD FT KNOX 17Y XZ5 4040  
 DOSS MY EYES ADORE U DHZ5  
**NJW 84B 4040 FORTIFIED 238F**  
 NJW 73S M326 TRUST 100W ET  
 NJW 16S 100W JOEY 84B ET  
 TLELL 117F JOEY 16S

MSU TCF REVOLUTION 4R  
 KCF BENNETT REVOLUTION X51  
 KCF MISS PROFICIENT U201  
**RV X51 LADY BENNETT 6903**  
 BECKLEY 758P ONTIME 934S  
 KJ 847P BITTERSWEET 003W ET  
 KJ 2136 LADY LIBERTY 847P ET

Stretchy made Fortified son with some extra frame. Good carcass and growth numbers behind this guy.



**RV BANDIT 351L**

REG# 44505845 Birthdate 03/20/2023 Scurred

**Lot 27**

CED	BW	WW	YW	SC	M	MG	CEM	UDD
-0.1	4	67	100	1.2	26	60	-3.1	1.4
TEAT	FAT	REA	MARB	BMI	CHB	BW	WWR	
1.4	0.022	0.66	0.3	398	132	97	96	

HYALITE ON TARGET 936  
 BAR JZ SLEEP ON 738C  
 BAR JZ VIRGINIA 500Y  
**TH 535F 738C SLEEP ON 181H**  
 TH 403A 475Z PIONEER 358C ET  
 TH 4021 358C JEWELL 535F ET  
 INNISFAIL 723 U208 4021 ET

MSU TCF REVOLUTION 4R  
 KCF BENNETT REVOLUTION X51  
 KCF MISS PROFICIENT U201  
**RV X51 LADY REVOLUTION 5152 ET**  
 PW VICTOR BOOMER P606  
 K&B SWEET SALLY 6050S  
 K&B LYNN DOM 4022

Big topped, red necked short marked 181H son with eye appeal and a balance. Top 11% WW, 13% REA and MARB.



**Lot 28**



**RV VALIDATED 389L**

**44495890** | Birthdate: **03/21/2023** | Polled

EFBEEF FOREMOST U208  
 EFBEEF TFL U208 TESTED X651 ET  
 EFBEEF P606 MABEL R415  
**EFBEEF BR VALIDATED B413**  
 MSU TCF REVOLUTION 4R  
 EFBEEF 4R THYRA Y865  
 EFBEEF N014 THYRA S645 (DOD)

CHURCHILL RED BULL 200Z  
 CHURCHILL KICKSTART 501C ET  
 HVH OKSANA 4L 33N  
**RV KICKSTART LADY 8990**  
 FFF MOELERS RED DOG 711S  
 RV LADY MOLER 9910  
 RV ROCKETTE 3910

CED	BW	WW	YW	SC	M	MG	CEM	UDD	TEAT	FAT	REA	MARB	BMI	CHB	BW	WWR
4.8	1.9	62	95	0.9	31	62	4.8	1.3	1.3	0.012	0.79	0.44	441	150	90	113

Plenty of length and depth on this guy along with the dark red color everyone loves. Top 3% MARB, 5% REA and 7% CHB.



# RV CUDA LAD 325L

REG# 44500008

Birthdate 03/21/2023

Polled

## Lot 29

CED	BW	WW	YW	SC	M	MG	CEM	UDD
3.7	2.5	62	94	0.8	31	62	-1.5	1.3
TEAT	FAT	REA	MARB	BMI	CHB	BW	WWR	
1.3	-0.018	0.46	0.1	291	125	96	105	

KCF BENNETT 3008 M326

TH 71U 719T MR HEREFORD 11X

NJW 73S M326 TRUST 100W ET

C R111 MR HEREFORD 2109 ET

NJW P606 72N DAYDREAM 73S

-S LADY ADVANCE 176L R111 ET

**BEHM 100W CUDA 504C**

**RV MS HEREFORD 4025**

KCF BENNETT 9126J R294

RV STOCKER 6662

BEHM R294 JASMAN102Y (DOD)

RV STOCKER LADY 1025

CPH MS WRANGLER 1W (DOD)

RHF 64K MISS VICTRA 25M

Really like the design and outline of this Cuda son. Out of a really efficient moderate 2109 daughter.

# RV BANDIT 934L

REG# 44506056

Birthdate 03/24/2023

Polled

## Lot 30

CED	BW	WW	YW	SC	M	MG	CEM	UDD
1.8	4.1	76	118	1.3	30	68	-2.9	1.3
TEAT	FAT	REA	MARB	BMI	CHB	BW	WWR	
1.3	0.032	0.51	0.28	358	132	93	113	

HYALITE ON TARGET 936

NJW 73S W18 HOMETOWN 10Y ET

BAR JZ SLEEP ON 738C

RV HOMESTYLE 5611

BAR JZ VIRGINIA 500Y

BAR JZ VIRGINIA 611Z (DOD)

**TH 535F 738C SLEEP ON 181H**

**RV HOMESTYLE GAL 9734**

TH 403A 475Z PIONEER 358C ET

SHF EXCELLENT R117 X181

TH 4021 358C JEWELL 535F ET

RV MS EXCELLENT 4734

INNISFAIL 723 U208 4021 ET

K&B KNOCKOUT LADY 7234T

Extra performance and depth you expect from the 181H calves. Top 1% WW and 3% YW.

## Lot 31



# RV FORTIFIED 504L

44510328

Birthdate: 03/24/2023

Polled

TH 22R 16S LAMBEAU 17Y

SHF RIB EYE M326 R117

BOYD FT KNOX 17Y XZ5 4040

SHF EXCELLENT R117 X181

DOSS MY EYES ADORE U DHZ5

SHF GOVERNESS 236G L37

**NJW 84B 4040 FORTIFIED 238F**

**RV MS EXCELLENT 5044**

NJW 73S M326 TRUST 100W ET

CRR ABOUTTIME 743

NJW 16S 100W JOEY 84B ET

RV RIGHT TIME LADY 0404 (DOD)

TLELL 117F JOEY 16S

HPH MISS EPTENSION 205 404 (DOD)

CED	BW	WW	YW	SC	M	MG	CEM	UDD	TEAT	FAT	REA	MARB	BMI	CHB	BW	WWR
1.5	2.4	64	100	1.7	26	58	3.2	1.3	1.4	0.002	0.49	0.15	390	121	89	113

Deep bodied, big hipped Fortified son. Dam has produced some top end bulls in the past as well.

## Lot 32



# RV LONG HAUL 392L

44500015

Birthdate: 03/24/2023

Polled

CHURCHILL SENSATION 028X

UPS DOMINO 3027

NJW LONG HAUL 36E ET

CHURCHILL SENSATION 028X

NJW 79Z 10W RITA 11B

CHURCHILL LADY 7202T ET

**H WMS LONG HAUL 1454 ET**

**RV SENSATION LADY 9G22**

PYRAMID 16W 110T 9116

TH 157M 20N SPARTAN 122T

FHF 9116 RITA 29Z

RV SPARTAN LADY 0622

FHF 10H RITA 62X ET

RV MS BOOMER 6022

CED	BW	WW	YW	SC	M	MG	CEM	UDD	TEAT	FAT	REA	MARB	BMI	CHB	BW	WWR
2.6	1.7	54	81	1.2	40	67	6.5	1.4	1.4	0.022	0.3	0.05	484	91	88	117

Out of our new herd sire 1454 who stamps his calves with power and this guy is proof of that. Big hipped and out of a Sensation cow with an ideal udder. Top 3% BMI.



# Lot 33



# PF STUD 3671

**44488330** | Birthdate: 03/28/2023 | Scurred

CHURCHILL STUD 3134A  
 JDH 11B STUD 3134 63E  
 JDH MS 21Z VICTOR 3Y 11B (DOD)  
**JDH AH 45C 63E STUD 7G ET**  
 JDH VICTOR 719T 33Z ET  
 JDH AH MS 34X VICTOR 33Z45C ET  
 AH JDH MS 25L WRANGLER 34X ET (DOD)

HYALITE ON TARGET 936  
 R LEADER 6964  
 R MISS REVOLUTION 1009  
**PF 6964 RIP 0671**  
 LCX 88X ZOEY 12B ET  
 PF 12B ZOEY 6171  
 PF MS UNITED 3071

CED	BW	WW	YW	SC	M	MG	CEM	UDD	TEAT	FAT	REA	MARB	BMI	CHB	BW	WWR
0.6	3.6	69	100	1.1	28	63	-2.2	1.4	1.4	0.012	0.64	0.14	465	130	78	107

This guy is a tank! Perfect example of how Stud 7G is performing in our program. Mother is a beautiful Leader daughter that ratios 104 on her first 2 calves. Adj WW 671

# Lot 34



# RV LONG HAUL 313L

**44495271** | Birthdate: 03/30/2023 | Polled

CHURCHILL SENSATION 028X  
 NJW LONG HAUL 36E ET  
 NJW 79Z 10W RITA 11B  
**H WMS LONG HAUL 1454 ET**  
 PYRAMID 16W 110T 9116  
 FHF 9116 RITA 29Z  
 FHF 10H RITA 62X ET

PCR 286 MR ADVISOR 502R  
 RV THE CONSULTANT 2921  
 K&B LADY SENTRY 9021W  
**RV MS CONSULTANT 5143**  
 TH 60W 719T VICTOR 43Y  
 RV 43Y VICTRESS 3143  
 RV LUCKY LADY 1743

CED	BW	WW	YW	SC	M	MG	CEM	UDD	TEAT	FAT	REA	MARB	BMI	CHB	BW	WWR
7.7	1	63	97	1.2	37	68	2.9	1.3	1.3	0.012	0.65	0.02	475	125	95	119

This powerhouse was a pasture favorite all summer. Natural calf out of our 5143 donor. He is massive through his hip and center body along with good pigment and markings. Don't miss him! Homozygous polled. Top 3% BMI, 4% Milk, 6% M&G.

# RV FLASH 755L

REG# 44506238 Birthdate 04/07/2023 Polled

CED	BW	WW	YW	SC	M	MG	CEM	UDD
3.8	2.8	58	91	1.6	30	60	4.5	1.2
TEAT	FAT	REA	MARB	BMI	CHB	BW	WWR	
1.2	0.022	0.48	0.3	359	129	98	114	

# Lot 35

KCF BENNETT REVOLUTION X51  
 SHF ZANE X51 Z115  
 SHF FOREVER P20 X172 (DOD)  
**SHF FLASH Z115 F238**  
 SHF LITERAL W18 Y90  
 SHF 30U Y90 B67 (DOD)  
 SHF 30U LG Z106 (DOD)

C BAR1 9161 UNTAPPED 2267 ET  
 RV THUNDERSTRUCK 4239  
 LCG DORA CISCO 239W  
**RV THUNDERSTRUCK LADY 7455**  
 SCHU-LAR ON TARGET 22S  
 RV MS ON TARGET 4955 (DOD)  
 RV STOCKER LADY 1955

Solid built and level topped Flash son. Short marked and out of a really good uddered Thunderstruck cow.



Lot  
36



# RV BANDIT 911K

44419495

Birthdate: 03/18/2022

Polled

HYALITE ON TARGET 936

SHF CONSULTANT Z210 C36 ET

BAR JZ SLEEP ON 738C

SHF EAGLESTONE C36 E177

BAR JZ VIRGINIA 500Y

SHF GERBER R117 W171

TH 535F 738C SLEEP ON 181H

RV LADYBIRD 9211

TH 403A 475Z PIONEER 358C ET

C R111 MR HEREFORD 2109 ET

TH 4021 358C JEWELL 535F ET

RV MS HEREFORD 6005 (DOD)

INNISFAIL 723 U208 4021 ET

ECR FLORENCE 2005 (DOD)

CED	BW	WW	YW	SC	M	MG	CEM	UDD	TEAT	FAT	REA	MARB	BMI	CHB	BW	WWR
6	2.5	69	105	1.7	27	62	4.3	1.3	1.3	0.002	0.48	0.18	312	125	84	101

Smooth designed goggle eyed bull that is really clean made in his chest and front third. If you like Herefords that are dark red with extra pigment make sure you find one of these Sleep On sons. Used for natural service.

Lot  
37



# RV ENTICE 605K

44399347

Birthdate: 03/22/2022

Polled

KCF BENNETT ENCORE Z311 ET

TH 71U 719T MR HEREFORD 11X

NJW 79Z Z311 ENDURE 173D ET

C R111 MR HEREFORD 2109 ET

BW 91H 100W RITA 79Z ET

-S LADY ADVANCE 176L R111 ET

UPS ENTICE 9365 ET

RV MS HEREFORD 6005 (DOD)

CHURCHILL SENSATION 028X

DKF RO CASH FLOW 0245 ET

UPS MISS SENSATION 2277 ET

ECR FLORENCE 2005 (DOD)

UPS JT MISS NEON 7811 1ET

K&B MS EXCEL 6005S

CED	BW	WW	YW	SC	M	MG	CEM	UDD	TEAT	FAT	REA	MARB	BMI	CHB	BW	WWR
-1.9	4.8	66	107	1.7	32	65	0.6	1.3	1.3	0.012	0.52	0.04	359	123	94	105

Hard to make a Hereford with much more pigment than this guy! Long bodied, level hipped Entice son out of a dam of distinction. Used for natural service.

Lot  
38



# RV TESTED 740K

44419749

Birthdate: 03/24/2022

Scurred

EFBEEF TFL U208 TESTED X651 ET

CHURCHILL SENSATION 028X

INNISFAIL WHR X651/723 4013 ET

ILR PEACE OF MIND 394A ET

INNISFAIL P230 T723

KCF MISS PROFICIENT U201

RV 4013 TESTED 0710 ET

RV MS PEACE TIME 7540

CRR ABOUTTIME 743

GV CMR X161 TIMES UP A152

RV LADYTIME 0562 (DOD)

LANGFORDS TIME OUT 5240 ET

DH SPRING FLING 562

LH 5073 STANDARD LASS 7060

CED	BW	WW	YW	SC	M	MG	CEM	UDD	TEAT	FAT	REA	MARB	BMI	CHB	BW	WWR
7.9	0.8	61	98	1.8	25	56	2.8	1.3	1.3	0.012	0.4	0.2	415	126	80	101

Level and long made bull that still carries a great hip and hind leg design. Low birth along with high maternal traits makes him an easy choice to make some great replacement females.



# RV ENTICE 527K ET

REG# 44421771

Birthdate 03/25/2022

Horned

## Lot 39

CED	BW	WW	YW	SC	M	MG	CEM	UDD
-3.3	4.8	69	114	1.9	31	65	-3.8	1.3
TEAT	FAT	REA	MARB	BMI	CHB	BW	WWR	
1.2	0.022	0.75	0.04	427	137	84		

KCF BENNETT ENCORE Z311 ET

CRR 5280

NJW 79Z Z311 ENDURE 173D ET

C DOUBLE YOUR MILES 6077 ET

BW 91H 100W RITA 79Z ET

C 88X NOTICE ME 1311 ET

**UPS ENTICE 9365 ET**

**RV DOUBLE MILEY 9250 ET**

CHURCHILL SENSATION 028X

NJW 73S W18 HOMETOWN 10Y ET

UPS MISS SENSATION 2277 ET

RV HOMETIME GAL 5562

UPS JT MISS NEON 7811 1ET

RV LADYTIME 0562 (DOD)

Talk about a bull that is packed full of muscle! Dark red Entice son that will sire calves that will push the scales down.



# RV UPGRADE 909K

REG# 44419722

Birthdate 03/26/2022

Polled

## Lot 40

CED	BW	WW	YW	SC	M	MG	CEM	UDD
-4.5	5.9	58	101	0.6	22	51	-3.2	1.1
TEAT	FAT	REA	MARB	BMI	CHB	BW	WWR	
1.1	0.012	0.61	-0.03	295	112	98	96	

SHF TAHOE R117 T100

NJW 73S W18 HOMETOWN 10Y ET

HAROLDSON'S UPGRADE T100 33D

RV HOMESTYLE 5611

MOHICAN MISSEY 93W

BAR JZ VIRGINIA 611Z (DOD)

**BCC CHEAP SEATS 075H**

**RV JASMINE 9709**

BCC L1 DOMINO 489B

TH 45W 17Y LAMBEAU 735A

BCC DAFNEE 764E

RV LUCKY TIME 5709

BCC MISS MAYBERRY 523C ET

RV LUCKY LUCY 1709 (DOD)

Cheap seats son that has an extra shot of muscle. Good REA number with some look and growth.

## Lot 41



# RV MONTGOMERY 805K

44420139

Birthdate: 03/28/2022

Polled

CHURCHILL SENSATION 028X

SHF ALL STAR 42X A191

UPS SENSATION 2296 ET

SHF DAKOTA A191 D157

UPS JT MISS NEON 7811 1ET

SHF PERFECT MISS Y90 A226

**H MONTGOMERY 7437 ET**

**RV DAKOTA LADY 8005**

WORR OWEN TANKERAY Y79D ET

C R111 MR HEREFORD 2109 ET

RST GAT NST Y79D LADY 54B ET

RV MS HEREFORD 6005

H H LADY MAXIUM 111 ET

ECR FLORENCE 2005 (DOD)

CED	BW	WW	YW	SC	M	MG	CEM	UDD	TEAT	FAT	REA	MARB	BMI	CHB	BW	WWR
4.7	3.4	53	87	1.6	34	60	3.3	1.2	1.2	0.022	0.7	0.14	377	134	89	96

Complete bull from end to end! Extra capacity, deep quartered and to top it off he's dark red and short marked. Out of one of my favorite Dakota females.

# RV VALIDATED 383K

REG# 44418673

Birthdate 03/29/2022

Polled

## Lot 42

CED	BW	WW	YW	SC	M	MG	CEM	UDD
4.7	0.5	54	78	0.5	28	54	4	1.2
TEAT	FAT	REA	MARB	BMI	CHB	BW	WWR	
1.1	-0.008	0.69	0.59	430	161	83	99	

EFBEEF FOREMOST U208

TH 122 711 VICTOR 719T

EFBEEF TFL U208 TESTED X651 ET

TH 60W 719T VICTOR 43Y

EFBEEF P606 MABEL R415

TH 77S 45P RUBY 60W

**EFBEEF BR VALIDATED B413**

**RV 43Y VICTOR 3823**

MSU TCF REVOLUTION 4R

RV STOCKER 6662

EFBEEF 4R THYRA Y865

RV STOCKER LADY 8523

EFBEEF N014 THYRA S645 (DOD)

RV MS NEW DIMEN 3523 (DOD)

Dark red Validated son that is longer in his design. Big time carcass merit here.



**Lot 43**

**RV BANDIT LAD 955K**



**44419130**

**Birthdate: 03/29/2022**

**Polled**

HYALITE ON TARGET 936  
 BAR JZ SLEEP ON 738C  
 BAR JZ VIRGINIA 500Y  
**TH 535F 738C SLEEP ON 181H**  
 TH 403A 475Z PIONEER 358C ET  
 TH 4021 358C JEWELL 535F ET  
 INNISFAIL 723 U208 4021 ET

TH 122 711 VICTOR 719T  
 JDH VICTOR 719T 33Z ET  
 JDH MS YANKEE 11U ET  
**RV 33Z VICTOR LADY 955G**  
 SHF KENNEDY 502R X36  
 SHF L388 X36 Z55 ET  
 SHF PHOENIX P68

CED	BW	WW	YW	SC	M	MG	CEM	UDD	TEAT	FAT	REA	MARB	BMI	CHB	BW	WWR
2.3	2.4	70	102	1.3	28	63	-2.4	1.3	1.4	0.012	0.48	0.23	418	127	89	104

Sleep on son that is a real complete package. Powerfully built with plenty of body and still maintains a clean look. Great phenotype along with an EPD profile that is very desirable. Out of a really good 33Z cow.



**Lot 44**

**RV CUDA LAD 343K**



**44406514**

**Birthdate: 03/29/2022**

**Polled**

KCF BENNETT 3008 M326  
 NJW 73S M326 TRUST 100W ET  
 NJW P606 72N DAYDREAM 73S  
**BEHM 100W CUDA 504C**  
 KCF BENNETT 9126J R294  
 BEHM R294 JASMAN102Y (DOD)  
 CPH MS WRANGLER 1W (DOD)

TH 122 711 VICTOR 719T  
 TH 60W 719T VICTOR 43Y  
 TH 77S 45P RUBY 60W  
**RV 43Y VICTRESS 3143**  
 HPH RAWWHITE 139  
 RV LUCKY LADY 1743  
 RV LOADED LADY 7643

CED	BW	WW	YW	SC	M	MG	CEM	UDD	TEAT	FAT	REA	MARB	BMI	CHB	BW	WWR
7.7	0.4	64	98	1	35	67	2.8	1.3	1.2	0.002	0.63	0.22	343	142	92	107

Good CED and BW numbers along with extra length of body and style. The kind of bull that will raise top end females. Maternal brother to lot 20. Used for natural service.



**Lot 45**

**RV VALOR LAD 603K**



**44419517**

**Birthdate: 03/30/2022**

**Polled**

TH 122 711 VICTOR 719T  
 JDH VICTOR 719T 33Z ET  
 JDH MS YANKEE 11U ET  
**RV VALOR 9444G ET**  
 ECR L18 EXTRA DEEP 9279  
 RV BOBBI 1404  
 HPH MISS EPTENSION 205 404 (DOD)

MSU TCF REVOLUTION 4R  
 KCF BENNETT REVOLUTION X51  
 KCF MISS PROFICIENT U201  
**RV X51 LADY BENNETT 6903**  
 BECKLEY 758P ONTIME 934S  
 KJ 847P BITTERSWEET 003W ET  
 KJ 2136 LADY LIBERTY 847P ET

CED	BW	WW	YW	SC	M	MG	CEM	UDD	TEAT	FAT	REA	MARB	BMI	CHB	BW	WWR
-0.6	2.8	67	98	0.9	20	53	-5.2	1.6	1.6	0.022	0.84	0.27	401	153	97	108

Smooth designed Valor son that has extra length along with pigment. The combination of X51 and Valor should result in calves that excel in carcass quality.



# RV CUDA LAD 492K

REG# 44421724

Birthdate 03/30/2022

Polled

## Lot 46

CED	BW	WW	YW	SC	M	MG	CEM	UDD
2.8	1.8	60	97	1	33	63	-0.3	1.1
TEAT	FAT	REA	MARB	BMI	CHB	BW	WWR	
1.1	-0.018	0.56	0.21	314	144	96	96	

KCF BENNETT 3008 M326

TH 122 711 VICTOR 719T

NJW 73S M326 TRUST 100W ET

TH 60W 719T VICTOR 43Y

NJW P606 72N DAYDREAM 73S

TH 77S 45P RUBY 60W

**BEHM 100W CUDA 504C**

**RV 43Y VICTRESS 4962 (DOD)**

KCF BENNETT 9126J R294

FFF MOELERS RED DOG 711S

BEHM R294 JASMAN102Y (DOD)

RV MOLER LADY 9662

CPH MS WRANGLER 1W (DOD)

RV MS MEDALLION 6162

This rugged made Cuda son has the power to raise some great BWF calves. Out of a dam of distinction.



# RV ENTICE 640K ET

REG# 44388742

Birthdate 03/31/2022

Polled

## Lot 47

CED	BW	WW	YW	SC	M	MG	CEM	UDD
-8	8	67	121	2	40	74	-2.7	1.1
TEAT	FAT	REA	MARB	BMI	CHB	BW	WWR	
1.1	0.012	0.86	-0.11	400	124	100		

KCF BENNETT ENCORE Z311 ET

SHF WONDER M326 W18 ET

NJW 79Z Z311 ENDURE 173D ET

NJW 73S W18 HOMETOWN 10Y ET

BW 91H 100W RITA 79Z ET

NJW P606 72N DAYDREAM 73S

**UPS ENTICE 9365 ET**

**RV DOWNTOWN DOTTY 5962 (DOD)**

CHURCHILL SENSATION 028X

FFF MOELERS RED DOG 711S

UPS MISS SENSATION 2277 ET

RV MOLER LADY 9662

UPS JT MISS NEON 7811 1ET

RV MS MEDALLION 6162

If you are looking for a bull to breed a set of mature cows and want calves that will flat out perform then look no further!



## Lot 48



# RV BANDIT 493K

44399263

Birthdate: 04/01/2022

Polled

HYALITE ON TARGET 936

KCF BENNETT 3008 M326

BAR JZ SLEEP ON 738C

K&B RED FELTON 8031U

BAR JZ VIRGINIA 500Y

K&B MS SILVER ADVANCE 6026S

**TH 535F 738C SLEEP ON 181H**

**RV LADY BENNETT 4930 (DOD)**

TH 403A 475Z PIONEER 358C ET

THM DURANGO 4037

TH 4021 358C JEWELL 535F ET

RV DURANGO LADY 9330

INNISFAIL 723 U208 4021 ET

HPH 493C MISS EXT 330 ET

CED	BW	WW	YW	SC	M	MG	CEM	UDD	TEAT	FAT	REA	MARB	BMI	CHB	BW	WWR
-1.7	4.7	69	112	1	31	66	-4.1	1.1	1	0.032	0.42	-0.03	244	88	98	115

Goggle eyed Sleep on son with tons of volume and capacity in his middle third. This guy will sire calves that will push down the scales and a bonus he is out of a dam of distinction! Used for natural service.

# RV BANDIT 904K

REG# 44419608

Birthdate 03/31/2022

Polled

## Lot 49

CED	BW	WW	YW	SC	M	MG	CEM	UDD
0.6	2.7	65	90	1	33	66	-4.9	1.4
TEAT	FAT	REA	MARB	BMI	CHB	BW	WWR	
1.5	0.022	0.37	0.08	397	106	88	104	

HYALITE ON TARGET 936

WLB LEGO 83T 90X

BAR JZ SLEEP ON 738C

WLB WINCHESTER POWERBALL 27A

BAR JZ VIRGINIA 500Y

WLB 503W ALICE ET 8401Y

**TH 535F 738C SLEEP ON 181H**

**RV DANCE WITH STARS 9804 ET**

TH 403A 475Z PIONEER 358C ET

SB 54E 75R FUSION 138X ET

TH 4021 358C JEWELL 535F ET

CKP 138X DANCE 2042

INNISFAIL 723 U208 4021 ET

CKP DANCE 0063

Moderate built Sleep on son that goes back to the CKP Dance cow that is known for her perfect udder. Goggle eyed and dark red with extra muscle shape.



Lot 50

# RV VALOR LAD 763K



44419691

Birthdate: 04/02/2022

Polled

TH 122 711 VICTOR 719T

KCF BENNETT REVOLUTION X51

JDH VICTOR 719T 33Z ET

RV 9021W OUTLIER 4921

JDH MS YANKEE 11U ET

K&B LADY SENTRY 9021W

RV VALOR 9444G ET

RV LADY OUTLIER 7263 (DOD)

ECR L18 EXTRA DEEP 9279

SHF WONDER M326 W18 ET

RV BOBBI 1404

RV WONDER LADY 2163

HPH MISS EPTENSION 205 404 (DOD)

DH POLISHED PETAL 163 (DOD)

CED	BW	WW	YW	SC	M	MG	CEM	UDD	TEAT	FAT	REA	MARB	BMI	CHB	BW	WWR
4.9	1.6	61	94	0.9	25	56	1.8	1.3	1.4	0.042	0.8	0.32	441	166	87	108

Really long bodied Valor son out of a dam of distinction. Good birth to weaning spread along with big time CHB figures makes this guy sort to the top in a hurry.



Lot 51

# RV BANDIT 931K



44419739

Birthdate: 04/04/2022

Polled

HYALITE ON TARGET 936

NJW 73S W18 HOMETOWN 10Y ET

BAR JZ SLEEP ON 738C

RV HOMESTYLE 5611

BAR JZ VIRGINIA 500Y

BAR JZ VIRGINIA 611Z (DOD)

TH 535F 738C SLEEP ON 181H

RV HOMESTYLE LADY 9431

TH 403A 475Z PIONEER 358C ET

RV STOCKER 6662

TH 4021 358C JEWELL 535F ET

RV STOCKER LADY 0431

INNISFAIL 723 U208 4021 ET

RV DOMINETTE 4031

CED	BW	WW	YW	SC	M	MG	CEM	UDD	TEAT	FAT	REA	MARB	BMI	CHB	BW	WWR
4.1	3.4	68	112	1.3	26	60	-3.5	1.3	1.2	0.042	0.51	0.22	346	127	86	93

One of my favorite 2 year old bulls that ties everything together really well from nose to tail. Didn't want to give us a great picture but see him on sale day and he will impress.



# RV BANDIT 609K

REG# 44419229

Birthdate 04/03/2022

Polled

CED	BW	WW	YW	SC	M	MG	CEM	UDD
-0.6	5.3	72	109	0.9	30	66	-4.6	1.2
TEAT	FAT	REA	MARB	BMI	CHB	BW	WWR	
1.2	-0.008	0.47	0	328	106	99	106	

HYALITE ON TARGET 936

TH 71U 719T MR HEREFORD 11X

BAR JZ SLEEP ON 738C

C R111 MR HEREFORD 2109 ET

BAR JZ VIRGINIA 500Y

-S LADY ADVANCE 176L R111 ET

TH 535F 738C SLEEP ON 181H

RV MS HEREFORD 6709 (DOD)

TH 403A 475Z PIONEER 358C ET

RV STOCKER 6662

TH 4021 358C JEWELL 535F ET

RV LUCKY LUCY 1709 (DOD)

INNISFAIL 723 U208 4021 ET

RV LADY LANDLORD 7409

Moderate built Sleep On son that is short marked and stout.

# RV FLASH 793K

REG# 44419751

Birthdate 04/06/2022

Scurred

CED	BW	WW	YW	SC	M	MG	CEM	UDD
5.6	2.6	55	88	1.4	28	56	4.4	1.3
TEAT	FAT	REA	MARB	BMI	CHB	BW	WWR	
1.3	-0.008	0.5	0.36	409	138	86	105	

KCF BENNETT REVOLUTION X51

NJW 98S R117 RIBEYE 88X ET

SHF ZANE X51 Z115

SR SPOT ON 1015C ET

SHF FOREVER P20 X172 (DOD)

NJW BW LADYSPORT DEW 78P ET

SHF FLASH Z115 F238

RV SPOT ON LADY 7930

SHF LITERAL W18 Y90

SHF WONDER M326 W18 ET

SHF 30U Y90 B67 (DOD)

RV WONDER LADY 3930 (DOD)

SHF 30U LG Z106 (DOD)

RV LADY EMBRACER 9730

Deep bodied Flash son that is really strong in his top and build but still moderate on birth weight.



## RV LEADER E74K

REG# 44419752

Birthdate 04/06/2022

Polled

# Lot 54

CED	BW	WW	YW	SC	M	MG	CEM	UDD
4.6	2	50	82	1.1	24	50	4.2	1.3
TEAT	FAT	REA	MARB	BMI	CHB	BW	WWR	
1.4	0.032	0.48	0.17	404	109	89	96	

HYALITE ON TARGET 936

R LEADER 6964

R MISS REVOLUTION 1009

**KJ 591Y LEADER 209F**

BOYD WORLDWIDE 9050 ET

KJ 2745 MISTY WW 591Y ET

KJ 2054 MISTY 2745 ET

KCF BENNETT REVOLUTION X51

SHF ZANE X51 Z115

SHF FOREVER P20 X172 (DOD)

**SHF L388 Z115 E274**

SHF KENNEDY 502R X36

SHF L388 X36 Z55 ET

SHF PHOENIX P68



Long made, easy moving bull that will make some awesome baldy calves.

## RV JOURNEY 412K

REG# 44419158

Birthdate 04/23/2022

Polled

# Lot 55

CED	BW	WW	YW	SC	M	MG	CEM	UDD
-4.1	4.2	56	83	1.1	22	50	-1	1.1
TEAT	FAT	REA	MARB	BMI	CHB	BW	WWR	
1.1	0.002	0.57	-0.11	299	105	97	98	

LJR 023R WHITMORE 10W

NJW 84B 10W JOURNEY 53D

NJW 16S 100W JOEY 84B ET

**ECR 53D JOURNEY 9058**

CL 1 DOMINO 017X

ECR 017 UNLEASHED LADY 2151

LX UNLEASHED LADY 101 (DOD)

TH 71U 719T MR HEREFORD 11X

CR111 MR HEREFORD 2109 ET

S LADY ADVANCE 176L R111 ET

**RV MS HEREFORD 4162**

REMITALL MEDALLION 58M

RV MS MEDALLION 6162

HPH MISS DIGGER 24G 162

Freckle faced, red eyed bull with extra rib shape and volume.

## RV JOURNEY 504K

REG# 44388751

Birthdate 03/27/2022

Polled

# Lot 56

CED	BW	WW	YW	SC	M	MG	CEM	UDD
7.4	-0.1	61	89	0.5	31	62	5.9	1.2
TEAT	FAT	REA	MARB	BMI	CHB	BW	WWR	
1.1	-0.009	0.55	0.18	302	141	81	113	

LJR 023R WHITMORE 10W

NJW 84B 10W JOURNEY 53D

NJW 16S 100W JOEY 84B ET

**ECR JOURNEY 9058**

CL 1 DOMINO 017X

ECR 017 UNLEASHED LADY 2151

LX UNLEASHED LADY 101

EFBEEF TFL U208 TESTED X651 ET

INNISFAIL WHR X651/723 4013 ET

INNISFAIL P230 T723

**RV 4013 TESTED 0723**

CR111 MR HEREFORD 2109 ET

RV MS SWEET HEREFORD 7203

RV BITTERSWEET 2003



The kind of bull that will stretch out a set of black cows and add pounds at weaning.

## RV VALOR LAD 046K

REG# 44418788

Birthdate 03/12/2022

Polled

# Lot 57

CED	BW	WW	YW	SC	M	MG	CEM	UDD
4	2.9	70	105	1.2	25	60	-1.1	1.4
TEAT	FAT	REA	MARB	BMI	CHB	BW	WWR	
1.4	0.072	0.52	0.54	400	161	88	116	

TH 122 71U VICTOR 719T

JDH VICTOR 719T 33Z ET

JDH MS YANKEE 11U ET

**RV VALOR 9444G ET**

ECR L18 EXTRA DEEP 9279

RV BOBBI 1404

HPH MISS EPTENSION 205 404 (DOD)

EFBEEF TFL U208 TESTED X651 ET

INNISFAIL WHR X651/723 4013 ET

INNISFAIL P230 T723

**RV 4013 TESTED LASS 0246**

SHF EXCELLENT R117 X181

RV MS EXCELLENCY 2746

K&B KNOCKOUT LADY 7146T



Very complete bull! Plenty of volume, muscle, and length. Outstanding data behind this guy, balanced numbers to go along with his phenotype. Top 2% MARB, 4% CHB, 6% WW.



## Two-Year Old Bulls

# 20

**Lot 58**

**RV LADY OF VALOR 372L**



**44495584**

**Birthdate: 02/20/2023**

**Polled**

TH 122 711 VICTOR 719T  
JDH VICTOR 719T 33Z ET  
JDH MS YANKEE 11U ET

SHF ALL STAR 42X A191  
SHF DAKOTA A191 D157  
SHF PERFECT MISS Y90 A226

**RV VALOR 9444G ET**

**RV DAKOTA LASS 1762G**

ECR L18 EXTRA DEEP 9279  
RV BOBBI 1404  
HPH MISS EPTENSION 205 404 (DOD)

RV HOMESTYLE 5611  
RV HOMESTYLE GAL 7762  
RV HOMETIME GAL 5562

CED	BW	WW	YW	SC	M	MG	CEM	UDD	TEAT	FAT	REA	MARB	BMI	CHB	BW	WWR
11.2	-0.2	58	89	1.3	26	55	0.5	1.5	1.5	0.032	0.74	0.2	410	149	62	105

The quality of our Valor cattle continues to impress us and this heifer is a true testament to that. They are built right, marked right, have an ideal EPD profile, while also having eye appeal, power, and substance.



**Lot 59**

**RV LADY OF VALOR 394L**



**44495586**

**Birthdate: 02/23/2023**

**Polled**

TH 122 711 VICTOR 719T  
JDH VICTOR 719T 33Z ET  
JDH MS YANKEE 11U ET

SHF CONSULTANT Z210 C36 ET  
SHF EAGLESTONE C36 E177  
SHF GERBER R117 W171

**RV VALOR 9444G ET**

**RV SOARING LADY 1994J**

ECR L18 EXTRA DEEP 9279  
RV BOBBI 1404  
HPH MISS EPTENSION 205 404 (DOD)

WLB WINCHESTER POWERBALL 27A  
RV DANCE WITH STARS 9804 ET  
CKP 138X DANCE 2042

CED	BW	WW	YW	SC	M	MG	CEM	UDD	TEAT	FAT	REA	MARB	BMI	CHB	BW	WWR
4.5	1.9	64	95	1.2	25	57	-0.1	1.5	1.6	0.022	0.64	0.14	432	138	75	110

Another powerful Valor heifer out of a first time calving dam that goes back to the Dance cow known for her udder quality, femininity, and power. This girl is rugged and big middled, she could raise your next herd sire.



**RV LADY OF VALOR 391L**

**REG# 44495608**

**Birthdate 03/08/2023**

**Polled**

**Lot 60**

CED	BW	WW	YW	SC	M	MG	CEM	UDD
9.6	0	54	82	1.2	22	50	4	1.5
TEAT	FAT	REA	MARB	BMI	CHB	BW	WWR	
1.5	0.012	0.58	0.17	389	140	74	89	

TH 122 711 VICTOR 719T  
JDH VICTOR 719T 33Z ET  
JDH MS YANKEE 11U ET

SHF CONSULTANT Z210 C36 ET  
SHF EAGLESTONE C36 E177  
SHF GERBER R117 W171

**RV VALOR 9444G ET**

**RV LADYBIRD 9211**

ECR L18 EXTRA DEEP 9279  
RV BOBBI 1404  
HPH MISS EPTENSION 205 404 (DOD)

C R111 MR HEREFORD 2109 ET  
RV MS HEREFORD 6005 (DOD)  
ECR FLORENCE 2005 (DOD)



Feminine made, dark red Valor heifer that catches your eye in the pen. Maternal brother is lot 36 bull.



**Lot 61**

**RV LADY BANDIT 340L**



**44495634**

**Birthdate: 03/12/2023**

**Polled**

HYALITE ON TARGET 936  
 BAR JZ SLEEP ON 738C  
 BAR JZ VIRGINIA 500Y  
**TH 535F 738C SLEEP ON 181H**  
 TH 403A 475Z PIONEER 358C ET  
 TH 4021 358C JEWELL 535F ET  
 INNISFAIL 723 U208 4021 ET

WLB LEGO 83T 90X  
 WLB WINCHESTER POWERBALL 27A  
 WLB 503W ALICE ET 8401Y  
**RV DANCE WITH STARS 9804 ET**  
 SB 54E 75R FUSION 138X ET  
 CKP 138X DANCE 2042  
 CKP DANCE 0063

CED	BW	WW	YW	SC	M	MG	CEM	UDD	TEAT	FAT	REA	MARB	BMI	CHB	BW	WWR
3.2	1.6	62	88	1.1	33	64	-3.6	1.4	1.5	0.022	0.36	0.1	396	107	75	99

Sleep On has really made a name for himself around here, with him being our lead pasture sire for a couple seasons now we've dug a little deeper in the keeper pen on this heifer. This cherry red heifer also goes back to the Dance donor.



**Lot 62**

**RV CUDA LASS 661L ET**



**44500012**

**Birthdate: 03/16/2023**

**Polled**

KCF BENNETT 3008 M326  
 NJW 735 M326 TRUST 100W ET  
 NJW P606 72N DAYDREAM 73S  
**BEHM 100W CUDA 504C**  
 KCF BENNETT 9126J R294  
 BEHM R294 JASMAN102Y (DOD)  
 CPH MS WRANGLER 1W (DOD)

PCR 286 MR ADVISOR 502R  
 RV THE CONSULTANT 2921  
 K&B LADY SENTRY 9021W  
**RV MS CONSULTANT 5143**  
 TH 60W 719T VICTOR 43Y  
 RV 43Y VICTRESS 3143  
 RV LUCKY LADY 1743

CED	BW	WW	YW	SC	M	MG	CEM	UDD	TEAT	FAT	REA	MARB	BMI	CHB	BW	WWR
10.4	-0.7	64	105	1	37	69	3.8	1.2	1.1	0.012	0.7	0.34	328	161	66	

Proven pedigree with a great EPD profile. Full sib to the lot 3 bull. Love the femininity, shape and design of this female. Top end heifer that you don't want to miss. Top 4% BW, Milk and CHB.



**Lot 63**

**RV VANGUARD LADY 328L**



**44510742**

**Birthdate: 03/19/2023**

**Polled**

EFBEEF TFL U208 TESTED X651 ET  
 EFBEEF BR VALIDATED B413  
 EFBEEF 4R THYRA Y865  
**BIRDWELL VANGUARD 5022 9337**  
 CHURCHILL SENSATION 028X  
 BR SENSATION 028X 3335 5022  
 BR TRUST 100W 6171 3335

TH 122 711 VICTOR 719T  
 TH 60W 719T VICTOR 43Y  
 TH 77S 45P RUBY 60W  
**RV 43Y VICTOR 3823**  
 RV STOCKER 6662  
 RV STOCKER LADY 8523  
 RV MS NEW DIMEN 3523 (DOD)

CED	BW	WW	YW	SC	M	MG	CEM	UDD	TEAT	FAT	REA	MARB	BMI	CHB	BW	WWR
3.6	1	54	84	0.7	28	55	3.6	1.1	1.1	0.002	0.62	0.26	399	127	81	96

Balanced Vanguard daughter that combines carcass quality with a feminine look.



**Lot 64**



**RV LADY BANDIT 3A9L**

**44505852** | Birthdate: **03/20/2023** | Polled

HYALITE ON TARGET 936 SHF WONDER M326 W18 ET  
 BAR JZ SLEEP ON 738C SHF LIMELIGHT W18 Y83  
 BAR JZ VIRGINIA 500Y SHF PHOENIX P68 U21  
**TH 535F 738C SLEEP ON 181H** SHF L388 Y83 A99  
 TH 403A 475Z PIONEER 358C ET SHF PHOENIX M33 P68  
 TH 4021 358C JEWELL 535F ET SHF PHOENIX P68  
 INNISFAIL 723 U208 4021 ET SHF BOOMER P606 R17 ET

CED	BW	WW	YW	SC	M	MG	CEM	UDD	TEAT	FAT	REA	MARB	BMI	CHB	BW	WWR
5.2	2.2	66	99	1.5	31	63	-0.9	1.4	1.4	0.062	0.41	0.32	407	129	78	99

Goggle eyed, short marked and fancy. Her dam comes from the Sandhills herd and has been around here a long time. Lots of power and longevity here.

**Lot 65**



**RV LADY FLASH 338L**

**44506064** | Birthdate: **04/03/2023** | Polled

KCF BENNETT REVOLUTION X51 NJW 73S W18 HOMETOWN 10Y ET  
 SHF ZANE X51 Z115 RV HOMESTYLE 5611  
 SHF FOREVER P20 X172 (DOD) BAR JZ VIRGINIA 611Z (DOD)  
**SHF FLASH Z115 F238** RV HOMESTYLE GAL 8930  
 SHF LITERAL W18 Y90 THM DURANGO 4037  
 SHF 30U Y90 B67 (DOD) RV DURANGO LADY 9330  
 SHF 30U LG Z106 (DOD) HPH 493C MISS EXT 330 ET

CED	BW	WW	YW	SC	M	MG	CEM	UDD	TEAT	FAT	REA	MARB	BMI	CHB	BW	WWR
3.4	3.4	64	101	1.3	26	59	0.8	1.2	1.2	0.032	0.44	0.15	333	109	87	117

If you like cows that are powerful with tons of rib shape then this is your girl! She rose to the top with a 117 WWR as well.

**RV LADY FLASH 994 L**

REG# 44506239 Birthdate 04/07/2023 Polled

**Lot 66**

CED	BW	WW	YW	SC	M	MG	CEM	UDD
6.4	3	66	101	1.7	30	63	4.2	1.1
TEAT	FAT	REA	MARB	BMI	CHB	BW	WWR	
1.1	0.032	0.55	0.3	353	123	84	122	

KCF BENNETT REVOLUTION X51 SHF ALL STAR 42X A191  
 SHF ZANE X51 Z115 SHF DAKOTA A191 D157  
 SHF FOREVER P20 X172 (DOD) SHF PERFECT MISS Y90 A226  
**SHF FLASH Z115 F238** RV DAKOTA GAL 9954  
 SHF LITERAL W18 Y90 R ON TARGET 4673  
 SHF 30U Y90 B67 (DOD) RV ON TARGET LADY 7454  
 SHF 30U LG Z106 (DOD) RV MS HEREFORD 4054 (DOD)

Another Flash daughter that has big time weaning weight figures! Love her outline and eye appeal.



**RV LONG HAUL LADY 395L**

REG# 44506223 Birthdate 04/07/2023 Polled

**Lot 67**

CED	BW	WW	YW	SC	M	MG	CEM	UDD
7.5	2.2	58	91	1.5	33	62	6.8	1.3
TEAT	FAT	REA	MARB	BMI	CHB	BW	WWR	
1.3	0.002	0.5	0.11	403	126	80	103	

CHURCHILL SENSATION 028X SCHU-LAR 5N OF 9L 3008  
 NJW LONG HAUL 36E ET SCHU-LAR ON TARGET 22S  
 NJW 79Z 10W RITA 11B SCHU-LAR 208 OF 1H 121 ET (DOD)  
**H WMS LONG HAUL 1454 ET** RV MS ON TARGET 4955 (DOD)  
 PYRAMID 16W 110T 9116 RV STOCKER 6662  
 FHF 9116 RITA 29Z RV STOCKER LADY 1955  
 FHF 10H RITA 62X ET RV DOMINETTE 4155 (DOD)

Don't miss your chance to buy a Long Haul female out of a dam of distinction! Super set of EPDs behind a female with a great feminine look.





# RV LADY FLASH 323L

REG# 44506672

Birthdate 04/13/2023

Polled

**Lot 68**

CED	BW	WW	YW	SC	M	MG	CEM	UDD
5.1	2.6	57	85	1.6	23	51	2.8	1.3
TEAT	FAT	REA	MARB	BMI	CHB	BW	WWR	
1.2	0.002	0.42	0.21	385	118	78	101	

KCF BENNETT REVOLUTION X51

DRF JWR PRINCE VICTOR 711

SHF ZANE X51 Z115

TH 122 711 VICTOR 719T

SHF FOREVER P20 X172 (DOD)

KBCR 19D DOMINETTE 122

**SHF FLASH Z115 F238**

**RV 719T VICTRESS 2310**

SHF LITERAL W18 Y90

RV STOCKER 6662

SHF 30U Y90 B67 (DOD)

RV STOCKER LADY 0310 (DOD)

SHF 30U LG Z106 (DOD)

HPH 16 LADY TRADITION 310

Longevity in this pedigree. Her 719T dam is 12 years old and still going. Long spined with plenty of muscle and eye appeal.



**Lot 69**

# RV LONG HAUL LADY 644L

44506671

Birthdate: 04/13/2023

Polled

CHURCHILL SENSATION 028X

NJW 73S W18 HOMETOWN 10Y ET

NJW LONG HAUL 36E ET

C HOMETOWN 3124

NJW 79Z 10W RITA 11B

C 146 MISS DOM 8035

**H WMS LONG HAUL 1454 ET**

**RV HOMETOWN GAL 6404**

PYRAMID 16W 110T 9116

HPH MAYNARD EXT 28G 216

FHF 9116 RITA 29Z

HPH MISS EPTENSION 205 404 (DOD)

FHF 10H RITA 62X ET

HPH MISS BASIS 742H 205

CED	BW	WW	YW	SC	M	MG	CEM	UDD	TEAT	FAT	REA	MARB	BMI	CHB	BW	WWR
8.3	2.4	57	92	1.4	30	58	3.9	1.3	1.3	0.042	0.54	0.01	442	108	81	104

Love the depth and thickness from end to end on this 1454 daughter. Level topped, big hipped and the look of a donor cow.



**Lot 70**

# RV BANDIT LADY 649L

44506761

Birthdate: 04/17/2023

Polled

HYALITE ON TARGET 936

NJW 73S W18 HOMETOWN 10Y ET

BAR JZ SLEEP ON 738C

C HOMETOWN 3124

BAR JZ VIRGINIA 500Y

C 146 MISS DOM 8035

**TH 535F 738C SLEEP ON 181H**

**RV HOMETOWN GAL 6049 (DOD)**

TH 403A 475Z PIONEER 358C ET

MSU TCF REVOLUTION 4R

TH 4021 358C JEWELL 535F ET

RV MISS REVOLUTION 0449

INNISFAIL 723 U208 4021 ET

RV ROCKETTE 3449 (DOD)

CED	BW	WW	YW	SC	M	MG	CEM	UDD	TEAT	FAT	REA	MARB	BMI	CHB	BW	WWR
0.6	3.5	70	104	1.1	29	64	-3.3	1.3	1.4	0.042	0.53	0.15	372	115	90	105

Long bodied, deep flanked, high capacity female out of a Dam of Distinction!



## RV BANDIT LADY 703L

REG# 44507103

Birthdate 04/22/2023

Polled

# Lot 71

CED	BW	WW	YW	SC	M	MG	CEM	UDD
1.8	3.7	65	100	1.1	26	59	-4.1	1.3
TEAT	FAT	REA	MARB	BMI	CHB	BW	WWR	
1.3	0.022	0.37	0.12	338	110	86	88	

HYALITE ON TARGET 936

TH 71U 719T MR HEREFORD 11X

BAR JZ SLEEP ON 738C

C R111 MR HEREFORD 2109 ET

BAR JZ VIRGINIA 500Y

-S LADY ADVANCE 176L R111 ET

**TH 535F 738C SLEEP ON 181H**

**RV MS SWEET HEREFORD 7203**

TH 403A 475Z PIONEER 358C ET

UPS DOMINO 3027

TH 4021 358C JEWELL 535F ET

RV BITTERSWEET 2003

INNISFAIL 723 U208 4021 ET

KJ 847P BITTERSWEET 003W ET

Moderate framed, eye catching female that is feminine built.

## Commercial Hereford Heifers

# Lot 73

## RV FANCI SEATS 639L

REG# 44512300

Birthdate 05/02/2023

Polled

# Lot 72

CED	BW	WW	YW	SC	M	MG	CEM	UDD
-4.6	5.1	52	93	1.1	25	51	-1.2	1.2
TEAT	FAT	REA	MARB	BMI	CHB	BW	WWR	
1.2	0.002	0.61	0.1	366	128	89	103	

SHFTAHOE R117 T100

NJW 73S M326 TRUST 100W ET

HAROLDSON'S UPGRADE T100 33D

NJW 78P TWENTYTWELVE 190Z ET

MOHICAN MISSEY 93W

NJW BW LADYSPORT DEW 78P ET

**BCC CHEAP SEATS 075H**

**RV KNOCK OUT 6839 ET**

BCC L1 DOMINO 489B

UPS DOMINO 3027

BCC DAFNEE 764E

K&B LADY SENTRY 9021W

BCC MISS MAYBERRY 523C ET

K&B KNOCKOUT LADY 7146T

Just a May heifer here that is out of a female that puts an extra shot of muscle in her calves. Also goes back to the 9021 donor.



## F1 Baldies

# Lot 74

This is easily the most impressive set of baldy females we have raised. They excel in terms of length, depth, attractiveness and disposition. Guaranteed open, no delivery.

# Terms & Conditions

Terms of the sale are cash. Every animal will be sold to the highest bidder with the auctioneer settling any disputes as to bids. Announced changes in catalog information sale day will take precedence over printed material in this catalog. All cattle are the buyer's property as soon as sold and will be cared for a reasonable length of time at the buyer's risk. We highly recommend that you insure your purchases. Any person attending the sale does so at their own risk. Neither owners, nor any person connected with this sale, assumes any liability, legal or otherwise.

### GUARANTEE:

Every animal in this sale, is to the best of our knowledge, free from any disease or defect. Any known defects will be called at sale time. Animals are guaranteed breeders. If an animal fails to breed after a trial of six months, it may be returned to the seller if in good condition and in compliance with South Dakota health regulations. The seller reserves the right to try said animal for six months, and if it proves a breeder, return it to the buyer at the buyer's expense. No adjustments will be made after nine months of sale day. If the animal proves to be a non-breeder, an animal of comparable rank will be substituted. We assume no liability, legal or otherwise, to make any further compensation to the buyer. No other warranty of any nature is expressed or implied.

### HEALTH:

The health of the herd is excellent. The premise is being operated according to the agreements and guidelines of the South Dakota Beef Quality Assurance, Critical Management Plan for assurance of product quality. (BQA/CMP # 0945)

Close consultation with the Huron Veterinary Clinic is part of our herd health program. All cattle have been calthood vaccinated and boosted. All calves have been poured for lice and parasites. All heifers have been bangs vaccinated. Individual health papers will be furnished for shipment anyplace.

### REGISTRATION & TRANSFER:

Registration certificates will be transferred to buyers upon request at seller's expense. When making settlement, buyers must give complete written name and address information for making transfers.

### DELIVERY:

Option 1: Haul your own on sale day, discount of \$25/bull and \$10/heifer.  
Option 2: Free delivery first 200 miles and cooperate on longer hauls.  
Option 3: Free keep on bull calves till April 15th, 2024.

### INSURANCE:

We highly recommend that if you want us to deliver your bulls/heifers or if you will be leaving them for any period of time after the sale, that you insure them. Insurance will be available sale day.

### ABSENTEE BIDS:

Anyone wishing to bid who cannot attend the sale may place phone or mail bids by contacting Gerald Bischoff or any listed sale representative.

Final weights and scan data will be available sale day.

# Cattle Evaluation Terms

## EPD'S - EXPECTED PROGENY DIFFERENCE:

Estimate of a bull or cow's future progeny performance compared to progeny of a breed average sire or dam.

CED: Calving Ease Direct  
 BW: Birth Weight  
 WW: Weaning Weight  
 YW: Yearling Weight  
 Milk

M&G: Milk & Growth  
 CEM: Calving Ease Maternal  
 SC: Scrotal Circumference  
 FAT: Backfat  
 REA: Rib Eye Area

IMF: Intramuscular Fat Or Marbling  
 CHB: Selected and weighted traits of an animal that reflect the animal's feedlot and carcass profit potential.

## INDIVIDUAL PERFORMANCE:

BW-actual weight at birth  
 WWR-ratio compared to other calves 205 day weight in same herd

**CALVING EASE:** There is more to calving ease than birth weight. Birth weight, shape of calf at birth, pelvic area, size of cow and nutrition during gestation can all effect calving ease. CED, BW and MCE should all be considered when selecting bulls. Continued selection for just light BW can lead to low growth rates.

**All sale cattle have been screened for genetic defects. The Hereford breed has found a new defect called DB with a low incidence of affected animals within the breed. DB is a simple recessive gene, so the only way it can be a problem is if two carriers are mated to one another. This should have NO effect when using bulls on other breeds. Some tests are still pending and will be updated on supplement sheet sale day.**

Bulls have the greatest economic impact on any breeding program. 80% of the improvement in a herd over time is attributed to bull selection.

Dams of Distinction are noted by an \* in the pedigrees.

*Ravine Creek Ranch averages are the average of all yearling bulls.*

	CED	BW	WW	YW	SC	MILK	M&G	CEM	UDD	TEAT	FAT	REA	MARB	BMI	CHB
<b>HEREFORD BREED AVERAGES</b>	2.7	2.8	53	86	1	25	53	1.8	1.24	1.26	0.015	0.39	0.11	352	113
<b>RAVINE CREEK AVERAGES</b>	4.7	1.7	62	96	1.2	29	60	1.9	1.3	1.3	0.022	0.6	0.25	399	136

**Bid Online!**  
 If you are unable to attend the sale, you can register to watch or bid online through The Livestock Link by following these instructions:

**The Livestock Link™**  
 Videoing • Video Sales • Clerking  
 • Bid-by-Click Online Sales  
 www.TheLivestockLink.com

- Visit our website, [www.thelivestocklink.com](http://www.thelivestocklink.com)
- Click the "Auctions" tab
- Click on "Click Here to Register" below "USER-LOGIN"
- Enter your e-mail address and password, and fill out all your contact information
- Fill out your Banking Information. If you are only viewing the sale and do not wish to bid, this information can be left blank.
- Check the checkbox at the bottom of the page that says "I'm not a robot" to prove you are a real person
- Click "Register" at the bottom of the page
- You will receive an email with a link to activate your account.
- **Please register to bid at least 24 hours in advance of the sale.**
- Contact Aaron Friedt at (701) 590-9597 for help or with any questions.

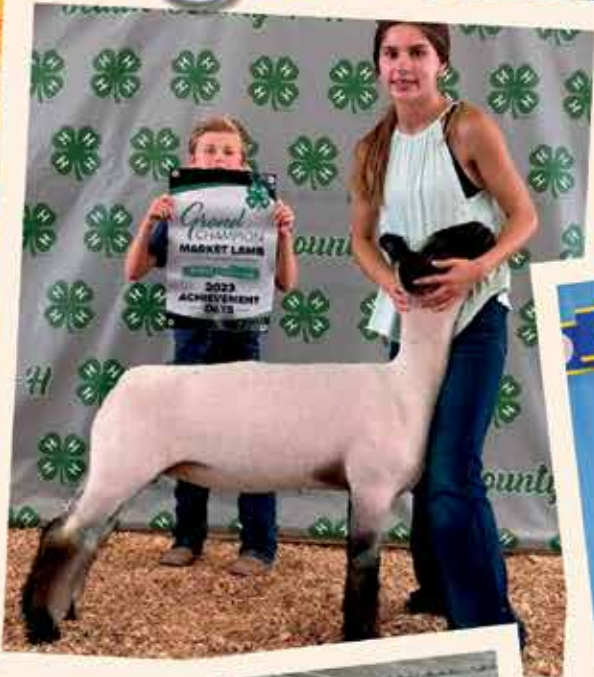
You will receive an email when you are approved for bidding. All applications will be reviewed and processed promptly. You will receive a bidder number only after you have made a purchase in the sale, and that number will only be used at that sale. When the sale is completed, please contact the sale owner or manager for instructions on payment and delivery of your purchase. If you are bidding in a "Horse-Race Style" auction and you are at the Sale location please register with the TLL Representative on site for a Bid Number. You can then use it to place you bid with the TLL Representative during the sale.

To use our service, you must have access to High Speed Internet.

**Questions?**

**Contact Aaron Friedt at (701) 590-9597 or Jared Peterson at (605) 641-7573**







**Ravine Creek Ranch**  
GERALD & JANELLE BISCHOFF  
20025 399TH AVE  
HURON, SD 57350

