

Our goal is to produce average birth weight, high performance, heavy-muscled Herefords that offer an alternative to the exotics.

Tricky's Herefords BULL SALE

12:00 noon (CDT) • Madison Livestock Auction, Madison, SD

Saturday, March 10, 2018

Selling 40 Yearling Hereford Bulls



Avg. YW EPD 98; YW EPD range of 71 to 126; Avg. REA EPD 0.71 (ranging from 0.29 to 1.17)



Ty **Tricky's
Herefords**

Dick & Betty Wettlaufer - (605) 485-2648 • Cell: (605) 270-3465
44132 234th St. • Winfred, SD 57076-7318
E-mail: rwettlaufer@triotel.net

www.TrickysHerefords.com

Tricky's Herefords BULL SALE

12:00 noon (CDT) • Madison Livestock Auction, Madison, SD
Saturday, March 10, 2018

Selling 40 Yearling Hereford Bulls



View sale live and bid online.
Videos by The Livestock Link
www.TheLivestockLink.com

AUCTIONEER: WAYNE BESSMAN

SALE DAY PHONES: Dick Wettlaufer.....605/270-3465

SPECIAL GUESTS: Mark and Jeanne Johnson
South Dakota Hereford Association Managers

TERMS and CONDITIONS:

Insurance will be available sale day.

GUARANTEE:

Every animal in this sale, is to the best of our knowledge, free from any disease or defect. Any known defects will be called at sale time. Animals are guaranteed breeders. If an animal fails to breed after a trial of six months, it may be returned to the seller if in good condition and in compliance with South Dakota health regulations. The seller reserves the right to try said animal for six months, and if it proves a breeder, return it to the buyer at the buyer's expense. No adjustments will be made after nine months of sale day. If the animal proves to be a nonbreeder, an animal of comparable rank will be substituted. We assume no liability, legal or otherwise, to make any further compensation to the buyer. No other warranty of any nature is expressed or implied.

HEALTH:

3 rounds of Bovi-Shield Gold and One Shot otherwise similar.

DELIVERY:

Free delivery up to 200 miles and free keep until May 15, 2018. Will cooperate on longer hauls and extended feeding. Free delivery up to 400 miles on purchases of \$5,000 or more.

DISCOUNT:

\$50 haul your own bull sale day. 10% discount for repeat customers on purchases of \$3,000 or more.

VET:

Lake Vet of Madison 605-256-3547.

ABSENTEE BIDDING:

If you would like to place a bid but are unable to attend the sale, please direct your bid to Tricky or any of the sale staff. You can also view the sale and bid online at TheLivestockLink.com.

AIR TRAVEL:

Sioux Falls Regional Airport is served by several major airlines. Special arrangements can also be made with the Madison Airport.

WELCOME

I would like to invite you to our sale on March 10th at Madison Livestock. The I29 Bull Run sale is that evening, so you can make it a day of bull sales.

Our bulls are AI sired by KCF Bennett Revolution X51. This bull has the best ribeye in the breed, along with one of the best YW, udder score and marbling. He is in the top 1% for those categories.

NJW 73S M326 Trust 100W is a 14 trait leader for WW, YW, Milk, M&G, REA and Marbling. His offspring are thick and roomy with red eyes and red necks.

Churchill Sensation 028X is a calving ease leader. He sires small calves at birth that have early growth. His offspring are high in Milk, Calving Ease, WW, MCE, Teat and Udder, Marbling, BMI, CEZ, and CHB. They are square made and mostly red necked. They would be good cow sires and heifer bulls because of calving ease, MCE, milk, udder and moderate size.

B36 is a Trust son with EPDs very similar to his sire. We used him as clean up on cows. CED -2.7, BW 3.3, WW 52, YW 94, Milk 28, M&G 54, MCE 4.3, Udder 1.40, Teat 1.40, SC 0.7, CW 88, Fat 0.005, REA 0.89, Marbling 0.24, BMI \$30, CHB \$42.

B13 Churchill Red Bull son cleans up heifers. He is thick and clean and has growth and REA in the top 10% of the breed. CED 5.1, BW 1.3, WW 44, YW 75, Milk 30, M&G 51, MCE 5.9, Udder 1.40, Teat 1.40, SC 1.4, Fat 0.005, REA 0.53, Marbling 0.16, BMI \$25, CHB \$38.

Look forward to visiting with you on the 10th.

Tricky & Betty Wettlaufer

Tricky's Herefords

Dick & Betty Wettlaufer - (605) 485-2648 • Cell: (605) 270-3465
44132 234th St. • Winfred, SD 57076-7318

E-mail: rwettlaufer@triotel.net

www.TrickysHerefords.com

EPDs current as of 2/5/18.
Catalog by Hereford America.

SALE BULLS

Ty LOT 1 • TRICKYS X51-B19 E55 REG. #: P43852663 • DOB: 3/22/2017 • POLLED

MSU TCF REVOLUTION 4R
KCF BENNETT REVOLUTION X51
KCF MISS PROFICIENT U201

FELTONS LEGEND 242
MSU TCF RACHAEL ET 54N
EFBEEF SCHU-LAR PROFICIENT N093
KCF MISS 774 L82

NJW 73S M326 TRUST 100W ET
TRICKYS TRUST X05-100W B19
TRICKYSGIRL 15R-4R X05

KCF BENNETT 3008 M326
NJW P606 72N DAYDREAM 73S
MSU TCF REVOLUTION 4R
MC FRANNIE 15R

CED	BW	WW	YW	M	M&G	SC	FAT	REA	MRB
-0.4	5.2	79	126	24	63	1.4	0.005	1.17	0.29
SCF	CEM	MCW	UDR	CW	BMI\$	CHBS	Act. BW	Adj. 205	205 Ratio
21.5	3.8	135	1.4	103	35	42	91	887	124

Top 10% for WW, YW, REA, BMI, CHB; Top 5% for cow fertility, udder, teat, marb.

Ty LOT 2 • TRICKYS BOY X51-B19 E71 REG. #: P43852674 • DOB: 3/24/2017 • POLLED

MSU TCF REVOLUTION 4R
KCF BENNETT REVOLUTION X51
KCF MISS PROFICIENT U201

FELTONS LEGEND 242
MSU TCF RACHAEL ET 54N
EFBEEF SCHU-LAR PROFICIENT N093
KCF MISS 774 L82

MSU TCF REVOLUTION 4R
TRICKYSREVA X37-4R A22
TRICKYSGIRL U45-371R X37

FELTONS LEGEND 242
MSU TCF RACHAEL ET 54N
BAR JZ EXECUTOR 371R
TRICKY'S FANCY GIRL U45

CED	BW	WW	YW	M	M&G	SC	FAT	REA	MRB
0.1	4.8	74	117	21	58	1.2	0.005	1.10	0.26
SCF	CEM	MCW	UDR	CW	BMI\$	CHBS	Act. BW	Adj. 205	205 Ratio
20.9	4.6	127	1.5	100	34	42	90	817	114

Top 1% for WW, YW, REA, BMI, CHB; Top 5% for cow fertility, teat & udder.

Ty LOT 3 • TRICKYS TRUST Z28-100W E25 REG. #: P43852645 • DOB: 3/18/2017 • POLLED

KCF BENNETT 3008 M326
NJW 73S M326 TRUST 100W ET
NJW P606 72N DAYDREAM 73S

RRH MR FELT 3008
KCF MISS 459 F284
PW VICTOR BOOMER P606
NJW 94J DEW 72N

MSU TCF REVOLUTION 4R
TRICKYS REVA W17-4R Z28
TRICKYSGIRLS609-T703;W17

FELTONS LEGEND 242
MSU TCF RACHAEL ET 54N
TRICKY'S BOY T703 LD 428P
TRICKY STK DECK S609 P45

CED	BW	WW	YW	M	M&G	SC	FAT	REA	MRB
-3.6	4.2	68	113	27	62	1.2	-0.005	0.75	0.16
SCF	CEM	MCW	UDR	CW	BMI\$	CHBS	Act. BW	Adj. 205	205 Ratio
19.0	2.9	138	1.3	84	31	38	90	740	104

Top 1% for WW, YW, REA, BMI, CHB; Top 5% for cow fertility; Top 25% for teat, udder.

Ty LOT 4 • TRICKYS BOY X51-B42 E72 REG. #: P43852675 • DOB: 3/24/2017 • POLLED

MSU TCF REVOLUTION 4R
KCF BENNETT REVOLUTION X51
KCF MISS PROFICIENT U201

FELTONS LEGEND 242
MSU TCF RACHAEL ET 54N
EFBEEF SCHU-LAR PROFICIENT N093
KCF MISS 774 L82

NJW 73S M326 TRUST 100W ET
TRICKYS TRUSTINE U27-4R B42
TRICKY'S SONORITA 415P U27

KCF BENNETT 3008 M326
NJW P606 72N DAYDREAM 73S
GRANDVIEW 70AKS SONORA 145R
DDC MIS PZAZZ BOND VIC 415P

CED	BW	WW	YW	M	M&G	SC	FAT	REA	MRB
0.1	4.5	67	111	22	56	1.3	-0.005	1.03	0.35
SCF	CEM	MCW	UDR	CW	BMI\$	CHBS	Act. BW	Adj. 205	205 Ratio
20.2	6.2	126	1.4	95	34	43	88	789	111

Top 2% for WW, YW, cow fertility; Top 1% for REA, Marb., BMI, CHB, CEM; Top 5% for udder, teat.

WATCH AND BID LIVE
IF YOU AREN'T ABLE TO ATTEND!

Livestock Videoing • Video Sales • Bid-by-Click Online Sales

The **Livestock**
Link

www.TheLivestockLink.com

Click on the Auctions tab to pre-register at least 24 hours in advance of the sale. For questions please call Aaron Friedt, TLL Online Sale Mgr. at 701/590-9597.



SALE BULLS

Ty LOT 5 • TRICKYS TRUSTA14-100W E42

REG. #: P43852655 • DOB: 3/20/2017 • POLLED

NJW 73S M326 TRUST 100W ET
 KCF BENNETT 3008 M326
 RRH MR FELT 3008
 KCF MISS 459 F284
 PW VICTOR BOOMER P606
 NJW P606 72N DAYDREAM 73S
 NJW 94J DEW 72N

TRICKYSMH3REVOLUTION7117-4RA
 MSU TCF REVOLUTION 4R
 FELTONS LEGEND 242
 MSU TCF RACHAEL ET 54N
 UPS KOOTENAY 3251 1ET
 K&B MS. KNOCKOUT 7117T
 K&B STARDUST 066K

CED	BW	WW	YW	M	M&G	SC	FAT	REA	MRB
-1.7	3.7	66	110	30	63	1.2	0.005	0.79	0.24
SCF	CEM	MCW	UDR	CW	BMI\$	CHBS	Act. BW	Adj. 205	205 Ratio
19.1	4.5	133	1.3	85	31	38	88	765	107

Top 1% for REA, CHB; Top 3% for WW, YW, BMI; Top 10% for Marb., Milk.



E42

Ty LOT 6 • TRICKYS X51 BOY Z38 E84

REG. #: P43852681 • DOB: 4/3/2017 • POLLED

KCF BENNETT REVOLUTION X51
 MSU TCF REVOLUTION 4R
 FELTONS LEGEND 242
 MSU TCF RACHAEL ET 54N
 EFBEEF SCHU-LAR PROFICIENT N093
 KCF MISS PROFICIENT U201
 KCF MISS 774 L82

TRICKYS MS. MCCOY X06-55M Z38
 MCCOY 55M ABSOLUTE 49S
 MCCOY 3J MATADOR 55M
 MCCOY 58G CONNIE 119L
 TRICKYS GIRL 415P-4R X06
 MSU TCF REVOLUTION 4R
 DDC MIS PZAZZ BOND VIC 415P

CED	BW	WW	YW	M	M&G	SC	FAT	REA	MRB
6.8	2.9	69	110	15	50	1.3	0.015	0.90	0.27
SCF	CEM	MCW	UDR	CW	BMI\$	CHBS	Act. BW	Adj. 205	205 Ratio
20.5	7.9	126	1.4	89	32	38	90	791	111

Top 1% for WW, YW, REA, BMI, CHB; Top 5% for cow fertility, CEM, teat & udder.



E84

Ty LOT 7 • TRICKYS X51-404 E56

REG. #: P43852664 • DOB: 3/22/2017 • POLLED

KCF BENNETT REVOLUTION X51
 MSU TCF REVOLUTION 4R
 FELTONS LEGEND 242
 MSU TCF RACHAEL ET 54N
 EFBEEF SCHU-LAR PROFICIENT N093
 KCF MISS PROFICIENT U201
 KCF MISS 774 L82

R MISS ON TARGET 404
 R MISS RIBSTONE 459
 R MISS RIBSTONE 459
 SCHU-LAR ON TARGET 22S
 HYALITE TS LASS 310
 BN RIBSTONE 501
 R MISS DOMINO 994

CED	BW	WW	YW	M	M&G	SC	FAT	REA	MRB
4.2	4.5	67	108	23	57	1.3	0.025	0.81	0.25
SCF	CEM	MCW	UDR	CW	BMI\$	CHBS	Act. BW	Adj. 205	205 Ratio
21.0	8.2	105	1.4	89	33	37	88	745	104

Top 1% for REA, BMI, CHB; Top 3% for WW, YW.



E56

Ty LOT 8 • TRICKYS X51 BOY 1823 E86

REG. #: P43852682 • DOB: 4/4/2017 • POLLED

KCF BENNETT REVOLUTION X51
 MSU TCF REVOLUTION 4R
 FELTONS LEGEND 242
 MSU TCF RACHAEL ET 54N
 EFBEEF SCHU-LAR PROFICIENT N093
 KCF MISS PROFICIENT U201
 KCF MISS 774 L82

RV LADY OF FELTON 1823
 K&B RED FELTON 8031U
 K&B MS SILVER ADVANCE 6026S
 RV STOCKER 6662
 RV MS NEW DIMEN 3523
 RV STOCKER LADY 8523

CED	BW	WW	YW	M	M&G	SC	FAT	REA	MRB
2.7	3.4	63	107	24	56	1.3	0.005	0.93	0.23
SCF	CEM	MCW	UDR	CW	BMI\$	CHBS	Act. BW	Adj. 205	205 Ratio
19.2	2.7	130	1.3	88	31	39	90	791	111

Top 5% for WW, YW, REA, BMI, CHB. Dam has 4@119 WW, 3 @117 YW, 3 REA 106.



E86

SALE BULLS

Ty LOT 9 • TRICKYS REV W37-4R E26

REG. #: P43827666 • DOB: 3/18/2017 • POLLED

FELTONS LEGEND 242
MSU TCF REVOLUTION 4R
MSU TCF RACHAEL ET 54N

FELTONS DOMINO 774
FELTONS G15
REMITALL ONLINE 122L
HH MISS ADV 786G 1ET

TRICKY'S BOY T703 LD 428P
TRICKYS GIRL 5031 T703 W37
RV MS BOULDER 5031

TRICKY'S BOY 501R 218M
DDC MIS WRANGLER 19D LDR 428P
TH 57G BOULDER 20L
RV DYNASTY 2031

CED	BW	WW	YW	M	M&G	SC	FAT	REA	MRB
0.9	4.7	65	106	19	51	1.0	0.015	0.78	0.09
SCF	CEM	MCW	UDR	CW	BMI\$	CHBS	Act. BW	Adj. 205	205 Ratio
17.4	4.0	109	1.3	88	28	37	90	762	107

Top 4% for WW, YW; Top 1% for REA, CHB; Top 10% Marb., BMI. Dam 6 REA @111.



E26

Ty LOT 10 • TRICKYS X51-W04 E17

REG. #: P43852478 • DOB: 3/15/2017 • POLLED

MSU TCF REVOLUTION 4R
KCF BENNETT REVOLUTION X51
KCF MISS PROFICIENT U201

FELTONS LEGEND 242
MSU TCF RACHAEL ET 54N
EFBEEF SCHU-LAR PROFICIENT N093
KCF MISS 774 L82

BAR JZ NAPOLEON 958T
TRICKYS MH3 6322-NAPO-W04
RV CENTURION LASS 6322

BAR JZ KIRBY 638L
BAR JZ PANDORA 577N
HH CENTURION P441
RV ROCKETTE 3022

CED	BW	WW	YW	M	M&G	SC	FAT	REA	MRB
2.9	4.0	66	105	18	50	1.0	0.015	0.89	0.29
SCF	CEM	MCW	UDR	CW	BMI\$	CHBS	Act. BW	Adj. 205	205 Ratio
19.6	6.5	114	1.4	93	32	40	92	747	105

Top 1% for BMI, CHB, REA; Top 5% for WW, teat, udder, Marb.



E17

Ty LOT 11 • TRICKYS BOY X51-Z54 E59

REG. #: P43852665 • DOB: 3/22/2017 • POLLED

KCF BENNETT 3008 M326
NJW 73S M326 TRUST 100W ET
NJW P606 72N DAYDREAM 73S

RRH MR FELT 3008
KCF MISS 459 F284
PW VICTOR BOOMER P606
NJW 94J DEW 72N

BAR JZ NAPOLEON 958T
TRICKYS NAPI U10-958T Z54
TRICKY'S LENGENDRESS 631S U10

BAR JZ KIRBY 638L
BAR JZ PANDORA 577N
FELTONS LEGEND 242
TRICKY'S GIRL S631 407P 17A

CED	BW	WW	YW	M	M&G	SC	FAT	REA	MRB
-1.6	3.6	62	105	30	61	1.2	-0.005	0.80	0.12
SCF	CEM	MCW	UDR	CW	BMI\$	CHBS	Act. BW	Adj. 205	205 Ratio
17.8	5.4	133	1.3	88	30	39	85	721	112

Top 1% for REA, BMI, CHB; Top 4% for YW; Top 10% for WW.



E59

Ty LOT 12 • TRICKYS MH3 TRUS C54-100W E81

REG. #: P43831204 • DOB: 3/29/2017 • POLLED

NJW 73S M326 TRUST 100W ET
TRICKYS TRUST X29-100W B36
TRICKYS GIRL 741-948T X29

KCF BENNETT 3008 M326
NJW P606 72N DAYDREAM 73S
BAR JZ NAPOLEON 958T
TRICKY'S GIRL 741 499 371R

MSU TCF REVOLUTION 4R
TRICKYSNAPI T701-948T Y41

FELTONS LEGEND 242
MSU TCF RACHAEL ET 54N
BAR JZ NAPOLEON 958T
TRICKY'S GIRL T701 310N

CED	BW	WW	YW	M	M&G	SC	FAT	REA	MRB
-0.6	4.2	64	105	25	57	0.9	0.015	0.81	0.20
SCF	CEM	MCW	UDR	CW	BMI\$	CHBS	Act. BW	Adj. 205	205 Ratio
17.7	5.4	126	1.4	88	29	38	85	809	113

Top 1% for CHB; Top 5% for WW, YW, udder.



E81

SALE BULLS

Ty LOT 13 • TRICKYS SHEYENNE C39-3X E10

REG. #: P43774203 • DOB: 3/3/2017 • POLLED

TH 49U 719T SHEYENNE 3X TH 122 71I VICTOR 719T DRF JWR PRINCE VICTOR 71I
 TH 23S 103R DUCHESS 49U KBCR 19D DOMINETTE 122
 TH 75J 44M LEGACY 103R
 TH 53P W39 DUCHESS 23S

TTRICKYS REVA W16-4R C39 MSU TCF REVOLUTION 4R FELTONS LEGEND 242
 TRICKYS116-419-958T-W16 MSU TCF RACHAEL ET 54N
 BAR JZ NAPOLEON 958T
 DDC MIS PIN DECATH 419P

CED	BW	WW	YW	M	M&G	SC	FAT	REA	MRB
7.8	1.7	67	103	21	54	1.1	0.005	0.59	0.27
SCF	CEM	MCW	UDR	CW	BMI\$	CHBS	Act. BW	Adj. 205	205 Ratio
16.8	3.9	98	1.3	77	27	34	80	714	100

Top 5% for WW, YW, REA, Marb., CHB.



E10

Ty LOT 14 • TRICKYS RED C66-B13

REG. #: P43827668 • DOB: 3/18/2017 • POLLED

TRICKY'S RED BULL Z04-200Z B13 CHURCHILL RED BULL 200Z CHURCHILL SENSATION 028X
 TRICKYSNAPI 988-958T Z04 CHURCHILL LADY 002X ET
 BAR JZ NAPOLEON 958T
 R MISS ONLINE 988

TRICKYS GUNETTE Z10-308A C66 BAR JZ GUNNER 308A HYALITE ON TARGET 936
 TRICKYS VICKY X30-719T Z10 BAR JZ RENE 872W
 TH 122 71I VICTOR 719T
 TRICKYS GIRL 6012-948T X30

CED	BW	WW	YW	M	M&G	SC	FAT	REA	MRB
2.0	4.0	64	103	34	66	1.6	-0.005	0.67	0.12
SCF	CEM	MCW	UDR	CW	BMI\$	CHBS	Act. BW	Adj. 205	205 Ratio
16.3	5.1	109	1.3	90	27	38	90	880	123

Top 1% for REA, CHB; Top 5% for WW, YW, BMI, udder.



E28

Ty LOT 15 • TRICKYS BOY X51-X37 E60

REG. #: P43852666 • DOB: 3/26/2017 • POLLED

KCF BENNETT REVOLUTION X51 MSU TCF REVOLUTION 4R FELTONS LEGEND 242
 KCF MISS PROFICIENT U201 MSU TCF RACHAEL ET 54N
 EFBEF SCHU-LAR PROFICIENT N093
 KCF MISS 774 L82

TRICKYSGIRL U45-371R X37 BAR JZ EXECUTOR 371R BAR JZ KIRBY 638L
 TRICKY'S FANCY GIRL U45 BAR JZ 56E LADY 869J
 TRICKY'S BOY 501R 218M
 DDC MS BOND 141A 001K

CED	BW	WW	YW	M	M&G	SC	FAT	REA	MRB
2.7	3.1	65	103	15	48	1.1	-0.005	0.98	0.23
SCF	CEM	MCW	UDR	CW	BMI\$	CHBS	Act. BW	Adj. 205	205 Ratio
17.2	5.3	115	1.4	95	30	41	86	753	106

Top 1% for REA, CHB; Top 4% for WW, YW, BMI. Dam has 6@105 WW, 5@107 YW, REA.



E60

Ty LOT 16 • TRICKYS TRUST B38-100W E67

REG. #: P43852672 • DOB: 3/24/2017 • POLLED

NJW 73S M326 TRUST 100W ET KCF BENNETT 3008 M326 RRH MR FELT 3008
 NJW P606 72N DAYDREAM 73S KCF MISS 459 F284
 PW VICTOR BOOMER P606
 NJW 94J DEW 72N

TRICKYS REVA W28-4R B38 MSU TCF REVOLUTION 4R FELTONS LEGEND 242
 TRICKYSGIRL 3193-T703;W28 MSU TCF RACHAEL ET 54N
 TRICKY'S BOY T703 LD 428P
 R MISS ADVANCE 3193

CED	BW	WW	YW	M	M&G	SC	FAT	REA	MRB
-1.0	3.3	58	102	27	56	1.2	0.005	0.66	0.25
SCF	CEM	MCW	UDR	CW	BMI\$	CHBS	Act. BW	Adj. 205	205 Ratio
18.7	4.7	132	1.3	77	30	37	87	714	100

Top 1% for CHB; Top 3% for WW, YW, REA; Top 10% for cow fertility; Top 15% for teat, udder.



E67

SALE BULLS

Ty LOT 17 • TRICKYSTRUS B47-B36 E97

REG. #: P43831210 • DOB: 4/17/2017 • POLLED

NJW 73S M326 TRUST 100W ET
TRICKYS TRUST X29-100W B36
 TRICKYS GIRL 741-948T X29

KCF BENNETT 3008 M326
 NJW P606 72N DAYDREAM 73S
 BAR JZ NAPOLEON 958T
 TRICKY'S GIRL 741 499 371R

MSU TCF REVOLUTION 4R
TRICKYS REVA X03-4R B47
 TRICKYSGIRL808-242-X03

FELTONS LEGEND 242
 MSU TCF RACHAEL ET 54N
 FELTONS LEGEND 242
 LHF LUCY 808

CED	BW	WW	YW	M	M&G	SC	FAT	REA	MRB
-1.1	3.6	61	102	27	58	1.0	0.015	0.84	0.15
SCF	CEM	MCW	UDR	CW	BMIS	CHBS	Act. BW	Adj. 205	205 Ratio
18.7	2.6	116	1.4	83	30	35	83	727	112

Top 3% for BMI, CHB; Top 4% for teat and udder; Top 10% for WW, YW.



E97

Ty LOT 18 • TRICKYS TRUST Z02-100W E64

REG. #: 43852669 • DOB: 3/23/2017 • HORNED

KCF BENNETT 3008 M326
NJW 73S M326 TRUST 100W ET
 NJW P606 72N DAYDREAM 73S

RRH MR FELT 3008
 KCF MISS 459 F284
 PW VICTOR BOOMER P606
 NJW 94J DEW 72N

BAR JZ NAPOLEON 958T
TRICKYS NAPI U29-958T Z02
 TRICKY'S 405P 33A U29

BAR JZ KIRBY 638L
 BAR JZ PANDORA 577N
 DDC MR BOND LINEDRIVE 424P
 DDC MIS BOND DECATH 405P

CED	BW	WW	YW	M	M&G	SC	FAT	REA	MRB
-1.5	3.4	58	101	25	54	1.1	-0.015	0.69	0.15
SCF	CEM	MCW	UDR	CW	BMIS	CHBS	Act. BW	Adj. 205	205 Ratio
16.1	6.0	121	1.3	84	28	39	90	816	107

Top 5% for WW, YW; Top 1% for REA, CHB.



E64

Ty LOT 19 • TRICKYS TRUST A03-100W E82

REG. #: P43874812 • DOB: 3/31/2017 • POLLED

KCF BENNETT 3008 M326
NJW 73S M326 TRUST 100W ET
 NJW P606 72N DAYDREAM 73S

RRH MR FELT 3008
 KCF MISS 459 F284
 PW VICTOR BOOMER P606
 NJW 94J DEW 72N

PF COOPER 9036
TRICKYS REVA W12-4R A03
 TRICKSNAP0437P-958T;W12

CMR TF 242 GARRETT 430
 PF MISS HUNTER 7036
 BAR JZ NAPOLEON 958T
 DDC MIS VIC BOND 437P

CED	BW	WW	YW	M	M&G	SC	FAT	REA	MRB
-0.3	3.2	59	101	29	59	1.3	-0.035	0.68	0.08
SCF	CEM	MCW	UDR	CW	BMIS	CHBS	Act. BW	Adj. 205	205 Ratio
16.5	5.2	125	1.3	80	28	38	90	848	115

Top 1% for CHB; Top 5% for YW, REA, BMI. Red-eyed and red-necked.



E82

Ty LOT 20 • TRICKYS TRUST A46-100W E36

REG. #: P43852650 • DOB: 3/19/2017 • POLLED

KCF BENNETT 3008 M326
NJW 73S M326 TRUST 100W ET
 NJW P606 72N DAYDREAM 73S

RRH MR FELT 3008
 KCF MISS 459 F284
 PW VICTOR BOOMER P606
 NJW 94J DEW 72N

BAR JZ NAPOLEON 958T
TRICKYS NAPI U47-958T A46
 TRICKY'S GIRL 437P 371R U47

BAR JZ KIRBY 638L
 BAR JZ PANDORA 577N
 BAR JZ EXECUTOR 371R
 DDC MIS VIC BOND 437P

CED	BW	WW	YW	M	M&G	SC	FAT	REA	MRB
-1.8	3.9	59	100	28	57	1.1	-0.035	0.63	0.04
SCF	CEM	MCW	UDR	CW	BMIS	CHBS	Act. BW	Adj. 205	205 Ratio
17.0	6.4	125	1.3	81	28	39	95	745	104

Top 5% for REA; Top 1% for CHB; Top 10% for Milk, BMI.



E36

SALE BULLS

Ty LOT 21 • TRICKYS TRUST B23-100W E37

REG. #: P43852651 • DOB: 3/20/2017 • POLLED

KCF BENNETT 3008 M326
 NJW 73S M326 TRUST 100W ET
 RR MR FELT 3008
 KCF MISS 459 F284
 PW VICTOR BOOMER P606
 NJW P606 72N DAYDREAM 73S
 NJW 94J DEW 72N

MSU TCF REVOLUTION 4R
 TRICKYS REVOLUTION U33-4R B23
 TRICKY'S GIRL 371R U33
 FELTONS LEGEND 242
 MSU TCF RACHAEL ET 54N
 BAR JZ EXECUTOR 371R
 R MISS PAGE 1436

CED	BW	WW	YW	M	M&G	SC	FAT	REA	MRB
-2.5	3.9	58	100	26	55	1.1	-0.005	0.61	0.22
SCF	CEM	MCW	UDR	CW	BMI\$	CHBS	Act. BW	Adj. 205	205 Ratio
19.1	4.3	126	1.3	76	31	37	91	680	94

Top 1% for CHB; Top 3% for BMI; Top 5% for YW, REA; Top 20% for WW, Milk, Marb.



E37

Ty LOT 22 • TRICKYS X51-Y15 E48

REG. #: P43852659 • DOB: 3/21/2017 • POLLED

MSU TCF REVOLUTION 4R
 KCF BENNETT REVOLUTION X51
 KCF MISS PROFICIENT U201
 FELTONS LEGEND 242
 MSU TCF RACHAEL ET 54N
 EFBEEF SCHU-LAR PROFICIENT N093
 KCF MISS 774 L82

TH 122 71I VICTOR 719T
 TRICKYS VICKY W52-719T Y15
 TRICKYS GIRL 45P-371R/W52
 DRF JWR PRINCE VICTOR 71I
 KBCR 19D DOMINETTE 122
 BAR JZ EXECUTOR 371R
 ERNST MS COW MAKER P45

CED	BW	WW	YW	M	M&G	SC	FAT	REA	MRB
2.0	3.6	66	99	17	50	1.0	-0.005	0.92	0.14
SCF	CEM	MCW	UDR	CW	BMI\$	CHBS	Act. BW	Adj. 205	205 Ratio
21.0	1.9	100	1.4	88	33	39	92	741	104

Top 1% for REA, BMI, CHB; Top 3% for WW, cow fertility; Top 10% for YW.



E48

Ty LOT 23 • TRICKYS SHEYENNE C71-3X E07

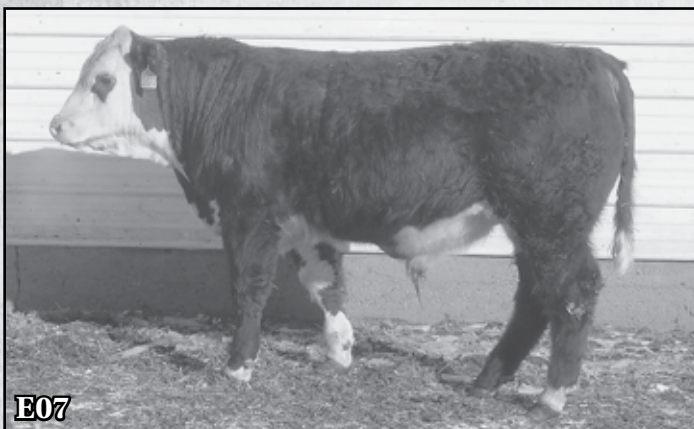
REG. #: P43774199 • DOB: 2/26/2017 • POLLED

TH 49U 719T SHEYENNE 3X
 TH 122 71I VICTOR 719T
 TH 23S 103R DUCHESS 49U
 DRF JWR PRINCE VICTOR 71I
 KBCR 19D DOMINETTE 122
 TH 75J 44M LEGACY 103R
 TH 53P W39 DUCHESS 23S

BAR JZ GUNNER 308A
 TRICKYS GUNNETTE X37-308A C71
 TRICKYS GIRL U45-371R X37
 HYALITE ON TARGET 936
 BAR JZ RENE 872W
 BAR JZ EXECUTOR 371R
 TRICKY'S FANCY GIRL U45

CED	BW	WW	YW	M	M&G	SC	FAT	REA	MRB
4.7	1.3	64	98	25	57	1.3	0.005	0.49	0.14
SCF	CEM	MCW	UDR	CW	BMI\$	CHBS	Act. BW	Adj. 205	205 Ratio
14.7	1.4	99	1.3	76	24	33	83	774	108

Top 10% for WW, YW, CHB; Top 15% for BMI, REA.



E07

Ty LOT 24 • TRICKYS REV Y41-4R E22

REG. #: P43827663 • DOB: 3/17/2017 • POLLED

MSU TCF REVOLUTION 4R
 FELTONS LEGEND 242
 MSU TCF RACHAEL ET 54N
 FELTONS DOMINO 774
 FELTONS G15
 REMITALL ONLINE 122L
 HH MISS ADV 786G 1ET

BAR JZ NAPOLEON 958T
 TRICKYSNAPI T701-948T Y41
 TRICKY'S GIRL T701 310N
 BAR JZ KIRBY 638L
 BAR JZ PANDORA 577N
 TRICKY'S BOY 501R 218M
 DDC MIS 19D PZAZZ 4S 310N

CED	BW	WW	YW	M	M&G	SC	FAT	REA	MRB
0.9	4.1	61	98	20	50	0.9	0.005	0.63	0.09
SCF	CEM	MCW	UDR	CW	BMI\$	CHBS	Act. BW	Adj. 205	205 Ratio
18.1	5.5	98	1.4	78	28	34	94	710	100

Top 3% for REA; Top 4% for teat, udder, CHB, BMI; Top 10% for WW, YW.

Tips to make fast genetic progress:

1. Choose highly heritable traits.
2. Use a sire that is high in those traits.
3. Don't try to change too many traits at one time.
(WW, YW and Scrotal for example)

REA & Growth go well together.
 BW or calving ease & Scrotal & Marbling fit each other too.

(continued on page 11)

SALE BULLS

Ty LOT 25 • TRICKYS SHEYENNE C21-3X E04

REG. #: P43774198 • DOB: 2/25/2017 • POLLED

TH 122 71I VICTOR 719T DRF JWR PRINCE VICTOR 71I
 TH 49U 719T SHEYENNE 3X KBCR 19D DOMINETTE 122
 TH 23S 103R DUCHESS 49U TH 75J 44M LEGACY 103R
 TH 53P W39 DUCHESS 23S

NJW 73S W18 HOMEGROWN 8Y ET SHF WONDER M326 W18 ET
 TRICKYS HOMEBOY Y06-8Y C21 NJW P606 72N DAYDREAM 73S
 TRICKYS REVOLUTION 8210-4R Y06 MSU TCF REVOLUTION 4R
 RV MISS STOCKER 8210

CED	BW	WW	YW	M	M&G	SC	FAT	REA	MRB
8.2	1.1	65	97	29	62	1.2	0.065	0.53	0.20
SCF	CEM	MCW	UDR	CW	BMI\$	CHB\$	Act. BW	Adj. 205	205 Ratio
14.9	2.7	102	1.2	70	24	29	80	802	112

Top 5% for WW; Top 10% for CED; Top 15% for YW, Milk, Marb, BW.



E04

Ty LOT 26 • TRICKYS REV 3949-4R E18

REG. #: P43827660 • DOB: 3/15/2017 • POLLED

MSU TCF REVOLUTION 4R FELTONS LEGEND 242 FELTONS DOMINO 774
 MSU TCF RACHAEL ET 54N FELTONS G15
 REMITALL ONLINE 122L
 HH MISS ADV 786G 1ET

RV MS CHANCELOR 3949 K&B CHANCELOR 0015X K&B HEADLINE 6010S
 K&B SULTANA 8082U
 LAGRAN RELOAD 80P ET
 RV LOADED LADY 7949 RV TANA 2049

CED	BW	WW	YW	M	M&G	SC	FAT	REA	MRB
-3.8	4.9	57	94	17	46	0.9	0.025	0.58	0.10
SCF	CEM	MCW	UDR	CW	BMI\$	CHB\$	Act. BW	Adj. 205	205 Ratio
20.1	-0.9	82	1.3	72	30	33	96	644	90

Top 3% for BMI, CHB; Top 15% for YW, cow fertility, teat, udder, REA.



E18

Ty LOT 27 • TRICKYS TRUSTY B65-B36 E100

REG. #: P43850090 • DOB: 4/20/2017 • POLLED

TRICKYS TRUST X29-100W B36 NJW 73S M326 TRUST 100W ET
 TRICKYS GIRL 741-948T X29 KCF BENNETT 3008 M326
 NJW P606 72N DAYDREAM 73S
 BAR JZ NAPOLEON 958T
 TRICKY'S GIRL 741 499 371R

TRICKYS VISA Z24-4242 B65 R VISION 4242 SHF VISION R117 U38
 R MISS REVOLUTION 90
 MSU TCF REVOLUTION 4R
 S&S MISS LAMP 474S

CED	BW	WW	YW	M	M&G	SC	FAT	REA	MRB
0.9	2.7	55	94	29	56	0.9	0.015	0.73	0.23
SCF	CEM	MCW	UDR	CW	BMI\$	CHB\$	Act. BW	Adj. 205	205 Ratio
19.3	4.5	103	1.3	77	30	35	83	712	100

Top 2% for REA; Top 3% for BMI, CHB; Top 15% for YW, Marb; Top 10% for cow fertility, teat, udder.



E100

Ty LOT 28 • TRICKYS X51-Y05 E47

REG. #: P43852658 • DOB: 3/21/2017 • POLLED

KCF BENNETT REVOLUTION X51 MSU TCF REVOLUTION 4R FELTONS LEGEND 242
 KCF MISS PROFICIENT U201 MSU TCF RACHAEL ET 54N
 EFBEF SCHU-LAR PROFICIENT N093
 KCF MISS 774 L82

TRICKYS VICKY W17-719T Y05 TH 122 71I VICTOR 719T DRF JWR PRINCE VICTOR 71I
 TRICKYSGIRLS609-T703;W17 KBCR 19D DOMINETTE 122
 TRICKY'S BOY T703 LD 428P
 TRICKY STK DECK S609 P45

CED	BW	WW	YW	M	M&G	SC	FAT	REA	MRB
6.3	1.7	58	93	18	47	1.1	0.015	0.78	0.21
SCF	CEM	MCW	UDR	CW	BMI\$	CHB\$	Act. BW	Adj. 205	205 Ratio
20.7	4.2	95	1.4	77	32	36	86	661	103

Top 1% for REA, CHB; Top 4% for cow fertility, BMI, teat, udder; Top 20% for BW, WW, YW. Will produce great daughters. Very maternal.



E47

SALE BULLS

Ty LOT 29 • TRICKYS REVO Y03-4R E94

REG. #: P43831209 • DOB: 4/5/2017 • POLLED

MSU TCF REVOLUTION 4R
 FELTONS LEGEND 242
 MSU TCF RACHAEL ET 54N
 TH 122 71I VICTOR 719T
 TRICKYSVICKY W04-719T Y03
 TRICKYS MH3 6322-NAPO-W04
 FELTONS DOMINO 774
 FELTONS G15
 REMITALL ONLINE 122L
 HH MISS ADV 786G 1ET
 DRF JWR PRINCE VICTOR 71I
 KBCR 19D DOMINETTE 122
 BAR JZ NAPOLEON 958T
 RV CENTURION LASS 6322

CED	BW	WW	YW	M	M&G	SC	FAT	REA	MRB
5.6	1.2	59	91	24	53	1.0	0.035	0.66	0.20
SCF	CEM	MCW	UDR	CW	BMI\$	CHBS	Act. BW	Adj. 205	205 Ratio
22.3	4.0	90	1.3	75	33	32	86	704	99

Very maternal with good growth, teat, udder, CEM, BMI, CHB, REA & Marb.



Ty LOT 30 • TRICKYS REV A52-4R E43

REG. #: P43828465 • DOB: 3/20/2017 • POLLED

MSU TCF REVOLUTION 4R
 FELTONS LEGEND 242
 MSU TCF RACHAEL ET 54N
 BAR JZ NAPOLEON 958T
 TRICKYS NAPI X29-958T A52
 TRICKYS GIRL 741-948T X29
 FELTONS DOMINO 774
 FELTONS G15
 REMITALL ONLINE 122L
 HH MISS ADV 786G 1ET
 BAR JZ KIRBY 638L
 BAR JZ PANDORA 577N
 BAR JZ NAPOLEON 958T
 TRICKY'S GIRL 741 499 371R

CED	BW	WW	YW	M	M&G	SC	FAT	REA	MRB
5.7	1.4	55	90	23	50	0.9	0.015	0.73	0.14
SCF	CEM	MCW	UDR	CW	BMI\$	CHBS	Act. BW	Adj. 205	205 Ratio
20.5	7.8	105	1.4	86	31	37	80	719	101

Cow sire. Top 1% for REA, CHB, BMI; Top 4% for cow fertility, CEM, teat & udder. Low birth weight with moderate growth and milk.



Ty LOT 31 • TRICKYS REV 1523-4R E19

REG. #: P43827661 • DOB: 3/15/2017 • POLLED

MSU TCF REVOLUTION 4R
 FELTONS LEGEND 242
 MSU TCF RACHAEL ET 54N
 RV LADY OF WELLS 1523
 SHF WELLS 2013 W72
 RV MS NEW DIMEN 3523
 FELTONS DOMINO 774
 FELTONS G15
 REMITALL ONLINE 122L
 HH MISS ADV 786G 1ET
 R PUCKSTER 2013
 SHF PROGRESS T148
 RJH NEW DIMENSION K40
 RV INGRID 9523

CED	BW	WW	YW	M	M&G	SC	FAT	REA	MRB
2.3	2.2	55	89	19	47	1.2	0.025	0.29	0.22
SCF	CEM	MCW	UDR	CW	BMI\$	CHBS	Act. BW	Adj. 205	205 Ratio
20.2	2.7	93	1.2	58	29	27	90	644	90

Top 1/3 growth, high maternal, cow fertility, BMI.



Ty LOT 32 • TRICKYS RED C24-B13 E16

REG. #: P43827659 • DOB: 3/14/2017 • POLLED

TRICKY'S RED BULL Z04-200Z B13
 CHURCHILL RED BULL 200Z
 TRICKYSNAPI 988-958T Z04
 BAR JZ GUNNER 308A
 TRICKYS GUNNERETTE Y15-308AC24
 TRICKYS VICKY W52-719T Y15
 CHURCHILL SENSATION 028X
 CHURCHILL LADY 002X ET
 BAR JZ NAPOLEON 958T
 R MISS ONLINE 988
 HYALITE ON TARGET 936
 BAR JZ RENE 872W
 TH 122 71I VICTOR 719T
 TRICKYS GIRL 45P-371R/W52

CED	BW	WW	YW	M	M&G	SC	FAT	REA	MRB
-3.0	4.3	52	88	30	56	1.3	-0.025	0.45	0.03
SCF	CEM	MCW	UDR	CW	BMI\$	CHBS	Act. BW	Adj. 205	205 Ratio
16.3	0.9	86	1.3	75	26	36	92	755	106

Top 1/3 for YW, REA; Top 20% for BMI, CHB; moderate growth, good teat, udder; high CHB and REA.



SALE BULLS

Ty LOT 33 • TRICKYSRED EYE X51-U27 E31 REG. #: P43852647 • DOB: 3/18/2017 • POLLED

MSU TCF REVOLUTION 4R
KCF BENNETT REVOLUTION X51
KCF MISS PROFICIENT U201

FELTONS LEGEND 242
MSU TCF RACHAEL ET 54N
EFBEEF SCHU-LAR PROFICIENT N093
KCF MISS 774 L82

GRANDVIEW 7OAKS SONORA 145R
TRICKY'S SONORITA 415P U27
DDC MIS PZAZZ BOND VIC 415P

REMITALL ONLINE 122L
DJB 46B BETH 1L
DDC VIC 843H 029K
DDC MIS BOND PZAZZ 804H

CED	BW	WW	YW	M	M&G	SC	FAT	REA	MRB
3.6	3.0	55	88	17	44	1.0	-0.005	0.85	0.33
SCF	CEM	MCW	UDR	CW	BMI\$	CHBS	Act. BW	Adj. 205	205 Ratio
18.4	7.7	98	1.4	84	31	41	83	700	100

Upper 1/3 for WW, YW; Top 2% for BMI, CHB. Thick, muscular, red-eyed, red-necked, high cow fertility, CEM make him a cow sire.



E31

Ty LOT 34 • TRICKYS TRUS B07-B36 E78 REG. #: P43853278 • DOB: 3/28/2017 • POLLED

NJW 73S M326 TRUST 100W ET
TRICKYS TRUST X29-100W B36
TRICKYS GIRL 741-948T X29

KCF BENNETT 3008 M326
NJW P606 72N DAYDREAM 73S
BAR JZ NAPOLEON 958T
TRICKY'S GIRL 741 499 371R

CHURCHILL SENSATION 028X
TRICKYS SENA 452-028X B7
R MISS ON TARGET 452

UPS DOMINO 3027
CHURCHILL LADY 7202T ET
HYALITE ON TARGET 936
R MISS NAVIGATE 408

CED	BW	WW	YW	M	M&G	SC	FAT	REA	MRB
3.2	1.7	53	88	31	57	1.1	0.025	0.71	0.23
SCF	CEM	MCW	UDR	CW	BMI\$	CHBS	Act. BW	Adj. 205	205 Ratio
16.1	6.0	97	1.4	82	27	36	82	727	102

Top 25% for WW, YW; Top 10% for REA, CHB.



E78

Ty LOT 35 • TRICKYS TIME B52-743 E33 REG. #: P43827669 • DOB: 3/19/2017 • POLLED

THM DURANGO 4037
CRR ABOUT TIME 743
CRR D03 CASSIE 206

CS BOOMER 29F
THM 7085 VICTRA 9036
SHF INTERSTATE 20X D03
CRR 475E CASSIE 838

TRICKYSREVOLUTION T731-4R Z29
TRICKYS GIRL Y50-Z29 B52
TRICKYSGIRLW28-958T Y50

MSU TCF REVOLUTION 4R
TRICKY'S DOLL T731 218M
PF COOPER 9036
TRICKYSGIRL 3193-T703;W28

CED	BW	WW	YW	M	M&G	SC	FAT	REA	MRB
0.1	2.7	57	87	21	49	0.9	-0.025	0.45	0.00
SCF	CEM	MCW	UDR	CW	BMI\$	CHBS	Act. BW	Adj. 205	205 Ratio
18.9	-3.6	110	1.3	64	27	27	83	767	107

Top 25% for WW, YW, cow fertility, BMI.

AVG. YW EPD 98
YW EPD RANGE OF 71 TO 126

AVG. REA EPD 0.71
(RANGING FROM 0.29 TO 1.17)

2016 BREED AVERAGE EPDS

CED	BW	WW	YW	M	M&G	SC	FAT	REA	MRB
1.6	3.1	50	81	23	48	0.9	0.007	0.35	0.10
SCF	CEM	MCW	UDR	CW	BMI\$	CHBS			
13.8	1.7	88	1.18	63	22	28			

Ty LOT 36 • TRICKYS RED C80-B13 E79 REG. #: P43831203 • DOB: 3/28/2017 • POLLED

CHURCHILL RED BULL 200Z
TRICKY'S RED BULL Z04-200Z B13
TRICKYSNAPI 988-958T Z04

CHURCHILL SENSATION 028X
CHURCHILL LADY 002X ET
BAR JZ NAPOLEON 958T
R MISS ONLINE 988

BAR JZ GUNNER 308A
TRICKYS GIRL 158W-308A C80
LCG STELLA HI TIME 90Y

HYALITE ON TARGET 936
BAR JZ RENE 872W
DH HIGH TIME 87
LCG STELLA MARSHALL 190U

CED	BW	WW	YW	M	M&G	SC	FAT	REA	MRB
4.0	2.3	51	87	30	56	1.4	-0.005	0.55	0.15
SCF	CEM	MCW	UDR	CW	BMI\$	CHBS	Act. BW	Adj. 205	205 Ratio
15.0	5.4	95	1.2	81	25	36	74	727	102

Top 1/3 for BW, WW, YW; Top 10% for REA, Milk.



E79

SALE BULLS

Ty LOT 37 • TRICKYS TRUS Z10-B36 E92

REG. #: P43831207 • DOB: 4/11/2017 • POLLED

NJW 73S M326 TRUST 100W ET
TRICKYS TRUST X29-100W B36
 TRICKYS GIRL 741-948T X29

KCF BENNETT 3008 M326
 NJW P606 72N DAYDREAM 73S
 BAR JZ NAPOLEON 958T
 TRICKY'S GIRL 741 499 371R

TH 122 71I VICTOR 719T
TRICKYS VICKY X30-719T Z10
 TRICKYS GIRL 6012-948T X30

DRF JWR PRINCE VICTOR 71I
 KBCR 19D DOMINETTE 122
 BAR JZ NAPOLEON 958T
 RV BOULDER LASS 6012

CED	BW	WW	YW	M	M&G	SC	FAT	REA	MRB
1.0	2.3	52	87	28	54	0.9	-0.015	0.71	0.14
SCF	CEM	MCW	UDR	CW	BMI\$	CHBS	Act. BW	Adj. 205	205 Ratio
17.4	2.6	112	1.3	80	29	38	80	604	94

Top 3% for BMI, CHB; Top 15% for teat and udder; Top 1/3 BW, WW, YW.



E92

Ty LOT 38 • TRICKYS TRUS Z60-B36 E93

REG. #: P43831208 • DOB: 4/5/2017 • POLLED

NJW 73S M326 TRUST 100W ET
TRICKYS TRUST X29-100W B36
 TRICKYS GIRL 741-948T X29

KCF BENNETT 3008 M326
 NJW P606 72N DAYDREAM 73S
 BAR JZ NAPOLEON 958T
 TRICKY'S GIRL 741 499 371R

PF COOPER 9036
TRICKYSCOOP X01-9036 Z60
 TRICKYSGIRLY29-7208-4R-X01

CMR TF 242 GARRETT 430
 PF MISS HUNTER 7036
 MSU TCF REVOLUTION 4R
 K&B MS 4197 DOMINO 7208T

CED	BW	WW	YW	M	M&G	SC	FAT	REA	MRB
-0.4	3.6	51	87	26	52	0.9	0.005	0.67	0.17
SCF	CEM	MCW	UDR	CW	BMI\$	CHBS	Act. BW	Adj. 205	205 Ratio
15.9	2.7	112	1.4	75	27	35	90	679	95

Long and thick ended. Top 4%.



E93

Ty LOT 39 • TRICKYS SHETENNE C64-3X E14

REG. #: P43774207 • DOB: 3/6/2017 • POLLED

TH 122 71I VICTOR 719T
TH 49U 719T SHEYENNE 3X
 TH 23S 103R DUCHESS 49U

DRF JWR PRINCE VICTOR 71I
 KBCR 19D DOMINETTE 122
 TH 75J 44M LEGACY 103R
 TH 53P W39 DUCHESS 23S

NJW 73S W18 HOMEGROWN 8Y ET
TRICKYS HOMEGIRL Z32-8Y C64
 TRICKYSREVA6568-4 Z32

SHF WONDER M326 W18 ET
 NJW P606 72N DAYDREAM 73S
 MSU TCF REVOLUTION 4R
 TRICKYS GIRL 616-703T X43

CED	BW	WW	YW	M	M&G	SC	FAT	REA	MRB
8.0	0.4	58	86	27	56	1.2	0.025	0.47	0.20
SCF	CEM	MCW	UDR	CW	BMI\$	CHBS	Act. BW	Adj. 205	205 Ratio
14.2	2.8	96	1.2	66	24	30	76	715	100

Calving Ease (upper 5%); Upper 1/3 for growth; Upper 1/4 for BMI, CHB.

Tips to make fast genetic progress:

4. Then settle for average or so in traits that are not so economically important.

Re: fast= big spreads {top 10-15%}
 For example: cow YW of 55 x bull YW of 110 will produce calves that avg. 82 so you moved 27 lbs. in one cross.

Save all heifers above 90% index & sell cows in lower 25%.

Ty LOT 40 • TRICKYS RED C85-B13 E70

REG. #: P43828750 • DOB: 3/24/2017 • POLLED

CHURCHILL RED BULL 200Z
TRICKY'S RED BULL Z04-200Z B13
 TRICKYSNAP1988-958T Z04

CHURCHILL SENSATION 028X
 CHURCHILL LADY 002X ET
 BAR JZ NAPOLEON 958T
 R MISS ONLINE 988

TRICKYS REVOLUTION W37-4R A05
TRICKYS GIRL Y05-A05 C85
 TRICKYS VICKYW17-719T Y05

MSU TCF REVOLUTION 4R
 TRICKYS GIRL 5031 T703 W37
 TH 122 71I VICTOR 719T
 TRICKYSGIRLS609-T703;W17

CED	BW	WW	YW	M	M&G	SC	FAT	REA	MRB
6.5	1.3	52	85	26	52	1.2	0.005	0.57	0.09
SCF	CEM	MCW	UDR	CW	BMI\$	CHBS	Act. BW	Adj. 205	205 Ratio
15.8	5.4	92	1.3	77	26	35	76	732	103

Top CED. Extra calving ease & ribeye, above avg. growth and carcass.



E70

SALE BULLS

Ty LOT 41 • TRICKYS RED C81-B13 E88

REG. #: P43831206 • DOB: 4/4/2017 • POLLED

CHURCHILL RED BULL 200Z CHURCHILL SENSATION 028X
 TRICKY'S RED BULL Z04-200Z B13 CHURCHILL LADY 002X ET
 TRICKYSNAPI 988-958T Z04 BAR JZ NAPOLEON 958T
 R MISS ONLINE 988

BAR JZ GUNNER 308A HYALITE ON TARGET 936
 TRICKYSGIRL Z02-308A C81 BAR JZ RENE 872W
 TRICKYS NAPI U29-958T Z02 BAR JZ NAPOLEON 958T
 TRICKY'S 405P 33A U29

CED	BW	WW	YW	M	M&G	SC	FAT	REA	MRB
6.0	0.7	49	83	29	54	1.4	0.025	0.57	0.16
SCF	CEM	MCW	UDR	CW	BMI\$	CHBS	Act. BW	Adj. 205	205 Ratio
14.9	7.9	96	1.3	85	25	36	66	714	102

Top 2% for CHB; Top 10% for BW, teat, udder.

Ty LOT 43 • TRICKYS E95

SIRE: NLC UPGRADE • DOB: 4/16/2017 • POLLED

Act. BW	Adj. 205
94	760

EXPLANATION OF BREED EPDS

2016 BREED AVERAGE EPDS

CED	BW	WW	YW	M	M&G	SC	FAT	REA	MRB
1.6	3.1	50	81	23	48	0.9	0.007	0.35	0.10
SCF	CEM	MCW	UDR	CW	BMI\$	CHBS			
13.8	1.7	88	1.18	63	22	28			

CALVING EASE DIRECT (CED):

CE EPD is based on calving ease scores and birth weights and is measured on a percentage. CE EPD indicates the influence of the sire on calving ease in females calving at 2 years of age. For example, if sire A has a CE EPD of 6 and sire B has a CE EPD of -2, then you would expect on average if comparably mated, sire A's calves would be born with an 8% more likely chance of being unassisted when compared to sire B's calves.

BIRTH WEIGHT (BW):

BW EPD is an indicator trait for calving ease and is measured in pounds. For example, if sire A has a BW EPD of 3.6 and sire B has a BW EPD of 0.6, then you would expect on average if comparably mated, sire A's calves would come 3 lb. heavier at birth when compared to sire B's calves. Larger BW EPDs usually, but not always, indicate more calving difficulty. The figure in parentheses found after each EPD is an accuracy value or reliability of the EPD.

WEANING WEIGHT (WW):

WW EPD is an estimate of pre-weaning growth that is measured in pounds. For example, if sire A has a WW EPD of 60 and sire B has a WW EPD of 40, then you would expect on average if comparably mated, sire A's calves would weigh 20 lb. heavier at weaning when compared to sire B's calves.

YEARLING WEIGHT (YW):

YW EPD is an estimate of post-weaning growth that is measured in pounds. For example, if sire A has a YW EPD of 100 and sire B has a YW EPD of 70, then you would expect on average if comparably mated, sire A's calves would weigh 30 lb. heavier at a year of age when compared to sire B's calves.

MATERNAL MILK (M):

The milking ability of a sire's daughters is expressed in pounds of calf weaned. It predicts the difference in average weaning weights of sires' daughters' progeny due to milking ability. Daughters of the sire with a +14 MM EPD should produce progeny with 205-day weights averaging 24 lb. more (as a result of greater milk production) than daughters of a bull with a MM EPD of -10 lb.

Ty LOT 42 • TRICKYS SENSATION C13-028X E03

REG. #: P43776028 • DOB: 2/25/2017 • POLLED

UPS DOMINO 3027 CL 1 DOMINO 9126J 1ET
 CHURCHILL SENSATION 028X UPS MISS DIAMOND 1353
 CHURCHILL LADY 7202T ET GH RAMBO 279R
 CL 1 DOMINETTE 301N

TH 49U 719T SHEYENNE 3X TH 122 711 VICTOR 719T
 TRICKYS SHEYETTEA49-3X C13 TH 23S 103R DUCHESS 49U
 TRICKYS NAPI U47-958T A46 BAR JZ NAPOLEON 958T
 TRICKY'S GIRL 437P 371R U47V

CED	BW	WW	YW	M	M&G	SC	FAT	REA	MRB
12.1	-1.0	49	71	34	58	1.2	0.035	0.38	0.20
SCF	CEM	MCW	UDR	CW	BMI\$	CHBS	Act. BW	Adj. 205	205 Ratio
13.9	5.0	47	1.3	64	23	30	75	623	87

Calving Ease and BW upper 1%. High teat, udder EPDs.



(14 minus -10.0 = 24 lb.). This difference in weaning weight is due to total milk production during the entire lactation.

MATERNAL MILK & GROWTH (M&G):

Maternal Milk & Growth reflects what the sire is expected to transmit to his daughters for a combination of growth genetics through weaning and genetics for milking ability. It is an estimate of daughters' progeny weaning weight. A bull with a 29 lb. M&G EPD should sire daughters with progeny weaning weights averaging 19 lb. heavier than progeny of a bull's daughters with a M&G EPD of 10 lb. (29 minus 10 = 19 lb.). It is equal to one-half the sire's weaning weight EPD, plus all of his MM EPD. No accuracy is associated with this since it is simply a mathematical combination of two other EPDs. It is sometimes referred to as "total maternal" or "combined maternal".

SCROTAL CIRCUMFERENCE (SC):

Measured in centimeters and adjusted to 365 days of age, SC EPD is the best estimate of fertility. It is related to the bull's own semen quantity and quality, and is also associated with age at puberty of sons and daughters. Larger SC EPDs suggest younger age at puberty. Yearling sons of a sire with a .7 SC EPD should have yearling scrotal circumference measurements that average 0.7 centimeters (cm) larger than progeny by a bull with an EPD of 0.0 cm. In the Hereford genetic analysis, a multiple-trait model was used for scrotal circumference. Weaning weight was used as a predictor variable to increase the prediction accuracy of SC EPDs. Therefore, an animal with a weaning weight EPD should also have a SC EPD.

SUSTAINED COW FERTILITY (SCF):

The AHA's new Sustained Cow Fertility EPD (SCF) is a prediction of a cow's ability to continue to calve from three years of age through twelve years of age, given she calved as a two-year-old. The EPD is expressed as a deviation in the proportion of the ten-possible calving's to twelve years old expressed as a probability. For example, the daughters of a bull with a 30 EPD would have the genetic potential to have one more calf by age twelve than the daughters from a bull with a 20 EPD. In other words, the daughters from the 30 EPD bull would have a 10% greater probability of having one more calf than the bull with a 20 EPD. This is equivalent to saying that the daughters are 10% more likely to remain in the herd to age 12.

MATERNAL CALVING EASE (CEM):

MCE EPD predicts how easily a sire's daughters will calve at 2 years of age and is measured on a percentage. For example, if sire A has a MCE EPD of 7 and sire B has a CE EPD of -3, then you would expect on average if comparably mated, sire A's daughters would calve with a 10% more likely chance of being unassisted when compared to sire B's daughters.

MATURE COW WEIGHT (MCW):

The MCW EPD was designed to help breeders select sires that will either increase or decrease mature size of cows in the herd. The trait was developed after years of cow weight data collection and the EPD relates directly to the maintenance requirements of a cow herd. An example of how the MCW EPD allows breeders to compare sires: If sire A has a MCW EPD of 100 and sire B has an EPD of 85, then you would expect the females of sire A, if mated to similar cows, to be 15 lb. heavier at mature size.

UDDER SUSPENSION (UDR):

Scores range from 9 (very tight) to 1 (very pendulous) and represent assessments of udder support. Weak udder suspension results in pendulous udders that make it difficult for a calf to nurse. Weak suspension in the udder indicates a lack of support in the ligament that ties the udder to the cow's body wall. Over time, weakness in this ligament will allow the udder to hang down too far from the body and may subject the udder to serious problems and increased potential for injury.

UDDR EPDs are reported on the scoring scale. Differences in sire EPDs predict the difference expected in the sires' daughters' udder characteristics when managed in the same environment. For example, if sire A has a UDDR EPD of 0.4, and sire B has a UDDR EPD of -0.1, the difference in the values is 0.5, or one-half of a score. If daughters of sires A and B are raised and managed in the same environment, you would expect half a score better udder suspension in daughters of sire A, compared to sire B.

CARCASS WEIGHT (CW):

Carcass weight is a beneficial trait when considering the impact that pounds have relative to end product value. At the same age constant endpoint, sires with higher values for carcass weight will add more pounds of hot carcass weight compared to sires with lower values for carcass weight. For example, if sire A has a CW EPD of 84 and sire B has a CW EPD 64, then you would expect the progeny of sire A, if harvested at the same age constant endpoint, to have a 20-lb. advantage in terms of hot carcass weight.

RIB FAT (FAT):

The FAT EPD reflects differences in adjusted 365-day, 12th-rib fat thickness based on carcass measurements of harvested cattle. Sires with low, or negative FAT EPDs are expected to produce leaner progeny than sires with higher EPDs. Ultrasound measures are also incorporated into this trait and have been shown to be highly correlated with the performance of slaughter progeny. All data is expressed on a carcass scale.

RIBEYE AREA (REA):

REA EPDs reflect differences in an adjusted 365-day ribeye area measurement based on carcass measurements of harvested cattle. Sires with relatively higher REA EPDs are expected to produce better-muscled and higher percentage yielding slaughter progeny than will sires with lower REA EPDs. Ultrasound measurements are also incorporated into this trait and have been shown to be highly correlated with the performance of slaughter progeny. All data is expressed on a carcass scale.

MARBLING (MRB):

MARB EPDs reflect differences in an adjusted 365-day marbling score (intramuscular fat, [IMF]) based on carcass measurements of harvested cattle. Breeding cattle with higher MARB EPDs should produce slaughter progeny with a higher degree of IMF and therefore higher quality grades. Ultrasound measurements are also incorporated into this trait and have been shown to be highly correlated with the performance of slaughter progeny. All data is expressed on a carcass scale.

BALDY MATERNAL INDEX (BMI\$):

The Baldy Maternal Index is a maternally focused index that is based on a production system that uses Hereford x Angus cross cows. Progeny of these cows are directed towards Certified Hereford Beef. This index has significant weight on Sustained Cow Fertility, which predicts fertility and longevity of females. There is a slightly positive weight on Weaning Weight, Mature Cow Weight and Milk which accounts for enough growth but ensures females do not increase inputs. There is some negative emphasis on Dry Matter Intake, but a positive weighting on Carcass Weight which is anticipated to provide profitability from finishing of non-replacement females and castrated males. Marbling and Ribeye Area are also positively weighted to keep the harvested progeny successful for CHB. This index is geared to identify Hereford bulls that will be profitable when used in a rotational cross with mature commercial Angus cows.

CERTIFIED HEREFORD BEEF (CHB\$):

The Certified Hereford Beef Index is a terminal sire index that is built on a production system where Hereford bulls are mated to mature commercial Angus cows and all progeny will be targeted for Certified Hereford Beef after the finishing phase. This index has significant weight on Carcass Weight to ensure profit on the rail. As well there is a positive weighting for Average Daily Gain along with a negative weighting on Dry Matter Intake to ensure efficient pounds of growth in the finishing phase. Keep in mind, this production system takes advantage of complimentary breeding with the commercial Angus cow. Although Marbling is weighted positively in this index, a positive weighting for Rib-eye Area and a negative weighting for Back Fat are a greater priority in this index to allow for optimum end-product merit. This is the only index that has no emphasis on fertility. Remember that no replacement heifers are being retained.

SALE BULL STATS

25 HEAD IN THE TOP 10% FOR YW

25 HEAD IN THE TOP 15% FOR COW
FERTILITY

25 HEAD IN THE TOP 15% FOR TEAT
AND UDDER

25 HEAD IN THE TOP 3% FOR REA
25 HEAD IN THE TOP 5% FOR BMI
25 HEAD IN THE TOP 1% FOR CHB
ALL BULLS IN THE TOP 25% FOR CHB

Bid Online!
If you are unable to attend the sale,
you can register to watch or bid
online through The Livestock Link
by following these instructions:

The Livestock LinkTM
Videoing • Video Sales • Clerking
• Bid-by-Click Online Sales

- Visit our website, www.thelivestocklink.com
- Click the "Online Auctions" tab
- Click on "Click Here to Register"
- Enter your e-mail address and password, and fill out all your contact information
- Fill out your Banking Information. If you are only viewing the sale and do not wish to bid, this information can be left blank.
- Check the checkbox at the bottom of the page that says "I'm not a robot" to prove you are a real person
- Click "Register" at the bottom of the page
- You will receive an email with a link to activate your account.
- **Please register to bid at least 24 hours in advance of the sale.**
- Contact Aaron Friedt at (701) 590-9597 for help or with any questions.

You will receive an email when you are approved for bidding. All applications will be reviewed and processed promptly. You will receive a bidder number only after you have made a purchase in the sale, and that number will only be used at that sale. When the sale is completed, please contact the sale owner or manager for instructions of payment and delivery of your purchase.

To use our service, you must have access to High Speed Internet.

Questions?

→ **Contact Aaron Friedt at (701) 590-9597 or Jared Peterson at (605) 641-7573** ←

www.TheLivestockLink.com



Tricky's Herefords

Dick & Betty Wettlaufer
44132 234th St.
Winfred, SD 57076-7318

FIRST CLASS
US POSTAGE
PAID
 Fargo, ND
Permit No. 684



**Tricky's Herefords
BULL SALE**

12:00 noon (CDT)
Madison Livestock Auction, Madison, SD

**Saturday,
March 10, 2018**

