

Wick's Cattle's
SUPER BULL
SUNDAY
2016

60

YEARLING
SIMANGUS™
BULLS

20

YEARLING
SIMANGUS™
HEIFER CALVES

SUNDAY, FEB. 7, 2016

WIX BARN & LODGE,
RICHARDTON, ND 2 P.M. MT



LOT 30



Mya, Josie, Mary Jo & Zane Wicks

Welcome,

It has been a good year for the rancher. There has been an ample amount of hay, grass and water for many of us in the beef industry. We are truly grateful for several good seasons to do what we love doing.

Our "Team" this year consists of a very interesting offering. The calves weaned off heavier than prior years – this is good genetics at work... the proof is in the pudding. Along with a lot of power, there are several $\frac{1}{2}$ and $\frac{3}{4}$ brothers on this years lineup. This group of calves will offer performance with calving ease included.

Wicks Cattle maternal group is a tremendous set of mothers. This is the factory and the corner stone of Wicks Cattle. The majority of the cows are SimAngus, with a few being straight angus. Good disposition, high conception rates, low maintenance and great mothering ability are a few qualities that cows need to hang around our place.



We select our herd sires for performance, soundness, disposition, carcass, and appearance. As all good things come to an end, this will be the last crop of Single-tary pasturesired calves. On the upside, we have a massive frontline of Single-tary daughters left on the ranch. The Frontier calves, along with the Uniteds', Hulks', and a handful of 6Shooter calves are very impressive. One of our newest sires, Tradition, has done a nice job for us also; his calves are very docile, softmade, and very complete.

To our past customer, thank you for your continued support. We look forward to serving you and many new customers in the following years. Business is still done here with a firm handshake and an honest word, so please join us this year sale here at the Wicks Cattle Barn on February 7, 2016. Come visit prior to the sale anytime for a sneak peek and to visit, the coffee is on. God bless and thanks again.

Best Wishes,
Zane, Mary Jo, Josie and Mya Wicks

**Watch videos of the bulls online at
www.wickscattle.com**





SUNDAY, FEB. 7, 2016

WIX BARN & LODGE, RICHARDTON, ND 2 P.M. MT

60 YEARLING SIMANGUS BULLS
20 OPEN SIMANGUS HEIFER CALVES

All cattle are tested for coat color. Hair was pulled on all the cows. We only use homozygous black bulls. ALL CATTLE ARE HOMOZYGOUS BLACK UNLESS STATED OTHERWISE.

GUARANTEE: Bulls that sell for \$3,000 or more are guaranteed against any injury that would keep them from servicing cows for the first breeding season. If a problem occurs contact Wicks Cattle immediately and a suitable replacement will be furnished or credit minus any salvage will be given towards next year's sale. The buyer may choose the options. This guarantee does not cover death of the animal. All claims must be submitted by September 1, 2016. Bulls will be semen checked prior to delivery, which is April 1, 2016. Guarantee is null and void if injury/death is sustained due to negligence under the care of new owner.

BRAND INSPECTION: A brand inspector will be available Sale Day.

RETAINED SEMEN INTEREST: Wicks Cattle is retaining 1/3 interest share in every bull selling in this sale. Full possession and full salvage value sell with the bull.

ANNOUNCEMENTS: Announcements made sale day take precedence over any printed material.

ANY PERSON ATTENDING THE SALE DOES SO AT HIS OWN RISK. Neither the owners, nor any person connected with this sale assumes any liability, legal or otherwise.

DELIVERY: Wicks Cattle will keep and feed your yearling bulls after the sale until April 1, 2016. We will tend to your purchases like they are our own. The bulls will be semen tested, poured and two rounds of the foot rot shot will be given. If you choose to do this there will be \$150 per bull collected on sale day. Wicks Cattle has done this program in prior years, the results have been great and the new owners are pleased with their new herd bull purchases. Free delivery is provided by us or you are welcome to take your bulls home the day of the sale and bring them back for the semen test.

CATTLE HEALTH: BULLS: Before weaning: Vista once, Vision 7; At weaning (8/25/15 and 9/14/15): Booster, Poured with Ivomec, drenched with Safeguard and Cattle Active, Fusogard, Nasalgin and poured.

ALL VIDEO SALE: All lots will be videotaped and be played on three big screens sale day. You can view these videos prior to the sale at www.wickscattle.com. There will not be any animals entering the sale ring. This makes sale day a much lighter load for us and the cattle. All lots will be displayed in pens like normal for you to view sale day. We strongly urge you to go through the cattle and make your critiques outside; this will help you during the sale.

HOTEL ACCOMMODATIONS:
Quality Inn & Suites.....800-424-6423 • 701-225-9510
Ramada Grand Dakota Lodge.....800-422-0949 • 701-483-5600
AmericInn800-634-4444 • 701-225-1400

Sale order is catalog order, unless announced from the block.

Videos and photos were taken on 12/19/15.

Average Daily Gains, Weights, Ultrasound Data, Scrotal Measurements and other information will be available a couple weeks before the sale on www.WicksCattle.com.

SCHEDULE OF EVENTS

10 a.m.....Sale Cattle on display
12:30 p.m. 1:30 p.m.Lunch
1:30 p.m.....Richardton High School Rodeo
Team HiredHand Auction
1:55 p.m.....National Anthem, performed by
Kristy Kulka
2 p.m.Sale Begins

SALE DAY PHONES

Zane Wicks (Cell)(701) 290-3938
Mary Jo Wicks (Cell).....(701) 690-7755

AUCTIONEER

Lynn Weishaar.....(605) 866-4670

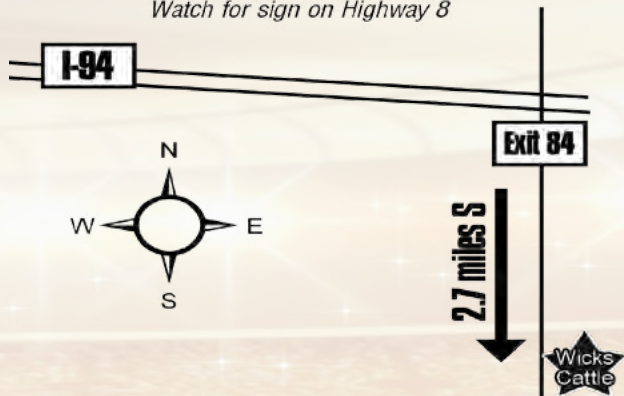
LIVESTOCK REPRESENTATIVES

Dan Piroutek, TriState Livestock News.....(605) 685-4556
Alan Sears, Western Ag Reporter(970) 396-7521
Jeff Thomas, Farm & Ranch Guide.....(406) 581-8859
Scott Ressler, ND Stockmen's Association..(701) 391-7310

SPECIAL GUEST SPEAKER

Roger Tuell, Chappell Feedlot, TuellLand, CO
.....(970) 630-3290

DIRECTIONS to the Ranch, Richardton, ND
Watch for sign on Highway 8



Catalog and ads designed by Strommen Livestock Services, Fort Rice, ND • (701) 445-2020





Joe Hammerschmidt
July 23, 1925-Nov. 30, 2015

“A father is neither an anchor to hold us back, nor a sail to take us there, but a guiding light whose love shows us the way.”

On Monday, November 30, 2015, Mary Jo’s Dad, Joe Hammerschmidt, left us and went to open up the pearly gates.

Joe was a true master of everything who had a high degree of integrity and work ethic. He was a heck of a businessman, electrician, carpenter and an unbelievable mechanic. If you were stumped on anything you could ask him what to do. It might take him a day or two, but he had the answer to your problem. He cared about Wicks Cattle and offered advice and helped when he could. He was always teaching anybody who cared to learn. I wish I could have bottled up all his knowledge before he left us.



Joe was a World War II veteran. He served his country proud, serving 1943 until 1946 in the U.S. Navy aboard the U.S.S. Strauss Destroyer Escort. He could talk for hours about the war. In fact, he has many chapters written about his experiences. His memory was amazing, not only about the war, but about anything that had happened throughout his lifetime.

He is up in heaven now, telling jokes and stories to everyone. He is enjoying laughs with his wife, Mary, and my Mom, Dad and brother, Dan.



Rest Easy, Sailor.
We love & miss you – more.

*Pictured below is the USS
Straus (DE 408) circa 1944 -
the ship Joe served on
during WWII.*





WIX

BARN & LODGE

NOW ACCEPTING BOOKINGS FOR:

- Agricultural and Other Business Meetings
- Scrapbooking or Quilting Parties
- Family Reunions
- Holiday Parties
- Birthday and Anniversary Parties
- Weddings or Rehearsal Parties
- Weekend Get-Aways
- Lodging for Hunters



Call us today to reserve the date!
701) 690-7755 or (701) 974-2332



Also find us on Facebook:
WIX BARN AND LODGE, LLC



We're proud to be on your TEAM!



SJ Ranch, Shannon and Jennifer Goetz

First off I would like to thank Zane and Mary Jo for working hard to find blood lines that will work for ranchers. We have been buying bulls for years from Wicks Cattle and are very pleased with their disposition and ability to put pound's on the calves. Wicks Cattle bulls are easy to handle no matter what their age we can walk up and scratch their backs in the pasture. We intend to continue using Wicks Cattle bulls in our operation for years to come. You will be very pleased with their demeanor.

Shannon & Jennifer Goetz, Richardton, N.D.



Cammack Land & Cattle, Gary & Amy Cammack & Sons

The decision to purchase bulls from Wicks Cattle has been an easy one. Wicks cattle provide high quality composite bulls that are responsible for an additional 50 lbs. at weaning time. Buying from a young ranch family has been a winwin for our ranch family.

• Gary & Amy Cammack, Union Center, S.D.



Beaver Creek Ranch, Mark, Philip & Scotty Messer

We've been buying bulls from Wicks family for years and have been very satisfied with their performance. The most important aspect in our beef industry today is fertility in your bulls, whether it is AI or natural breeding. I believe that the cow/calf producer must breed for performance and not feed for performance. We have been very satisfied with the bulls maintaining their weight and health in this harsh North Dakota weather.

The females that we have kept back from Wicks bulls have been a great addition to our cow herd. I believe the most important thing about the future of the beef industry is starting at conception, calving ease, carcass data and the cows. Wicks cattle is doing a great job of that.

Mark Messer, Richardton, N.D.



Quick Guide to ASA EPDs and Indexes

Expected Progeny Differences (EPDs): EPDs are the most accurate and effective tool available for comparing genetic levels. In using EPDs, the difference between two sires' EPDs represents the unit difference expected in the performance of their progeny. For example, if sires A and B have EPDs of +10 and 5, a 15unit difference would be expected in their progeny (moving from 5 to +10 yields 15 units). Key to using EPDs is knowing in what units they are expressed. For example, if the above case referred to weaning weight EPDs, sire A would be expected to sire 15 pounds more weaning weight than sire B. If calving ease was the trait, sire A would be expected to sire 15 percent more unassisted births in firstcalf heifers; in other words, if sire B sired 30 assists in a group of 100 heifers, we would expect sire A to require 15 assists. A percentileranking chart is required to determine where a bull's EPDs rank him relative to other bulls in the breed. For more detailed information about EPDs and \$ indexes, visit www.Simmental.org. Listed below are the units in which ASA EPDs are expressed:

- **AllPurpose Index (API):** Dollars per cow exposed under an allpurposesire scenario. (See \$ Indexes for more details.)
- **Back Fat (BF):** Inches of carcass backfat at 475 days.
- **Birth Weight (BW):** Pounds of birth weight.
- **Calving Ease (CE):** Percentage of unassisted births when used on heifers.
- **Carcass Weight (CW):** Pounds of carcass weight at 475 days.
- **Docility (DOC):** Percentage of offspring receiving a disposition score of 1 (docile).
- **Maternal Calving Ease (MCE):** Percentage of unassisted births in firstcalving daughters.
- **Milk (MLK):** Pounds of weaning weight due to milk.
- **Marbling (MRB):** Carcass marbling score at 475 days.
- **Maternal Weaning Weight (MWW):** Pounds of weaning weight due to milk and growth.
- **Ribeye Area (REA):** Square inches of carcass ribeye at 475 days. Stayability (STAY): Percentage of daughters remaining in the cowherd at six years of age.
- **Terminal Index (TI):** Dollars per cow exposed under a terminalsire scenario. (See TI for more details.)
- **WarnerBratzler Shear Force (WBSF):** Pounds of force required to shear a ribeye steak.
- **Weaning Weight (WW):** Pounds of weaning weight.
- **Yearling Weight (YW):** Pounds of yearling weight.
- **Yield Grade (YG):** Carcass yield grade score at 475 days.

\$ Indexes: Though EPDs allow for the comparison of genetic levels for many economically important traits, they only provide pieces of the economic puzzle. This is where \$ indexes come in.

Through wellconceived, rigorous mathematical computation, \$ indexes blend EPDs and economics to estimate an animal's overall impact on integrated commercial production. The same technology that led to the dramatic progress in swine, poultry and dairy genetics over the last several decades was used to develop the following \$ indexes:

- **AllPurpose Index (API):** Evaluates sires for use on the entire cow herd (bred to both Angus firstcalf heifers and mature cows) with the portion of their daughters required to maintain herd size retained and the remaining heifers and steers put on feed and sold grade and yield.
- **Terminal Index (TI):** Evaluates sires for use on mature Angus cows with all offspring put on feed and sold grade and yield.
- **Using API and TI:** First, determine which index to use; if you are keeping replacements use API, if not, use TI. Then, just as with EPDs, zero in on the unit difference between bulls. (As described above, index units are in dollars per cow exposed.) The difference can be used to determine how much a bull is worth compared to another. Put another way, how much you can pay for one bull compared to another. For example, when buying an allpurposetype sire, you can quickly figure a bull scoring +100 for API is worth an extra \$6,000 over a +50 bull if both are exposed to 30 cows over 4 years (\$50 diff. x 30 hd. x 4 yr.= \$6,000). A percentileranking chart is required to determine where a bull's index value ranks him relative to other bulls in the breed. For more detailed information about EPDs and \$ indexes, visit www.Simmental.org.
- **Important disclaimer:** DO NOT compare index values of purebreds of different breeds, hybrids of different breed composition or purebreds with hybrids — our system was not developed to make valid comparison among these groups. Therefore, you must first determine the breed and breed composition appropriate for your herd and use index values to compare animals within that population.

2016 Hybrid Simmental Average EPDs vs. Wicks Cattle 2016 Averages

	CE	BW	WW	YW	MCE	Milk	MWW	MRB	BF	REA	API	TI
2015 Hybrid Simmental Average EPDs	10.4	0.7	60	91.8	7.9	21.7	51.6	0.32	0.034	0.59	120.7	677
2015 Wicks Cattle Average EPDs	10.04	1.31	65.08	101.9	7.55	21.19	53.73	0.44	0.02	0.72	126.07	72.34



Reference Sires



Triple C Singletary S3H 15 Sons Sell

BD: 03/04/2006 • Reg #: 2341645 • Homo: Blk & Plld

Sire: **HOOKS SHEAR FORCE 38K** { NICHOLS LEGACY G151
C&D TRACY
ELLINGSON BLACKPERFECTOR
Dam: **LUCAS JOSIE 19K** { RIV BLK JOSIE 43B 755G

The Singletary calves are still grabbing a lot of attention. Calving ease and performance. We calved out the second set of Singletary daughters in 2015 and they were everything we expected and more. Great dispositions, great uddered, milked great, and true super mammas. Owned with Genex.

EPDs							
CE	BW	WW	YW	MCE	MIK	API	TI
3.4	3.8	79.9	123.9	8.7	26.5	165	90.9



CCR Frontier 0053Z 10 Sons Sell

BD: 02/17/2012 • Reg #: 2703756 •

Sire: **MCC DAYLITE 0005** { MCC DAYBREAK
A G MISS IN FOCUS 7302
HTP/SVF DURACELL T52
Dam: **CCR MS 4013 DURA 0053X** { CCR MS P BEEF 4013P

We used him on first calf heifers. There is a lot of growth and pop here. He worked well on the heifers, but I wouldn't call him a sleepall-night heifer bull. All the calves are very impressive with a "soupedup" Angus look to them. Take a look at this sire group. We are very excited on these calves. Owners: ABS and Cow Camp.

EPDs							
CE	BW	WW	YW	MCE	MIK	API	TI
16	1.3	62	99	13	22	156	76



JF American Pride 3107A (Tradition) 6 Sons Sell

BD: 01/06/2013 • Reg #: 2763757 • Homo: Blk & Plld

Sire: **JF AMERICAN PRIDE 0987X** { MR NLC UPGRADE U8676
WLE CRUISIN SUSAN T26
CNS DREAM ON L186
Dam: **JF LATISHA 5153R** { THSR MISS LATISHA L106

This guy was purchased from Janssen Simmental, the same place Net Merit came from. A very stout and thick purebred Simmental bull. Excellent disposition with great hair and a big hoof. His calves are very complete, extremely soft, and loose made. Very sound and free moving. His calves just get better and better every day. You'll see more from tradition. Owners: Wicks Cattle.

EPDs							
CE	BW	WW	YW	MCE	MIK	API	TI
11.1	1.3	64	95	10	27	129	73





W/C UNITED 956Y

5 Sons Sell

BD: 03/03/2011 • Reg #: 2614725 •

Sire: TNT TUITION U238

Dam: MISS WERNING 956W

SAV FINAL ANSWER 0035
TNT MISS S68
SAV BISMARCK 5682
MISS WERNING 756T

A true herdmove bull.

Big things and big numbers to happen to

his offspring. His heifer calves are flatgood ones. The bulls... well, they will speak for themselves. It'll really get your heart pumping when you see this sire group. Owner: Select Sires.

EPDs							
CE	BW	WW	YW	MCE	MIIK	API	TI
10	0.2	95	159	5	20	143	96

W/C Lock and Load 706Z (AKA Six Shooter)

BD: 02/09/2012 • Reg #: 2658482 • 3 Sons Sell

Sire: REMINGTON LOCK N LOAD 54U
Dam: MISS WERNING 706T

REMINGTON ON TARGET 2S
BAR15 MISS KNIGHT78E51G
WS P16
MISS WERNING 401P

These calves are a must see. The heifer calves are truly refined with

a female look to them. The bull calves, super sound, deep, thick, stretchy, and have a cool and cocky look to them. The hips of the 6Shooters are BIG. Will be calving the first set of heifers this spring, and if they milk as good as they look, we hit the lottery. Not many in the offering due to he went missing in action for 4 weeks. Owner: Wicks Cattle.

EPDs							
CE	BW	WW	YW	MCE	MIIK	API	TI
6	2.6	65.7	111.7	10.1	18.1	96.9	63.7

MOHNEN HULK Y218I

7 Sons Sell

BD: 01/25/2011 • Reg #: 2593571 •

Sire: JF MILESTONE 999W

Dam: MOHNEN JILT 1655

TNT TOP GUN R244
MS MAXIE LOU M112S
WULFFS EXT 6106
MOHNEN JILT 910

His name says it all. Not many of these "Hulk calves". But WOW,

they've got some horse power under the hood. Most of them are a frame score bigger. If you want a baldy bull, look at this sire group. A different twist at Wicks Cattle. Owners: Genex.

EPDs							
CE	BW	WW	YW	MCE	MIIK	API	TI
7	2.7	73	114	4	22	104	71

TUELL MR Z 2023

3 Sons Sell

BD: 09/09/2012 • Reg #: 2752458 •

Sire: GW PACESETTER 480W
Dam: GCC LEGEND 5123

HOOKS PACESETTER 8P
GW MISS LUCKY CHARM 766T
VDAR LEGEND 1281
EXAR SKYLINE LADY 1810

Red gene carrier bull that is a dirty good looking scamp. Super

soft made, extremely long and extremely sound as you want to make one. Some calving ease, and eye appeal transfers to his offspring. Owners: Wicks Cattle.

EPDs							
CE	BW	WW	YW	MCE	MIIK	API	TI
14	0	59	107	8	26	131	70

JC MR PREMIUM BEEF 0307Z 2 Sons Sell

BD: 2/14/112 • Reg #: 2681520 •

Sire: GW PREMIUM BEEF 021TS
Dam: JC MS PATHFINDER 030X

GAR US PREMIUM BEEF
GW MISS LUCKY CHARM 410P
GW PATHFINDER 243U
JC MISS LUKY MAN 607S

A bull used for clean up on our yearling heifer pen. They have some

calving ease and great dispositions. Very good numbered with a very attractive look to them. Bull was sold to Khayen Vanderpool, Bison, SD.

EPDs							
CE	BW	WW	YW	MCE	MIIK	API	TI
14.3	0.9	57.2	100.2	4.6	24.3	155	81.7

2015 SIRES HEAVIEST ADJ. WEANING WEIGHT RATIOS

NOTICE WICKS CATTLE SIRES ARE AT THE TOP

6SHOOTER RATIO 106
PREMIUM BEEF RATIO 105
SINGLETARY RATIO 104
TRADITION RATIO 103
UNITED RATIO 102
HULK RATIO 100
FRONTIER RATIO 96

Wicks owned
Wicks owned
Wicks owned
Wicks owned





Bull Sale Offering

SUNDAY, FEB. 7, 2016

WIX BARN & LODGE, RICHARDTON, ND 2 P.M. MT

60 YEARLING SIMANGUS BULLS

20 OPEN SIMANGUS HEIFER CALVES



Lot 1



WIX CU67

Reg#: 3060998

BD: 3/29/2015

1/2 Simmental

Sire: **TRIPLE C SINGLETARY S3H**

- HOOKS SHEAR FORCE 38K
- LUCAS JOSIE 19K
- ACL NOBELMAN
- MISS McB SUPER X 267

Dam: **WIX U67**

Act. BW	ADJ 205	WWR	EPDs							
			CE	BW	WW	YW	MCE	MIK	API	TI
94	790	108	5	2.6	66	101	5	28	109	72

- Mary Jo's bull.
- Dam's first calf brought \$7,500.
- Deep ribbed and soggy.





Lot 2 **WIX CU21 TANK** Reg#: 3061001
 BD: 2/15/2015 1/2 Simmental

Sire: JF AMERICAN PRIDE 3107A { JF AMERICAN PRIDE 0987X
 JF LATISHA 5153R
 S D R CHIEF JUSTICE 662
 BERBOS VIXON 5121

Dam: WIX U21

Lot 3 **WIX CA903 THE WHIZ** Reg#: 3061093
 BD: 3/2/2015 5/8 Simmental

Sire: CCR FRONTIER 0053Z { MCC DAYLITE 0005
 CCR MS 4013 DURA 0053X
 HK TIMEOUT W 81
 KBSR W903

Dam: WIX W903A

Act BW	ADJ 205	WWR	EPDs							
			CE	BW	WW	YW	MCE	MIik	API	TI
84	733	100	14	0.9	55	90	9	30	143	72

- Josie's bull. years ago.
- Dam produced the high seller 4
- Massive and very impressive.

Act BW	ADJ 205	WWR	EPDs							
			CE	BW	WW	YW	MCE	MIik	API	TI
84	815	113	13	1.6	77	114	12	16	144	79

- The Whiz... he did not take a good picture.
- Wide, long, and cool. A+ disposition.
- A true breeder bull
- Out of a firstcalf heifer





WIX C9109

Reg#: 3061012

BD: 3/16/2015

1/2 Simmental

Sire: TRIPLE C SINGLETARY S3H

{ HOOKS SHEAR FORCE 38K
LUCAS JOSIE 19K
CARLSON 004 TORPEDO 611
CARLSON TOP LINE 29613

Dam: CARLSON TORPEDO 9109

Act. BW	ADJ 205	WWR	EPDs							
			CE	BW	WW	YW	MCE	Milk	API	TI
104	801	110	8	1.8	64	102	9	27	132	76

- Possibly the best Singletary son ever produced here.
- Sound as a cat.
- Long spined.
- A breeder bull.



WIX CX43 CONDOR

Reg#: 3061109

BD: 3/6/2015

1/2 Simmental

Sire: W/C UNITED 956Y

{ TNT TUITION U238
MISS WERNING 956W
JF NET MERIT 618S
BERBOS BARBARAMERE 3222

Dam: X3222

Act. BW	ADJ 205	WWR	EPDs							
			CE	BW	WW	YW	MCE	Milk	API	TI
100	734	0	11	0.4	70	116	7	20	131	77

- Full brother to Lot 6.
- Big rumped and thick.
- A pair of flush brothers that are the real McCoy.



WIX C609 STOEGER

Reg#: 3061108

BD: 2/24/2015 1/2 Simmental

Sire: W/C UNITED 956Y

- TNT TUITION U238
- MISS WERNING 956W
- JF NET MERIT 618S
- BERBOS BARBARAMERE 3222

Dam: X3222

Act. BW	ADJ 205	WWR	EPDs							
			CE	BW	WW	YW	MCE	Milk	API	TI
88	726	0	11	0.4	70	116	7	20	131	77

- Flush brother to Lot 5.
- A real dandy here.
- Stems back to the old 3222 cow.



WIX C5103

Reg#: 3060985

BD: 3/18/2015 1/2 Simmental

Sire: TRIPLE C SINGLETARY S3H

- HOOKS SHEAR FORCE 38K
- LUCAS JOSIE 19K
- VERMILION DATELINE 7078
- REICH BLACKCAP LADY M28

Dam: REICH BLACKCAP LADY 5103

Act. BW	ADJ 205	WWR	EPDs							
			CE	BW	WW	YW	MCE	Milk	API	TI
100	774	106	5	3.4	70	114	8	26	125	79

- Big time performance.
- He will make a whale of a set of feeder calves or replacement heifers.
- Cow never misses.



WIX C918

Reg#: 3061003

BD: 3/18/2015 1/2 Simmental

Sire: TRIPLE C SINGLETARY S3H

- HOOKS SHEAR FORCE 38K
- LUCAS JOSIE 19K
- SIK DESIGN 7259
- B A R ROYCE 3003

Dam: 9118 NEW DESIGN B A R

Act. BW	ADJ 205	WWR	EPDs							
			CE	BW	WW	YW	MCE	Milk	API	TI
98	767	105	7	2.3	60	95	7	29	121	72

- Nice, balanced Singletary son.
- A Lot of substance.
- Very docile.





WIX CA444

Reg#: 3061085

BD: 2/24/2015 1/2 Simmental

Sire: CCR FRONTIER 0053Z

{ MCC DAYLITE 0005
CCR MS 4013 DURA 0053X
HRM UPGRADE Y35
REICH ELBA 444

Dam: WIX 444A

Act. BW	ADJ 205	WWR	EPDs							
			CE	BW	WW	YW	MCE	MIK	API	TI
80	722	99	12	0.8	71	108	9	21	147	82

- Take a look here.
- Wide, thick and looong.
- Out of a first calf heifer.



WIX CY70

Reg#: 3061041

BD: 3/10/2015 1/2 Simmental

Sire: MOHNEN HULK Y2181

{ JF MILESTONE 999W
MOHNEN JILT 1655
JF NET MERIT 618S
MS SARGE ALLIANCE T7084

Dam: MISS WIX Y70

Act. BW	ADJ 205	WWR	EPDs							
			CE	BW	WW	YW	MCE	MIK	API	TI
94	771	0	8	2.7	74	113	6	27	109	72

- A cool blaze face.
- Balanced and conformation.
- His mamma was fabulous.





WIX CA641

Reg#: 3061097

BD: 3/3/2015

1/2 Simmental

Sire: CCR FRONTIER 0053Z

MCC DAYLITE 0005
CCR MS 4013 DURA 0053X
HK TIMEOUT W 81
DR BEAUTY 640

Dam: WIX 641A

Act. BW	ADJ 205	WWR	EPDs							
			CE	BW	WW	YW	MCE	MIK	API	TI
82	717	99	12	1.4	71	109	9	16	140	77

- A really good Frontier son.
- Grandmother was a Pathfinder Angus cow.
- Meat and potatoes bull.
- Out of a firstcalf heifer



WIX CY428

Reg#: 3061031

BD: 3/28/2015

3/4 Simmental

Sire: W/C LOCK N LOAD 706Z

REMINGTON LOCK N LOAD54U
MISS WERNING 706T
JF NET MERIT 618S
MISS CU 428

Dam: MISS WIX Y428

Act. BW	ADJ 205	WWR	EPDs							
			CE	BW	WW	YW	MCE	MIK	API	TI
86	781	114	9	1.8	73	111	8	13	114	74

- First 6Shooter offered.
- A real smoker here.
- Not many 6Shooters, take advantage here.
- Heterozygous Black



WIX CW29

Reg#: 3061005

BD: 2/28/2015

5/8 Simmental

Sire: MOHNEN HULK Y2181

JF MILESTONE 999W
MOHNEN JILT 1655
ES DAKOTA NK68
MISS CU 429

Dam: WIX W429

Act. BW	ADJ 205	WWR	EPDs							
			CE	BW	WW	YW	MCE	MIK	API	TI
84	704	103	9	1	65	100	5	17	107	65

- Big, big hipped Hulk son.
- Moderate package.
- Gentle as a dead pig.



WIX CY71

Reg#: 3061045

BD: 3/5/2015

1/2 Simmental

Sire: W/C UNITED 956Y

TNT TUITION U238
MISS WERNING 956W
VSF NET WORTH 956W
NSF MISS BLACKLINE S53

Dam: MISS WIX Y71

Act. BW	ADJ 205	WWR	EPDs							
			CE	BW	WW	YW	MCE	MIK	API	TI
98	754	103	9	1.4	70	117	4	24	114	75

- Exceptional United son.
- Very strong maternal family.
- He'll add pounds to your next calf crop.



Lot 14





WIX CY47

Reg#: 3061033

BD: 3/25/2015

3/4 Simmental

Sire: W/C LOCK N LOAD 706Z

REMINGTON LOCK N LOAD54U
MISS WERNING 706T
PVFJ 4P14 HYB ROOKIE
MISS CU 447

Dam: MISS WIX Y47

Act. BW	ADJ 205	WWR	EPDs							
			CE	BW	WW	YW	MCE	Milk	API	TI
80	713	97	10	0.7	63	102	9	20	111	64

- Another dandy of a 6Shooter.
- Cocky profile.
- Extremely sound.



WIX CY02

Reg#: 3061039

BD: 3/5/2015

5/8 Simmental

Sire: MOHNEN HULK Y2181

JF MILESTONE 999W
MOHNEN JILT 1655
JF NET MERIT 618S
MISS CU 402

Dam: MISS WIX Y02

Act. BW	ADJ 205	WWR	EPDs							
			CE	BW	WW	YW	MCE	Milk	API	TI
88	711	99	9	2	59	89	4	20	103	62

- Big time Hulk son.
- A real pleaser.
- Another strong cow family.



WIX CY31

Reg#: 3061032

BD: 3/24/2015

1/2 Simmental

Sire: TUELL MR. Z2023

GW PACESETTER 480W
GCC LEGEND 5123
JF NET MERIT 618S
WIX U 31

Dam: MISS WIX Y31

Act. BW	ADJ 205	WWR	EPDs							
			CE	BW	WW	YW	MCE	Milk	API	TI
82	734	101	13	0.6	55	90	7	22	126	66

- Jam up bull here.
- Loose made, fills his tracks.
- Hetero black.



Lot 17





WIX C906

Reg#: 3061008

BD: 4/4/2015

1/2 Simmental

Sire: TRIPLE C SINGLETARY S3H

{ HOOKS SHEAR FORCE 38K
LUCAS JOSIE 19K
SAV NET WORTH 4200
BAR RIPPED 4030

Dam: 9060 NETWORTH B A R

Act. BW	ADJ 205	WWR	EPDs							
			CE	BW	WW	YW	MCE	Milk	API	TI
92	776	107	7	2.1	70	112	9	26	137	83

- Here is a nice, nice Singletary son out of a pictureperfect Net Worth
- Keep every heifer out of this guy.



WIX C916

Reg#: 3061010

BD: 3/12/2015

1/2 Simmental

Sire: TRIPLE C SINGLETARY S3H

{ HOOKS SHEAR FORCE 38K
LUCAS JOSIE 19K
SIK DESIGN 7259
BAR KRUGERRAND 410 3316

Dam: 9116 NEW DESIGN B A R

Act. BW	ADJ 205	WWR	EPDs							
			CE	BW	WW	YW	MCE	Milk	API	TI
94	680	93	8	1.7	62	100	9	26	133	75

- Almost a spittin' image of Lot 18.
- You can put a nice set of half brothers together here.
- Female maker.

RIXEN WELDING
Shop or mobile welding and fabrication

DUSTY RIXEN
8561 48th St. SW ~ Richardson, ND 58652
(701) 590-2493





WIX C457

Reg#: 3060969

BD: 3/28/2015

1/2 Simmental

Sire: TUELL MR. Z2023

{ GW PACESETTER 480W
GCC LEGEND 5123
}

Dam: MISS NEB457

Act. BW	ADJ 205	WWR	EPDs							
			CE	BW	WW	YW	MCE	MIIK	API	TI
86	719	99	12	0.2	50	85	4	25	110	62

- Cow family has longevity in them.
- Dam produced a high seller.
- Hetero black.



WIX CX00

Reg#: 3061024

BD: 3/10/2015

1/2 Simmental

Sire: W/C UNITED 956Y

{ TNT TUITION U238
MISS WERNING 956W
JF NET MERIT 618S
600
}

Dam: X00

Act. BW	ADJ 205	WWR	EPDs							
			CE	BW	WW	YW	MCE	MIIK	API	TI
94	750	104	9	2.1	75	120	4	16	117	75

- Whistle-fronted United son.
- Big hiped.
- Clubby made.
- Two axe-handles wide.





WIX CY12

Reg#: 3061035

BD: 3/10/2015

1/2 Simmental

Sire: MOHNEN HULK Y2181

JF MILESTONE 999W
MOHNEN JILT 1655
JF NET MERIT 618S
BERBOS MISS LUCY M121

Dam: MISS WIX Y12

Act. BW	ADJ 205	WWR	EPDs							
			CE	BW	WW	YW	MCE	MIik	API	TI
100	740	103	8	3.2	63	99	6	16	106	65

- Another good blaze faced calf. performance.
- Bigger framed with a truckload of



WIX CA07

Reg#: 3061086

BD: 3/3/2015

1/2 Simmental

Sire: CCR FRONTIER 0053Z

MCC DAYLITE 0005
CCR MS 4013 DURA 0053X
TRIPLE C SINGLETARY S3H
REICH SARA 407

Dam: WIX 407A

Act. BW	ADJ 205	WWR	EPDs							
			CE	BW	WW	YW	MCE	MIik	API	TI
76	773	107	11	1.1	82	128	9	23	151	90

- Frontier strikes again. Tick bigger framed.
- Long and cool made.



WIX CA104

Reg#: 3061091

BD: 3/23/2015

1/2 Simmental

Sire: JC MR PREMIUM BEEF 030Z

GW PREMIUM BEEF 021TS
JC MS PATHFINDER 030X
TRIPLE C SINGLETARY S3H
VBR 8104 GAR1603RITO 112

Dam: WIX 8104A

Act. BW	ADJ 205	WWR	EPDs							
			CE	BW	WW	YW	MCE	MIik	API	TI
104	756	104	8	2.3	79	129	6	20	141	88

- Here is thick and wide. Carcass and pedigree here.
- Out of a first calf heifer.



WIX CX32

Reg#: 3061023

BD: 3/16/2015

3/4 Simmental

Sire: TRIPLE C SINGLETARY S3H

HOOKS SHEAR FORCE 38K
LUCAS JOSIE 19K
HRM COMBINATION U22
MISS CU 632

Dam: MISS WIX X32

Act. BW	ADJ 205	WWR	EPDs							
			CE	BW	WW	YW	MCE	MIik	API	TI
96	694	96	6	3	66	98	7	20	113	70

- Here's Charlie! Mild as Mya.
- Mya's bull.



WIX C4030

Reg#: 3068701

BD: 3/22/2015

1/2 Simmental

Sire: TRIPLE C SINGLETARY S3H

HOOKS SHEAR FORCE 38K
LUCAS JOSIE 19K

Dam: 4030

Act. BW	ADJ 205	WWR	EPDs							
			CE	BW	WW	YW	MCE	MIik	API	TI
86	697	106	5	2.5	64	98	5	26	115	74

- Mother is a tank. Good fronted.
- Round hipped.





Lot 27 WIX CA121

Reg#: 3061103

BD: 3/5/2015

1/2 Simmental

Sire: CCR FRONTIER 0053Z

{ MCC DAYLITE 0005
 CCR MS 4013 DURA 0053X
 HK TIMEOUT W 81
 BERBOS VIXON 5121

Dam: WIX 5121A

Act. BW	ADJ 205	WWR	EPDs							
			CE	BW	WW	YW	MCE	Milk	API	TI
78	675	93	13	0.4	63	99	10	20	143	75

- A chunk here.
- Out of a first calf heifer.
- As wide as he is tall.



Lot 27



Lot 28 WIX CY564

Reg#: 3061038

BD: 4/9/2015

1/2 Simmental

Sire: TRIPLE C SINGLETARY S3H

{ HOOKS SHEAR FORCE 38K
 LUCAS JOSIE 19K
 VAR ROCKY 80029
 WK QUEEN 6564

Dam: MISS WIX Y564

Act. BW	ADJ 205	WWR	EPDs							
			CE	BW	WW	YW	MCE	Milk	API	TI
84	729	101	4	0.7	65	107	7	28	132	83

- Unique Singletary son.
- Very nice bull.
- Maternal making machine.



Lot 28



Lot 29 WIX CA893

Reg#: 3061078

BD: 3/5/2015

1/2 Simmental

Sire: CCR FRONTIER 0053Z

{ MCC DAYLITE 0005
 CCR MS 4013 DURA 0053X
 TRIPLE C SINGLETARY S3H
 LAGRAND FOXY LUCY 3893

Dam: WIX 3893A

Act. BW	ADJ 205	WWR	EPDs							
			CE	BW	WW	YW	MCE	Milk	API	TI
98	778	108	8	3.8	83	129	10	20	139	86

- Out of a really good Singletary daughter.
- She did a nice job her first time around.
- Bigger framed Frontier son.



Lot 29



Lot 30



Lot 30 WIX CX60

Reg#: 3061028

BD: 4/4/2015

3/4 Simmental

Sire: JF AMERICAN PRIDE 3107A

{ JF AMERICAN PRIDE 0987X
 JF LATISHA 5153R
 JF NET MERIT 618S
 MISS NEB 460

Dam: MISS WIX X60

Act. BW	ADJ 205	WWR	EPDs							
			CE	BW	WW	YW	MCE	Milk	API	TI
86	688	94	10	1.2	53	76	7	21	112	62

- A really outstanding Tradition son.
- Loose hided.
- Sound as his daddy.
- Front cover bull.





Lot 31



Lot 32



WIX C8104

Reg#: 3061002

BD: 3/31/2015

1/2 Simmental

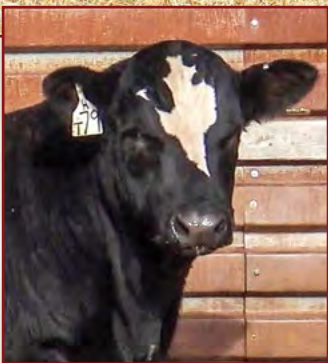
Sire: **W/C LOCK N LOAD 706Z**

{ REMINGTON LOCK N LOAD54U
MISS WERNING 706T
RITO 112 OF 2536 RITO 616
G A R GRID MAKER 1603

Dam: **VBR 8104 GAR1603RITO 112**

Act. BW	ADJ 205	WWR	EPDs							
			CE	BW	WW	YW	MCE	MIik	API	TI
102	791	108	5	3.4	76	126	8	15	106	74

- A 6-Shooter with eye appeal and disposition.
- Mother is extremely moderate.



WIX CT79 (Texas)

Reg#: 3060993

BD: 3/6/2015

3/8 Simmental

Sire: **MOHNEN HULK Y2181**

{ JF MILESTONE 999W
MOHNEN JILT 1655

Dam: **T79**

Act. BW	ADJ 205	WWR	EPDs							
			CE	BW	WW	YW	MCE	MIik	API	TI
94	764	104	7	2.5	67	95	3	18	94	65

- Big-framed Hulk.
- Scale crushing potential.
- He will work anywhere.





Lot 33



Lot 34



WIX C3893

Reg#: 3060967

BD: 3/1/2015

Purebred Angus

Sire: S A V FINAL ANSWER 0035

{ SITZ TRAVELER 8180
S A V EMULOUS 8145
ALBERDA TRAVELER 416
NORTH FORK FOXY LUCY 5009

Dam: LAGRAND FOXY LUCY 3893

Act. BW	ADJ 205	WWR	EPDs							
			CE	BW	WW	YW	MCE	MIK	API	TI
80	695	95	16	2.1	55	95	10	23	130	66

- Super-nice purebred Angus.
- Mated his mother this way for a
- heifer, and we got a bull.
- Excellent Final Answer son.



Blue

BD: 2/19/2015 • Bw: 88 lbs •
WW (8/25/15): 640 lbs (actual)

Sire: T2 (UPGRADE'S FULL BROTHER)

Dam: STRAWBERRY (RED ROAN SHORTHORN)

- Ol' Blue speaks for himself.
- True blue roan.
- Mother raised two calves and still weaned off like a champ.





WIX C587

Reg#: 3060984

BD: 3/30/2015

1/2 Simmental

Sire: TRIPLE C SINGLETARY S3H

HOOKS SHEAR FORCE 38K
LUCAS JOSIE 19K
B C C BUSHWACKER 4193
REICH MAJESTIC K39

Dam: REICH MAJESTIC 587

Act. BW	ADJ 205	WWR	EPDs							
			CE	BW	WW	YW	MCE	Milk	API	TI
94	723	99	6	2.6	63	96	6	27	117	72

- Singletary stamped 'em again.
- Younger calf.
- Out of a really good Reich cow.



WIX CX302

Reg#: 3061014

BD: 3/27/2015

5/8 Simmental

Sire: TUELL MR. Z2023

GW PACESETTER 480W
GCC LEGEND 5123
JF NET MERIT 618S
MISS CU 302

Dam: X302

Act. BW	ADJ 205	WWR	EPDs							
			CE	BW	WW	YW	MCE	Milk	API	TI
80	728	101	13	0.6	54	87	7	19	125	64

- His picture says it all.
- Heterozygous black.
- A proven cow family.



WIX C604

Reg#: 3060992

BD: 3/11/2015

1/2 Simmental

Sire: TRIPLE C SINGLETARY S3H

HOOKS SHEAR FORCE 38K
LUCAS JOSIE 19K
WHITESTONE WIDESPREAD MB

Dam: WIDESPREAD 604

Act. BW	ADJ 205	WWR	EPDs							
			CE	BW	WW	YW	MCE	Milk	API	TI
102	684	100	5	2.3	63	98	9	24	111	68

- Strong maternal traits here.
- Singletary and Widespread.
- You can't go wrong.



WIX CX94

Reg#: 3061030

BD: 3/15/2015

1/2 Simmental

Sire: MOHNEN HULK Y2181

JF MILESTONE 999W
MOHNEN JILT 1655
JF NET MERIT 618S
MISS NEB 494

Dam: MISS WIX X94

Act. BW	ADJ 205	WWR	EPDs							
			CE	BW	WW	YW	MCE	Milk	API	TI
92	596	87	8	1.7	54	80	4	19	97	57

- Moderate made Hulk son.
- A real chunk of meat here.
- Out of a Net Merit daughter that milks great.



WIX CA611

Reg#: 3061081

BD: 3/6/2015

1/2 Simmental

Sire: CCR FRONTIER 0053Z

MCC DAYLITE 0005
CCR MS 4013 DURA 0053X
TRIPLE C SINGLETARY S3H
MISS CU 611

Dam: WIX 611A

Act. BW	ADJ 205	WWR	EPDs							
			CE	BW	WW	YW	MCE	Milk	API	TI
88	714	98	9	2.7	78	118	8	23	132	81

- 3/4 brother to Lot 29.
- Bigger framed.
- A lot of gas in the tank.





WIX C596

Reg#: 3068698

BD: 4/22/2015

1/2 Simmental

Sire: TRIPLE C SINGLETARY S3H

HOOKS SHEAR FORCE 38K
LUCAS JOSIE 19K
B C C BUSHWACKER 4193
REICH MISS WIX L04

Dam: REICH MISS WIX 596

Act. BW	ADJ 205	WWR	EPDs							
			CE	BW	WW	YW	MCE	Milk	API	TI
86	756	103	7	1.8	70	108	8	26	127	78

- He is a younger calf.
- Full brother sold last year for \$5,000.
- You won't recognize this guy in the spring.



WIX CA576

Reg#: 3061099

BD: 3/2/2015

1/4 Simmental

Sire: CCR FRONTIER 0053Z

MCC DAYLITE 0005
CCR MS 4013 DURA 0053X
HK TIMEOUT W 81
REICH BEAUTY 576

Dam: WIX JR576A

Act. BW	ADJ 205	WWR	EPDs							
			CE	BW	WW	YW	MCE	Milk	API	TI
76	646	89	14	0.3	61	94	10	21	151	76

- As wide as two ax handles.
- He will be a 3/4 brother to Lot 27.
- These two bulls go together like peas in a pod.



WIX CA31

Reg#: 3061096

BD: 2/28/2015

1/2 Simmental

Sire: CCR FRONTIER 0053Z

MCC DAYLITE 0005
CCR MS 4013 DURA 0053X
HK TIMEOUT W 81
WIX U 31

Dam: WIX U31

Act. BW	ADJ 205	WWR	EPDs							
			CE	BW	WW	YW	MCE	Milk	API	TI
86	690	95	12	0.8	64	96	9	19	135	72

- Another 3/4 brother to Lot 27 and Lot 51.
- We really like the Frontier calves.



WIX CY76

Reg#: 3061048

BD: 3/23/2015

3/4 Simmental

Sire: W/C LOCK N LOAD 706Z

REMINGTON LOCK N LOAD54U
MISS WERNING 706T
JF NET MERIT 618S
MISS DLC 76

Dam: MISS WIX Y76

Act. BW	ADJ 205	WWR	EPDs							
			CE	BW	WW	YW	MCE	Milk	API	TI
84	643	89	9	1	54	84	7	16	109	64

- The last of the 6Shooters. extremely wide.
- His mother is moderate framed and



WIX CT76

Reg#: 3060997

BD: 3/8/2015

3/8 Simmental

Sire: MOHNEN HULK Y2181

JF MILESTONE 999W
MOHNEN JILT 1655

Dam: MISS DLC 76

Act. BW	ADJ 205	WWR	EPDs							
			CE	BW	WW	YW	MCE	Milk	API	TI
94	838	114	7	2.8	70	107	2	17	92	67

- Last of the white faced bulls.
- He will sire BIG feeder cattle.
- Pack the pounds on.





WIX C3222

Reg#: 3060971

BD: 3/29/2015

1/2 Simmental

Sire: JF AMERICAN PRIDE 3107A

JF AMERICAN PRIDE 0987X
JF LATISHA 5153R
HBR BIG VALLEY 9023
SITZ BARBARAMERE 2709

Dam: BERBOS BARBARAMERE 3222

Act. BW	ADJ 205	WWR	EPDs							
			CE	BW	WW	YW	MCE	Miik	API	TI
80	707	97	12	0.7	42	69	8	29	127	60

- The old girl strikes again.
- Late born calf.
- This cow always produces great ones, he will surprise you.



WIX C407

Reg#: 3068697

BD: 5/4/2015

1/2 Simmental

Sire: TRIPLE C SINGLETARY S3H

HOOKS SHEAR FORCE 38K
LUCAS JOSIE 19K
CONNELLY LEAD ON
REICH SARA M11

Dam: REICH SARA 407

Act. BW	ADJ 205	WWR	EPDs							
			CE	BW	WW	YW	MCE	Miik	API	TI
90	803	110	5	2.7	75	120	7	27	128	84

- Youngest calf in the sale, but a good one.
- Out of a very, very good Lead On daughter.
- Nice recipe here.



WIX C520

Reg#: 3068702

BD: 4/8/2015

1/2 Simmental

Sire: JF AMERICAN PRIDE 3107A

JF AMERICAN PRIDE 0987X
JF LATISHA 5153R
BT RIGHT TIME 24J
CN QUEEN LUCY FORTUNE 81

Dam: CN QUEEN LUCY FORTUNE 520

Act. BW	ADJ 205	WWR	EPDs							
			CE	BW	WW	YW	MCE	Miik	API	TI
78	709	97	11	0.3	56	85	5	26	117	65

- Strike a Fortune here.
- Keep every replacement heifer.
- A younger bull, but very complete.



WIX C568

Reg#: 3068699

BD: 4/1/2015

1/2 Simmental

Sire: TRIPLE C SINGLETARY S3H

HOOKS SHEAR FORCE 38K
LUCAS JOSIE 19K
S A V 8180 TRAVELER 004
REICH MISS WIX M96

Dam: REICH MISS WIX

Act. BW	ADJ 205	WWR	EPDs							
			CE	BW	WW	YW	MCE	Miik	API	TI
90	682	93	7	2	67	109	6.9	24	126	73

- April fools calf, but don't let him fool you... he will give you proven pounds.



WIX CA148

Reg#: 3061092

BD: 3/2/2015

1/2 Simmental

Sire: CCR FRONTIER 0053Z

MCC DAYLITE 0005
CCR MS 4013 DURA 0053X
GW GAME CHANGER 823Y
REICH KARAMA 5148

Dam: WIX 5148A

Act. BW	ADJ 205	WWR	EPDs							
			CE	BW	WW	YW	MCE	Miik	API	TI
62	647	89	13	0.7	68	107	11	25	152	80

- Spittin' image to Lot 27 and Lot 51.
- Would add a lot of style to a calf
- crop.
- Very complete and smooth.





WIX CW188

Reg#: 3061006

BD: 3/12/2015

1/4 Simmental

Sire: W/C UNITED 956Y

- TNT TUITION U238
- MISS WERNING 956W
- JF NET MERIT 618S
- 21AR BLACKCAP E41BB

Dam: WIX W4188

Act. BW	ADJ 205	WWR	EPDs							
			CE	BW	WW	YW	MCE	Milk	API	TI
106	683	95	10	1.8	66	108	7	18	122	70

- Out of a cow that had a \$5,500 bull calf last year.
- Her calves mature nicely.



WIX CA61

Reg#: 3061071

BD: 2/28/2015

3/8 Simmental

Sire: CCR FRONTIER 0053Z

- MCC DAYLITE 0005
- CCR MS 4013 DURA 0053X
- SCHIEFELBEIN EFFECTIVE 61
- MISS WIX Y61

Dam: WIX Y61A

Act. BW	ADJ 205	WWR	EPDs							
			CE	BW	WW	YW	MCE	Milk	API	TI
76	694	95	17	1.3	67	107	11	23	160	82

- Calving ease heifer bull.
- His mamma is a darn good, first calf heifer producer.



WIX CA47

Reg#: 3068703

BD: 3/5/2015

5/8 Simmental

Sire: CCR FRONTIER 0053Z

- MCC DAYLITE 0005
- CCR MS 4013 DURA 0053X
- PVFJ 4P14 HYB ROOKIE
- X447

Dam: WIX X47A

Act. BW	ADJ 205	WWR	EPDs							
			CE	BW	WW	YW	MCE	Milk	API	TI
78	621	94	12	2.1	71	111	11	22	136	75

- Good numbered calf with calving ease.
- Interesting bull.
- Take a peek.



Sale Day Phones:

Zane Wicks (Cell)..... (701) 290-3938

Mary Jo Wicks (Cell)..... (701) 690-7755

We sincerely hope you can all make it to the sale, but if you cannot, please know that you can work with one of us during the sale. Please contact us ahead of sale day so we can be sure to answer questions and help you get the bull you need.



WIX C461

Reg#: 3060970

BD: 3/11/2015

1/2 Simmental

Sire: WHEATLAND MRBOJANGLES97X

- WHEATLAND BULL 680S
- WHEATLAND LADY 742T

Dam: MISS CU 461

Act. BW	ADJ 205	WWR	EPDs							
			CE	BW	WW	YW	MCE	Milk	API	TI
94	675	92	8	1.6	50	77	4	23	93	54

- Heterozygous black.
- Out of a good ol' Craig Uden cow.
- The only Bojangles son in the sale.





WIX CAY188

Reg#: 3061076

BD: 3/26/2015

1/2 Simmental

Sire: JC MR PREMIUM BEEF 030Z

- { GW PREMIUM BEEF 021TS
- { JC MS PATHFINDER 030X
- { SCHIEFELBEIN EFFECTIVE 61
- { MISS WIX Y188

Dam: WIX Y188A

Act. BW	ADJ 205	WWR	EPDs							
			CE	BW	WW	YW	MCE	MIK	API	TI
74	760	104	17	2	68	112	8	19	159	85

- Another heifer bull with style to burn.
- We really like this good scamp.
- Study your lesson here. He really grows on ya.



WIX C5159

Reg#: 3068700

BD: 3/31/2015

1/2 Simmental

Sire: TRIPLE C SINGLETARY S3H

- { HOOKS SHEAR FORCE 38K
- { LUCAS JOSIE 19K
- { GDAR ROLLS ROYCE 095
- { JAYNBEE KARAMA 92D

Dam: REICH KARAMA 5159

Act. BW	ADJ 205	WWR	EPDs							
			CE	BW	WW	YW	MCE	MIK	API	TI
84	711	97	7	1.3	57	92	6	27	118	70

- Last Singletary son.
- Younger calf that is catching up very well.



WIX CY28

Reg#: 3061046

BD: 3/27/2015

3/4 Simmental

Sire: HRM COMBINATION U22

- { GLS COMBINATION R2
- { TNT MISS GRETCHEN L116
- { HRM COMBINATION U22
- { WIX W428

Dam: MISS WIX Y28

Act. BW	ADJ 205	WWR	EPDs							
			CE	BW	WW	YW	MCE	MIK	API	TI
80	659	91	11	2.3	66	95	8	15	118	65

- Small headed and smooth shouldered.
- An athletic candidate here.





WIX CYOI

Reg#: 3061049

BD: 3/28/2015

3/4 Simmental

Sire: JF AMERICAN PRIDE 3107A

- JF AMERICAN PRIDE 0987X
- JF LATISHA 5153R
- JF NET MERIT 618S
- MISS CU 601

Dam: MISS WIX Y01

Act. BW	ADJ 205	WWR	EPDs							
			CE	BW	WW	YW	MCE	Milk	API	TI
82	660	96	11	1.1	58	84	8	23	121	68

- Another young gun with lots of ammo.
- Ratioid 107 at birth.
- I like him.



WIX CZ28

Reg#: 3061060

BD: 3/22/2015

1/2 Simmental

Sire: TUELL MR. Z2023

- GW PACESETTER 480W
- GCC LEGEND 5123
- PVFJ 4P14 HYB ROOKIE
- X428

Dam: WIXZX28

Act. BW	ADJ 205	WWR	EPDs							
			CE	BW	WW	YW	MCE	Milk	API	TI
78	698	95	14	0.1	59	98	9	20	131	68

- Calving ease deluxe.
- Will be a cow hunting machine.
- Calm and cool.
- Heterozygous black.



WIX C40I

Reg#: COMMERCIAL

BD: 3/2/2015

Sire: JF AMERICAN PRIDE 3107A

Dam: WHITESTONE WIDESPREAD DAM

Act. BW	ADJ 205	WWR	EPDs							
			CE	BW	WW	YW	MCE	Milk	API	TI
90	710	101	12	1.1	52	88	7	21	124	68

- Sells commercial.
- Heterozygous black.
- He will fit your needs.



EVERY JOB, EVERY TIME.

Introducing the all new 2016 Polaris Ranger Lineup featuring ProFit Cab Integration.



RANGER® 570
NEW! 44HP PROSTAR® ENGINE
1500 LBS TOWING CAPACITY

RANGER XP® 900
NEW! 68HP PROSTAR® ENGINE
NEW! GRAPHICS & COLOR SCHEMES

RANGER CREW® 900
60HP PROSTAR® ENGINE
5-PASSENGER CAPABILITY

Vehicles shown with optional accessories. **Find yours today at Dakota Sports, Dickinson, N.D., 58601. 1-800-287-0244 • (701) 225-0244**

WARNING: The Polaris RANGER® can be hazardous to operate and is not intended for on-road use. Driver must be at least 16 years old with a valid driver's license to operate. Passengers must be at least 12 years old. Drivers and passengers should always wear helmets, eye protection, and seat belts. Always use cab nets or doors (as equipped). Never engage in stunt driving, and avoid excessive speeds and sharp turns. Riding and alcohol/drugs don't mix. All drivers should take a safety training course. Call 800-342-3764 for additional information. Check local laws before riding on trails. ©2014 Polaris Industries Inc.



Amber Waves



OVERHEAD DRIVE UNDER CAKE BIN

	Model 1410C	Model 1415C
Bushels:	1160	1500
Cu. Ft. Capacity:	1430	1800
Tons of Cow Cake:	24-28	32-36
Total Bin Height:	26' 10"	29' 4"

- 9" Above Ground Clearance
- 10'5" Inside Width Clearance
- 50 Degree Bottom Cone Slope
- Epoxy Coated Inside
- Double Skid Base
- Natural Draft Air Vent System
- Remote Operated Locking Lid
- Polyurethane Painted Exterior
- Poke Hole
- View Glasses
- Delivery and Onsite Set-Up
- Top Manhole
- Exterior Ladder



866-859-2193

Richardton, ND www.amberwavesinc.com

Wick's Cattle's SUPER BULL SUNDAY 2016

Heifer Offering

Heifers will be sorted into groups of five;
selling choice 2x and then in groups.
Registration papers can be transferred
for \$100 more, if desired.



Lot 60 WIX CX202

Reg#: 3061020

BD: 3/8/2015 1/2 Simmental

Sire: MOHNEN HULK Y2181

JF MILESTONE 999W
MOHNEN JILT 1655
JF NET MERIT 618S
MISS SW 202

Dam: X202

Act. BW	ADJ 205	WWR	EPDs							
			CE	BW	WW	YW	MCE	Milk	API	TI
104	627	102	7	3.8	67	100	4	14	98	64

• Blaze face.



Lot 62 WIX C408

Reg#: 3060973

BD: 3/22/2015 1/2 Simmental

Sire: JF AMERICAN PRIDE 3107A

JF AMERICAN PRIDE 0987X
JF LATISHA 5153R
WHITESTONE WIDESPREAD MB

Dam: WIDESPREAD 408

Act. BW	ADJ 205	WWR	EPDs							
			CE	BW	WW	YW	MCE	Milk	API	TI
76	578	97	11	0.6	54	81	9	23	119	62



Lot 64 WIX CA402

Reg#: 3061098

BD: 3/28/2015 5/8 Simmental

Sire: JC MR PREMIUM BEEF 030Z

GW PREMIUM BEEF 021TS
JC MS PATHFINDER 030X
VSF NET WORTH 956W
MISS CU 402

Dam: WIX 402A

Act. BW	ADJ 205	WWR	EPDs							
			CE	BW	WW	YW	MCE	Milk	API	TI
92	666	112	9	2.4	77	123	3	20	125	81



Lot 66 WIX CX57

Reg#: 3061019

BD: 3/7/2015 1/2 Simmental

Sire: WHEATLAND MRBOJANGLES97X

WHEATLAND BULL 680S
WHEATLAND LADY 742T
JF NET MERIT 618S
MISS NEB457

Dam: X457

Act. BW	ADJ 205	WWR	EPDs							
			CE	BW	WW	YW	MCE	Milk	API	TI
80	518	87	9	1.5	51	78	6	22	105	59



Lot 61 WIX CW115

Reg#: 3061013

BD: 3/10/2015 3/4 Simmental

Sire: W/C LOCK N LOAD 706Z

REMINGTON LOCK N LOAD54U
MISS WERNING 706T
JF NET MERIT 618S
MISS SW 115

Dam: WIX W115

Act. BW	ADJ 205	WWR	EPDs							
			CE	BW	WW	YW	MCE	Milk	API	TI
78	609	99	10	1.1	62	96	7	13	111	64



Lot 63 WIX CZ60

Reg#: 3061055

BD: 3/11/2015 1/2 Simmental

Sire: TUELL MR. Z2023

GW PACESETTER 480W
GCC LEGEND 5123
PVFJ 4P14 HYB ROOKIE
MISS WIX X60

Dam: WIXZX60

Act. BW	ADJ 205	WWR	EPDs							
			CE	BW	WW	YW	MCE	Milk	API	TI
80	539	93	12	0.8	56	96	9	23	125	65



Lot 65 WIX CZ04

Reg#: 3061056

BD: 4/3/2015 5/8 Simmental

Sire: HRM COMBINATION U22

GLS COMBINATION R2
TNT MISS GRETCHEN L116
TRIPLE C SINGLETARY S3H
WIDESPREAD 604

Dam: WIXZ604

Act. BW	ADJ 205	WWR	EPDs							
			CE	BW	WW	YW	MCE	Milk	API	TI
82	648	105	9	1.7	73	109	9	17	120	72



Lot 67 WIX CAX00

Reg#: 3061087

BD: 3/30/2015 5/8 Simmental

Sire: JC MR PREMIUM BEEF 030Z

GW PREMIUM BEEF 021TS
JC MS PATHFINDER 030X
PVFJ 4P14 HYB ROOKIE
X00

Dam: WIX X00A

Act. BW	ADJ 205	WWR	EPDs							
			CE	BW	WW	YW	MCE	Milk	API	TI
82	640	104	11	1.8	76	123	7	19	132	80





WIX CZ07

Reg#: 3061054

BD: 4/24/2015

5/8 Simmental

Sire: HRM COMBINATION U22

{ GLS COMBINATION R2
 TNT MISS GRETCHEN L116
 JF NET MERIT 618S
 WIDESPREAD 607

Dam: WIXZ607

Act. BW	ADJ 205	WWR	EPDs							
			CE	BW	WW	YW	MCE	Milk	API	TI
78	629	102	11	1.6	67	99	9	11	114	65



WIX CT700

Reg#: 3060994

BD: 3/29/2015

3/8 Simmental

Sire: HRM COMBINATION U22

{ GLS COMBINATION R2
 TNT MISS GRETCHEN L116
 K C F BENNETT TOTAL
 FLYING V BLACKEMBER 5101

Dam: FLYINGVPRIDEOFEMBER 100T

Act. BW	ADJ 205	WWR	EPDs							
			CE	BW	WW	YW	MCE	Milk	API	TI
68	637	107	14	0.1	64	99	9	20	125	69



WIX CAW29

Reg#: 3061074

BD: 3/22/2015

5/8 Simmental

Sire: JC MR PREMIUM BEEF 030Z

{ GW PREMIUM BEEF 021TS
 JC MS PATHFINDER 030X
 PVFJ 4P14 HYB ROOKIE
 WIX W429

Dam: WIX W29A

Act. BW	ADJ 205	WWR	EPDs							
			CE	BW	WW	YW	MCE	Milk	API	TI
80	607	105	11	1.2	72	117	8	20	133	78



WIX CX02

Reg#: 3061022

BD: 3/10/2015

1/2 Simmental

Sire: MOHNEN HULK Y2181

{ JF MILESTONE 999W
 MOHNEN JILT 1655
 JF NET MERIT 618S
 MISS CU 402

Dam: X402

Act. BW	ADJ 205	WWR	EPDs							
			CE	BW	WW	YW	MCE	Milk	API	TI
90	581	95	8	3	58	89	4	19	96	59

TK
Veterinary Service
GLEN ULLIN, ND

**LARGE ANIMAL
AMBULATORY SERVICES**

ULTRASOUND
FETAL AGE & SEXING
BULL TESTING
EMBRYO TRANSFER

The services above include the
FREE USE
of our Hydraulic Chute!

Dr. Travis Kulka (701) 301-2421

Jason & Cody Kraft
dakfoam@westriv.com
5450 Hwy 21, Carson, ND 58529
Office: 701-622-3151 • Cell: 701-391-8224

SPRAY FOAM INSULATION FOR
RESIDENTIAL, AGRICULTURAL
& COMMERCIAL BUILDINGS

*Jason put his Kraftmanship into
Wicks Cattle. Check it out!*





WIX CA46

Reg#: 3061100

BD: 3/29/2015

1/2 Simmental

Sire: JC MR PREMIUM BEEF 030Z

{ GW PREMIUM BEEF 021TS
 { JC MS PATHFINDER 030X
 { HRM UPGRADE Y35
 { BRUNERS MS NEWDESIGN 878

Dam: WIX W946A

Act. BW	ADJ 205	WWR	EPDs							
			CE	BW	WW	YW	MCE	Milk	API	TI
80	700	114	10	1.1	74	117	4	17	138	84



WIX CY819

Reg#: 3061040

BD: 4/3/2015

5/8 Simmental

Sire: HRM COMBINATION U22

{ GLS COMBINATION R2
 { TNT MISS GRETCHEN L116
 { SS EBONY'S GRANDMASTER
 { VBR 819 OF 332 JBARJ 314

Dam: MISS WIX Y819

Act. BW	ADJ 205	WWR	EPDs							
			CE	BW	WW	YW	MCE	Milk	API	TI
86	691	116	9	2.2	71	105	7	15	114	69



WIX CA173

Reg#: 3061084

BD: 3/3/2015

1/2 Simmental

Sire: CCR FRONTIER 0053Z

{ MCC DAYLITE 0005
 { CCR MS 4013 DURA 0053X
 { PVFJ 4P14 HYB ROOKIE
 { AKERS ERICA P173

Dam: WIX P173A

Act. BW	ADJ 205	WWR	EPDs							
			CE	BW	WW	YW	MCE	Milk	API	TI
74	561	97	13	1	71	112	12	21	147	79



WIX CY17

Reg#: 3061050

BD: 3/30/2015

5/8 Simmental

Sire: HRM COMBINATION U22

{ GLS COMBINATION R2
 { TNT MISS GRETCHEN L116
 { JF NET MERIT 618S
 { KLATT 317

Dam: MISS WIX Y17

Act. BW	ADJ 205	WWR	EPDs							
			CE	BW	WW	YW	MCE	Milk	API	TI
74	608	99	11.7	0.7	64	92	7	14	117	65



WIX CAX29

Reg#: 3061075

BD: 3/1/2015

5/8 Simmental

Sire: CCR FRONTIER 0053Z

{ MCC DAYLITE 0005
 { CCR MS 4013 DURA 0053X
 { PVFJ 4P14 HYB ROOKIE
 { X429

Dam: WIX X29A

Act. BW	ADJ 205	WWR	EPDs							
			CE	BW	WW	YW	MCE	Milk	API	TI
70	548	94	13.6	0.5	69	107	11	19	142	76



WIX CY40

Reg#: 3061042

BD: 4/2/2015

3/4 Simmental

Sire: JF AMERICAN PRIDE 3107A

{ JF AMERICAN PRIDE 0987X
 { JF LATISHA 5153R
 { JF NET MERIT 618S
 { MISS CU 640

Dam: MISS WIX Y40

Act. BW	ADJ 205	WWR	EPDs							
			CE	BW	WW	YW	MCE	Milk	API	TI
76	695	113	11.2	0.5	63	93	8	27	123	72



WIX CZ17

Reg#: 3061061

BD: 3/18/2015

3/4 Simmental

Sire: TUELL MR. Z2023

{ GW PACESETTER 480W
 { GCC LEGEND 5123
 { TRIPLE C SINGLETARY S3H
 { SRS SKYE S17

Dam: WIX Z17

Act. BW	ADJ 205	WWR	EPDs							
			CE	BW	WW	YW	MCE	Milk	API	TI
74	544	0	10.3	0.8	66	109	8	26	133	76



WIX C444

Reg#: 3060974

BD: 3/28/2015

1/2 Simmental

Sire: TRIPLE C SINGLETARY S3H

{ HOOKS SHEAR FORCE 38K
 { LUCAS JOSIE 19K
 { CONNEALY LEAD ON
 { JAYNBEE ELBA 140D

Dam: REICH ELBA 444

Act. BW	ADJ 205	WWR	EPDs							
			CE	BW	WW	YW	MCE	Milk	API	TI
83	562	95	6.9	1.3	58	93	7	26	129	75

• Red.

Proud to be on the Wicks Cattle promotion team!



STROMMEN

livestock services

Aaron & Sheyna Strommen, Fort Rice, N.D.
(701) 445-2020 strommen@westriv.com (701) 290-3886

Specializing in promotional materials for the livestock industry:
Advertisements ~ Catalogs ~ Freelance Writing





Farmers Union INSURANCE

*Learn more about the benefits of
Farmers Union Insurance
and save on your car, home and farm insurance
policy. Start saving today with an online car
insurance quote you can trust from
Farmers Union Insurance.*

<http://www.fumic.com/>



Kandie Kremer
Agent

Address:
119 E. Main Street, PO Box 757
Beulah, ND 58523

Office: 701-873-5147
Cell: 701-880-0531
Fax: 701-873-2449
Email: kandie@westriv.com

Wicks Cattle **NEW** **BEXTRA** Dealer



US Patent No. 8,997,693



Best Livestock Feeder

The Bextra feeder has more economical advantages than any other feeder on the market. Research out of OSU has demonstrated the haysavings to be significant. With the high cost of feed savings can pay for the feeder in a matter of months.

balanced
effective
efficient
convenient
economical
durable



The **Bextra** Bale Feeder demonstrates **Hay Savings of up to 75%** over conventional feeders as proven in the Oklahoma State research trials. And they are consistent with more costly and cumbersome cone or chain feeders. Search OSU Bale Feeders Save Dollars!

1150 Broad St. ♦ Princeton, NE 68404
402-560-5385 Trevor L. Lienemann

Calculate your Hay \$\$\$ Savings



Online Hay\$
Calculator

www.bextrafeeder.com





FEBRUARY IS PAYBACK MINERAL MONTH

Ranchers, make
PAYBACK MINERAL
part of your productive feeding program,
for a healthy, profitable herd.

Cows are the profit center of your herd. To ensure a beef operation's financial success, a cow needs to breed back in a timely manner and wean a marketable calf the following year

Your operation's success begins with proper year-round herd nutrition supplemented with essential trace minerals. Payback Minerals with Zinpro performance minerals and Bio-Mos® is your solution to provide superior nutrition during the final trimester of gestation, calving, peak lactation and preparation for breeding season, a crucial time for maximizing your profits and ensuring the long-term success of your herd.



NUTRITIONAL SOLUTIONS FROM 

Southwest Grain Richardton Service Center
7019743831

SMARTLIC® SUPPLEMENTS

It's Time to Put your Bulls to Work!

With Newly Patented FlaxLic® Supplements & the Power of Omega3



FlaxLic® is Nutritionally Engineered® to provide essential vitamins and minerals for proper bull conditioning. FlaxLic® blocks are completely fortified to prepare your bulls for breeding season.

In addition, FlaxLic® is the first low moisture block to contain a high level of alpha-linolenic acid derived from flaxseed and edible linseed oil. High energy FlaxLic blocks contain 15% fat, essential minerals, and vitamins, and work around the clock to meet the demands of breeding bulls.



Get your bulls ready for breeding season
with FlaxLic and Omega3 fatty acids!

FlaxLic now has a U.S. Product
and Process Patent for elevating
Lipid Blood Levels in Livestock.

smartlic.com
(888) 571-3421





CHS[®]



**Southwest
Grain**

Southwest North Dakota's Source for:



MERCK



CENEX LUBRICANTS
OUR ENERGY COMES THROUGH.™



**Boehringer
Ingelheim**



By **WINFIELD**



zoetis
FOR ANIMALS. FOR HEALTH. FOR YOU.



SOUTHWEST GRAIN
RICHARDTON SERVICE CENTER
(701) 974-3831



Taylor Nursery



Opens April 1, 2016

202 W Main St, Taylor, ND 58656

Phone: (701) 974-3535


701-260-8564



Dickinson, North Dakota
www.HaukSales.com

Hauk Sales & Services

Storage/Shipping Container Rentals & Sales
Bobcat Attachment Sales
Farm Equipment Sales
Windbreak Panels
Sucker Rod
Pipe & Super Steel Sales
Freestanding Panels
Bottomless Bunks



Union Center, SD
CAMMACK
RANCH SUPPLY

Dakota Dart Gun



\$425

Rifle Only

Allows medication of hard to handle animals or those in remote locations with ease. Very accurate at 60 feet.

Starter Kit \$555.90

Custom Stainless Steel Branding Irons



Figures \$39
Bars & 1/4 Circles \$29

Electric Branding Irons

ALL PRICES LISTED BELOW APPLY TO STANDARD 2", 2.5", 3", 3.5", OR 4" LETTERS OR FIGURES.

2" & 2.5" electric branders are made with 3/16" face, 3" and above with 3/8".



Single letter or figure \$112.00*
Two letters or figures \$122.00*
Three letters or figures.... \$132.00*

We've got your brand, custom design... NO PROBLEM!!! Call for Quotes!

Rhino N30 Digger



Planetary Drive Digger with 9" and 12" Augers

Skid Steer Plate
Sale \$3,095⁰⁰

Loader Mounts
Sale \$2,959⁰⁰

Ranch Hand Mineral Tubs



- Designed for Range Conditions
- Encourages consistent consumption
- Discourages over consumption
- Contains a quality vitamin package

Convenient Size
Easy to Handle
200 lb. tub
10 tubs per ton

All Season Mineral Tub *High Phos Mineral Tub*

\$103.50 \$106.00



Hot Knife

\$115

Allows for easy removal of twine buildup on bale feeders!



Calf Sled

\$229

www.cammackranchsupply.com 800-828-2829



CIRCLE D *feeds*

- ✓ Loomix liquid feed
- ✓ Salt
- ✓ Lick tubs
- ✓ Mooremans Mineral
- ✓ Custom blends & rations
- ✓ Feed sample testing
- ✓ Hay treat
- ✓ Manure spreading



**Call now for spring
and fall bookings**

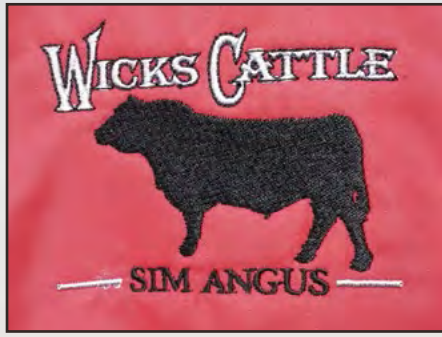
Kyle Detienne 701-770-5214



Thank you!

THANK YOU TO OUR FRIENDS, FAMILY,
NEIGHBORS AND CUSTOMERS FOR ATTENDING
THE SALE AND FOR YOUR SUPPORT
THROUGHOUT THE YEARS. WE APPRECIATE
YOUR SUPPORT, BUSINESS AND FRIENDSHIP.





Zane & Mary Jo Wicks
4022 Hwy 8S
Richardton, ND 58652
www.wickscattle.com

Dated material: Please deliver immediately!

FIRST-CLASS MAIL
U.S. POSTAGE PAID
LivestockDirect
PERMIT NO. 29

